

NM OIL CONS. COMMISSION
DRAWING NO.
ARTEZIA, NM 88210
UNITED STATES
DEPARTMENT OF THE INTERIOR
BUREAU OF LAND MANAGEMENT

SUBMIT IN 1. LIGATE*
(Other instructions on
reverse side)

30-015-28071
Form approved.
Budget Bureau No. 1004-0136
Expires August 31, 1985

APPLICATION FOR PERMIT TO DRILL, DEEPEN, OR PLUG BACK

1a. TYPE OF WORK

DRILL ☒

DEEPEN ☐

PLUG BACK ☐

b. TYPE OF WELL

OIL
WELL ☒

GAS
WELL ☐

OTHER

SINGLE
ZONE ☒

RECEIVED
ZONE ☐

2. NAME OF OPERATOR

Marathon Oil Company

3. ADDRESS OF OPERATOR

P O Box 552, Midland, TX 79702 915/682-1626

4. LOCATION OF WELL (Report location clearly and in accordance with any State requirements.)

At surface

1980' FSL & 660' FWL

UNORTHODOX

LOCATION:

At proposed prod. zone

1980' FSL & 660' FWL

14. DISTANCE IN MILES AND DIRECTION FROM NEAREST TOWN OR POST OFFICE*

8.5 mi. W. of Lakewood, NM

15. DISTANCE FROM PROPOSED*

LOCATION TO NEAREST
PROPERTY OR LEASE LINE, FT.
(Also to nearest drlg. unit line, if any)

660'

16. NO. OF ACRES IN LEASE

640

17. NO. OF ACRES ASSIGNED

TO THIS WELL
320, S/2

18. DISTANCE FROM PROPOSED LOCATION*

TO NEAREST WELL, DRILLING, COMPLETED,
OR APPLIED FOR, ON THIS LEASE, FT.

*

19. PROPOSED DEPTH

8000'

20. ROTARY OR CABLE TOOLS

rotary

21. ELEVATIONS (Show whether DF, RT, GR, etc.)

3733'

22. APPROX. DATE WORK WILL START*

August 10, 1994

23.

PROPOSED CASING AND CEMENTING PROGRAM

SIZE OF HOLE	SIZE OF CASING	WEIGHT PER FOOT	SETTING DEPTH	QUANTITY OF CEMENT
17-1/2"	13-3/8"	48#	40'	Conductor - redimix to surf
12-1/4"	9-5/8"	36#	1200'	800 - circulate
8-3/4"	7"	23#, 26#	8000'	1075 - TOC @ ± 1000'

See attached multipoint & drlg program for specific details.

* 2540' to the proposed MOC Federal #3 at 660' FNL & 660' FWL.

Post ID-1
9-2-94

New Loc & API

Approved Subject to
Comments and
Recommendations

IN ABOVE SPACE DESCRIBE PROPOSED PROGRAM: If proposal is to deepen or plug back, give data on present productive zone and proposed new productive zone. If proposal is to drill or deepen directionally, give pertinent data on subsurface locations and measured and true vertical depths. Give blowout preventer program, if any.

24.

SIGNED

W. J. [Signature] for T. B. [Signature]

TITLE

Drlg. Supt.

DATE

7-07-94

(This space for Federal or State office use)

PERMIT NO.

APPROVAL DATE

FORIG. SODA RICHARD L. MANUS

AREA MANAGER

APPROVED BY

TITLE

DATE

AUG 23 1994

CONDITIONS OF APPROVAL, IF ANY:

*See Instructions On Reverse Side

DISTRICT I
P.O. Box 1980, Hobbs, NM 88240

DISTRICT II
P.O. Drawer DD, Artesia, NM 88210

DISTRICT III
1000 Rio Brazos Rd., Aztec, NM 87410

State of New Mexico
Energy, Minerals and Natural Resources Department

Form C-102
Revised February 10, 1994
Instruction on back
Submit to Appropriate District Office
State Lease - 4 Copies
Fee Lease - 3 Copies

OIL CONSERVATION DIVISION

P.O. Box 2088
Santa Fe, New Mexico 87504-2088

☐ AMENDED REPORT

WELL LOCATION AND ACREAGE DEDICATION PLAT

API Number 30-015-28071	Pool Code 15475	Pool Name 0066R DRAW Undesignated/Upper Penn, SOUTH
Property Code	Property Name MOC FEDERAL	Well Number 4
OGRID No.	Operator Name MARATHON OIL COMPANY	Elevation 3733'

Surface Location

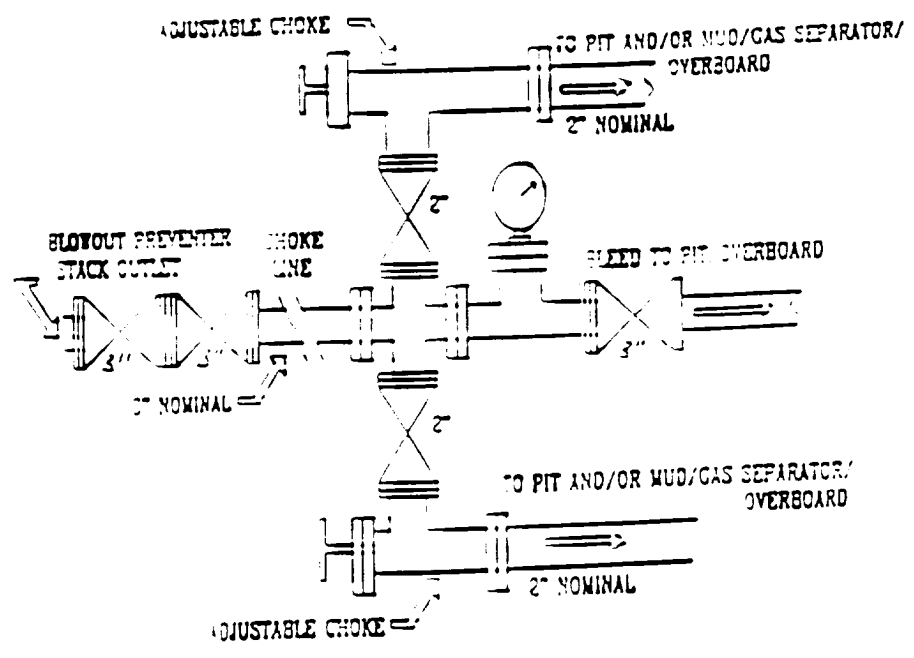
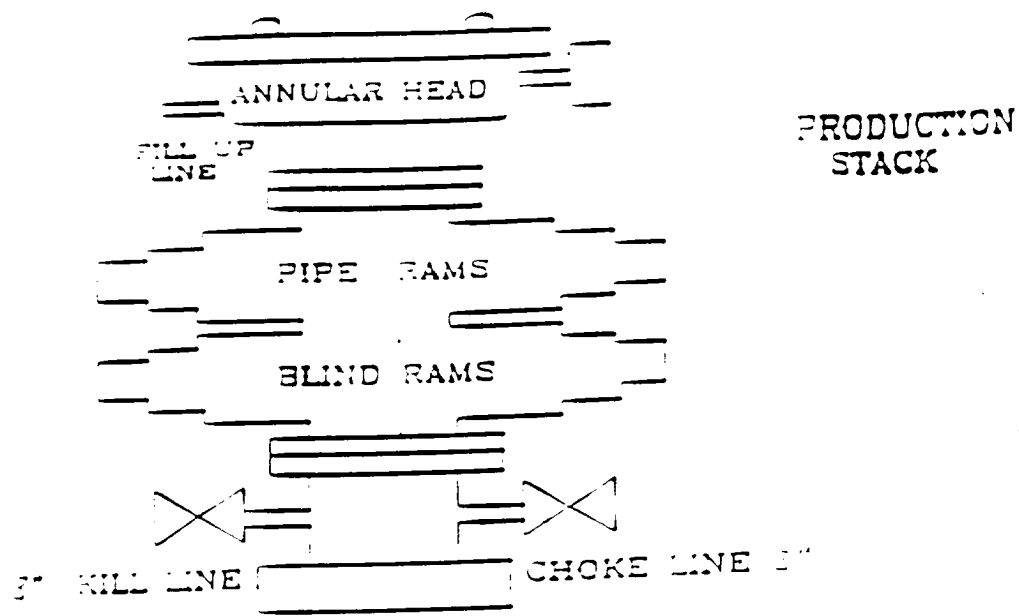
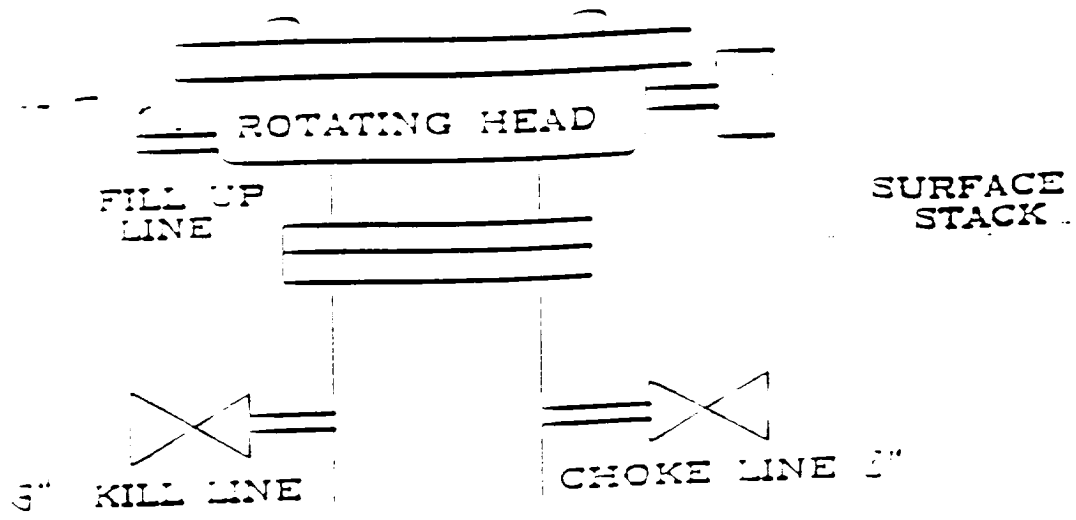
UL or lot No.	Section	Township	Range	Lot Idn	Feet from the	North/South line	Feet from the	East/West line	County
L	1	21 S	23 E		1980	SOUTH	660	WEST	EDDY

Bottom Hole Location If Different From Surface

UL or lot No.	Section	Township	Range	Lot Idn	Feet from the	North/South line	Feet from the	East/West line	County
Dedicated Acres 320	Joint or Infill	Consolidation Code	Order No.						

NO ALLOWABLE WILL BE ASSIGNED TO THIS COMPLETION UNTIL ALL INTERESTS HAVE BEEN CONSOLIDATED
OR A NON-STANDARD UNIT HAS BEEN APPROVED BY THE DIVISION

<p>LOT 4 - 40.04 AC LOT 3 - 40.03 AC LOT 2 - 40.01 AC LOT 1 - 39.93 AC</p> <p>80.00 AC</p> <p>LOT 5 - 39.76 AC</p> <p>LOT 6 - 39.79 AC</p> <p>LOT 7 - 39.92 AC</p>	<p>OPERATOR CERTIFICATION</p> <p>I hereby certify the the information contained herein is true and complete to the best of my knowledge and belief.</p> <p><u>W. J. Duman, FOR T. B. Arnold</u> Signature</p> <p><u>T. B. Arnold</u> Printed Name</p> <p><u>Drlg. Supt.</u> Title</p> <p><u>7-07-94</u> Date</p> <p>SURVEYOR CERTIFICATION</p> <p>I hereby certify that the well location shown on this plat was plotted from field notes of actual surveys made by me or under my supervision, and that the same is true and correct to the best of my belief.</p> <p><u>April 28, 1994</u> Date Surveyed</p> <p><u>W.D. Num. 94-11-0764</u> Signature & Seal of Professional Surveyor</p> <p><u>W.D. Num. 94-11-0764</u> Certificate No.</p> <p>JOHN W. WEST, 676 RONALD J. EIDSON, 3239</p>
--	--



3 M BOPE