

District I
PO Box 1980, Hobbs, NM 88241-1980
District II
PO Drawer DD, Artesia, NM 88211-0719
District III
1000 Rio Brazos Rd., Aztec, NM 87410
District IV
PO Box 2088, Santa Fe, NM 87504-2088

State of New Mexico
Energy, Minerals & Natural Resources Department

OIL CONSERVATION DIVISION
PO Box 2088
Santa Fe, NM 87504-2088

Form C-101
Revised February 10, 1994
Instructions on back
Submit to Appropriate District Office
State Lease - 6 Copies
Fee Lease - 5 Copies

☐ AMENDED REPORT

APPLICATION FOR PERMIT TO DRILL, RE-ENTER, DEEPEN, PLUGBACK, OR ADD A ZONE

Operator Name and Address. Primero Operating, Inc. P. O. Box 1433 Roswell, NM 88202-1433		OGRID Number 018100
Property Code 16134	Property Name Fanning Draw State	API Number 30-015-28197
		Well No. 1

7 Surface Location

UL or lot no.	Section	Township	Range	Lot Ida	Feet from the	North/South line	Feet from the	East/West line	County
0	32	21-S	22-E		990	South	1980	East	Eddy

8 Proposed Bottom Hole Location If Different From Surface

UL or lot no.	Section	Township	Range	Lot Ida	Feet from the	North/South line	Feet from the	East/West line	County
Proposed Pool 1 Wildcat, Wolfcamp					Proposed Pool 2 96086				

Work Type Code N	Well Type Code G	Cable/Rotary R	Lease Type Code S	Ground Level Elevation 4490'
Multiple No	Proposed Depth 7300'	Formation Wolfcamp	Contractor Unknown	Spud Date 12/15/94

21 Proposed Casing and Cement Program

Hole Size	Casing Size	Casing weight/foot	Setting Depth	Sacks of Cement	Estimated TOC
17-1/2	13-3/8	54.5	400'	400	Circulate
12-1/4	8-5/8	24	1900'	1200	Circulate
7-7/8	5-1/2	15 1/2 & 17	7300'	800	1900

Describe the proposed program. If this application is to DEEPEN or PLUG BACK give the data on the present productive zone and proposed new productive zone. Describe the blowout prevention program, if any. Use additional sheets if necessary.

We propose to drill a 17 1/2" hole to 400' and set 13-3/8" 54.5# API csg w/ 4 centralizers, Texas pattern shoe and insert float. We will circ. cement and test csg to 900 psi. After WOC 18 hrs. we will drill a 12 1/4" hole to 1900' and set 8-5/8" 24# API csg w/ 10 centralizers, float shoe and float collar. We will circ. cement and test csg to 1000 psi. After WOC 18 hrs. we will drill a 7-7/8" hole to 7300'. If the hole looks unproductive, we will plug it following NMOC rules and regulations. If the well looks commercial, we will run 5 1/2" csg and complete as a gas well.

SEE ATTACHED O.C. DIAGRAM
SUFFICIENT
TIME TO WITNESS CEMENTING THE
13 3/8, 8 5/8" CASING

I hereby certify that the information given above is true and complete to the best of my knowledge and belief. Signature: <u>[Signature]</u>		OIL CONSERVATION DIVISION	
Printed name: Phelps White		Approved by: <u>[Signature]</u>	
Title: President		Title: <u>[Signature]</u>	
Date: 11/17/94	Phone: 505-622-1001	Approval Date: 11-21-94	Expiration Date: 5-21-95
		Conditions of Approval: Attached <input type="checkbox"/>	

OIL CONSERVATION DIVISION

DISTRICT I
P.O. Box 1980, Hobbs, NM 88240

P.O. Box 2088

Santa Fe, New Mexico 87504-2088

DISTRICT II
P.O. Drawer DD, Artesia, NM 88210

DISTRICT III
1000 Rio Brazos Rd., Aztec, NM 87410

WELL LOCATION AND ACREAGE DEDICATION PLAT

All Distances must be from the outer boundaries of the section

Operator Primero Operating			Lease Fanning Draw State		Well No. 1
Unit Letter 0	Section 32	Township 21 South	Range 22 East	County Eddy	
Actual Footage Location of Well: 990 feet from the South line and 1980 feet from the East line					
Ground level Elev. 4490	Producing Formation WOLF CAMP		Pool WILCOAT		Dedicated Acreage: Acres

1. Outline the acreage dedicated to the subject well by colored pencil or hachure marks on the plat below.

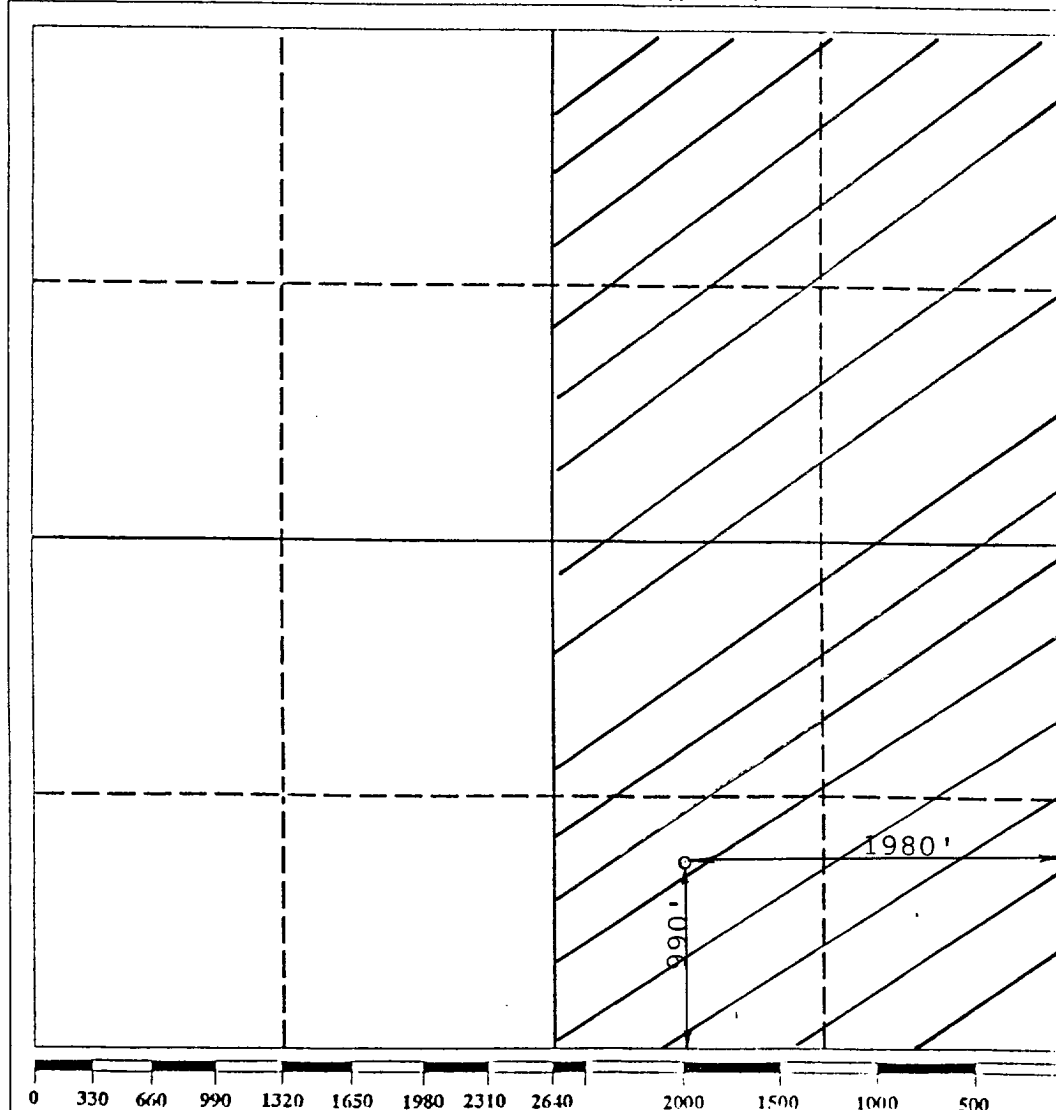
2. If more than one lease is dedicated to the well, outline each and identify the ownership thereof (both as to working interest and royalty).

3. If more than one lease of different ownership is dedicated to the well, have the interest of all owners been consolidated by communitization, unitization, force-pooling, etc.?

☐ Yes ☐ No If answer is "yes" type of consolidation _____

If answer is "no" list the owners and tract descriptions which have actually been consolidated. (Use reverse side of this form if necessary.) _____

No allowable will be assigned to the well until all interests have been consolidated (by communitization, unitization, forced-pooling, or otherwise) or until a non-standard unit, eliminating such interest, has been approved by the Division.



OPERATOR CERTIFICATION

I hereby certify that the information contained herein is true and complete to the best of my knowledge and belief.

Signature

Printed Name

PHILIPS WHITE

Position

PRESIDENT

Company

PRIMERO Operating, Inc.

Date

11/14/94

SURVEYOR CERTIFICATION

I hereby certify that the well location shown on this plat was plotted from field notes of actual surveys made by me or under my supervision, and that the same is true and correct to the best of my knowledge and belief.

Date Surveyed

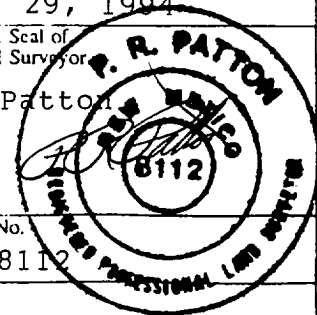
August 29, 1994

Signature & Seal of
Professional Surveyor

P.R. Patton

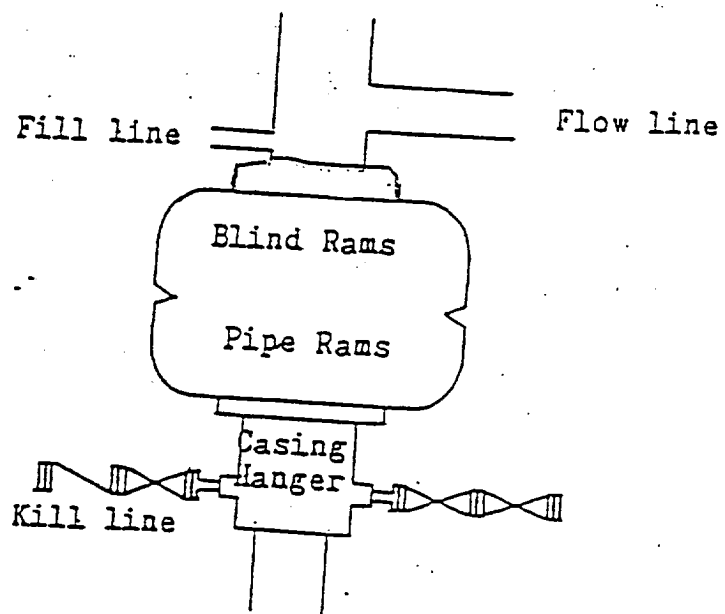
Certificate No.

8112



PRIMERO OPERATING, INC.

FANNING DRAW STATE # 1



Blowout Preventer
3000 psi working pressure