

District I
PO Box 1980, Hobbs, NM 88241-1980
District II
PO Drawer DD, Artesia, NM 88211-0719
District III
1000 Rio Brazos Rd., Aztec, NM 87410
District IV
PO Box 2088, Santa Fe, NM 87504-2088

State of New Mexico
Energy, Minerals & Natural Resources Department

OIL CONSERVATION DIVISION
PO Box 2088
Santa Fe, NM 87504-2088

Form C-101
Revised February 10, 1994
Instructions on back
Submit to Appropriate District Office
State Lease - 6 Copies
Fee Lease - 5 Copies

☐ AMENDED REPORT

APPLICATION FOR PERMIT TO DRILL, RE-ENTER, DEEPEN, PLUGBACK, OR ADD A ZONE

Operator Name and Address: Devon Energy Corporation (Nevada) 1500 Mid-America Tower 20 N. Broadway Oklahoma City, Oklahoma 73102		OGRID Number 6137
Property Code 3446		Property Name Cactus State
		Well No. 7

7 Surface Location

UL or lot no.	Section	Township	Range	Lot Ida	Feet from the	North/South line	Feet from the	East/West line	County
B	16	21 S	26 E		984	North	2485	East	Eddy

8 Proposed Bottom Hole Location If Different From Surface

UL or lot no.	Section	Township	Range	Lot Ida	Feet from the	North/South line	Feet from the	East/West line	County

Proposed Pool 1
East Catclaw Draw Delaware, EAST (1050)

Proposed Pool 2

Work Type Code	Well Type Code	Cable/Rotary	Lease Type Code	Ground Level Elevation
N	0	Rotary	S	3274'
Multiple	Proposed Depth	Formation	Contractor	Spud Date
N	3500'	Delaware	to be determined	December 24, 1994

21 Proposed Casing and Cement Program

Hole Size	Casing Size	Casing weight/foot	Setting Depth	Sacks of Cement	Estimated TOC
17 1/2"	13 3/8"	48 ppf	350'	400 sx	surface
12 1/4"	8 5/8"	24 ppf	2200'	950 sx	surface
7 7/8"	5 1/2"	15.5 ppf	3500'	375 sx	surface

Describe the proposed program. If this application is to DEEPEN or PLUG BACK give the data on the present productive zone and proposed new productive zone. Describe the blowout prevention program, if any. Use additional sheets if necessary.

We plan to drill this well to a total depth of 3500' and complete it as a Delaware development well. If the well is deemed non-commercial, then it will be plugged and abandoned in accordance with the rules established by the OCD of New Mexico. BOP's will be installed while drilling the intermediate and production holes.

Notify N.M.O.C.C. in sufficient time to witness cementing the 13 3/8" casing

I hereby certify that the information given above is true and complete to the best of my knowledge and belief.

Signature:

Charles W. Horsman

Printed name:

Charles W. Horsman

Title:

District Engineer

Date:

11/21/94

Phone:

(405) 552-4508

OIL CONSERVATION DIVISION

Approved by:

SUPERVISOR, DISTRICT II

Title:

Approval Date:

FEB 1 1995

Expiration Date:

8-1-95

Conditions of Approval:

Attached ☐

NSL-3457-95

DISTRICT I
P. O. Box 1980
Hobbs, NM 88241-1980

DISTRICT II
P. O. Drawer DD
Artesia, NM 88211-0719

DISTRICT III
1000 Rio Brazos Rd.
Aztec, NM 87410

DISTRICT IV
P. O. Box 2088
Santa Fe, NM 87507-2088

State of New Mexico
Energy, Minerals, and Natural Resources Department

Form C-102
Revised 02-10-94

Instructions on back

Submit to the Appropriate
District Office
State Lease - 4 copies
Fee Lease - 3 copies

OIL CONSERVATION DIVISION

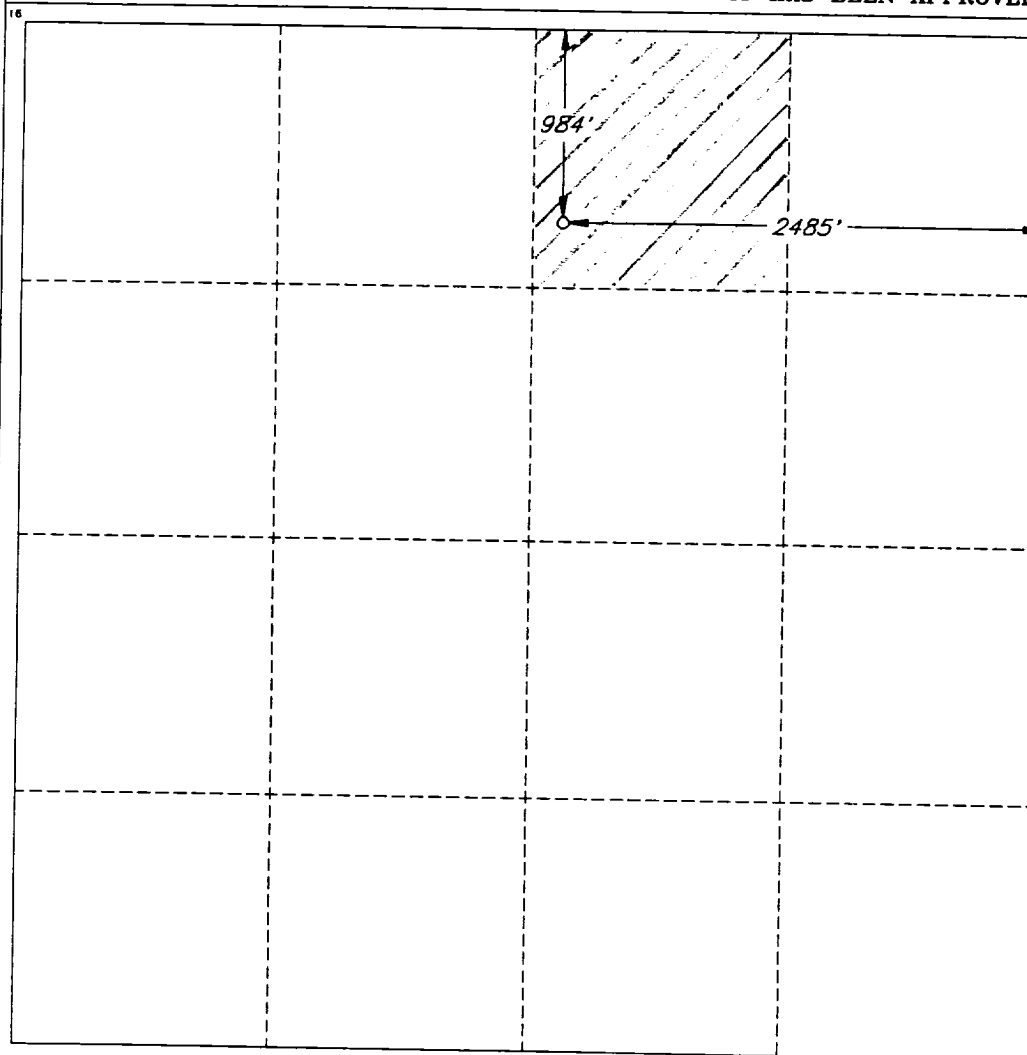
P. O. Box 2088
Santa Fe, New Mexico 87504-2088

☐ AMENDED REPORT

WELL LOCATION AND ACREAGE DEDICATION PLAT

1 API Number		2 Pool Code 10500		3 Pool Name East Catclaw Draw Delaware					
4 Property Code B		5 Property Name CACTUS STATE						6 Well Number 7	
7 OGRID No. 6137		8 Operator Name DEVON ENERGY OPERATING COMPANY						9 Elevation 3274'	
10 SURFACE LOCATION									
UL or lot no. B	Section 16	Township 21 SOUTH	Range 26 EAST, N.M.P.M.	Lot Ida	Feet from the 984'	North/South line NORTH	Feet from the 2485'	East/West line EAST	County EDDY
11 BOTTOM HOLE LOCATION IF DIFFERENT FROM SURFACE									
UL or lot no.	Section	Township	Range	Lot Ida	Feet from the	North/South line	Feet from the	East/West line	County
12 Dedicated Acres 40		13 Joint or Infill		14 Consolidation Code		15 Order No.			

NO ALLOWABLE WELL BE ASSIGNED TO THIS COMPLETION UNTIL ALL INTERESTS HAVE BEEN
CONSOLIDATED OR A NON-STANDARD UNIT HAS BEEN APPROVED BY THE DIVISION



OPERATOR CERTIFICATION

I hereby certify that the information
contained herein is true and complete
to the best of my knowledge and belief.

Signature
Charles W. Horsman
Printed Name
Charles W. Horsman
Title
District Engineer
Date
11/23/94

SURVEYOR CERTIFICATION

I hereby certify that the well
location shown on this plat was
plotted from field notes of actual
surveys made by me or under
my supervision, and that the
same is true and correct to the
best of my belief.

Date of Survey
NOVEMBER 16, 1994

Signature and Seal of
Professional Surveyor

Certificate No.
V. L. BEZNER LAND SURV. #7920
JOB #36563 2 50 NE / V.H.B.