

OIL CONSERVATION DIV.
811 S. 1st ST. UNITED STATES
DEPARTMENT OF THE INTERIOR
BUREAU OF LAND MANAGEMENT

SUBMIT IN "PLICATE"
(Other instructions on
reverse side)

Form approved.
Budget Bureau No. 1004-0136
Expires: December 31, 1991

APPLICATION FOR PERMIT TO DRILL OR DEEPEN

1a. TYPE OF WORK

DRILL ☒

DEEPEN ☐

b. TYPE OF WELL

OIL WELL ☒

GAS WELL ☐

OTHER ☐

SINGLE ZONE ☐

MULTIPLE ZONE ☐

2. NAME OF OPERATOR

Read & Stevens, Inc.

18917

505/622-3770

3. ADDRESS AND TELEPHONE NO.

P. O. Box 1518

Roswell, NM 88202

4. LOCATION OF WELL (Report location clearly and in accordance with any State requirements.)*

At surface

1980' FSL & 1650' FEL

At proposed prod. zone

Same

Unit J

14. DISTANCE IN MILES AND DIRECTION FROM NEAREST TOWN OR POST OFFICE*

9 miles east of Carlsbad, NM

10. DISTANCE FROM PROPOSED*

LOCATION TO NEAREST
PROPERTY OR LEASE LINE, FT.
(Also to nearest drig. unit line, if any)

1650'

16. NO. OF ACRES IN LEASE

2,360

17. NO. OF ACRES ASSIGNED
TO THIS WELL

40

18. DISTANCE FROM PROPOSED LOCATION*

TO NEAREST WELL, DRILLING, COMPLETED,
OR APPLIED FOR, ON THIS LEASE, FT.

990'

19. PROPOSED DEPTH

6,100'

20. ROTARY OR CABLE TOOLS

Rotary

21. ELEVATIONS (Show whether DF, RT, GR, etc.)

GR: 3187'

22. APPROX. DATE WORK WILL START*

April 20, 1996

23. PROPOSED CASING AND CEMENTING PROGRAM

SIZE OF HOLE	GRADE, SIZE OF CASING	WEIGHT PER FOOT	SETTING DEPTH	QUANTITY OF CEMENT
17 1/2"	13 3/8" J-55	54.5#	400'	Circ. 425 sx "C" to surf.
11"	8 5/8" J-55	24.0#	2200'	See Below
11"	8 5/8" J-55	32.0#	2500'	Tieback 300 sx lite + 200
7 7/8"	5 1/2" J-55	15.5#	6100'	Tieback w/600 sx "H"

Mud Program:

0' - 400': Fresh water w/Gel spud mud:
400' - 2500': Brine mud:
2500' - 6100': Cut brine mud:

Mud Wt.
8.7-8.9 ppg
9.5-10.2 ppg
8.7-9.5 ppg

Vis.
34-36
28-30
32-34

W/L Control
No W/L control
No W/L control
W/L cont. 10cc

BOP Program:

A 10" 3000 psi wp Shaffer Type "E" double hydraulic ram BOP will be installed on the 8 5/8" casing. Casing and BOP will be tested before drilling out with 7 7/8" BOP will be used as a 2000 psi system and will be tested daily.

APR 15 1996

OIL CON. DIV.
DIST. 2

Post #D-1
4-19-96
Newhock & API

IN ABOVE SPACE DESCRIBE PROPOSED PROGRAM: If proposal is to deepen, give data on present productive zone and proposed new productive zone. If proposal is to drill or deepen directionally, give pertinent data on subsurface locations and measured and true vertical depths. Give blowout preventer program, if any.

24. Agent for: Feb. 21, 1996
SIGNED: [Signature] TITLE: Read & Stevens, Inc. DATE: [Signature]

(This space for Federal or State office use)

PERMIT NO. APPROVAL DATE

Application approval does not warrant or certify that the applicant holds legal or equitable title to those rights in the subject lease which would entitle the applicant to operations thereon.
CONDITIONS OF APPROVAL, IF ANY:

APPROVAL SUBJECT TO
GENERAL REQUIREMENTS AND
SPECIAL STIPULATIONS
ATTACHED

APPROVED (ORIG. SGD.) RICHARD L. MANUS TITLE: AREA MANAGER DATE: APR - 8 1996

*See Instructions On Reverse Side

Title 18 U.S.C. Section 1001, makes it a crime for any person knowingly and willfully to make to any department or agency of the United States any false, fictitious or fraudulent statements or representations as to any matter within its jurisdiction.

District I
PO Box 1988, Hobbs, NM 88241-1988
District II
PO Drawer DD, Artesia, NM 88211-0719
District III
1000 Rio Brazos Rd., Amar, NM 87410
District IV
PO Box 2088, Santa Fe, NM 87504-2088

State of New Mexico
Energy, Minerals & Natural Resources Department

OIL CONSERVATION DIVISION
PO Box 2088
Santa Fe, NM 87504-2088

Form C-102
Revised February 10, 1994
Instructions on back
Submit to Appropriate District Office
State Lease - 4 Copies
Fee Lease - 3 Copies

☐ AMENDED REPORT

WELL LOCATION AND ACREAGE DEDICATION PLAT

API Number 30-015-28935		Pool Code 24320		Unders Fenton, Delaware		Foot Name	
Property Code		Property Name NIX FEDERAL				Well Number 8	
OGRID No.		Operator Name READ & STEVENS, INC				Elevation 3187	

10 Surface Location

UL or lot no.	Section	Township	Range	Lot Idn	Feet from the	North/South line	Feet from the	East/West line	County
J	28	21-S	28-E		1980	SOUTH	1650	EAST	ADJOY

11 Bottom Hole Location If Different From Surface

UL or lot no.	Section	Township	Range	Lot Idn	Feet from the	North/South line	Feet from the	East/West line	County

12 Dedicated Acres 40	13 Joint or Infill	14 Consolidation Code	15 Order No.
--------------------------	--------------------	-----------------------	--------------

NO ALLOWABLE WILL BE ASSIGNED TO THIS COMPLETION UNTIL ALL INTERESTS HAVE BEEN CONSOLIDATED
OR A NON-STANDARD UNIT HAS BEEN APPROVED BY THE DIVISION

16		NM-0486 Bass, Inc., et al	17 OPERATOR CERTIFICATION I hereby certify that the information contained herein is true and complete to the best of my knowledge and belief. Signature George R. Smith, agent for: Read & Stevens, Inc. Title February 22, 1996 Date
			18 SURVEYOR CERTIFICATION I hereby certify that the well location shown on this plat was plotted from field notes of actual surveys made by me or under my supervision, and that the same is true and correct to the best of my belief. FEBRUARY 18, 1996 Date of Survey Signature of Registered Professional Surveyor: NEW MEXICO 5412 REGISTERED PROFESSIONAL SURVEYOR

END



KEN REYNOLDS—PRESIDENT
ARNIE NEWKIRK—VICE-PRESIDENT

DRILLING CO., INC. — OIL WELL DRILLING CONTRACTORS

P. O. BOX 1498 ROSWELL, NEW MEXICO 88203-1498
805/623-8070 805/746-2719
ROSWELL, NM ARTESIA, NM

RIG #3

BLOWOUT PREVENTOR ARRANGEMENT

2M SYSTEM

10" SHAFFER TYPE "E", 3000 psi WP

80 GALLON, 4 STATION KOOMEY ACCUMULATOR

3000 psi WP CHOKE MANIFOLD

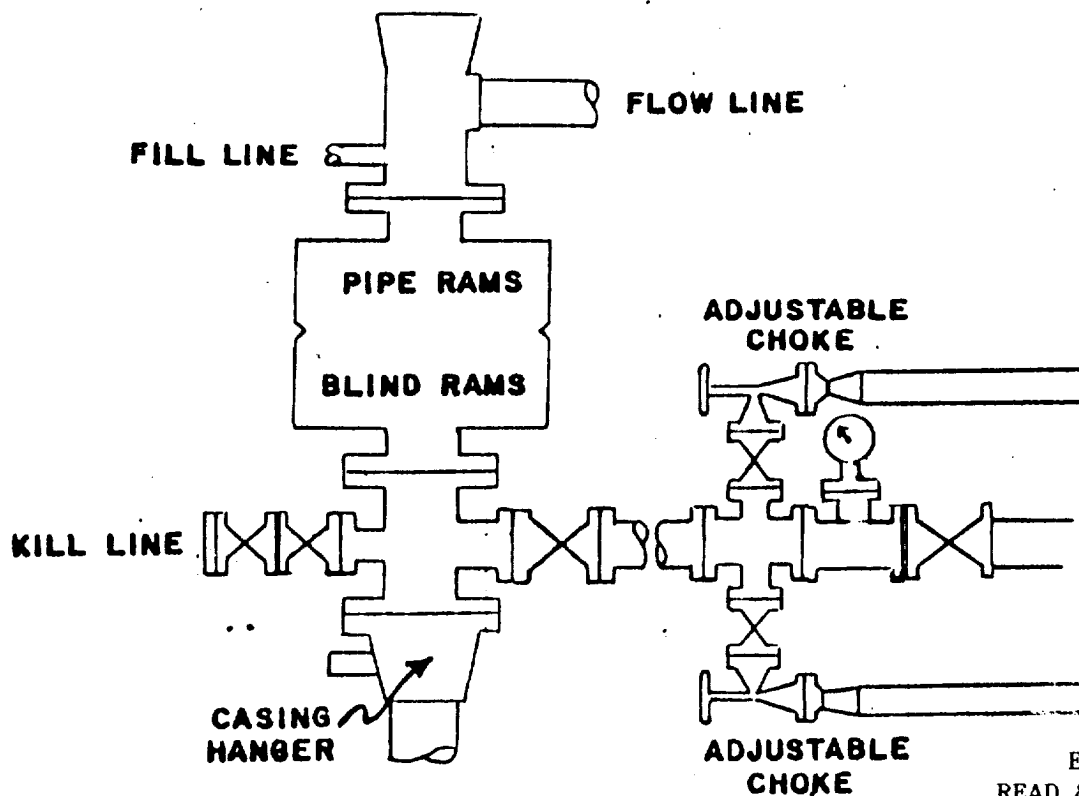


EXHIBIT "E"
READ & STEVENS, INC.
Nix Federal, Well No. 8
BOP Specifications