

**DISTRICT I**  
P. O. Box 1980  
Hobbs, NM 88241-1980

State of New Mexico  
Energy, Minerals, and Natural Resources Department

Form C-102  
Revised 02-10-94

Instructions on back

**DISTRICT II**  
P. O. Drawer DD  
Artesia, NM 88211-0719

**OIL CONSERVATION DIVISION**  
P. O. Box 2088  
Santa Fe, New Mexico 87504-2088

Submit to the Appropriate  
District Office  
State Lease - 4 copies  
Fee Lease - 3 copies

☐ AMENDED REPORT

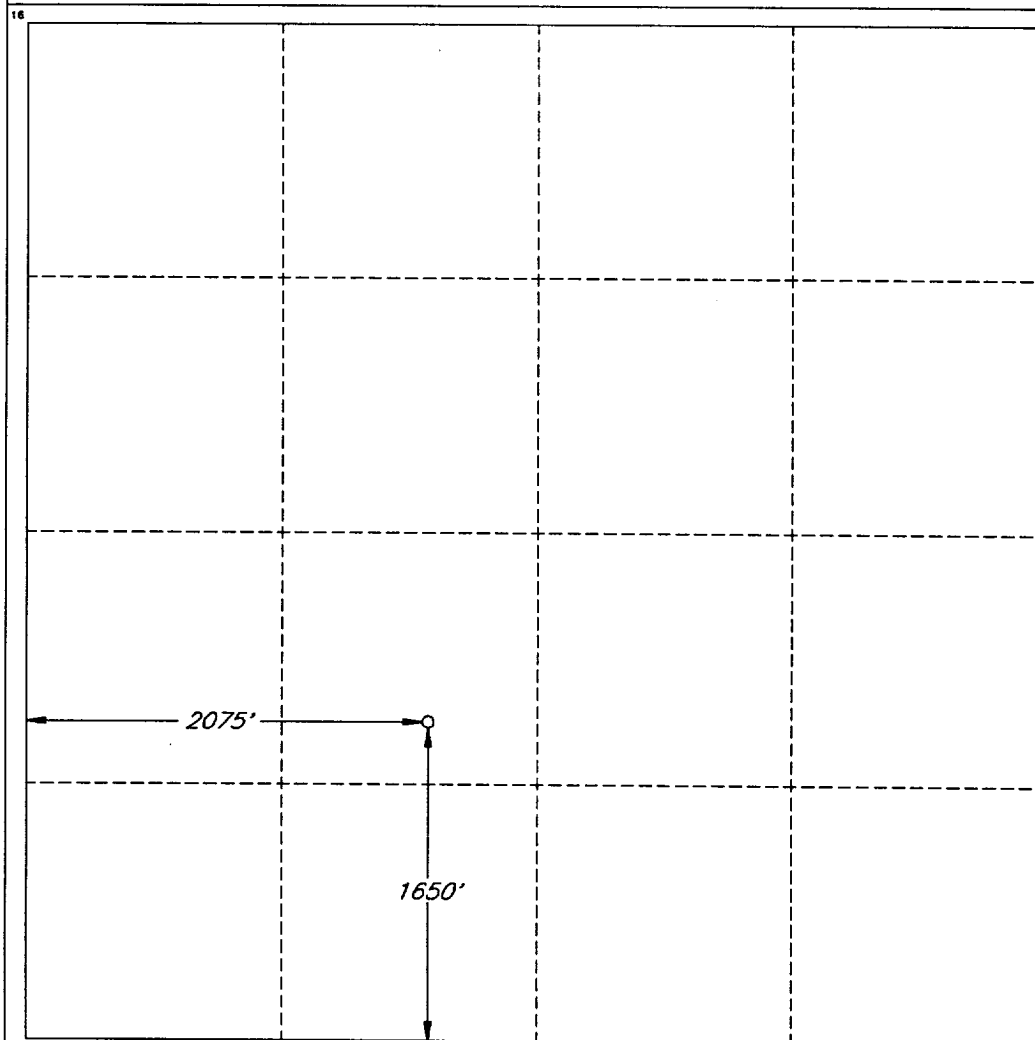
**DISTRICT III**  
1000 Rio Brazos Rd.  
Aztec, NM 87410

**DISTRICT IV**  
P. O. Box 2088  
Santa Fe, NM 87507-2088

**WELL LOCATION AND ACREAGE DEDICATION PLAT**

<sup>1</sup> API Number <b>30-015-29002</b>		<sup>2</sup> Pool Code <b>78960</b>		<sup>3</sup> Pool Name <b>Indian Basin Morrow Gas</b>					
<sup>4</sup> Property Code		<sup>5</sup> Property Name <b>MARTHA CREEK</b>						<sup>6</sup> Well Number <b>3</b>	
<sup>7</sup> OGRID No. <b>012558</b>		<sup>8</sup> Operator Name <b>KERR-MCGEE CORPORATION</b>						<sup>9</sup> Elevation <b>3746'</b>	
<sup>10</sup> SURFACE LOCATION									
UL or lot no. <b>K</b>	Section <b>30</b>	Township <b>21 SOUTH</b>	Range <b>24 EAST, N.M.P.M.</b>	Lot Ida	Feet from the <b>1650'</b>	North/South line <b>SOUTH</b>	Feet from the <b>2075'</b>	East/West line <b>WEST</b>	County <b>EDDY</b>
<sup>11</sup> BOTTOM HOLE LOCATION IF DIFFERENT FROM SURFACE									
UL or lot no.	Section	Township	Range	Lot Ida	Feet from the	North/South line	Feet from the	East/West line	County
<sup>12</sup> Dedicated Acres <b>638.08</b>		<sup>13</sup> Joint or Infill <b>Y</b>		<sup>14</sup> Consolidation Code <b>C</b>		<sup>15</sup> Order No.			

NO ALLOWABLE WELL BE ASSIGNED TO THIS COMPLETION UNTIL ALL INTERESTS HAVE BEEN  
CONSOLIDATED OR A NON-STANDARD UNIT HAS BEEN APPROVED BY THE DIVISION



**OPERATOR CERTIFICATION**

I hereby certify that the information  
contained herein is true and complete  
to the best of my knowledge and belief.

Signature *J. Bunas*

Printed Name

**Gaylan G. Bunas**

Title

**Regulatory Specialist**

Date

**5-14-96**

**SURVEYOR CERTIFICATION**

I hereby certify that the well  
location shown on this plat was  
plotted from field notes of actual  
surveys made by me or under  
my supervision, and that the  
same is true and correct to the  
best of my belief.

Date of Survey

**APRIL 06, 1996**

Signature and Seal of  
Professional Surveyor

**STATE OF NEW MEXICO**  
★ **V. LYNN BEZNER** ★  
**NO. 7920**

Certification No.  
**V. L. BEZNER AND P.E.S. #7920**

JOB #45292 / 51 NE / VHB