

DISTRICT I

P.O. Box 1980, Hobbs, NM 88241-1980

DISTRICT II

P.O. Box Drawer DD, Artesia, NM 88211-0719

DISTRICT III

1000 Rio Brazos Rd., Aztec, NM 87410

DISTRICT IV

P.O. Box 2088, Santa Fe, NM 87504-2088

State of New Mexico

Energy, Minerals and Natural Resources Dep. ment

OIL CONSERVATION DIVISION

P.O. Box 2088

Santa Fe, New Mexico 87504-2088

Form C-101

Revised February 10, 1994

Instructions on back

Submit to Appropriate District Office

State Lease - 6 Copies

Fee Lease - 5 Copies

☐ AMENDED REPORT

APPLICATION FOR PERMIT TO DRILL, RE-ENTER, DEEPEN, PLUGBACK, OR ADD A ZONE

| | | |
|--|--|---|
| ¹ Operator Name and Address TEXACO EXPLORATION & PRODUCTION INC. P.O. Box 3109, Midland Texas 79702 | | ² OGRID Number 022351 |
| ³ API Number 30-015-79284 | | ⁴ Property Code 11023 20028 |
| ⁵ Property Name NEW MEXICO 'DF' STATE COM. NCT. 2 | | ⁶ Well No. 3 |

⁷ Surface Location

| UI or lot no. | Section | Township | Range | Lot.Idn | Feet From The | North/South Line | Feet From The | East/West Line | County |
|---------------|---------|----------|-------|---------|---------------|------------------|---------------|----------------|--------|
| G | 32 | 21-S | 23-E | | 2000 | NORTH | 1650 | EAST | EDDY |

⁸ Proposed Bottom Hole Location If Different From Surface

| UI or lot no. | Section | Township | Range | Lot.Idn | Feet From The | North/South Line | Feet From The | East/West Line | County |
|---|---------|----------|-------|---------|--|------------------|---------------|----------------|--------|
| ⁹ Proposed Pool 1 79040 INDIAN BASIN UPPER PENN (P.R.C. & A.S.) | | | | | ¹⁰ Proposed Pool 2 UNDESIGNATED GLORIETA | | | | |

| | | | | |
|-----------------------------------|---------------------------------------|--|--------------------------------------|---|
| ¹¹ Work Type Code N | ¹² WellType Code G | ¹³ Rotary or C.T. ROTARY | ¹⁴ Lease Type Code S | ¹⁵ Ground Level Elevation 4059' |
| ¹⁶ Multiple No | ¹⁷ Proposed Depth 7300' | ¹⁸ Formation PENN/GLORIETA | ¹⁹ Contractor PETERSON | ²⁰ Spud Date 12/9/96 |

²¹ Proposed Casing and Cement Program

| SIZE OF HOLE | SIZE OF CASING | WEIGHT PER FOOT | SETTING DEPTH | SACKS OF CEMENT | EST. TOP |
|-----------------------|----------------|-----------------|---------------|-----------------|----------|
| 8 3/4" $\geq 12 3/4"$ | 9 5/8" | 36# | 1500' | 650 SACKS | SURFACE |
| 8 3/4" | 7" | 26# | 6900' | 900 SACKS | SURFACE |
| | | | | | |
| | | | | | |

²² Describe the proposed program. If this application is to DEEPEN or PLUG BACK give the data on the present productive zone and proposed new productive zone. Describe the blowout prevention program, if any. Use additional sheets if necessary.

CEMENTING PROGRAM:

SURFACE CASING - 400 SACKS CLASS C W/ 4% GEL (13.5 PPG, 1.74 CF/S, 9.1 GW/S) F/B 250 SACKS CLASS C W/ 2% CACL2 (14.8 PPG, 1.34 CF/S, 6.3 GW/S).

PRODUCTION CASING - 1st STG: 500 SACKS 50/50 POZ H W/ 2% GEL, 5% SALT, 1/4# FC (14.2 PPG, 1.35 CF/S, 6.3 GW/S).

DV TOOL @ 3600' - 2nd STG: 300 SACKS 35/65 POZ CLASS H W/ 6% GEL, 5% SALT, 1/4# FLOCELE (12.4 PPG, 2.14 CF/S, 11.9 GW/S). F/B 100 SACKS CLASS H (15.6 PPG, 1.18 CF/S, 5.2 GW/S).

THIS WILL BE AN OPEN-HOLE COMPLETION. DRILL A 6 1/8" HOLE FROM 6900' TO 7300'.
THERE ARE NO OTHER OPERATORS IN THIS QUARTER QUARTER SECTION.

Wally N.M.O.C.C. in sufficient
time to witness cementing
the 9 5/8" casing

| | | | |
|--|--------------------|--|--------------------------|
| ²³ I hereby certify that the rules and regulations of the Oil Conservation Division have been complied with and that the information given above is true and complete to the best of my knowledge and belief. | | OIL CONSERVATION DIVISION | |
| Signature <i>C. Wade Howard</i> | | Approved By: SUPERVISOR, DISTRICT II | |
| Printed Name C. Wade Howard | | Title: | |
| Title Eng. Assistant | | Approval Date: 12-4-96 | Expiration Date: 12-4-97 |
| Date 11/25/96 | Telephone 688-4606 | Conditions of Approval: Attached <input type="checkbox"/> | |

DISTRICT I
P. O. Box 1980, Hobbs, NM 88240

DISTRICT II
P. O. Drawer DD, Artesia, NM 88210

DISTRICT III
1000 Rio Hrazos Rd., Aztec, NM 87410

DISTRICT IV
P. O. Box 2088, Santa Fe, NM 87504-2088

State of New Mexico
Energy, Minerals and Natural Resources Department

OIL CONSERVATION DIVISION

PO Box 2088
Santa Fe, NM 87504-2088

Form C-102
Revised February 10, 1994

Instructions on back

Submit to Appropriate District Office

State Lease-4 copies
Fee Lease-3 copies

☐ AMENDED REPORT

WELL LOCATION AND ACREAGE DEDICATION PLAT

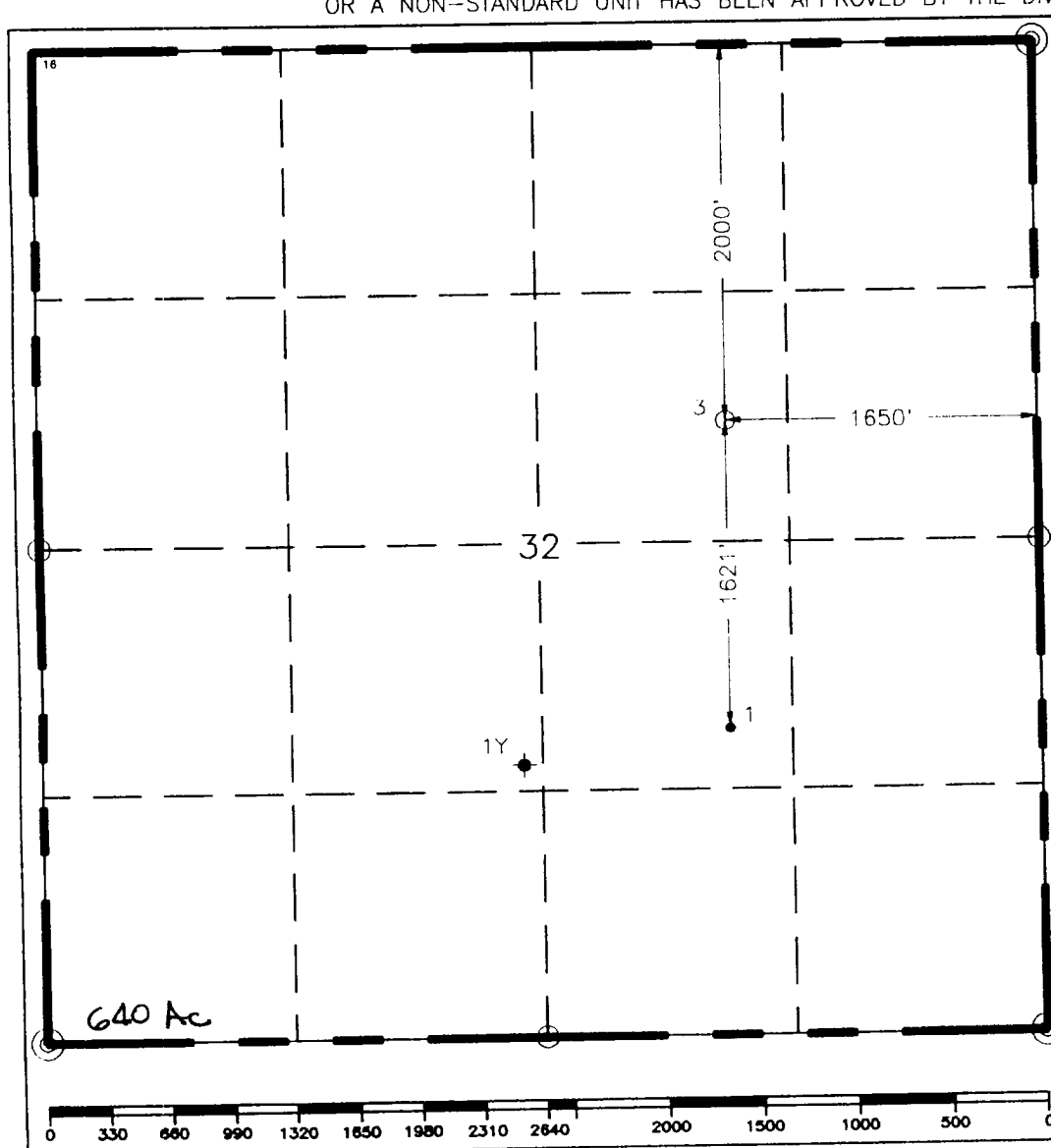
| | | | | | |
|---|--|---|--|---|--------------------------------|
| ¹ API Number 30-015-29284 | | ² Pool Code 79040 | | ³ Pool Name Indian Basin Upper Penn PRO GAS | |
| ⁴ Property Code 11032 | | ⁵ Property Name New Mexico "DF" State Com. NCT-1 | | | ⁶ Well Number 3 |
| ⁷ GRID No. 22351 | | ⁸ Operator Name TEXACO EXPLORATION & PRODUCTION, INC. | | | ⁹ Elevation 4059 |

| ¹⁰ Surface Location | | | | | | | | | |
|--------------------------------|---------|----------|-------|---------|---------------|------------------|---------------|----------------|---------------------|
| UL or lot no. | Section | Township | Range | Lot Idn | Feet from the | North/South line | Feet from the | East/West line | ⁷ County |
| G | 32 | 21-S | 23-E | | 2000 | North | 1650 | East | Eddy |

| ¹¹ Bottom Hole Location If Different From Surface | | | | | | | | | |
|--|---------|----------|-------|---------|---------------|------------------|---------------|----------------|---------------------|
| UL or lot no. | Section | Township | Range | Lot Idn | Feet from the | North/South line | Feet from the | East/West line | ⁷ County |
| | | | | | | | | | |

| | | | |
|--------------------------------------|-------------------------------|----------------------------------|-------------------------|
| ¹² Dedicated Acres 640 | ¹³ Joint or Infill | ¹⁴ Consolidation Code | ¹⁵ Order No. |
|--------------------------------------|-------------------------------|----------------------------------|-------------------------|

NO ALLOWABLE WILL BE ASSIGNED TO THIS COMPLETION UNTIL ALL INTERESTS HAVE BEEN CONSOLIDATED
OR A NON-STANDARD UNIT HAS BEEN APPROVED BY THE DIVISION.



| | |
|---|---------------------------|
| ¹⁶ OPERATOR CERTIFICATION I hereby certify that the information contained herein is true and complete to the best of my knowledge and belief. | |
| Signature | <i>C. Wade Howard</i> |
| Printed Name | C. Wade Howard |
| Position | Engineer's Assistant |
| Company | Texaco Expl. & Prod. Inc. |
| Date | November 20, 1996 |
| ¹⁷ SURVEYOR CERTIFICATION I hereby certify that the well location shown on this plat was plotted from field notes of actual surveys made by me or under my supervision, and that the same is true and correct to the best of my knowledge and belief. | |
| Date Surveyed | November 15, 1996 |
| Signature & Seal of Professional Surveyor | <i>John S. Piper</i> |
| Certificate No. | 7254 John S. Piper |
| Sheet | |

DISTRICT I
P. O. Box 1980, Hobbs, NM 88240

DISTRICT II
P. O. Drawer DD, Artesia, NM 88210

DISTRICT III
1000 Rio Brazos Rd., Aztec, NM 87410

DISTRICT IV
P. O. Box 2088, Santa Fe, NM 87504-2088

State of New Mexico
Energy, Minerals and Natural Resources Department

OIL CONSERVATION DIVISION

PO Box 2088
Santa Fe, NM 87504-2088

Form C-102
Revised February 10, 1994

Instructions on back

Submit to Appropriate District Office

State Lease-4 copies
Fee Lease-3 copies

☐ AMENDED REPORT

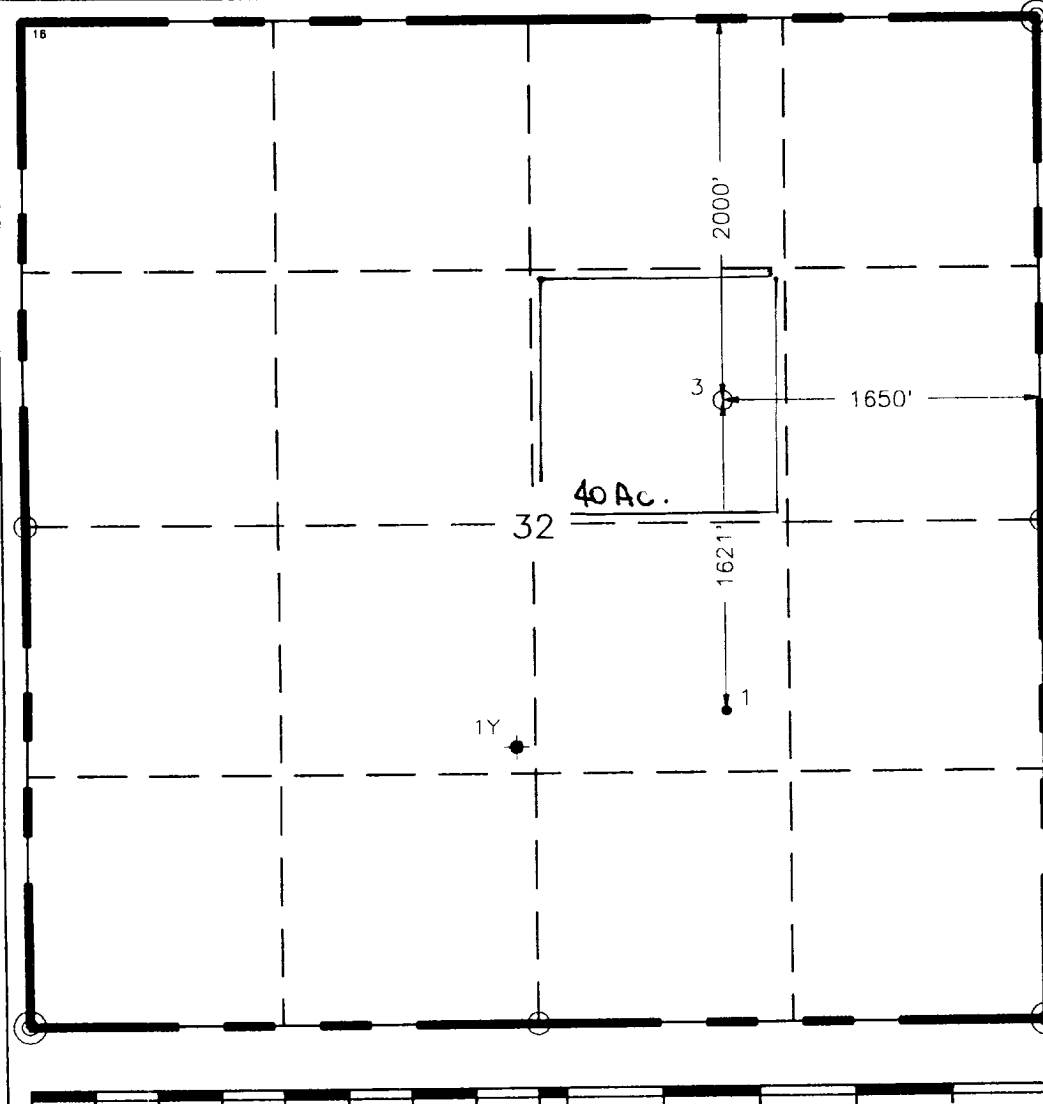
WELL LOCATION AND ACREAGE DEDICATION PLAT

| | | | | | |
|-------------------------------------|--|---|--|--|--------------------------------|
| ¹ API Number | | ² Pool Code | | ³ Pool Name Undesignated, Glorieta | |
| ⁴ Property Code 11032 | | ⁵ Property Name New Mexico "DF" State Com. NCT-1 | | | ⁶ Well Number 3 |
| ⁷ GRID No. 22351 | | ⁸ Operator Name TEXACO EXPLORATION & PRODUCTION, INC. | | | ⁹ Elevation 4059 |

| ¹⁰ Surface Location | | | | | | | | | |
|--------------------------------|---------------|------------------|---------------|---------|-----------------------|---------------------------|-----------------------|------------------------|-----------------------------|
| UL or lot no. G | Section 32 | Township 21-S | Range 23-E | Lot Idn | Feet from the 2000 | North/South line North | Feet from the 1650 | East/West line East | ⁷ County Eddy |

| ¹¹ Bottom Hole Location If Different From Surface | | | | | | | | | |
|--|---------|-------------------------------|-------|----------------------------------|---------------|-------------------------|---------------|----------------|---------------------|
| UL or lot no. | Section | Township | Range | Lot Idn | Feet from the | North/South line | Feet from the | East/West line | ⁷ County |
| ¹² Dedicated Acres 40 | | ¹³ Joint or Infill | | ¹⁴ Consolidation Code | | ¹⁵ Order No. | | | |

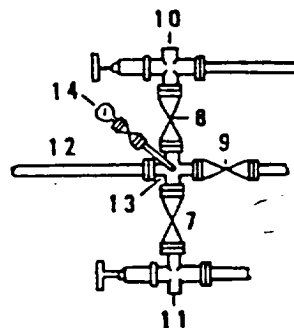
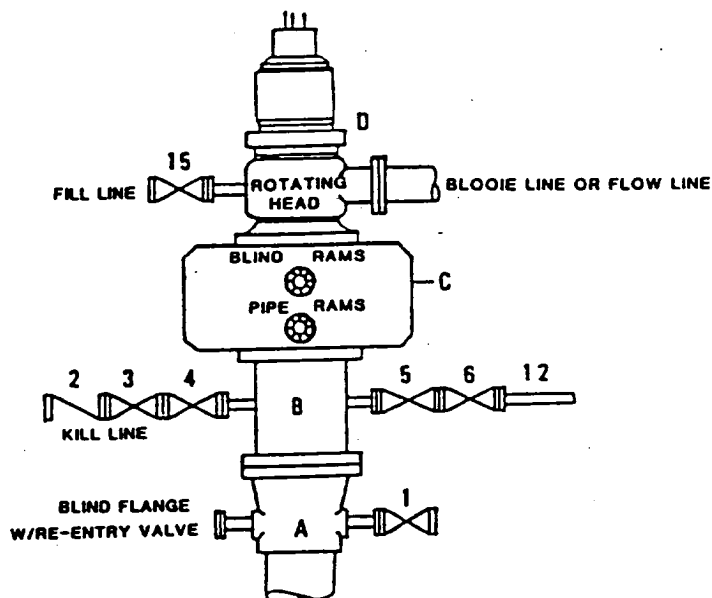
NO ALLOWABLE WILL BE ASSIGNED TO THIS COMPLETION UNTIL ALL INTERESTS HAVE BEEN CONSOLIDATED
OR A NON-STANDARD UNIT HAS BEEN APPROVED BY THE DIVISION.

| | |
|--|---|
|  | ¹⁶ OPERATOR CERTIFICATION I hereby certify that the information contained herein is true and complete to the best of my knowledge and belief. |
| | Signature <i>C. Wade Howard</i> |
| | Printed Name C. Wade Howard |
| | Position Engineer's Assistant |
| | Company Texaco Expl. & Prod. Inc. |
| | Date November 20, 1996 |
| | ¹⁷ SURVEYOR CERTIFICATION I hereby certify that the well location shown on this plat was plotted from field notes of actual surveys made by me or under my supervision, and that the same is true and correct to the best of my knowledge and belief. |
| | Date Surveyed November 15, 1996 |
| | Signature & Seal of Professional Surveyor <i>John S. Piper</i> |
| | Certificate No. 7254 John S. Piper |

Sheet

DRILLING CONTROL
CONDITION II-B 3000 WP
FOR AIR DRILLING OR
WHERE NITROGEN OR AIR BLOWS ARE EXPECTED

H₂S TRIM REQUIRED
 YES _____ NO _____



DRILLING CONTROL

MATERIAL LIST - CONDITION II - B

- | | |
|------------|---|
| A | Texaco Wellhead |
| B | 3000# W.P. drilling spool with a 2" minimum flanged outlet for kill line and 3" minimum flanged outlet for choke line. |
| C | 3000# W.P. Dual ram type preventer, hydraulic operated with 1" steel, 3000# W.P. control lines (where sub-structure height is adequate, 2 - 3000# W.P. single ram type preventers may be utilized). |
| D | Rotating Head with fill up outlet and extended Blooie Line. |
| 1,3,4,7,8, | 2" minimum 3000# W.P. flanged full opening steel gate valve, or Halliburton Lo Torc Plug valve. |
| 2 | 2" minimum 3000# W.P. back pressure valve. |
| 5,6,9 | 3" minimum 3000# W.P. flanged full opening steel gate valve, or Halliburton Lo Torc Plug valve. |
| 12 | 3" minimum schedule 80, Grade "B", seamless line pipe. |
| 13 | 2" minimum x 3" minimum 3000# W.P. flanged cross. |
| 10,11 | 2" minimum 3000# W.P. adjustable choke bodies. |
| 14 | Cameron Mud Gauge or equivalent (location optional in choke line). |
| 15 | 2" minimum 3000# W.P. flanged or threaded full opening steel gate valve, or Halliburton Lo Torc Plug valve. |



TEXACO, INC.
 MIDLAND DIVISION
 MIDLAND, TEXAS



| | | | |
|-------------|------|----------|----------|
| SCALE | DATE | EST. NO. | DRG. NO. |
| DRAWN BY | | | |
| CHECKED BY | | | |
| APPROVED BY | | | |

EXHIBIT C