

P.O. Box 1980, Hobbs, NM 88241-1980

DISTRICT II

P.O. Box Drawer DD, Artesia, NM 88211-0719

DISTRICT III

1000 Rio Brazos Rd., Aztec, NM 87410

DISTRICT IV

P.O. Box 2088, Santa Fe, NM 87504-2088

State of New Mexico

Energy, Minerals and Natural Resources Department

OIL CONSERVATION DIVISION

P.O. Box 2088

Santa Fe, New Mexico 87504-2088

Form C-10

Revised February 10, 1999

Instructions on back

Submit to Appropriate District Office

State Lease - 4 Copie

Fee Lease - 3 Copie

AMENDED REPORT

WELL LOCATION AND ACREAGE DEDICATION PLAT

1	API Number	2	Pool Code	3	Pool Name
	30-015-29284		79040		INDIAN BASIN UPPER PENN
4	Property Code	5	Property Name	6	Well No.
	11032		NEW MEXICO DF STATE COM		3
7	OGRID Number	8	Operator Name	9	Elevation
	022351		TEXACO EXPLORATION & PRODUCTION INC.		4059' GR

¹⁰ Surface Location

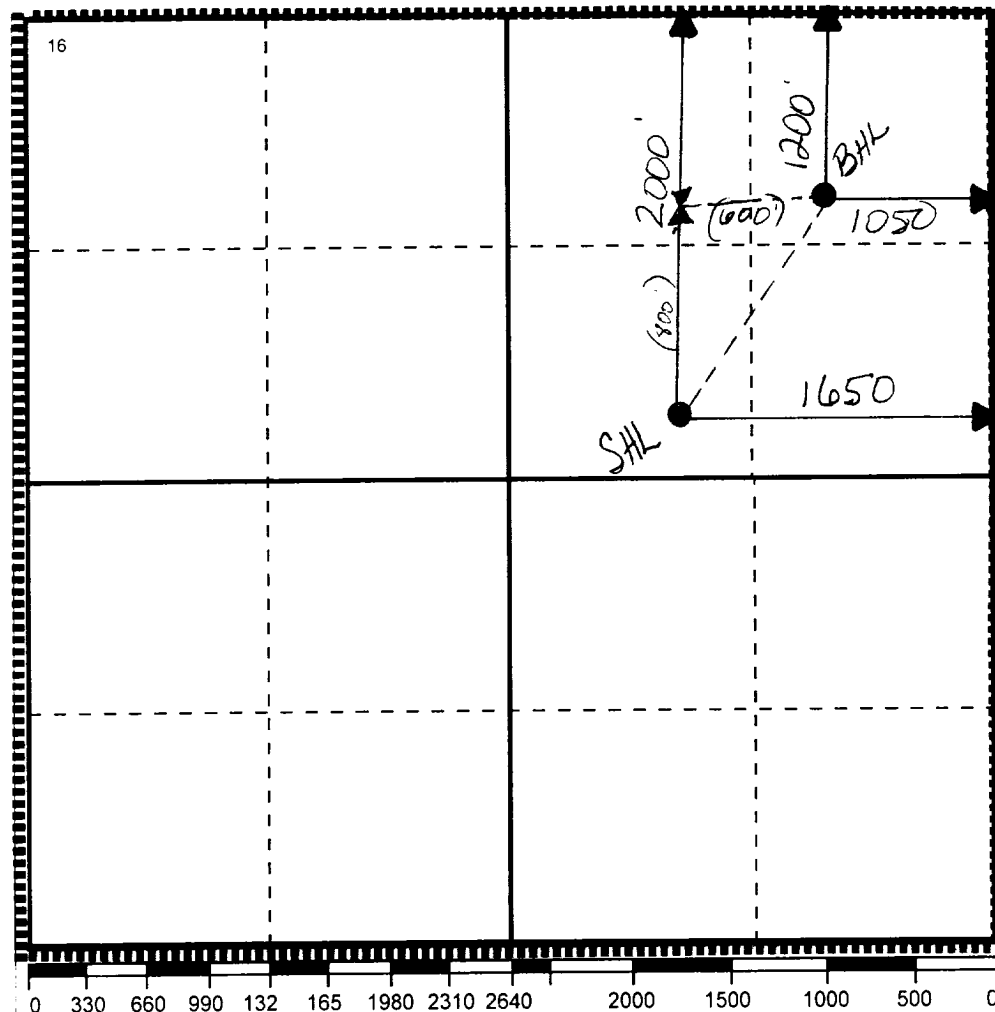
Ul or lot no	Section	Township	Range	Lot Idn	Feet From The	North/South Line	Feet From The	East/West Line	County
G	32	21-S	23-E		2000	NORTH	1650	EAST	EDDY

¹¹ Bottom Hole Location If Different From Surface

Ul or lot no	Section	Township	Range	Lot.Idn	Feet From The	North/South Line	Feet From The	East/West Line	County
A	32	21-S	23-E		1200	NORTH	1050	EAST	EDDY

¹² Dedicated Acre	¹³ Joint or Infill	¹⁴ Consolidation Code	¹⁵ Order No.
640	No		

NO ALLOWABLE WILL BE ASSIGNED TO THIS COMPLETION UNTIL ALL INTERESTS HAVE BEEN CONSOLIDATED
OR A NON-STANDARD UNIT HAS BEEN APPROVED BY THE DIVISION



17 OPERATOR CERTIFICATION

I hereby certify that the information
contained herein is true and complete to the
best of my knowledge and belief

Signature J. Denise Lake

Printed Name _____

J. Denise Leake

Positio

Engineering Assistant

Date _____

12/20/99

18 SURVEYOR CERTIFICATION

I hereby certify that the well location shown on this plat was plotted from field notes of actual surveys made by me or under my supervision, and that the same is true and correct to the best of my knowledge and belief.

Date Surveyed

Signature & Seal of
Professional Surveyor

Certificate No. _____