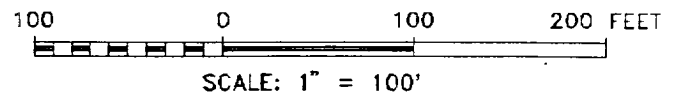
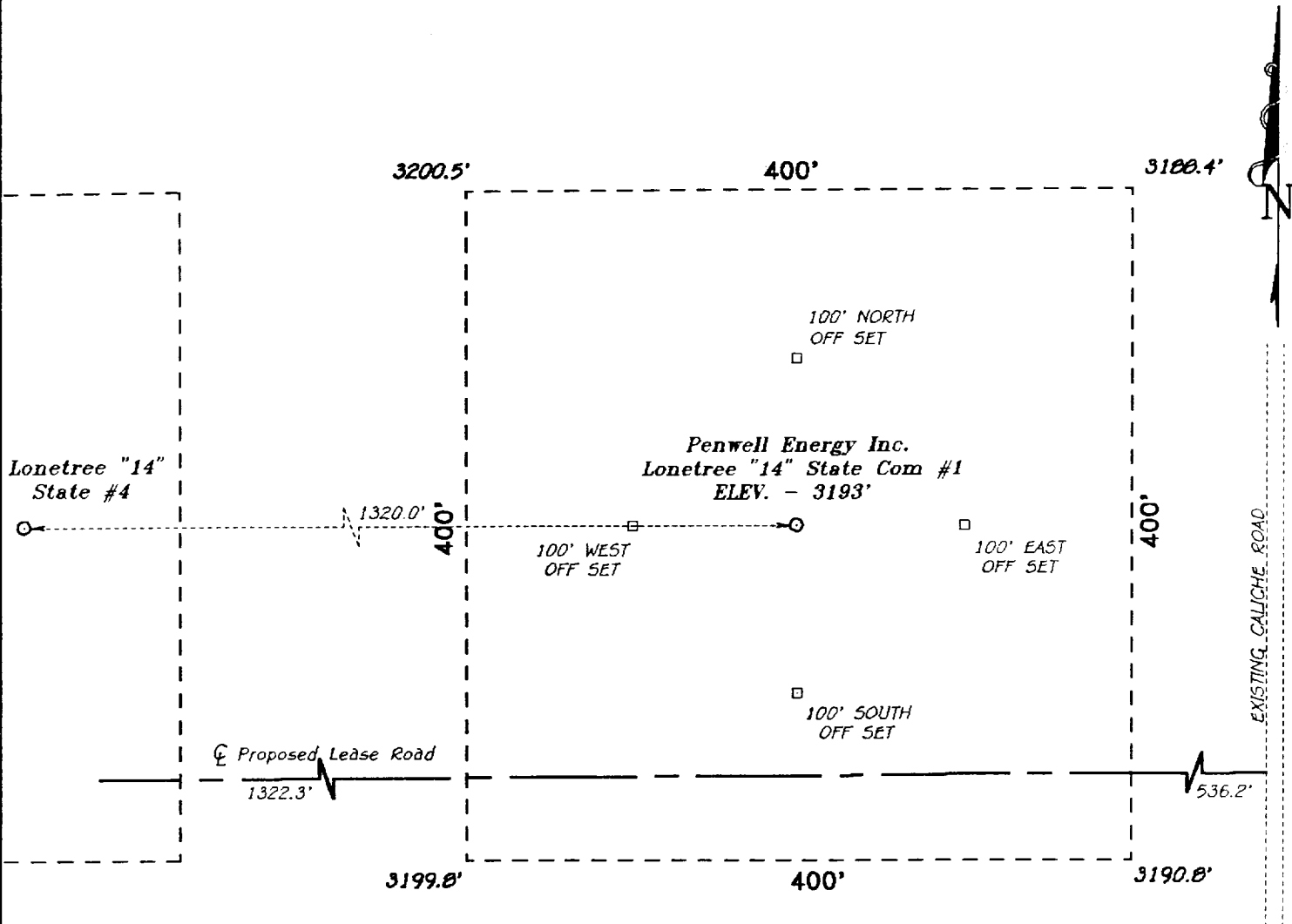


SECTION 14, TOWNSHIP 21 SOUTH, RANGE 27 EAST, N.M.P.M.,  
 EDDY COUNTY, NEW MEXICO.



DIRECTIONS

TAKE THE NORTH LOOP ROAD (COUNTY ROAD 604) EAST OF CARLSBAD, N.M. NORTH TO THE INTERSECTION OF COUNTY ROAD 206. TAKE COUNTY ROAD 206 NORTH 1 MILE TO COUNTY ROAD 600 (RAINS ROAD) TO THE AVALON GASOLINE PLANT. ASPHALT ENDS AND CALICHE ROAD BEGINS AT PLANT. STAY ON CALICHE ROAD 3 TO 4 MILES TO SECTION 14.

**BASIN SURVEYS** P.O. BOX 1786-HOBBS, NEW MEXICO

W.O. Number: 7042      Drawn By: **S.C. NICHOLS**

Date: 02-05-97      Disk: SCN #32 - 7042EE.DWG

**Penwell Energy Inc.**

REF: Lonetree "14" State Com No. 1 / Well Pad Topo

THE LONETREE "14" STATE Com No. 1 LOCATED 1980' FROM THE NORTH LINE AND 660' FROM THE EAST LINE OF SECTION 14, TOWNSHIP 21 SOUTH, RANGE 27 EAST, N.M.P.M., EDDY COUNTY, NEW MEXICO.

Survey Date: 02-04-97

Sheet 1 of 1 Sheets