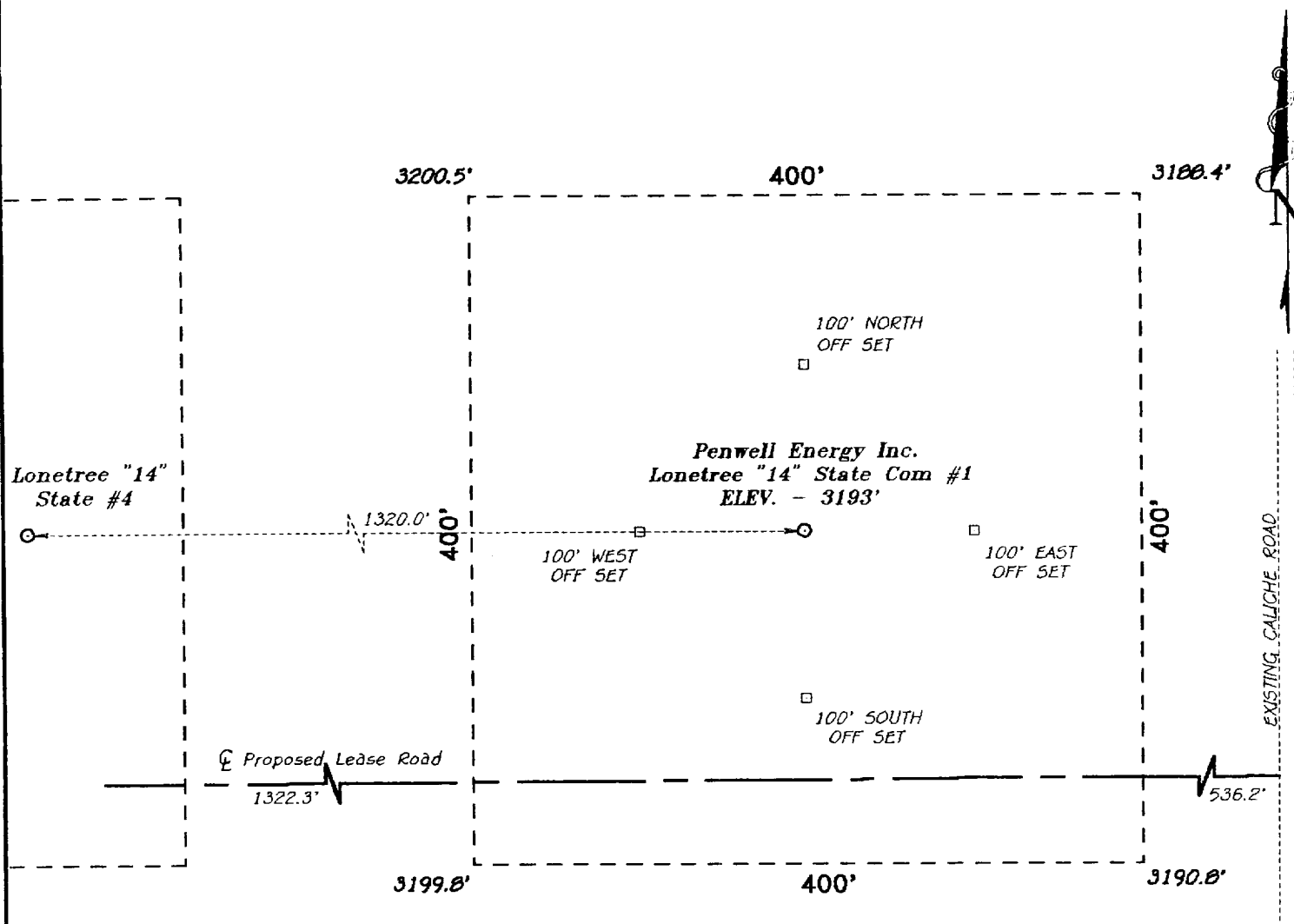


SECTION 14, TOWNSHIP 21 SOUTH, RANGE 27 EAST, N.M.P.M.,
EDDY COUNTY, NEW MEXICO.



100 0 100 200 FEET

SCALE: 1" = 100'

DIRECTIONS

TAKE THE NORTH LOOP ROAD (COUNTY ROAD 604) EAST OF CARLSBAD, N.M. NORTH TO THE INTERSECTION OF COUNTY ROAD 206. TAKE COUNTY ROAD 206 NORTH 1 MILE TO COUNTY ROAD 600 (RAINS ROAD) TO THE AVALON GASOLINE PLANT. ASPHALT ENDS AND CALICHE ROAD BEGINS AT PLANT. STAY ON CALICHE ROAD 3 TO 4 MILES TO SECTION 14.

BASIN SURVEYS P.O. BOX 1786—HOBBS, NEW MEXICO

W.O. Number: 7042

Drawn By: **S.C. NICHOLS**

Date: 02-05-97

Disk: SCN #32 - 7042EE.DWG

REF: Lonetree "14" State Com No. 1 / Well Pad Topo

THE LONETREE "14" STATE COM No. 1 LOCATED 1980' FROM
THE NORTH LINE AND 660' FROM THE EAST LINE OF
SECTION 14, TOWNSHIP 21 SOUTH, RANGE 27 EAST,
N.M.P.M., EDDY COUNTY, NEW MEXICO.

Survey Date: 02-04-97

Sheet 1 of 1 Sheets