

Artesia, NEW MEXICO
DEPARTMENT OF THE INTERIOR

GEOLOGICAL SURVEY

APPLICATION FOR PERMIT TO DRILL, DEEPEN, OR PLUG BACK

1a. TYPE OF WORK

DRILL ☒DEEPEN ☒PLUG BACK ☐

b. TYPE OF WELL

OIL
WELL ☒GAS
WELL ☐OTHER ☐SINGLE
ZONE ☒MULTIPLE
ZONE ☐

2. NAME OF OPERATOR

Ammex Petroleum, Inc.

3. ADDRESS OF OPERATOR

Box 10507 Midland, TX 79702

4. LOCATION OF WELL (Report location clearly and in accordance with any State requirements.)

At surface

2180' FNL & 1980' FWL Sec. 7, T-21-S, R-28-E SE/4 NW/4

At proposed prod. zone

same

14. DISTANCE IN MILES AND DIRECTION FROM NEAREST TOWN OR POST OFFICE*

8.5 miles NE of Calsbad, NM

10. DISTANCE FROM PROPOSED*

LOCATION TO NEAREST

PROPERTY OR LEASE LINE, FT.

(Also to nearest drlg. unit line, if any)

18. DISTANCE FROM PROPOSED LOCATION*

TO NEAREST WELL, DRILLING, COMPLETED,
OR APPLIED FOR, ON THIS LEASE, FT.

16. NO. OF ACRES IN LEASE

19. PROPOSED DEPTH

9050

17. NO. OF ACRES ASSIGNED

TO THIS WELL

40

20. ROTARY OR CABLE TOOLS

rotary

21. ELEVATIONS (Show whether DF, RT, GR, etc.)

3159.6' GR

22. APPROX. DATE WORK WILL START*

November 1983

23.

PROPOSED CASING AND CEMENTING PROGRAM

SIZE OF HOLE	SIZE OF CASING	WEIGHT PER FOOT	SETTING DEPTH	QUANTITY OF CEMENT
17 1/2"	13 3/8"	48#	400' <i>Set above top of Salt</i>	400 sx
12 1/4"	8 5/8"	24#	2450'	1000 sx
7 7/8"	5 1/2"	17#	9050'	1000 sx in 2 stages

Attached:

Supplemental drilling data
BOP sketch
Surface use and Operations Plan.

RECEIVED

NOV 17 1983

OIL & GAS

ROSWELL, NEW MEXICO

*Posted a Vol
ID-1041 Book
12-9-83*

IN ABOVE SPACE DESCRIBE PROPOSED PROGRAM: If proposal is to deepen or plug back, give data on present productive zone and proposed new productive zone. If proposal is to drill or deepen directionally, give pertinent data on subsurface locations and measured and true vertical depths. Give blowout preventer program, if any.

24.

SIGNATURE

*William C. Smith*TITLE Operations ManagerDATE 11/11/83

(This space for Federal or State office use)

PERMIT NO.

S/Richard Bastin

APPROVAL DATE

ASSOCIATE DISTRICT MANAGER

DEC 01 1983

APPROVED BY

TITLE

DATE

CONDITIONS OF APPROVAL, IF ANY:

APPROVAL SUBJECT TO
FEDERAL REQUIREMENTS AND
*See Instructions on Operations Side
ATTACHED

NEW MEXICO OIL CONSERVATION COMMISSION
WELL LOCATION AND ACREAGE DEDICATION PLAT

Form C-102
Supersedes C-128
Effective 1-1-65

All distances must be from the outer boundaries of the Section

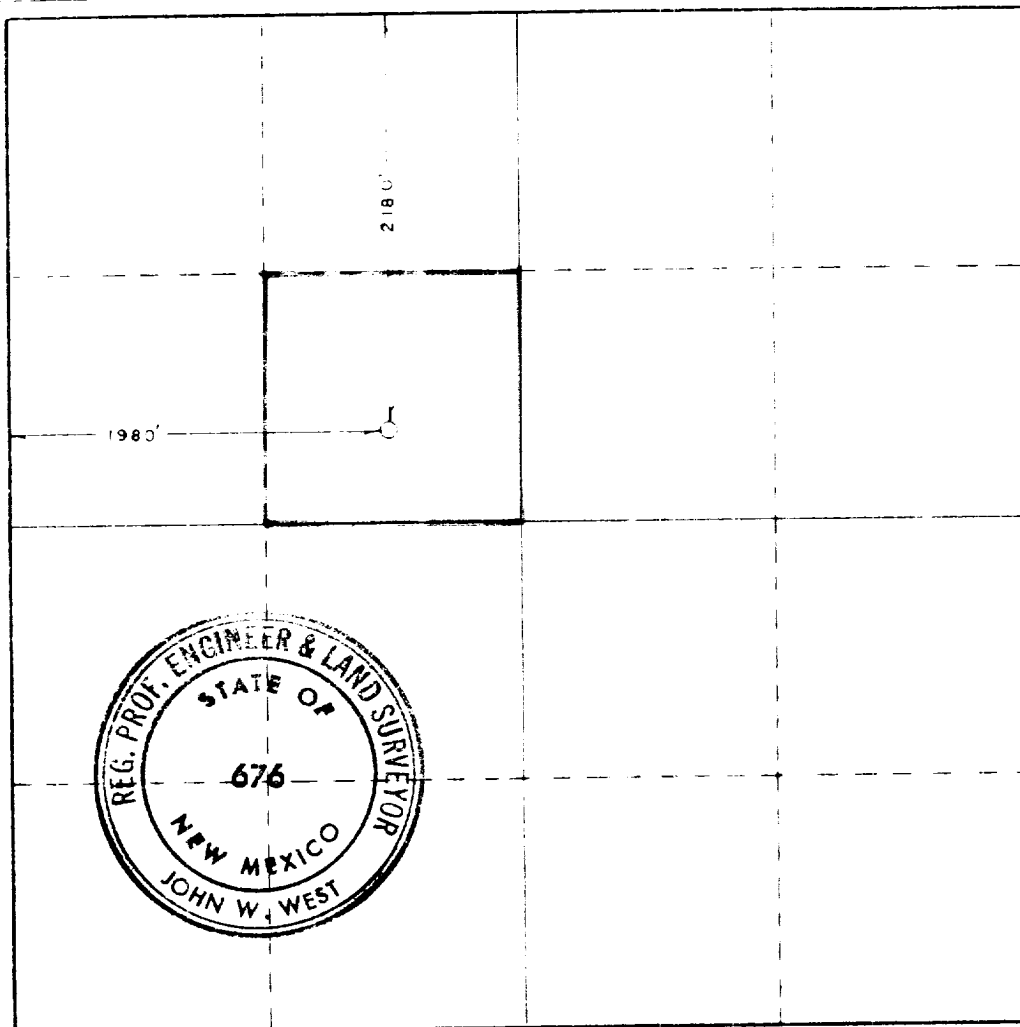
Owner AMMEX PETROLEUM INC.			Lease Big Eddy		Well No. 9298
Section F	Section 7	Township 21 SOUTH	Range 28 EAST	County EDDY	
Location of Well:					
1980 feet from the WEST		2180 feet from the NORTH		Line	
Producing Formation None		Wildcat		Estimated Acreage 40	
3159.6				Acreage	

- Outline the acreage dedicated to the subject well by colored pencil or hatchure marks on the plat below.
- If more than one lease is dedicated to the well, outline each and identify the ownership thereof (both as to working interest and royalty).
- If more than one lease of different ownership is dedicated to the well, have the interests of all owners been consolidated by communitization, unitization, force-pooling, etc?

☐ Yes ☐ No If answer is "yes," type of consolidation _____

If answer is "no," list the owners and tract descriptions which have actually been consolidated. (Use reverse side of this form if necessary.) _____

No allowable will be assigned to the well until all interests have been consolidated (by communitization, unitization, forced-pooling, or otherwise) or until a non-standard unit, eliminating such interests, has been approved by the Commission.



CERTIFICATION

I hereby certify that the information contained herein is true and complete to the best of my knowledge and belief.

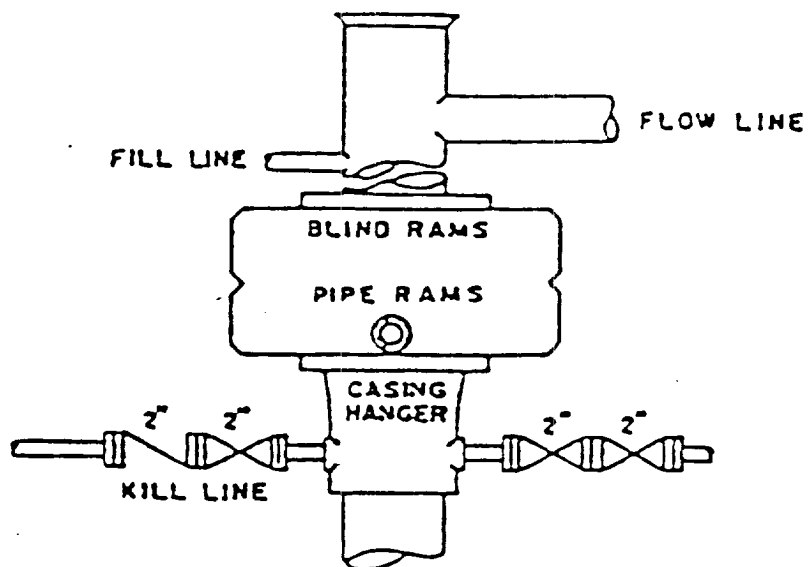
Name
W. A. Merrick
Title
Operations Manager
Company
Ammex Petroleum, Inc.
Date
11/14/83

I hereby certify that the well location shown on this plat was plotted from field notes of actual surveys made by me or under my supervision, and that the same is true and correct to the best of my knowledge and belief.

Date Surveyed
OCTOBER 7, 1983
Registered Professional Engineer in Oil and Gas
John W. West

Certificate No. **JOHN W. WEST, 676**
RONALD J. EIDSON, 3239

330 660 990 1320 1650 1980 2310 2640 2970 3300 3630 3960 4290 4620 4950 5280 5610 5940 6270 6600



BOP STACK

SERIES 600

DEPTH INTERVAL

BELOW 8-5/8" CASING SEAT

BOP ARRANGEMENT

SUPPLEMENTAL DRILLING DATA

Ammex Petroleum, Inc.
Big Edge #92
2180' FNL & 1980' FWL
Sec. 7, T21S, R28E
Eddy County, N.M.

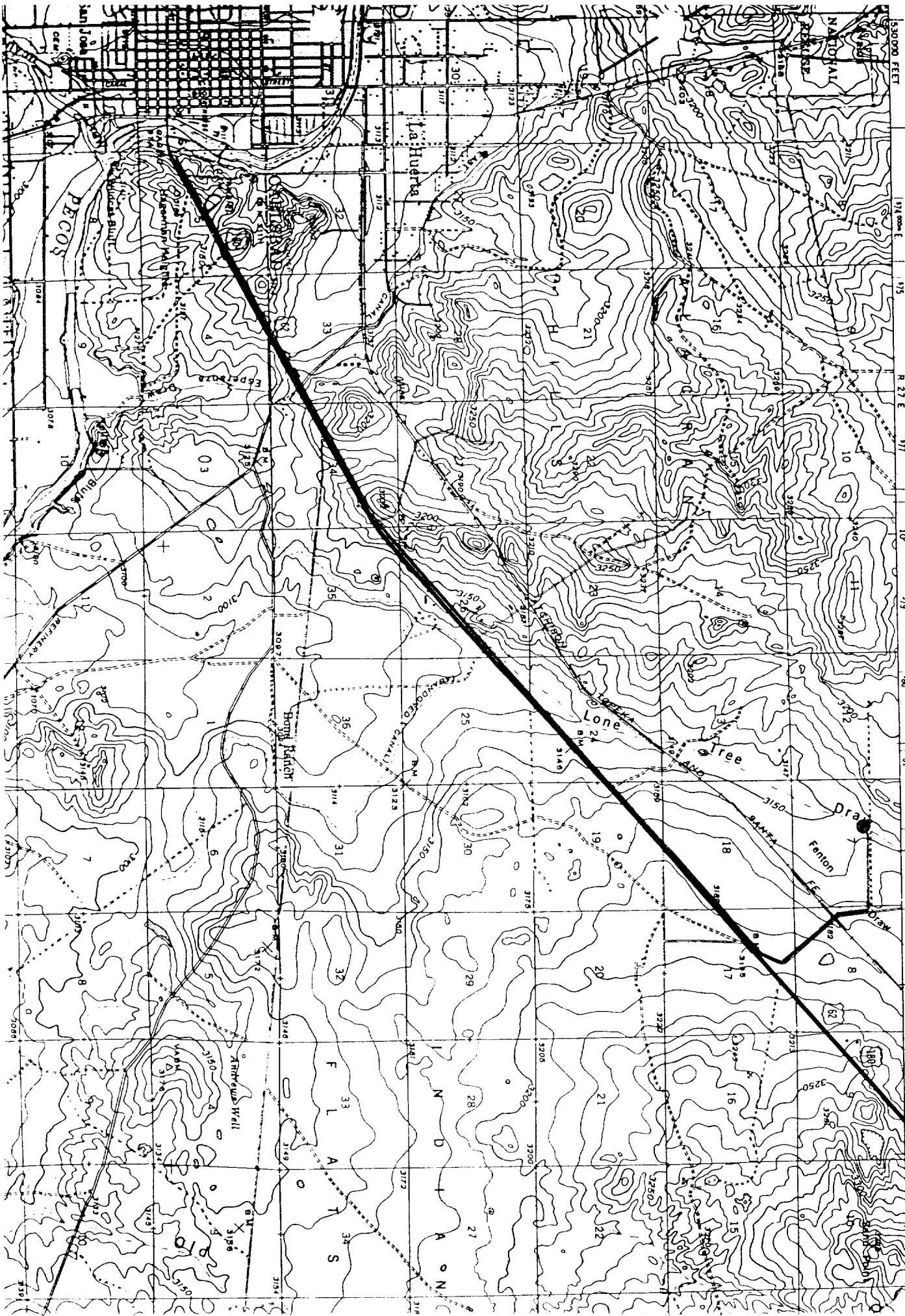
Lease No. LC-06057.-A

1. Surface Formation: Alluvium
2. Estimated Geological Marker Tops:

Capitan Reef	1190	Bone Springs	5778
Delaware Mtn. Grp	3035	Wolfcamp	9286
Indian Draw	3167		
3. Mineral Bearing Formations: Bone Springs - oil
4. Proposed Casing and Cement Program:
 - 13 3/8" Casing - Set approximately 400', 48#, J-55, ST&C casing and cement with 400 sx cement to surface.
 - 8 5/8" Casing - Set approximately 2450', 24.0#, K-55, ST&C casing and cement with 1000 sx cement to surface.
 - 5 1/2" Casing - Set 5 1/2", 17.0#, K-55, ST&C casing at total depth. Cement with 1000 sx cement in 2 stages.
5. Pressure Control Equipment: A 2000 psi working pressure BOP will be used after 8 5/8" casing is set.
6. Testing, Logging, and Coring Programs:
 - Testing: None anticipated
 - Logging: GR/CNL, LDT, NGT
 - Coring : None anticipated
7. Auxiliary Equipment: A kelly cock will be installed on the rig floor while drilling operations are in progress.

UNITED STATES
DEPARTMENT OF THE INTERIOR
GEOLOGICAL SURVEY

EXHIBIT "A"



LUBBOCK (JUNC. U.S. 84) 171 MI.
HORNS 60 MI.

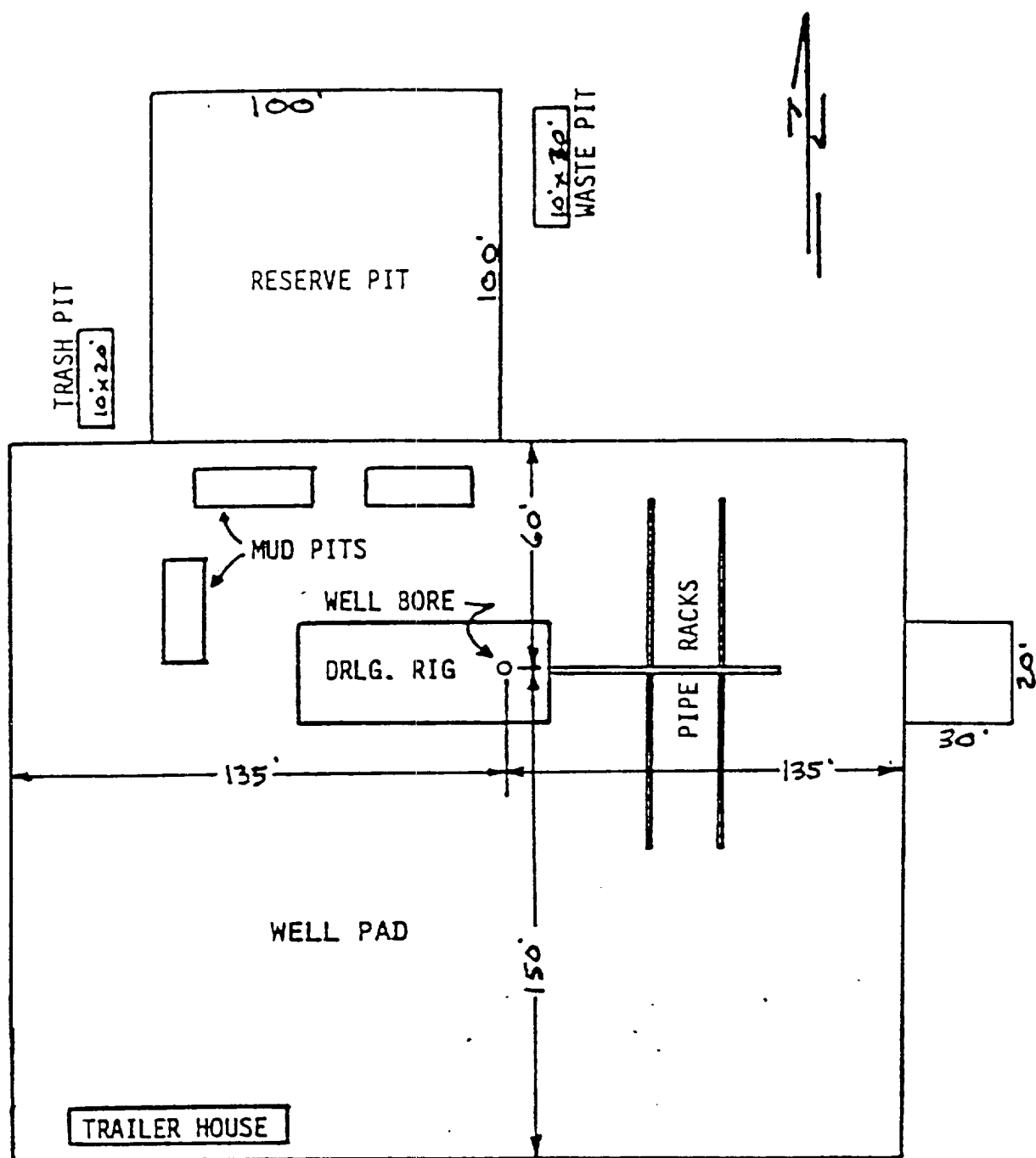


EXHIBIT "C"

AMTEX PETROLEUM, INC.

BIG EDDY WELL #92

DRILLING RIG LAYOUT
SCALE: None