

District I
PO Box 1980, Hobbs, NM 88241-1980
District II
PO Drawer DD, Azusa, NM 88211-07
District III
1000 Rio Brazos Rd., Aztec, NM 87410
District IV
PO Box 2088, Santa Fe, NM 87504-2088

Energy, Minerals & Natural Resources Department

OIL CONSERVATION DIVISION
PO Box 2088
Santa Fe, NM 87504-2088

Revised February 10, 1994
Instructions on back
Submit to Appropriate District Office
State Lease - 6 Copies
Fee Lease - 5 Copies

☐ AMENDED REPORT

APPLICATION FOR PERMIT TO DRILL, RE-ENTER, DEEPEN, PLUGBACK, OR ADD A ZONE

Operator Name and Address: PENWELL ENERGY INC. 1100 ARCO BUILDING 600 N. MERIENFELD MIDLAND, TEXAS 79701 (BILL PIERCE)		OGRID Number 147380
Property Code 22334		API Number 30-015-30011
Property Name DAKOTA SPRINGS "25" STATE		Well No. 1

7 Surface Location

UL or lot no.	Section	Township	Range	Lot Ida	Feet from the	North/South line	Feet from the	East/West line	County
E	25	20S	26E		1980'	NORTH	860'	WEST	EDDY

8 Proposed Bottom Hole Location If Different From Surface

UL or lot no.	Section	Township	Range	Lot Ida	Feet from the	North/South line	Feet from the	East/West line	County
Proposed Pool 1					Proposed Pool 2				
SPRINGS UPPER PENN-GAS 85640									

Work Type Code N	Well Type Code G	Cable/Rotary R	Lease Type Code S	Ground Level Elevation 3313' GR.
Multiple NO	Proposed Depth 9000'	Formation CISCO-CANYON	Contractor Unknown	Spud Date When Approved

21 Proposed Casing and Cement Program

Hole Size	Casing Size	Casing weight/foot	Setting Depth	Sacks of Cement	Estimated TOC
24"	20"	Conductor	40'	Redi-mix	SURFACE
17½"	13 3/8"	48	500'	450	SURFACE
12¼"	8 5/8"	24-32	2800'	1200	SURFACE
7 7/8"	5½"	15.5-17	9000'	900	2500'

Describe the proposed program. If this application is to DEEPEN or PLUG BACK give the data on the present productive zone and proposed new productive zone. Describe the blowout prevention program, if any. Use additional sheets if necessary.

1. Drill 24" hole to 40'. Set 40' of 20" conductor pipe and cement to surface with Redi-mix.
2. Drill 17½" hole to 500'. Run and set 500' of 13 3/8" 48# H-40 ST&C casing. Cement with 300 Sx. of Class "C" Halco Light + additives, tail in with 150 Sx. of Class "C" cement + 2% CaCl, circulate cement to surface.
3. Drill 12¼" hole to 2800'. Run and set 2800' of 8 5/8" 24 & 32# J-55 ST&C casing. Cement with 900 Sx. of Class "C" Halco Light cement + additives, tail in with 300 Sx. of Class "C" cement + 2% CaCl, circulate cement to surface.
4. Drill 7 7/8" to 9000'. Run and set 9000' of 5½" 15.5 & 17# J-55 & N-80 LT&C casing. Cement with 500 Sx. of Halco Light + additives, tail in with 400 Sx. of Class "H" Premium cement + additives, estimate top of cement 2500'.

I hereby certify that the information given above is true and complete to the best of my knowledge and belief.

Signature:

Printed name:

Joe T. Jernica

Title:

Agent

Date:

OIL CONSERVATION DIVISION

Approved by:

ORIGINAL SIGNED BY TIM W. GUM
DISTRICT II SUPERVISOR

Approval Date:

JAN 14 1998

Expiration Date:

1-14-99

Conditions of Approval:

DISTRICT I
P.O. Box 1980, Hobbs, NM 88240

State of New Mexico
Energy, Minerals and Natural Resources Department

Form C-102
Revised February 10, 1994
Instruction on back
Submit to Appropriate District Office
State Lease - 4 Copies
Fee Lease - 3 Copies

DISTRICT II
P.O. Drawer DD, Artesia, NM 88210

OIL CONSERVATION DIVISION

P.O. Box 2088
Santa Fe, New Mexico 87504-2088

DISTRICT III
1000 Rio Brazos Rd., Aztec, NM 87410

☐ AMENDED REPORT

WELL LOCATION AND ACREAGE DEDICATION PLAT

API Number	Pool Code 85640	Pool Name SPRINGS UPPER PENN.-GAS
Property Code	Property Name DAKOTA SPRINGS "25" STATE	Well Number 1
OGRID No. 147380	Operator Name PENWELL ENERGY INC.	Elevation 3313'

Surface Location

UL or lot No.	Section	Township	Range	Lot Idn	Feet from the	North/South line	Feet from the	East/West line	County
E	25	20 S	26 E		1980	NORTH	860	WEST	EDDY

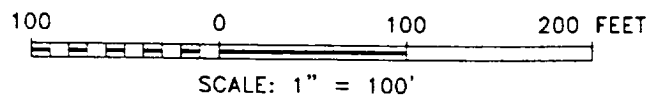
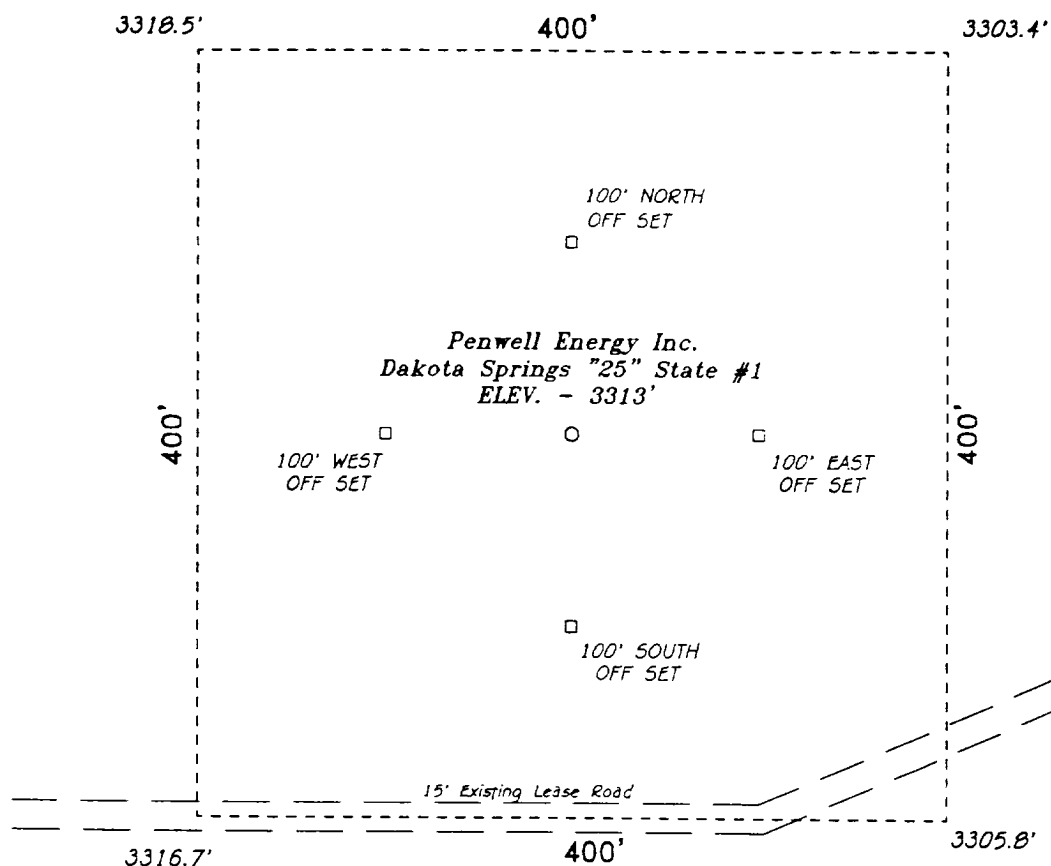
Bottom Hole Location If Different From Surface

UL or lot No.	Section	Township	Range	Lot Idn	Feet from the	North/South line	Feet from the	East/West line	County
Dedicated Acres 320	Joint or Infill	Consolidation Code	Order No.						

NO ALLOWABLE WILL BE ASSIGNED TO THIS COMPLETION UNTIL ALL INTERESTS HAVE BEEN CONSOLIDATED
OR A NON-STANDARD UNIT HAS BEEN APPROVED BY THE DIVISION

	OPERATOR CERTIFICATION I hereby certify the the information contained herein is true and complete to the best of my knowledge and belief. Signature Joe T. Janica Printed Name Agent Title 01/06/98 Date
	SURVEYOR CERTIFICATION I hereby certify that the well location shown on this plat was plotted from field notes of actual surveys made by me or under my supervision, and that the same is true and correct to the best of my belief. January 5, 1998 Date Surveyed Signature & Seal of Professional Surveyor
	W.O. No. 77560
	Certificate No. Gary A. Jones 7977
	BASIN SURVEYS

SECTION 25, TOWNSHIP 20 SOUTH, RANGE 26 EAST, N.M.P.M.,
EDDY COUNTY, NEW MEXICO.



Penwell Energy Inc.

REF: Dakota Springs "25" State No. 1 / Well Pad Topo

THE DAKOTA SPRINGS "25" STATE No. 1 LOCATED 1980'
FROM THE NORTH LINE AND 860' FROM THE WEST LINE OF
SECTION 25, TOWNSHIP 20 SOUTH, RANGE 26 EAST,
N.M.P.M., EDDY COUNTY, NEW MEXICO.

BASIN SURVEYS P.O. BOX 1786-HOBBS, NEW MEXICO

W.O. Number: 7756

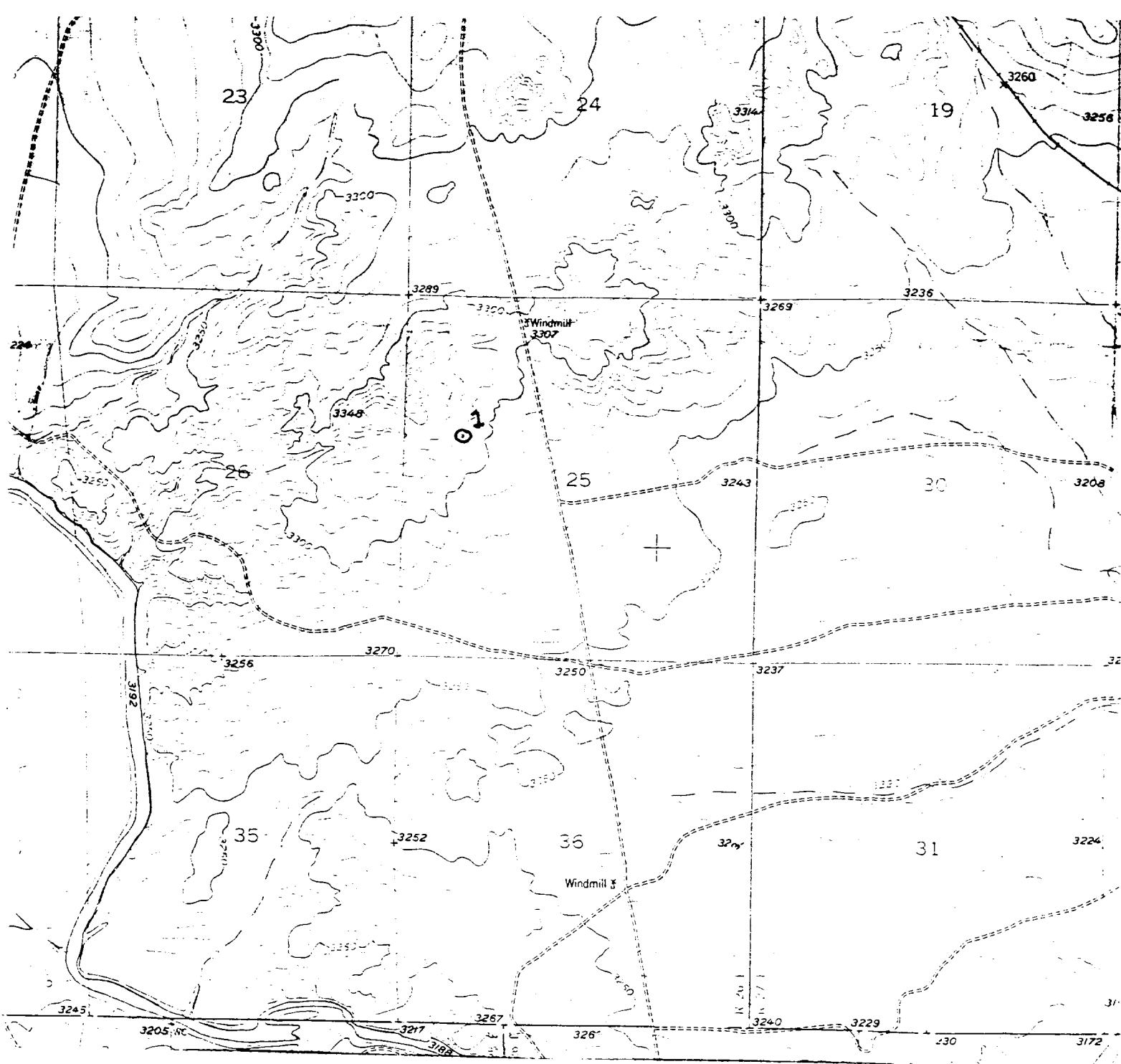
Drawn By: K. GOAD

Date: 01-05-98

Disk: KJG #76 - 7756A DWG

Survey Date: 12-31-97

Sheet 1 of 1 Sheets



PENWELL ENERGY INC.
 DAKOTA SPRINGS "25" STATE #1
 1980' FNL & 860' FWL
 Sec. 25, T-20-S, R-26-E,
 Eddy County, New Mexico.



SCALE: 1"=2000'

BASIN SURVEYS

P.O. BOX 1786-HOBBS, NEW MEXICO

2000'

0

2000'

4000 Feet

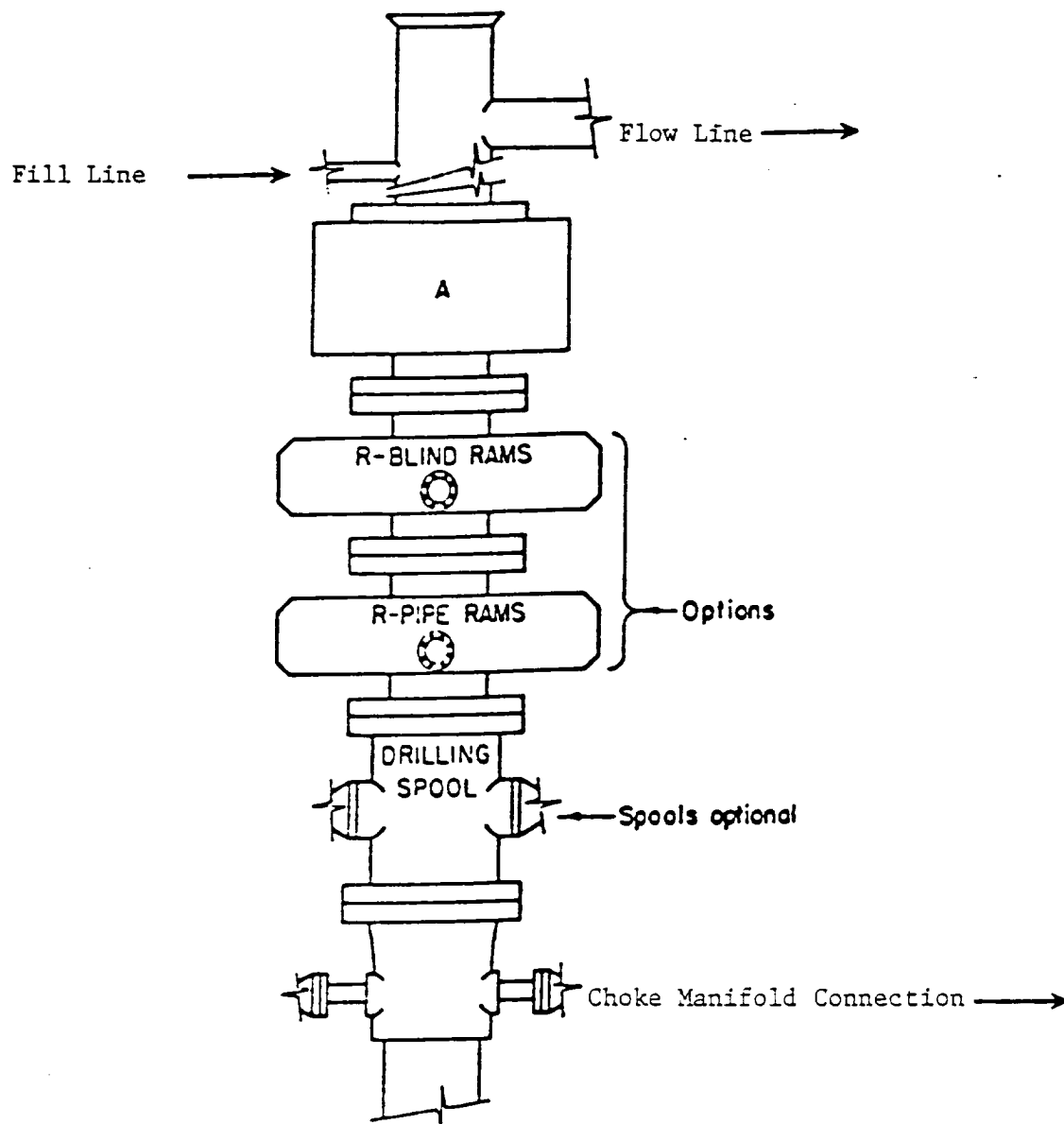


W.O. Number: 7756

Drawn By: K GOAD

Survey Date: 12-31-07

Sheet: 1 of 1



ARRANGEMENT SRRA

1500 Series
5000 PSI WP

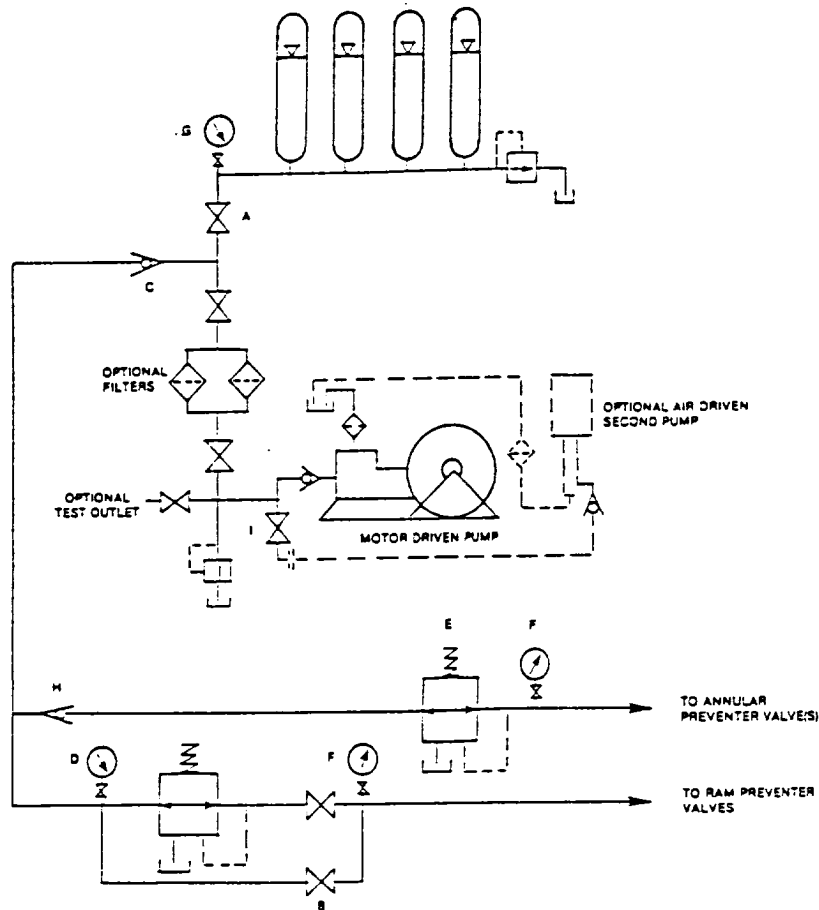


FIGURE K6-1. The schematic sketch of an accumulator system shows required and optional components.

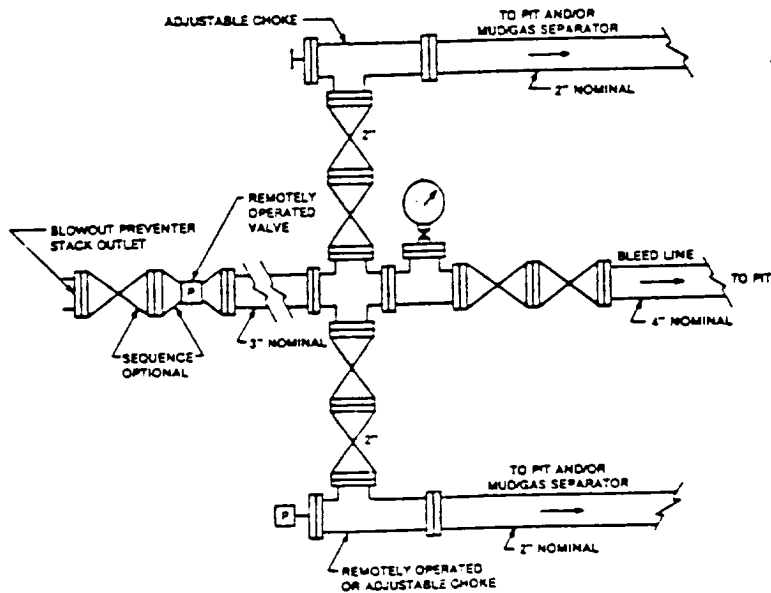


FIGURE K4-2. Typical choke manifold assembly for SM rated working pressure service — surface installation.