

UNITED STATES  
DEPARTMENT OF THE INTERIOR  
BUREAU OF LAND MANAGEMENT

## APPLICATION FOR PERMIT TO DRILL OR DEEPEN

## 1a. TYPE OF WORK

DRILL ☒DEEPEN ☐

JP 11/07/97

## b. TYPE OF WELL

OIL  
WELL ☒GAS  
WELL ☐

OTHER

SINGLE  
ZONE ☒MULTIPLE  
ZONE ☐

## 2. NAME OF OPERATOR

PENWELL ENERGY, INC.

(BILL PIERCE)

915-683-2504

## 3. ADDRESS AND TELEPHONE NO.

600 NORTH MARIENFELD, SUITE 1100 MIDLAND, TEXAS 79701

## 4. LOCATION OF WELL (Report location clearly and in accordance with any State requirements)

1980' FWL & 660' FSL SEC. 6 T20S-R28E EDDY CO. NM  
At proposed prod. zone SAME

## 14. DISTANCE IN MILES AND DIRECTION FROM NEAREST TOWN OR POST OFFICE\*

Approximately 11 miles North of Carlsbad, New Mexico

## 15. DISTANCE FROM PROPOSED\*

LOCATION TO NEAREST  
PROPERTY OR LEASE LINE, FT.  
(Also to nearest drlg. unit line, if any)

660'

## 16. NO. OF ACRES IN LEASE

331

17. NO. OF ACRES ASSIGNED  
TO THIS WELL

40

18. DISTANCE FROM PROPOSED LOCATION\*  
TO NEAREST WELL, DRILLING, COMPLETED,  
OR APPLIED FOR, ON THIS LEASE, FT.

1800'

## 19. PROPOSED DEPTH

6500'

## 20. ROTARY OR CABLE TOOLS

ROTARY

## 21. ELEVATIONS (Show whether DF, RT, GR, etc.)

3357' GR.

## 22. APPROX. DATE WORK WILL START\*

As soon as approved

## 23.

## PROPOSED CASING AND CEMENTING PROGRAM

## Capitan Controlled Water Basin

SIZE OF HOLE	GRADE, SIZE OF CASING	WEIGHT PER FOOT	SETTING DEPTH	QUANTITY OF CEMENT
25"	20" Conductor	NA	40'	Cement to surface with Redi-mix.
17½"	H-40 13 3/8"	48	450'	450 Sx. Circulate to surface.
11"	J-55 8 5/8"	32	2900'	750 Sx. Circulate to surface.
7 7/8"	J-55 5½"	15.5	6500'	600 Sx. Estimate top cement 2600'

1. Drill 25" hole to 40'. Set 40' of 20" conductor and cement to surface with Redi-mix.
2. Drill 17½" hole to 450'. Run and set 450' of 13 3/8" H-40 48# 8-R ST&C casing. Cement with 450 Sx. of Class "C" cement + 2% CaCl, circulate cement to surface.
3. Drill 2900' of 11" hole to 2900'. Run and set 2900' of 8 5/8" J-55 32# 8-R ST&C casing. Cement with 500 Sx. of Class "C" Halco Light, tail in with 250 Sx. of Class "C" + 2% CaCl, circulate cement to surface.
4. Drill 7 7/8" hole to 6500'. Run and set 6500' of 5½" J-55 15.5# 8-R ST&C casing. Cement with 400 Sx. of Class "C" Halco Light, tail in with 200 Sx. of Class "H" cement + additives, estimate top of cement 2600'.

Posted ID-1  
N&API  
1-30-98

Approved Subject to  
General Requirements and  
Special Stipulations  
Attached

IN ABOVE SPACE DESCRIBE PROPOSED PROGRAM: If proposal is to deepen, give data on present productive zone and proposed new productive zone. If proposal is to drill or deepen directionally, give pertinent data on subsurface locations and measured and true vertical depths. Give blowout preventer program, if any.

## 24.

SIGNED

*Joel Jancea*

TITLE Agent

DATE 11/06/97

(This space for Federal or State office use)

PERMIT NO.

APPROVAL DATE

Application approval does not warrant or certify that the applicant holds legal or equitable title to those rights in the subject lease which would entitle the applicant to conduct operations thereon.  
CONDITIONS OF APPROVAL, IF ANY:

(ORIG SGD.) JOHN S. SIMITZ

APPROVED BY

TITLE

*Acting* ADM. MINERALS

DATE

*1-15-98*

\*See Instructions On Reverse Side

JOHN F. LAND HUNT  
ROSWELL OFFICE

1997 NOV -7 A 11:38

RECEIVED

DISTRICT I  
P.O. Box 1980, Hobbs, NM 88240

DISTRICT II  
P.O. Drawer DD, Artesia, NM 88210

DISTRICT III  
1000 Rio Brazos Rd., Aztec, NM 87410

State of New Mexico  
Energy, Minerals and Natural Resources Department

Form C-102  
Revised February 10, 1994  
Instruction on back  
Submit to Appropriate District Office  
State Lease - 4 Copies  
Fee Lease - 3 Copies

OIL CONSERVATION DIVISION  
P.O. Box 2088  
Santa Fe, New Mexico 87504-2088

☐ AMENDED REPORT

WELL LOCATION AND ACREAGE DEDICATION PLAT

API Number	Pool Code	Pool Name
	48035	OLD MILLMAN RANCH ASSOC. BONE SPRING
Property Code	Property Name	Well Number
	Angel "6" Federal	4
OGRID No.	Operator Name	Elevation
147380	Penwell Energy Inc.	3357'

Surface Location

UL or lot No.	Section	Township	Range	Lot Idn	Feet from the	North/South line	Feet from the	East/West line	County
N	6	20 S	28 E		660	South	1980	West	Eddy

Bottom Hole Location If Different From Surface

UL or lot No.	Section	Township	Range	Lot Idn	Feet from the	North/South line	Feet from the	East/West line	County
Dedicated Acres	Joint or Infill	Consolidation Code	Order No.						
40									

NO ALLOWABLE WILL BE ASSIGNED TO THIS COMPLETION UNTIL ALL INTERESTS HAVE BEEN CONSOLIDATED  
OR A NON-STANDARD UNIT HAS BEEN APPROVED BY THE DIVISION

Lot 4	Lot 3	Lot 2	Lot 1
Lot 5			
Lot 6			
Lot 7			

Diagram showing well location and acreage. The well is located in Lot 7, 660 feet from the South line, 1980 feet from the West line, and 3356.2 feet from the North line. The well is 3351.0 feet from the East line, 3356.8 feet from the South line, and 3350.4 feet from the East line.

OPERATOR CERTIFICATION

I hereby certify the the information contained herein is true and complete to the best of my knowledge and belief

Signature: Joe T. Janica

Printed Name: Joe T. Janica

Title: Agent

Date: 11/06/97

SURVEYOR CERTIFICATION

I hereby certify that the well location shown on this plat was plotted from field notes of actual surveys made by me or under my supervision, and that the same is true and correct to the best of my belief

October 30, 1997

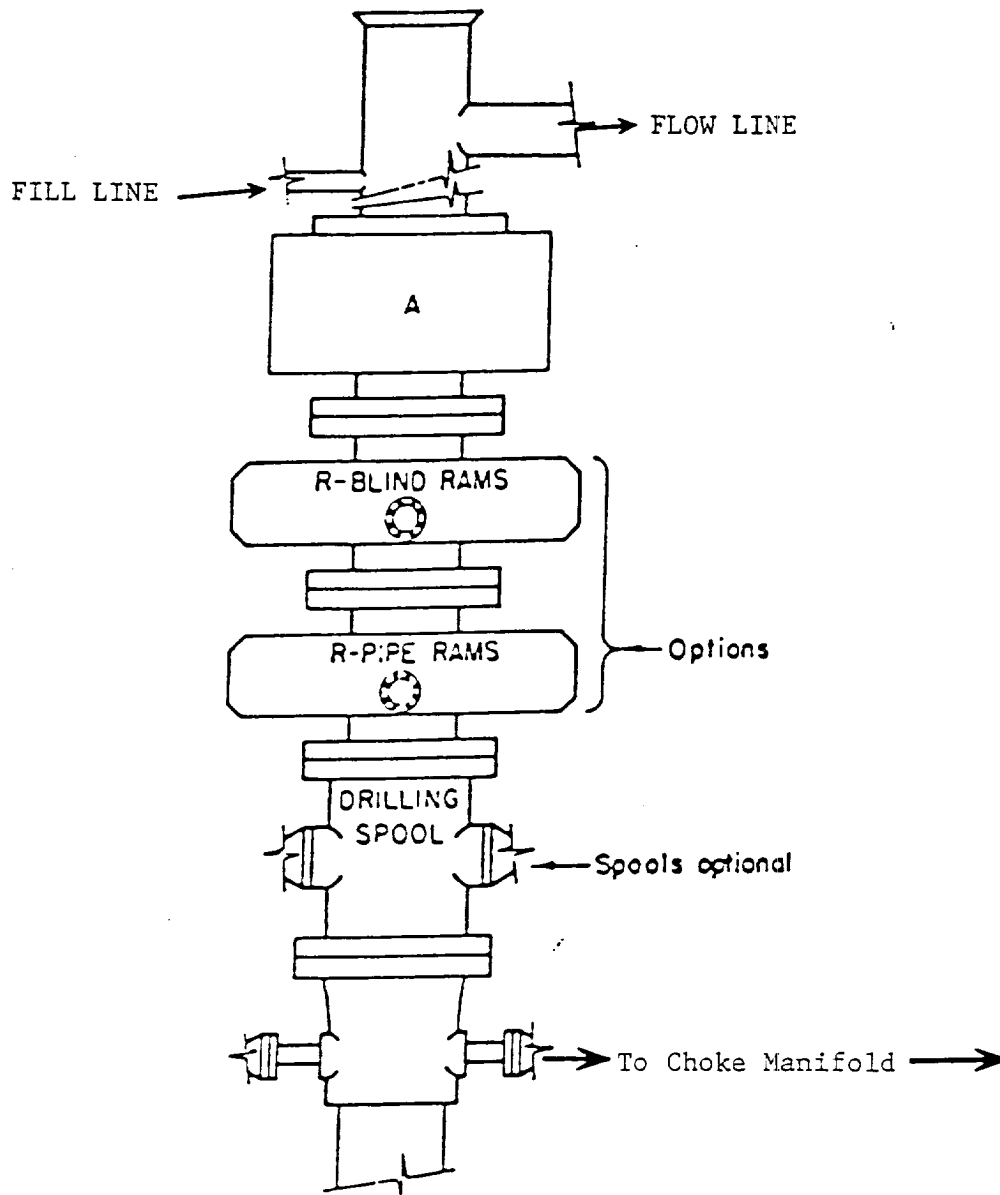
Date Surveyed: October 30, 1997

Signature & Seal: Gary L. Jones

Professional Surveyor No. 7625E

Certificate No. 7625E

Basin Survey 3

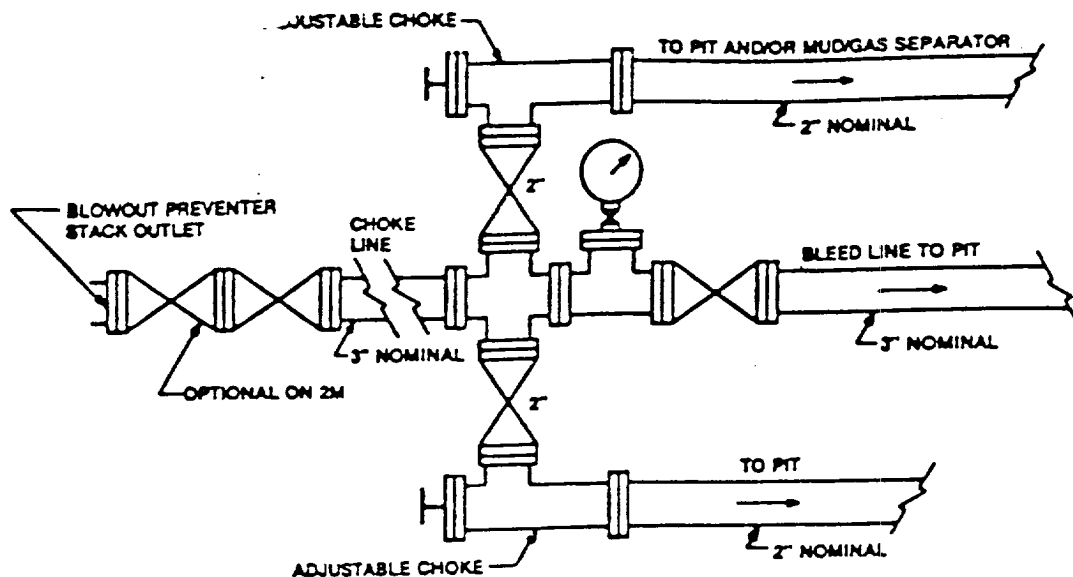


# **ARRANGEMENT SRRA**

900 Series  
3000 PSI WP

EXHIBIT "E"  
B.O.P. SKETCH TO BE USED ON

PENWELL ENERGY, INC.  
ANGEL "6" FEDERAL # 4  
UNIT "N" SECTION 6  
T20S-R28E EDDY CO. NM



Typical choke manifold assembly for 3M WP system

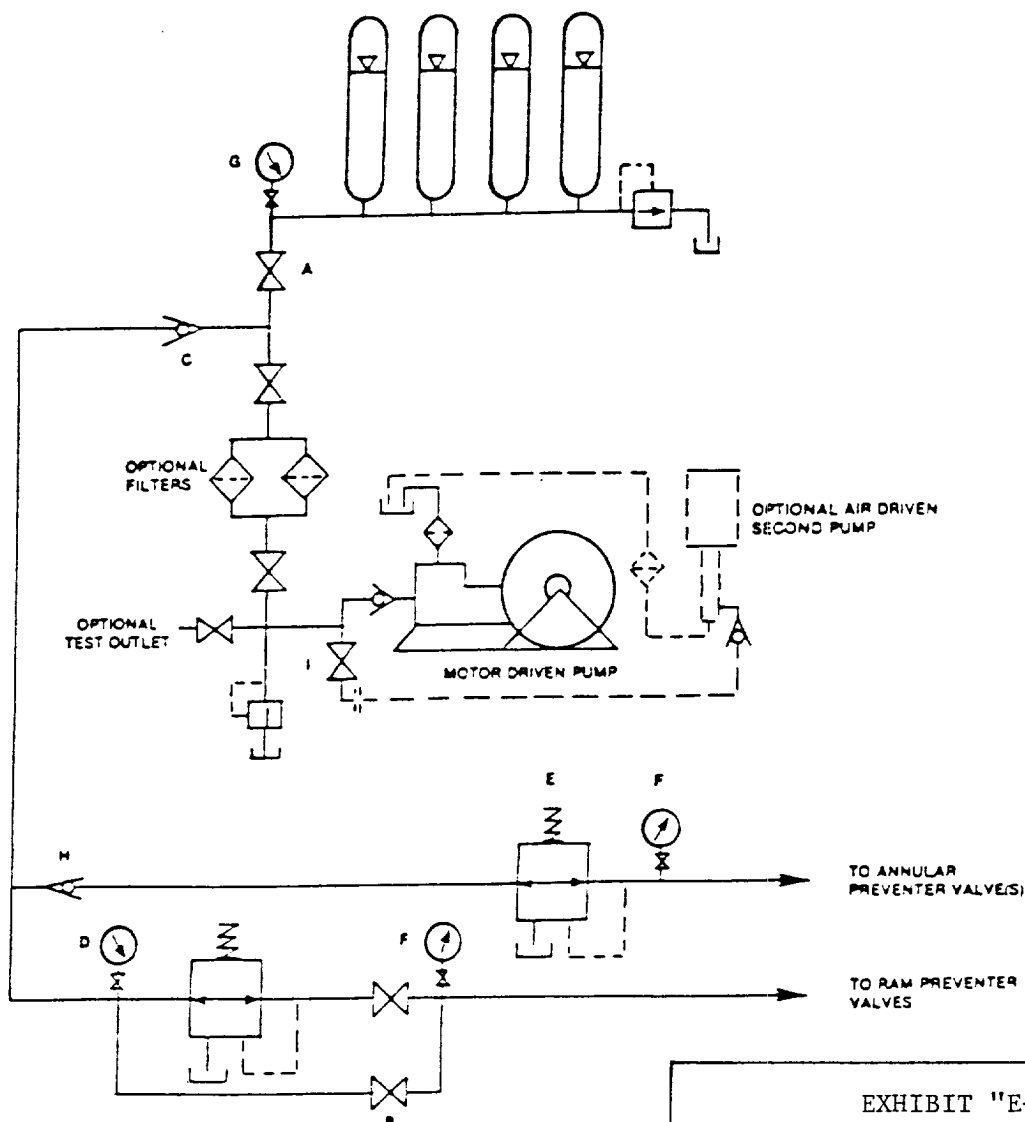


EXHIBIT "E-1"  
CHOKE MANIFOLD & CLOSING UNIT

PENWELL ENERGY, INC.  
ANGEL "6" FEDERAL # 4  
UNIT "N" SECTION 6  
T20S-R28E EDDY CO. NM