

UNITED STATES  
DEPARTMENT OF THE INTERIOR  
BUREAU OF LAND MANAGEMENT

SUBMIT IN "ARTESIA, (Other just on Reverse Side)"

FORM APPROVED  
OMB NO. 1004-0136  
Expires: February 28, 1995

APPLICATION FOR PERMIT TO DRILL OR DEEPEN

1a. TYPE OF WORK

DRILL ☒

DEEPEN ☐

b. TYPE OF WELL

OIL WELL ☐

GAS WELL ☐

OTHER SWD

SINGLE ZONE ☒

MULTIPLE ZONE ☐

2. NAME OF OPERATOR

Santa Fe Energy Resources, Inc.

20305

3. ADDRESS AND TELEPHONE NO.

550 W. Texas, Suite 1330; Midland, Texas 79701 (915)682-6373

4. LOCATION OF WELL (Report location clearly and in accordance with any State requirements.)\*

At surface

(K) 1854' FSL & 1921' FWL

At proposed prod. zone

14. DISTANCE IN MILES AND DIRECTION FROM NEAREST TOWN OR POST OFFICE\*

15 miles west of Carlsbad, New Mexico

10. DISTANCE FROM PROPOSED\* LOCATION TO NEAREST PROPERTY OR LEASE LINE, FT. (Also to nearest drig. unit line, if any)

740'

16. NO. OF ACRES IN LEASE

160

17. NO. OF ACRES ASSIGNED TO THIS WELL

0

18. DISTANCE FROM PROPOSED LOCATION\* TO NEAREST WELL, DRILLING, COMPLETED, OR APPLIED FOR, ON THIS LEASE, FT.

1243'

19. PROPOSED DEPTH

11400'

20. ROTARY OR CABLE TOOLS

Rotary

21. ELEVATIONS (Show whether DF, RT, GR, etc.)

4122.28 GR

22. APPROX. DATE WORK WILL START\*

April 15, 1998

23.

PROPOSED CASING AND CEMENTING PROGRAM

SIZE OF HOLE	GRADE, SIZE OF CASING	WEIGHT PER FOOT	SETTING DEPTH	QUANTITY OF CEMENT
17 1/2"	H-40 13 3/8"	48#	850'	400 sx to circulate
12 1/4"	K-55 9 5/8"	36#	2500'	200 sx to circulate
8 3/4"	K-55, C-90 7"	26#	11400'	TOC @ 6000'

We propose to drill to a depth sufficient to penetrate the Devonian/Montoya formations. If sufficient porosity and permeability are encountered, 7" casing will be run to TD and the well will be completed as a salt water disposal well. Specific programs as per Onshore Oil and Gas Order No. 1 are outlined in the following attachments:

Drilling Program

Exhibit A - Operations Plan

Exhibit B - BOP and Choke Manifold

Exhibit C - Drilling Fluid Program

Exhibit D - Auxiliary Equipment

Exhibit E - Topo Map of Location

Exhibit F - Map Showing Existing Wells

Exhibit F (A) - Plat of Location

Exhibit G - Well Site Layout

Surface Use and Operations Plan

H2S Drilling Operations Plan

This application was previously approved in April, 1995 and November, 1996. Location is built.

Santa Fe Energy Resources, Inc. accepts all applicable terms, conditions, stipulations and restrictions concerning operations conducted on the leased land or portion thereof, as described above.

Bond Coverage: Blanket Bond

BLM Bond File No.: MT 0750

IN ABOVE SPACE DESCRIBE PROPOSED PROGRAM: If proposal is to deepen, give data on present productive zone and proposed new productive zone. If proposal is to drill or deepen directionally, give pertinent data on subsurface locations and measured and true vertical depths. Give blowout preventer program, if any.

24.

SIGNED

James P. Phil Stinson

Agent for Santa Fe Energy

TITLE

DATE 3-31-98

(This space for Federal or State office use)

PERMIT NO.

APPROVAL DATE

Application approval does not warrant or certify that the applicant holds legal or equitable title to those rights in the subject lease which would entitle the applicant to conduct operations thereon.  
CONDITIONS OF APPROVAL, IF ANY:

(ORIG. SGD.) JOHN S. SIMITZ

JUN 11 1998

APPROVED BY

for TITLE ASSISTANT FIELD OFFICE MGR. DATE

See Instructions On Reverse Side

P. O. Box 1980  
Hobbs, NM 88241-1980

State of New Mexico  
Energy, Minerals, and Natural Resources Department

Revised 02-10-94

Instructions on back

DISTRICT II

P. O. Drawer DD  
Artesia, NM 88211-0719

DISTRICT III

1000 Rio Brazos Rd.  
Aztec, NM 87410

DISTRICT IV

P. O. Box 2088  
Santa Fe, NM 87507-2088

**OIL CONSERVATION DIVISION**

P. O. Box 2088  
Santa Fe, New Mexico 87504-2088

Submit to the Appropriate  
District Office  
State Lease - 4 copies  
Fee Lease - 3 copies

☐ AMENDED REPORT

**WELL LOCATION AND ACREAGE DEDICATION PLAT**

1 API Number		2 Pool Code		3 Pool Name Wildcat (SWD)			
4 Property Code		5 Property Name Knoll "8" OLD RANCH #1000 FEDERAL				6 Well Number 4	
7 OGRID No.		8 Operator Name SANTA FE ENERGY OPER. PART, L.P.				9 Elevation 4122'	

**10 SURFACE LOCATION**

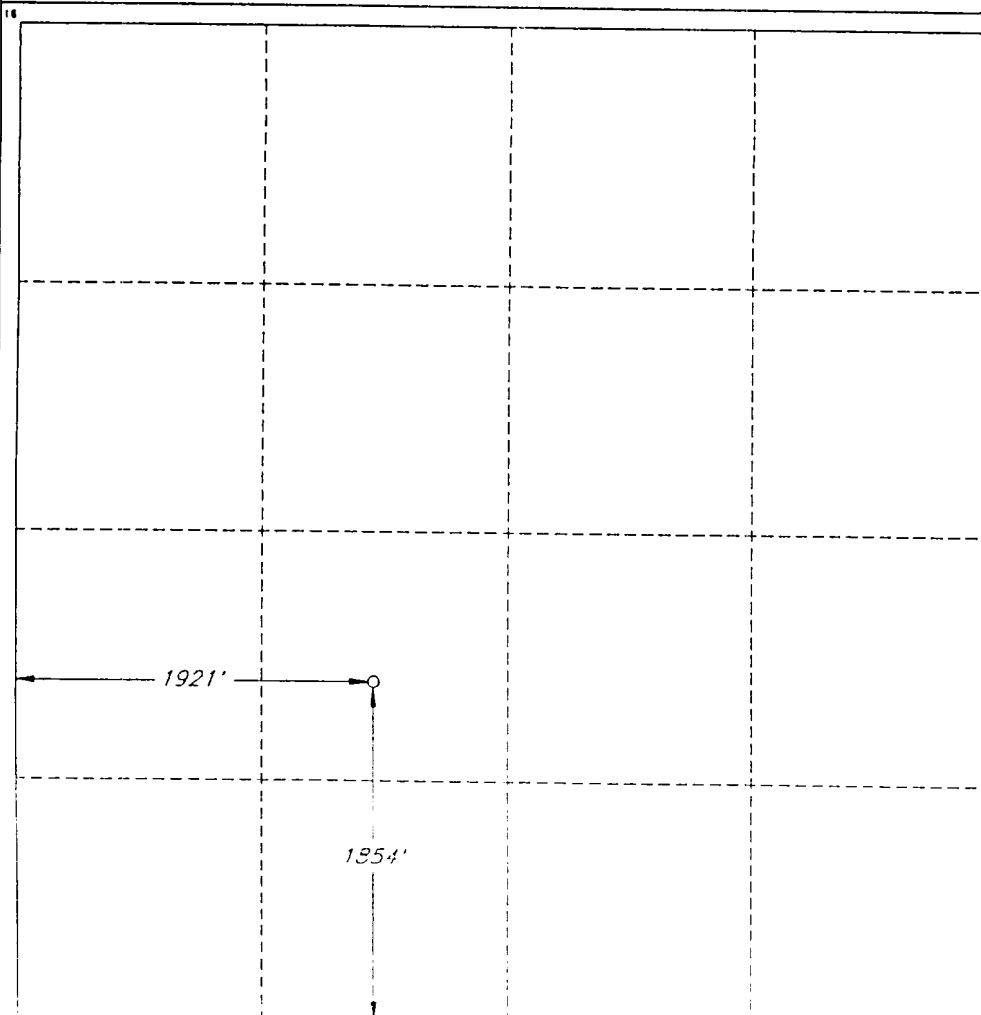
UL or lot no. K	Section 8	Township 22 SOUTH	Range 24 EAST, N.M.P.M.	Lot Ida	Feet from the 1854'	North/South line SOUTH	Feet from the 1854' 1921'	East/West line WEST	County EDDY
--------------------	--------------	----------------------	----------------------------	---------	------------------------	---------------------------	------------------------------	------------------------	----------------

**"BOTTOM HOLE LOCATION IF DIFFERENT FROM SURFACE**

UL or lot no.	Section	Township	Range	Lot Ida	Feet from the	North/South line	Feet from the	East/West line	County
---------------	---------	----------	-------	---------	---------------	------------------	---------------	----------------	--------

12 Dedicated Acres 0	13 Joint or Infill	14 Consolidation Code	15 Order No.
-------------------------	--------------------	-----------------------	--------------

NO ALLOWABLE WELL BE ASSIGNED TO THIS COMPLETION UNTIL ALL INTERESTS HAVE BEEN  
CONSOLIDATED OR A NON-STANDARD UNIT HAS BEEN APPROVED BY THE DIVISION



**OPERATOR CERTIFICATION**

I hereby certify that the information  
contained herein is true and complete  
to the best of my knowledge and belief.

Signature  
*James P. "Phil" Stinson*  
Printed Name  
James P. "Phil" Stinson  
Title  
Agent for Santa Fe Resources  
Date  
February 6, 1995

**SURVEYOR CERTIFICATION**

I hereby certify that the well  
location shown on this plat was  
plotted from field notes of actual  
surveys made by me or under  
my supervision, and that the  
same is true and correct to the  
best of my belief.

Date of Survey  
FEBRUARY 2, 1995

Signature and Seal of  
Professional Surveyor  
*V. J. BEZNER*  
STATE OF NEW MEXICO  
V. J. BEZNER  
R.P.S. #7320

**EXHIBIT B**  
**BOP AND CHOKE ARRANGEMENT**  
**SANTA FE ENERGY RESOURCES, INC.**  
**OLD RANCH KNOLL "8" FED #4**  
**1854 FSL & 1921 FWL**  
**SEC 8, T-22-S, R-24-E**  
**EDDY COUNTY, NEW MEXICO**

