

District I
P.O. Box 1980, Hobbs, NM 88241-1980
District II
P.O. Drawer DD, Artesia, NM 88211-0719
District III
1000 Rio Brazos Rd., Aztec, NM 87410
District IV
P.O. Box 2088, Santa Fe, NM 87504-2088

State of New Mexico
Energy, Minerals & Natural Resources Department

OIL CONSERVATION DIVISION
PO Box 2088
Santa Fe, NM 87504-2088

C15F
09

Form C-101
Revised February 10, 1994
Instructions on back
Submit to Appropriate District Office
State Lease - 6 Copies
Fee Lease - 5 Copies



AMENDED REPORT

APPLICATION FOR PERMIT TO DRILL, RE-ENTER, DEEPEN, PLUGBACK, OR ADD A ZONE

² Operator Name and Address. Devon Energy Corporation (Nevada) 1500 Mid America Tower 20 N. Broadway Oklahoma City, OK 73102-8260		¹ OGRID Number 6137
		³ API Number 30-015- 30337
⁴ Property Code 23872	⁵ Property Name WINSTON	⁶ Well No. 4 SWD

⁷ Surface Location

UL or lot no. 2	Section 31	Township 21S	Range 24E	Lot Ids	Feet from the 1535	North/South line NORTH	Feet from the 660	East/West line WEST	County EDDY
--------------------	---------------	-----------------	--------------	---------	-----------------------	---------------------------	----------------------	------------------------	----------------

⁸ Proposed Bottom Hole Location If Different From Surface

UL or lot no.	Section	Township	Range	Lot Ids	Feet from the	North/South line	Feet from the	East/West line	County
⁹ Proposed Pool 1 SWD (Devonian)					¹⁰ Proposed Pool 2				

¹¹ Work Type Code N	¹² Well Type Code S	¹³ Cable/Rotary R	¹⁴ Lease Type Code	¹⁵ Ground Level Elevation 3810'
¹⁶ Multiple No	¹⁷ Proposed Depth 11,400'	¹⁸ Formation Devonian	¹⁹ Contractor unknown at this time	²⁰ Spud Date November, 1998

²¹ Proposed Casing and Cement Program

Hole Size	Casing Size	Casing weight/foot	Setting Depth	Sacks of Cement	Estimated TOC
17 1/2"	13 3/8" H-40	48	40'	Redimix	surface
12 1/4"	9 5/8" J-55	32	1,500'	800	surface
8 3/4"	7" J-55 & L-80	23 & 26 & 29	10,600'	1100	6,500'
6 1/8"	open hole		to 11,400'		

²² Describe the proposed program. If this application is to DEEPEN or PLUG BACK give the data on the present productive zone and proposed new productive zone. Describe the blowout prevention program, if any. Use additional sheets if necessary.

Devon plans to drill a Devonian salt water disposal well to +/-11,400 feet. If the well is deemed uneconomical, the well bore will be plugged and abandoned in accordance with the rules and regulations established by the New Mexico OCD. Blowout prevention equipment will be installed while drilling the intermediate and disposal holes.

²³ I hereby certify that the information given above is true and complete to the best of my knowledge and belief.

Signature: Candace R. Graham

Printed name Candace R. Graham

Title: Engineer Technician

Date: November 18, 1998

Phone: (405) 235-3611 X4520

OIL CONSERVATION DIVISION

Approved by: ORIGINAL SIGNED BY TIM W. GUM
DISTRICT II SUPERVISOR

Title:

Approval Date: 11-30-98

Expiration Date: 11-30-99

Conditions of Approval:

Attached

DISTRICT I
P. O. Box 1980
Hobbs, NM 88241-1980

State of New Mexico
Energy, Minerals, and Natural Resources Department

Form C-102
Revised 02-10-94
Instructions on back

DISTRICT II
P. O. Drawer DD
Artesia, NM 88211-0719

OIL CONSERVATION DIVISION
P. O. Box 2088
Santa Fe, New Mexico 87504-2088

Submit to the Appropriate
District Office
State Lease - 4 copies
Fee Lease - 3 copies

DISTRICT III
1000 Rio Brazos Rd.
Aztec, NM 87410

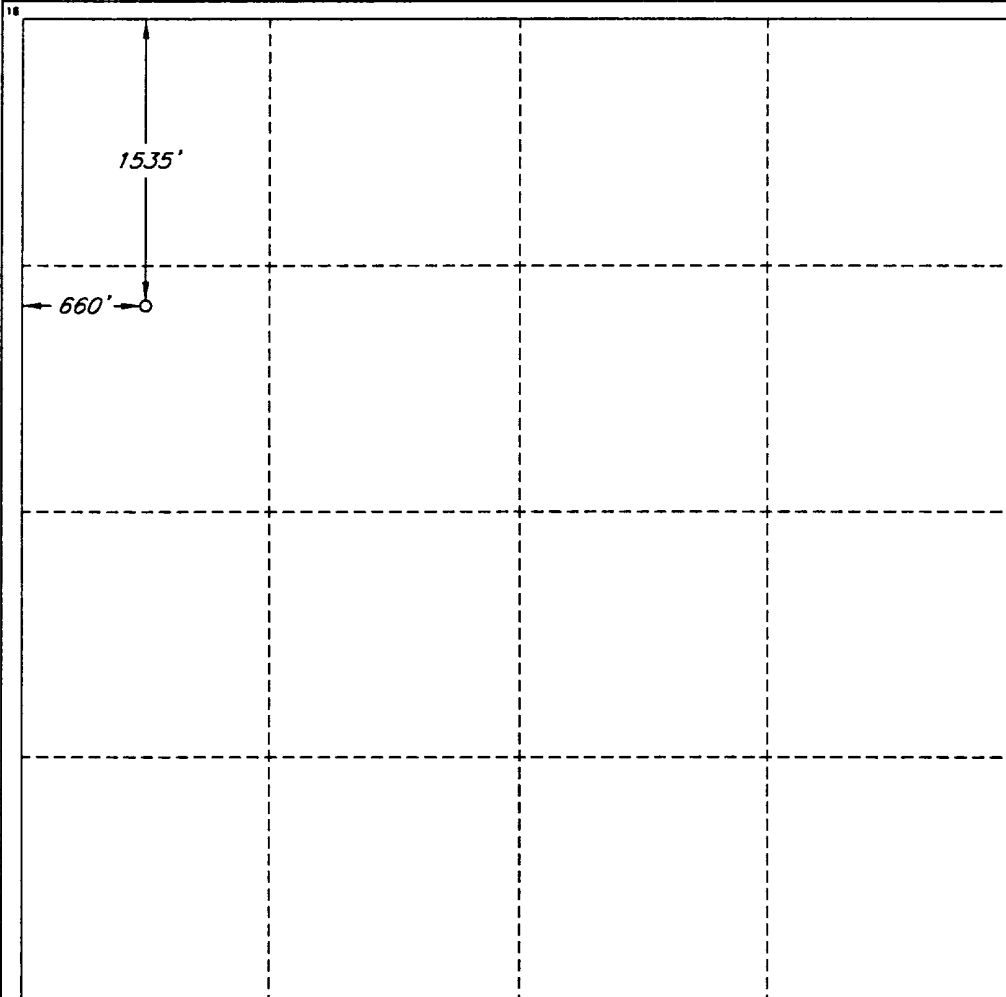
☐ AMENDED REPORT

DISTRICT IV
P. O. Box 2088
Santa Fe, NM 87507-2088

WELL LOCATION AND ACREAGE DEDICATION PLAT

¹ API Number 30-015-30337		² Pool Code 96101		³ Pool Name SWD (Devonian)					
⁴ Property Code		⁵ Property Name WINSTON GASCOIN						⁶ Well Number 4 SWD	
⁷ OGRID No. 6137		⁸ Operator Name DEVON ENERGY CORPORATION (NEVADA)						⁹ Elevation 3810'	
¹⁰ SURFACE LOCATION									
UL or lot no. LOT 2	Section 31	Township 21 SOUTH	Range 24 EAST, N.M.P.M.	Lot Ida	Feet from the 1535'	North/South line NORTH	Feet from the 660'	East/West line WEST	County EDDY
¹¹ BOTTOM HOLE LOCATION IF DIFFERENT FROM SURFACE									
UL or lot no.	Section	Township	Range	Lot Ida	Feet from the	North/South line	Feet from the	East/West line	County
¹² Dedicated Acres		¹³ Joint or Infill		¹⁴ Consolidation Code		¹⁵ Order No.			

NO ALLOWABLE WELL BE ASSIGNED TO THIS COMPLETION UNTIL ALL INTERESTS HAVE BEEN
CONSOLIDATED OR A NON-STANDARD UNIT HAS BEEN APPROVED BY THE DIVISION



OPERATOR CERTIFICATION

I hereby certify that the information
contained herein is true and complete
to the best of my knowledge and belief.

Signature
Candace R. Graham

Printed Name
Candace R. Graham

Title
Engineering Tech.

Date
November 18, 1998

SURVEYOR CERTIFICATION

I hereby certify that the well
location shown on this plat was
plotted from field notes of actual
surveys made by me or under
my supervision, and that the
same is true and correct to the
best of my belief.

Date of Survey
November 18, 1998

Signature
Professional Surveyor

REGISTERED PROFESSIONAL SURVEYOR
12128

Certificate No.
ROGER M. ROBBINS P.S. #12128

JOB #59523 / 51 NE / V.H.B.

New Mexico Oil Conservation Division
C-102 Instructions

IF THIS IS AN AMENDED REPORT, CHECK THE BOX LABELED "AMENDED REPORT" AT THE TOP OF THIS DOCUMENT.

Surveyors shall use the latest United States government survey or dependent resurvey. Well locations will be in reference to the New Mexico Principal Meridian. If the land is not surveyed contact the appropriate OCD district office. Independent subdivision surveys will not be acceptable.

1. The OCD assigned API number for this well
2. The pool code for this (proposed) completion
3. The pool name for this (proposed) completion
4. The property code for this (proposed) completion
5. The property name (well name) for this (proposed) completion
6. The well number for this (proposed) completion
7. Operator's OGRID number
8. The operator's name
9. The ground level elevation of this well
10. The surveyed surface location of this well measured from the section lines. NOTE: If the United States government survey designates a Lot Number for this location use that number in the "UL or lot no." box. Otherwise use the OCD unit letter.
11. Proposed bottom hole location. If this is a horizontal hole indicate the location of the end of the hole.
12. The calculated acreage dedicated to this completion to nearest hundredth of an acre
13. Put a Y if more than one completion will be sharing this same acreage or N if this is the only completion on this acreage
14. If more than one lease of different ownership has been dedicated to the well show the consolidation code from the following table:

C	Communitization
U	Unitization
F	Forced pooling
O	Other
P	Consolidation pending

NO ALLOWABLE WILL BE ASSIGNED TO THIS COMPLETION UNTIL ALL INTERESTS HAVE BEEN CONSOLIDATED OR A NON-STANDARD UNIT HAS BEEN APPROVED BY THE DIVISION!

15. Write in the OCD order(s) approving a non-standard location, non-standard spacing, or directional or horizontal drilling

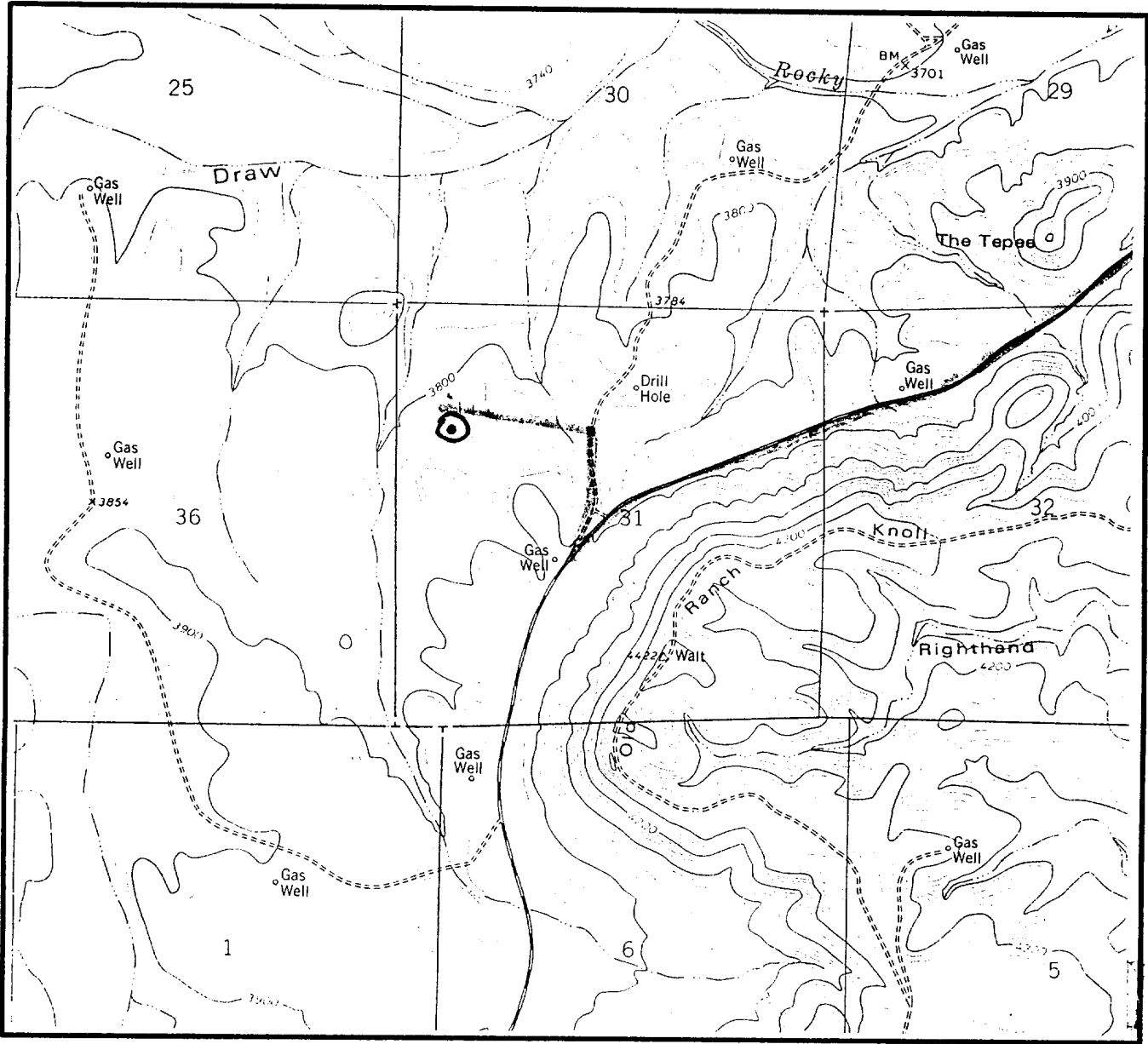
16. This grid represents a standard section. You may superimpose a non-standard section over this grid. Outline the dedicated acreage and the separate leases within that dedicated acreage. Show the well surface location and bottom hole location, if it is directionally drilled, with the dimensions from the section lines in the dimensions from the section lines in the cardinal directions. (Note: A legal location is determined from the perpendicular distance to the edge of the tract.) If this is a high angle or horizontal hole show that portion of the well bore that is open within this pool.

Show all lots, lot numbers, and their respective acreage.

If more than one lease has been dedicated to this completion, outline each one and identify the ownership as to both working interest and royalty.

17. The signature, printed name, and title of the person authorized to make this report, and the date this document was signed.
18. The Registered surveyors certification. This section does not have to be completed if this form has been previously accepted by the OCD and is being filed for a change of pool or dedicated acreage.

LOCATION & ELEVATION VERIFICATION MAP



SCALE : 1" = 2000'

CONTOUR INTERVAL 20'

SECTION 31 TWP 21-S RGE 24-E
SURVEY NEW MEXICO PRINCIPAL MERIDIAN
COUNTY EDDY STATE NM
DESCRIPTION 1535' FNL & 660' FWL
ELEVATION 3810'

OPERATOR DEVON ENERGY CORPORATION (NEVADA)
LEASE WINSTON GAS CO. #4 SWD

U.S.G.S. TOPOGRAPHIC MAP
MARTHA CREEK, NEW MEXICO

LAT. N 32°26'17.4"
LONG. W 104°32'40.3"



This location has been very carefully staked on the ground according to the best official survey records, maps, and other data available to us.
Review this plot and notify us immediately of any possible discrepancy.

TOPOGRAPHIC LAND SURVEYORS

Surveying & Mapping for the Oil & Gas Industry

1307 N. HOBART
PAMPA, TX. 79065
(800) 658-6382

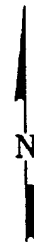
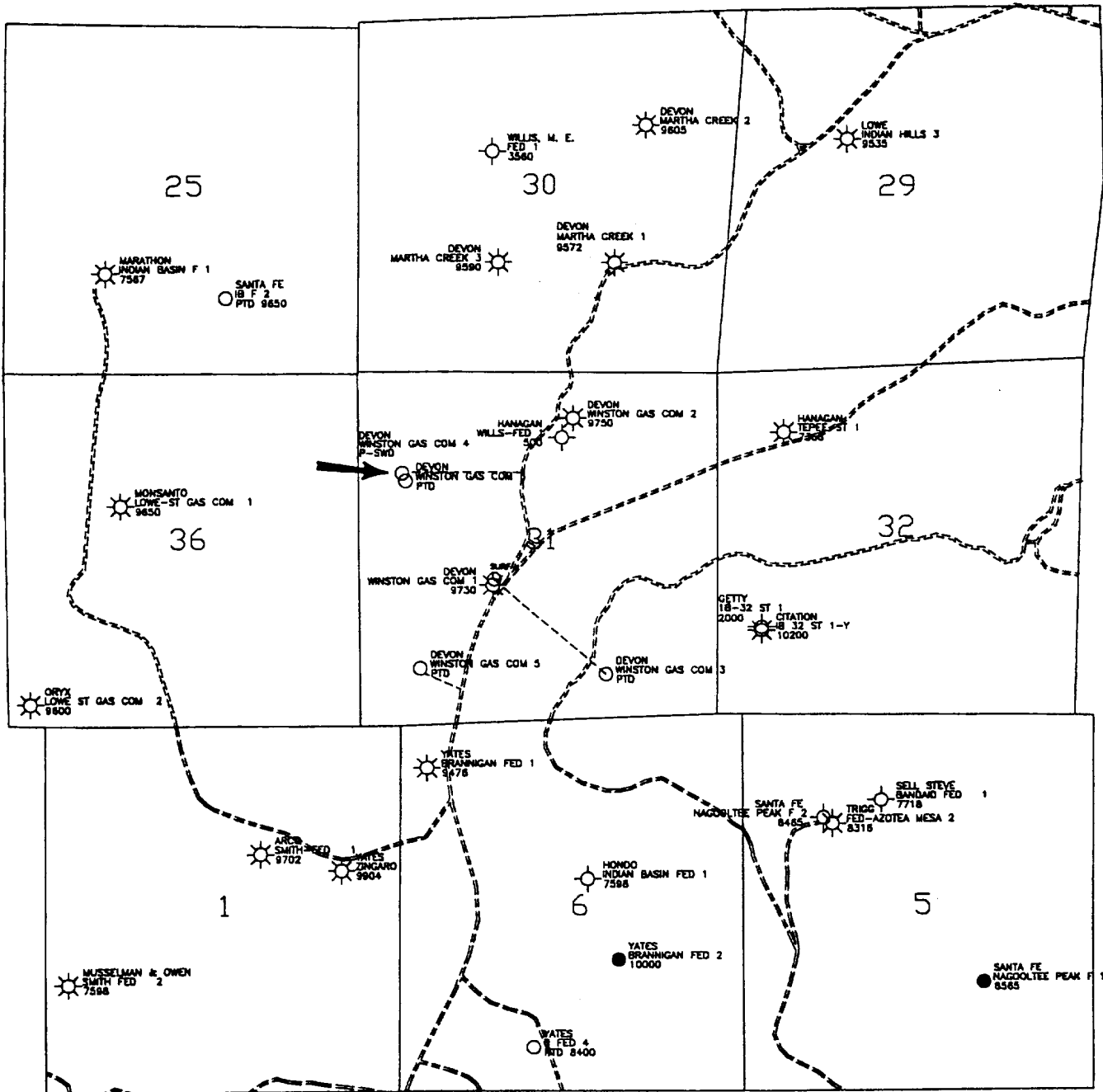
6709 N. CLASSEN BLVD.
OKLAHOMA CITY, OK. 73116
(800) 654-3219

2903 N. BIG SPRING
MIDLAND, TX. 79705
(800) 767-1653

R 23 E

R 24 E

T 21 S



devon
ENERGY SERVICES

INDIAN BASIN AREA EDDY COUNTY, NEW MEXICO

ROAD PLAT
WINSTON GAS COM

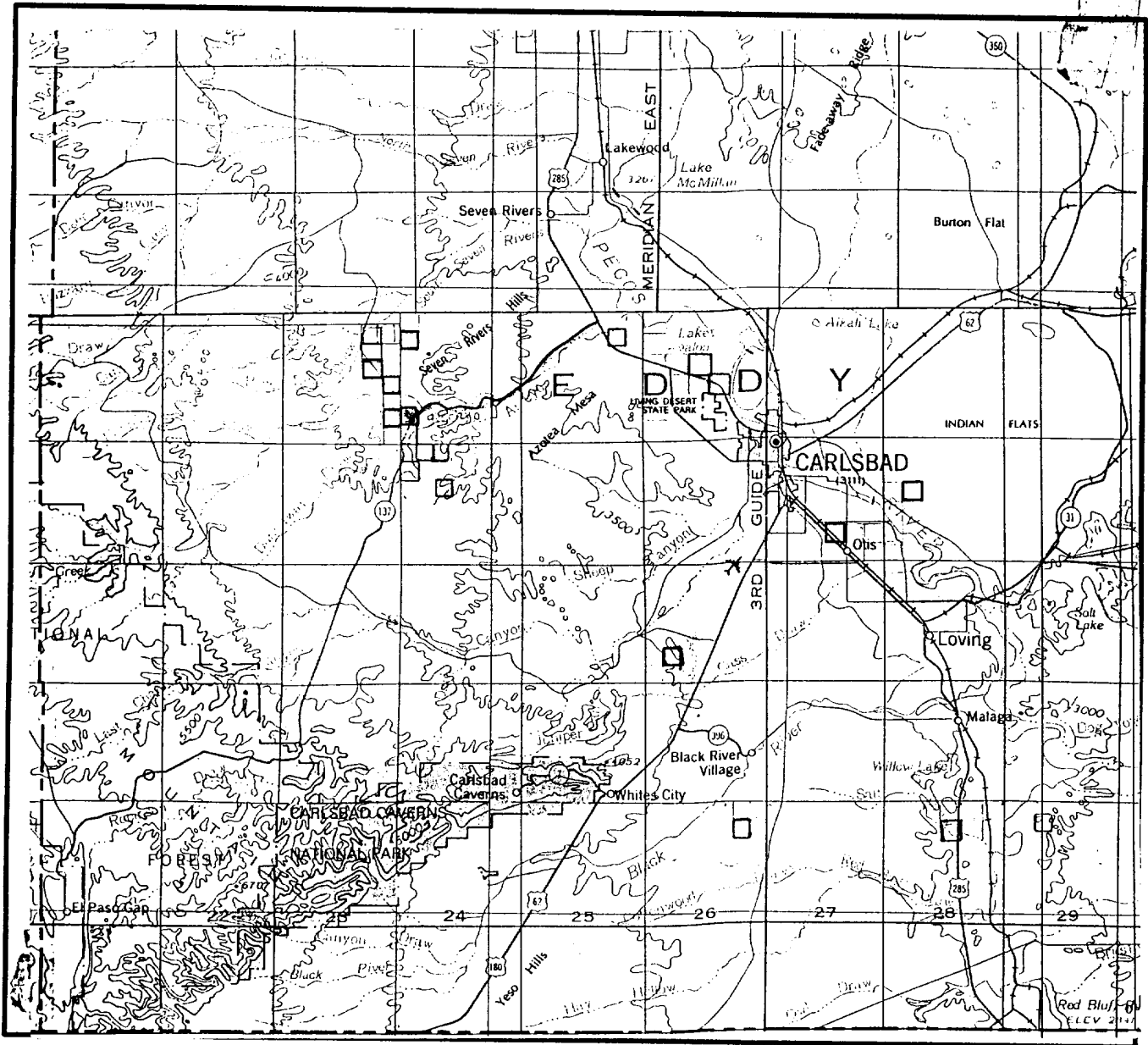
Scale in Feet
1000 0 1000 2000 3000 4000

WF

8/98

Map updated to 8/98

VICINITY MAP



SECTION 31 TWP 21-S RGE 24-E
 SURVEY NEW MEXICO PRINCIPAL MERIDIAN
 COUNTY EDDY STATE NM
 DESCRIPTION 1535' FNL & 660' FWL

OPERATOR DEVON ENERGY CORPORATION (NEVADA)
 LEASE WINSTON GAS CO. #4 SWD

DISTANCE & DIRECTION FROM TH JCT. OF U.S. HWY. 285
& STATE HWY. 137, ±12 MILES NORTHWEST OF CARLSBAD,
GO SOUTHWEST 11.7 MILES ON STATE HWY. 137, THENCE
NORTH 0.3 MILE ON LEASE ROAD, THENCE WEST 0.3 MILE
ON PIPELINE ROAD TO A POINT ±110' NORTH OF THE
LOCATION.

This location has been very carefully staked on the ground according to the best official survey records, maps, and other data available to us.
 Review this plot and notify us immediately of any possible discrepancy.

TOPOGRAPHIC LAND SURVEYORS

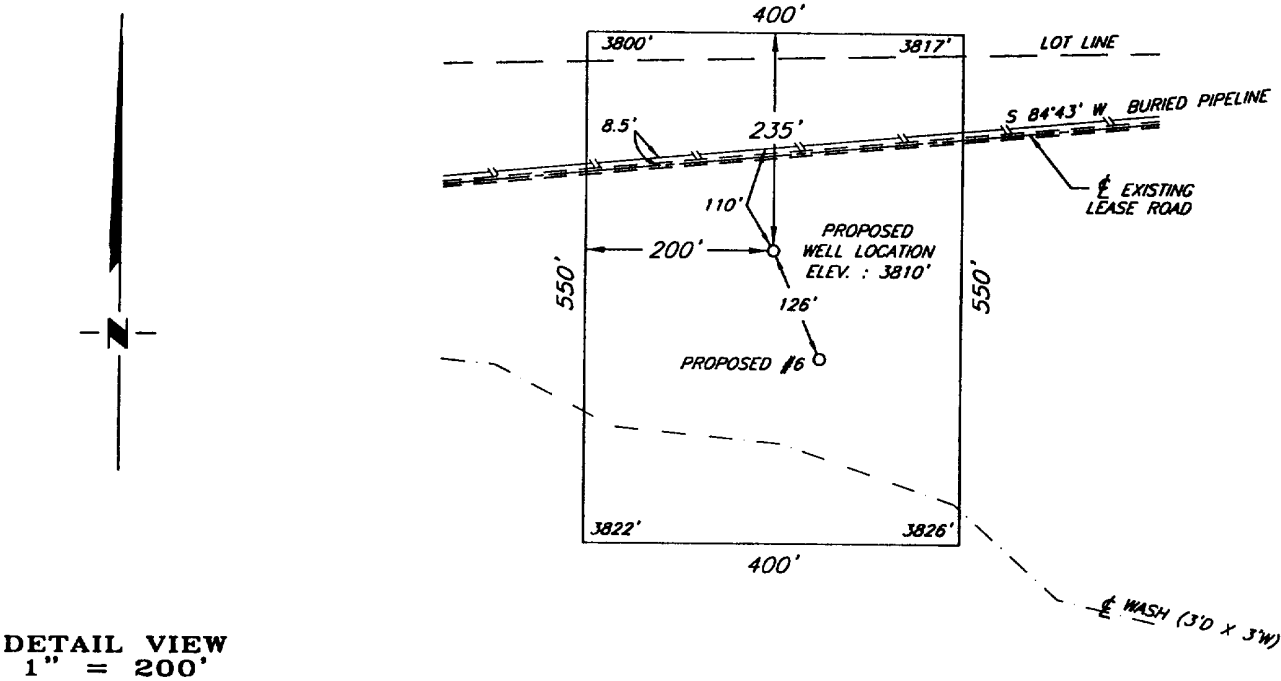
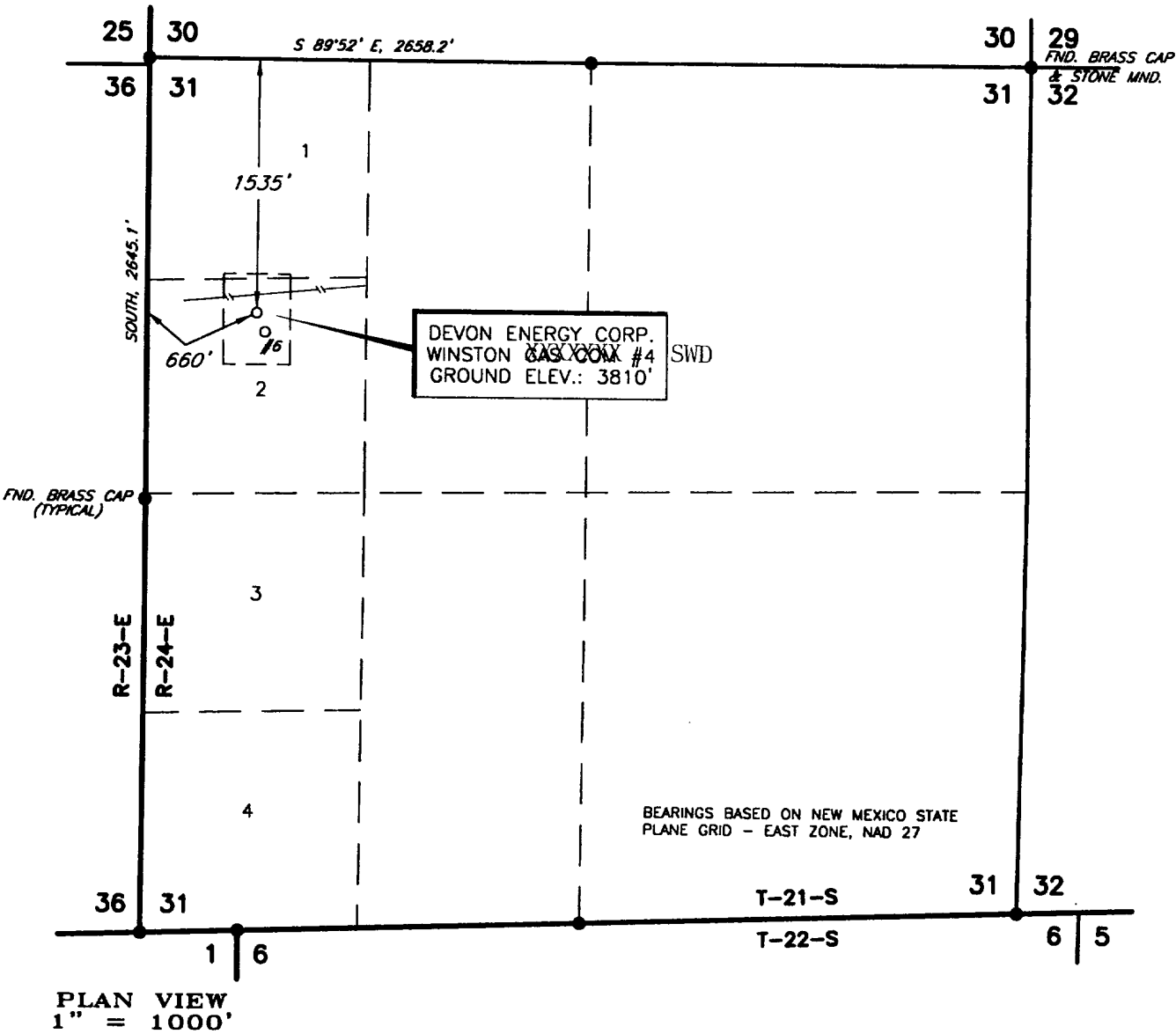
Surveying & Mapping for the Oil & Gas Industry

1307 N. HOBART
 PAMPA, TX. 79065
 (800) 658-6382

6709 N. CLASSEN BLVD.
 OKLAHOMA CITY, OK. 73116
 (800) 654-3219

2903 N. BIG SPRING
 MIDLAND, TX. 79705
 (800) 767-1653

PLAT SHOWING PROPOSED
WELL LOCATION AND LEASE ROAD IN
SECTION 31, T-21-S, R-24-E, N.M.P.M.
EDDY COUNTY, NEW MEXICO



				DEVON ENERGY CORPORATION	SCALE:	AS SHOWN
					DATE:	JULY 20, 1998
NO.	REVISION	DATE	BY	SURVEYING AND MAPPING BY TOPOGRAPHIC LAND SURVEYORS MIDLAND, TEXAS	JOB NO.:	59523-F
SURVEYED BY: B.R.B.					51 NE	
DRAWN BY: V.H.B.						
APPROVED BY: R.M.R.						SHEET :