

District I  
PO Box 1980, Hobbs, NM 88241-1980

District II  
811 South First, Artesia, NM 88210

District III  
1000 Rio Brazos Rd., Aztec, NM 87410

District IV  
2040 South Pacheco, Santa Fe, NM 87505

State of New Mexico  
Energy, Minerals & Natural Resources Department

OIL CONSERVATION DIVISION  
2040 South Pacheco  
Santa Fe, NM 87505

Form C-101  
Revised October 18, 1994

Instructions on back  
Submit to Appropriate District Office  
State Lease - 6 Copies  
Fee Lease - 5 Copies

☐ AMENDED REPORT

APPLICATION FOR PERMIT TO DRILL, RE-ENTER, DEEPEN, PLUGBACK, OR ADD A ZONE

Operator Name and Address Mewbourne Oil Company PO Box 5270, Hobbs, New Mexico 88240 (505)3935905		OGRID Number 14744
Property Name Avalon Hills "36" State		API Number 30-01S-30390
Property Code 23648	Well No. #1	

Surface Location

UL or lot no.	Section	Township	Range	Lot Idn	Feet from the	North/South line	Feet from the	East/West Line	County
O	36	20S	27E		660	South	1980	East	Eddy

Proposed Bottom Hole Location If Different From Surface

UL or lot no.	Section	Township	Range	Lot Idn	Feet from the	North/South line	Feet from the	East/West Line	County
Proposed Pool 1					Proposed Pool 2				
Avalon Morrow					Burton Flats, Morrow				

Work Type Code N	Well Type Code G	Cable/Rotary R	Lease Type Code S	Ground Level Elevation 3235'
Multiple No	Proposed Depth 11300	Formation Morrow	Contractor Unknown	Spud Date Upon Approval

Proposed Casing and Cement Program

Hole Size	Casing Size	Casing weight/foot	Setting Depth	Sacks of Cement	Estimated TOC
17 1/2"	13 3/8"	48#	400	420	Circulate to Surface
12 1/4"	8 5/8"	32#	2700	800	<del>Circulate to Surface</del>
7 7/8"	5 1/2"	17#	11300	900	600' Above Wolfca
18 Hours WOC on 13 3/8" - 8 5/8" casing					Post TD-1
					9-4-98

Describe the proposed program. If this application is to DEEPEN or PLUG BACK give the data on the present productive zone and proposed new productive zone. Describe the blowout prevention program, if any. Use additional sheets if necessary.

BOP Program: Shcaffer LWS or equivalent (Duoble-Ram Hydraulic) 900 series with Hydriil 900 series from Intermediate casing to total depth. Rotating head, PVT system, flow monitors, and mud gas separator from the top of the wolfcamp to TD.

Mud Program: 0 - 400' Fresh water and spud mud, LCM as needed  
400' to 2700' Fresh water, lime for pH, and LCM as needed  
2700' to 9500' Cut brine, lime for pH, and LCM as needed  
9500' to 11,300' Cut brine, Cuastic for pH, Prehydrated gel, Starch for WL Control, and LCM as needed  
mud weight will run 9.5# to 10# per gal.

Notify N.M.O.C.C. in sufficient  
time to witness cementing  
the 8 5/8" casing

I hereby certify that the information given above is true and complete to the best of my knowledge and belief.

Signature:

Printed name: Steve Matthews

Title: Drilling Superintendent

OIL CONSERVATION DIVISION

Approved By:

ORIGINAL SIGNED BY TIM W. GUM  
DISTRICT II SUPERVISOR

Title:

Approval Date:

9-2-98

Expiration Date:

9-2-99

SECRET

100-443887-100

1944

DISTRICT I  
P.O. Box 1980, Hobbs, NM 88241-1980

State of New Mexico

Energy, Minerals and Natural Resources Department

Form C-102  
Revised February 10, 1994  
Submit to Appropriate District Office  
State Lease - 4 Copies  
Fee Lease - 3 Copies

DISTRICT II  
P.O. Drawer DD, Artesia, NM 88211-0719

DISTRICT III  
1000 Rio Brazos Rd., Aztec, NM 87410

DISTRICT IV  
P.O. BOX 2088, SANTA FE, N.M. 87504-2088

OIL CONSERVATION DIVISION

P.O. Box 2088

Santa Fe, New Mexico 87504-2088

☐ AMENDED REPORT

WELL LOCATION AND ACREAGE DEDICATION PLAT

API Number	Pool Code	Pool Name <i>Avalon Morrow</i>
Property Code	Property Name AVALON "36" STATE	Well Number 1
OGRID No. <i>14744</i>	Operator Name MEWBOURNE OIL COMPANY	Elevation 3235'

Surface Location

UL or lot No. 0	Section 36	Township 20 S	Range 27 E	Lot Idn	Feet from the 660	North/South line SOUTH	Feet from the 1980	East/West line EAST	County EDDY
--------------------	---------------	------------------	---------------	---------	----------------------	---------------------------	-----------------------	------------------------	----------------

Bottom Hole Location If Different From Surface

UL or lot No.	Section	Township	Range	Lot Idn	Feet from the	North/South line	Feet from the	East/West line	County
Dedicated Acres	Joint or Infill	Consolidation Code	Order No.						

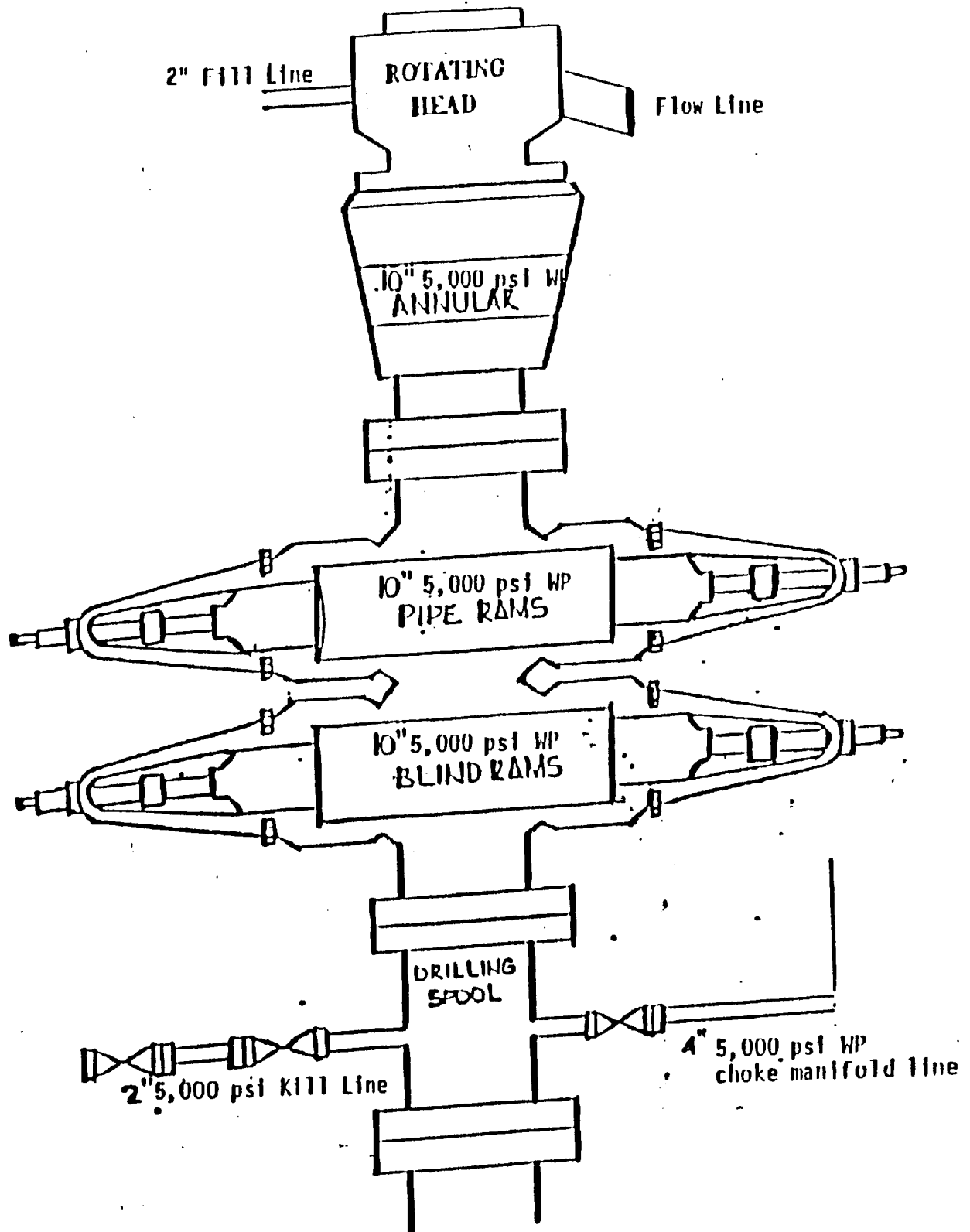
NO ALLOWABLE WILL BE ASSIGNED TO THIS COMPLETION UNTIL ALL INTERESTS HAVE BEEN CONSOLIDATED  
OR A NON-STANDARD UNIT HAS BEEN APPROVED BY THE DIVISION

				OPERATOR CERTIFICATION	
				I hereby certify the the information contained herein is true and complete to the best of my knowledge and belief.	
				<i>Steve Matthews</i> Signature	
				Steve Matthews Printed Name	
				Drilling Superintendent Title	
				09-01-98 Date	
				SURVEYOR CERTIFICATION	
				I hereby certify that the well location shown on this plat was plotted from field notes of actual surveys made by me or under my supervision, and that the same is true and correct to the best of my belief.	
				AUGUST 27, 1998	
				Date Surveyed	
				Signature & Seal of Professional Surveyor	
				<i>Gary Edson</i> 8/31/98 98-11-1188	
				Certificate No. RONALD J. EDSON 3239 GARY EDSON 12641	

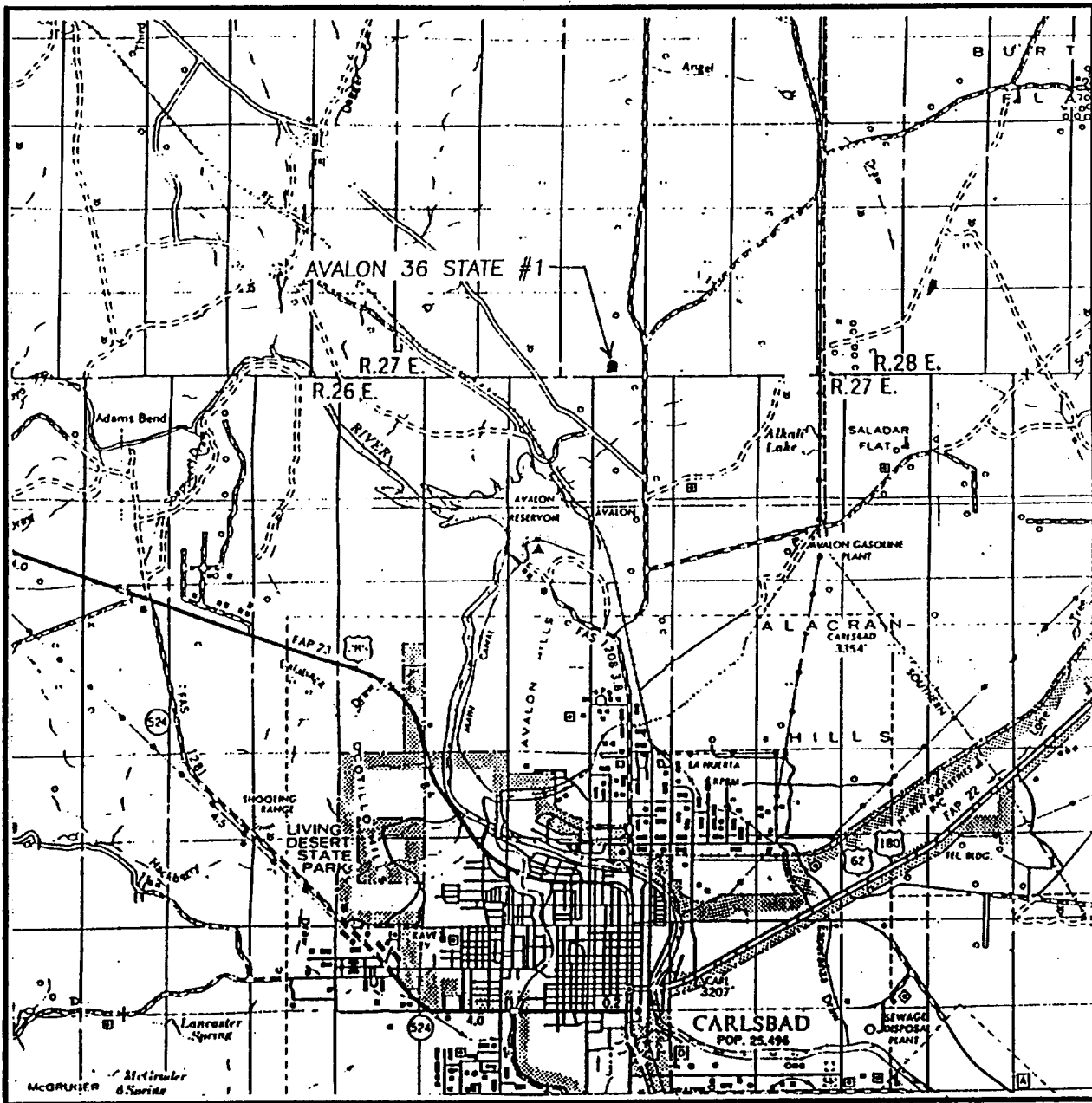
1980'

660'

BOP SCHEMATIC  
PRODUCTION HOLE



# VICINITY MAP



SCALE: 1" = 2 MILES

SEC. 36 TWP. 20-S RGE. 27-E

SURVEY N.M.P.M.

COUNTY EDDY

DESCRIPTION 660' FSL & 1980' FEL

ELEVATION 3235'

OPERATOR MEWBOURNE OIL COMPANY

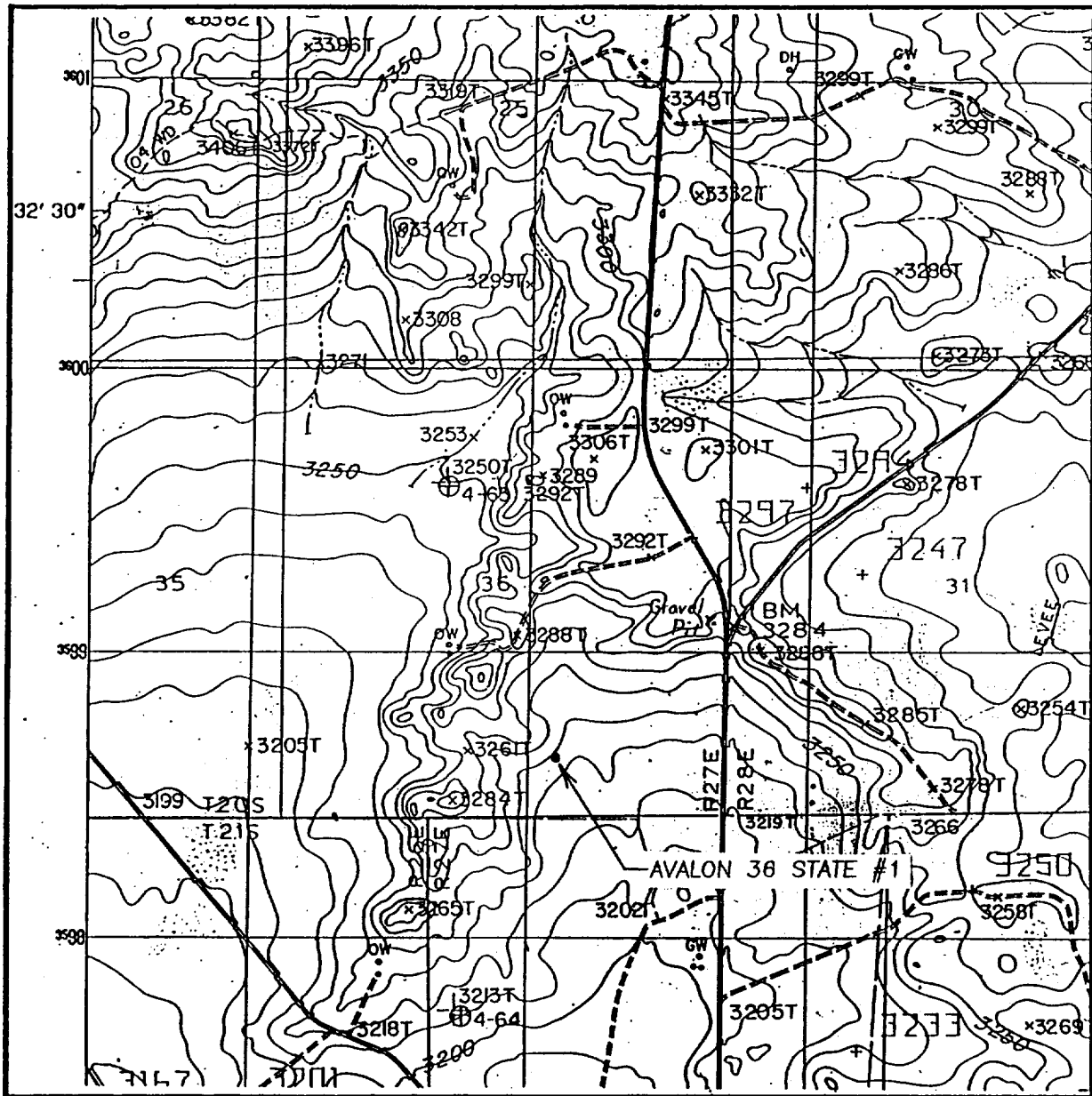
LEASE AVALON 36 STATE

U.S.G.S. TOPOGRAPHIC MAP

ANGEL DRAW, NM

**JOHN WEST ENGINEERING**  
**HOBBS, NEW MEXICO**  
**(505) 393-3117**

# LOCATION VERIFICATION MAP



SCALE: 1" = 2000'

CONTOUR INTERVAL - 10'  
SUPPLEMENTAL - 5'

SEC. 36 TWP. 20-S RGE. 27-E

SURVEY N.M.P.M.

COUNTY EDDY

DESCRIPTION 660' FSL & 1980' FEL

ELEVATION 3235'

OPERATOR MEWBOURNE OIL COMPANY

LEASE AVALON<sup>N 13</sup> 36 STATE

U.S.G.S. TOPOGRAPHIC MAP

ANGEL DRAW, NM

**JOHN WEST ENGINEERING  
HOBBS, NEW MEXICO**

**(505) 393-3117**