

District I
PO Box 1980, Hobbs, NM 88241-1980

District II
PO Drawer DD, Artesia, NM 88211-0719

District III
1000 Rio Brazos Rd., Aztec, NM 87410

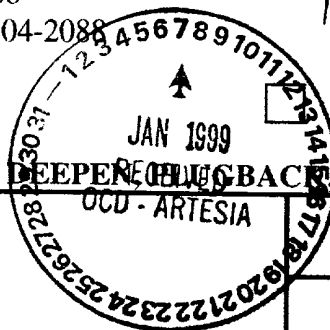
District IV
PO Box 2088, Santa Fe, NM 87504-2088

State of New Mexico
Energy, Minerals & Natural Resources Department

OIL CONSERVATION DIVISION
PO Box 2088
Santa Fe, NM 87504-2088

Form C-101
Revised February 10, 1994
Instructions on back
Submit to Appropriate District Office
State Lease - 6 Copies
Fee Lease - 5 Copies

AMENDED REPORT



APPLICATION FOR PERMIT TO DRILL, RE-ENTER, DEEPEN, PLUG BACK, OR ADD A ZONE

² Operator Name and Address. Devon Energy Corporation (Nevada) 1500 Mid America Tower 20 N. Broadway Oklahoma City, OK 73102-8260		¹ OGRID Number 6137
⁴ Property Code 24253		³ API Number 30-015-30581
⁵ Property Name CARLSBAD "22H" STATE COM.		⁶ Well No. 2

⁷ Surface Location

UL or lot no. H	Section 22	Township 21S	Range 26E	Lot Ids	Feet from the 1350	North/South line NORTH	Feet from the 660	East/West line EAST	County EDDY
--------------------	---------------	-----------------	--------------	---------	-----------------------	---------------------------	----------------------	------------------------	----------------

⁸ Proposed Bottom Hole Location If Different From Surface

UL or lot no.	Section	Township	Range	Lot Ids	Feet from the	North/South line	Feet from the	East/West line	County
⁹ Proposed Pool 1 AVALON (MORROW)					¹⁰ Proposed Pool 2				

¹¹ Work Type Code N	¹² Well Type Code G	¹³ Cable/Rotary R	¹⁴ Lease Type Code S	¹⁵ Ground Level Elevation 3143'
¹⁶ Multiple No	¹⁷ Proposed Depth 11,300'	¹⁸ Formation MORROW	¹⁹ Contractor unknown at this time	²⁰ Spud Date JANUARY, 1999

Minimum WOC time / 8 hrs. ²¹ Proposed Casing and Cement Program

Hole Size	Casing Size	Casing weight/foot	Setting Depth	Sacks of Cement	Estimated TOC
17 1/2"	13 3/8"	48	425'	470	surface
12 1/4"	8 5/8"	32	2,200'	900	surface
7 7/8 "	5 1/2"	15.5 & 17	11,300'	2000	6,500'

²² Describe the proposed program. If this application is to DEEPEN or PLUG BACK give the data on the present productive zone and proposed new productive zone. Describe the blowout prevention program, if any. Use additional sheets if necessary.

Devon Energy Corporation (Nevada) plans to drill this well to a total depth of 11,300 feet and complete it as a Morrow gas development well. If it is deemed non-commercial then it will be plugged and abandoned in accordance with the rules and regulations established by the New Mexico OCD or converted to salt water disposal after installing casing and obtaining the necessary disposal permits. Blowout prevention equipment will be installed while drilling the intermediate and production holes.

NSL- 4218

APPRV. 2-22-99

²³ I hereby certify that the information given above is true and complete to the best of my knowledge and belief.		OIL CONSERVATION DIVISION	
Signature: Candace R. Graham		Approved by: ORIGINAL SIGNED BY TIM W. GUM	
Printed name Candace R. Graham		Title: DISTRICT II SUPERVISOR	
Title: Engineer Technician		Approval Date: 2-23-99	
Date: December 29, 1998		Expiration Date: 2-23-00	
Phone: (405) 235-3611 X4520		Conditions of Approval: Notify N.M.O.C.C. in sufficient time to witness cementing the 8 5/8" casing	
Attached <input type="checkbox"/>			

* Oper to follow City of Carlsbad Permit Approval

DISTRICT I
P. O. Box 1980
Hobbs, NM 88241-1980

State of New Mexico
Department of Energy, Minerals, and Natural Resources

Form C-102
Revised 02-10-94
Instructions on back

DISTRICT II
P. O. Drawer DD
Artesia, NM 88211-0719

OIL CONSERVATION DIVISION
P. O. Box 2088
Santa Fe, New Mexico 87504-2088

Submit to the Appropriate
District Office
State Lease - 4 copies
Fee Lease - 3 copies

☐ AMENDED REPORT

DISTRICT III
1000 Rio Brazos Rd.
Aztec, NM 87410

DISTRICT IV
P. O. Box 2088
Santa Fe, NM 87507-2088

WELL LOCATION AND ACREAGE DEDICATION PLAT

1 API Number		2 Pool Code		3 Pool Name AVALON (MORROW)		
4 Property Code		5 Property Name CARLSBAD '22' H STATE COM			6 Well Number 2	
7 OGRID No. 6137		8 Operator Name DEVON ENERGY CORPORATION (NEVADA)			9 Elevation 3143'	

10 SURFACE LOCATION

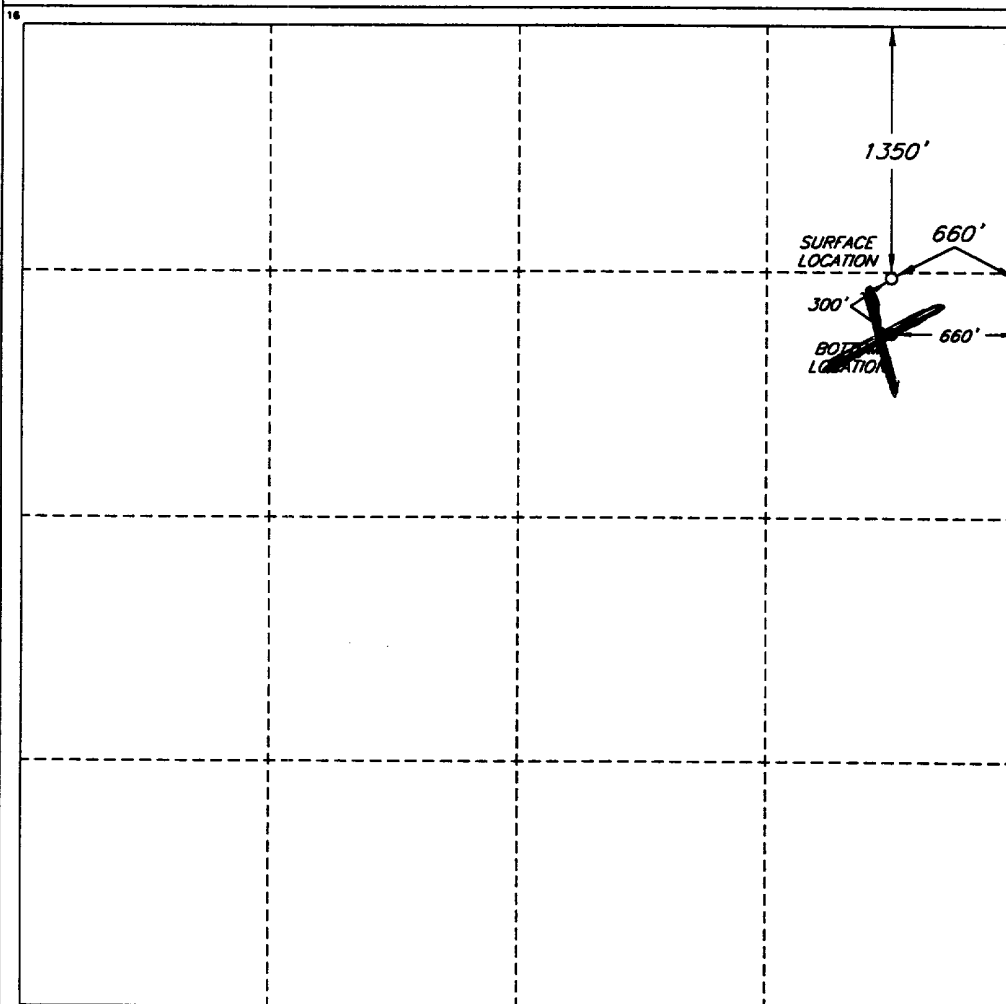
UL or lot no.	Section	Township	Range	Lot Ida	Feet from the	North/South line	Feet from the	East/West line	County
H	22	21 SOUTH	26 EAST, N.M.P.M.		1350'	NORTH	660'	EAST	EDDY

Is the same as BOTTOM HOLE LOCATION IF DIFFERENT FROM SURFACE as the STL

UL or lot no.	Section	Township	Range	Lot Ida	Feet from the	North/South line	Feet from the	East/West line	County
H	22	21 SOUTH	26 EAST, N.M.P.M.		1050'	NORTH	000'	EAST	EDDY

12 Dedicated Acres 320	13 Joint or Infill	14 Consolidation Code	15 Order No.
---------------------------	--------------------	-----------------------	--------------

NO ALLOWABLE WELL BE ASSIGNED TO THIS COMPLETION UNTIL ALL INTERESTS HAVE BEEN CONSOLIDATED OR A NON-STANDARD UNIT HAS BEEN APPROVED BY THE DIVISION



OPERATOR CERTIFICATION

I hereby certify that the information contained herein is true and complete to the best of my knowledge and belief.

Signature
Candace R. Graham

Printed Name
Candace R. Graham

Title
Engineering Tech.

Date
December 29, 1998

SURVEYOR CERTIFICATION

I hereby certify that the well location shown on this plat was plotted from field notes of actual surveys made by me or under my supervision, and that the same is true and correct to the best of my belief.

Date of Survey

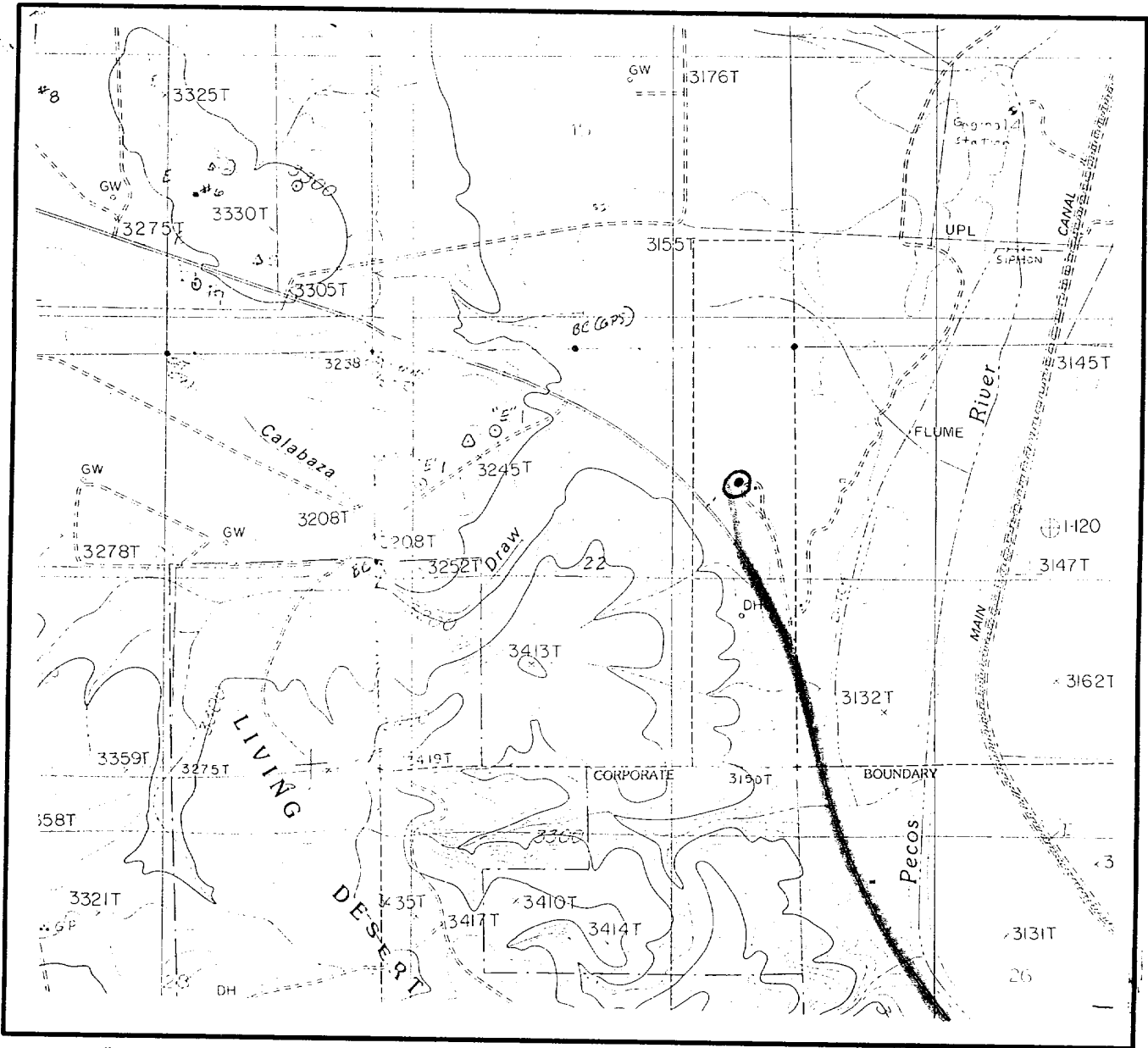
Signature of Registered Professional Surveyor

12128

Certificate
ROGER M. ROBBINS P.S. #12128

JOB #57840 / 50 NE / V.H.B.

LOCATION & ELEVATION VERIFICATION MAP



SCALE : 1" = 2000' CONTOUR INTERVAL 20'

SECTION 22 TWP 21-S RGE 26-E
SURVEY NEW MEXICO PRINCIPAL MERIDIAN
COUNTY EDDY STATE NM
DESCRIPTION 1350' FNL & 660' FEL
ELEVATION 3143'

OPERATOR DEVON ENERGY CORPORATION
LEASE CARLSBAD "22" H STATE COM #2

U.S.G.S. TOPOGRAPHIC MAP
CARLSBAD WEST, NEW MEXICO

BOTTOM LOCATION: LAT. N 32°28'05.7"
LONG. W 104°16'24.5"



This location has been very carefully staked on the ground according to the best official survey records, maps, and other data available to us.
Review this plat and notify us immediately of any possible discrepancy.

TOPOGRAPHIC LAND SURVEYORS

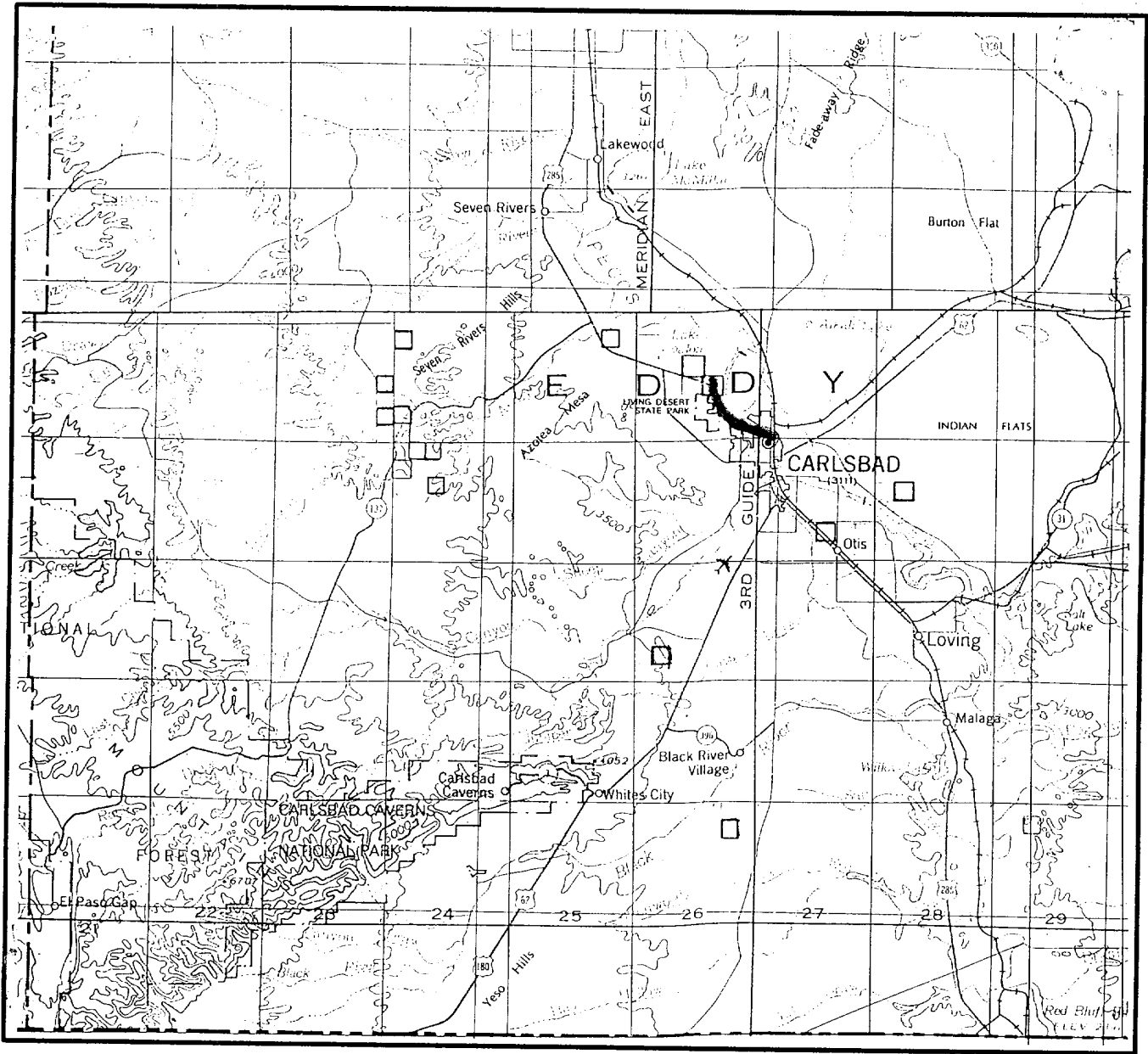
Surveying & Mapping for the Oil & Gas Industry

1307 N. HOBART
PAMPA, TX. 79065
(800) 658-6382

6709 N. CLASSEN BLVD.
OKLAHOMA CITY, OK. 73116
(800) 654-3219

2903 N. BIG SPRING
MIDLAND, TX. 79705
(800) 767-1653

VICINITY MAP



SECTION 22 TWP 21-S RGE 26-E
SURVEY NEW MEXICO PRINCIPAL MERIDIAN
COUNTY EDDY STATE NM
DESCRIPTION 1350' FNL & 660' FEL

OPERATOR DEVON ENERGY CORPORATION
LEASE CARLSBAD "22" H STATE COM #2

DISTANCE & DIRECTION FROM CARLSBAD, GO NORTH-
WEST 3.0 MILES TO CALICHE ROAD, THENCE NORTHERLY
0.2 MILE ON CALICHE ROAD TO A POINT ±200' WEST
OF THE LOCATION.



This location has been very carefully staked on the ground according to the best official survey records, maps, and other data available to us.
Review this plat and notify us immediately of any possible discrepancy.

TOPOGRAPHIC LAND SURVEYORS

Surveying & Mapping for the Oil & Gas Industry

1307 N. HOBART
PAMPA, TX. 79065
(800) 658-6382

6709 N. CLASSEN BLVD.
OKLAHOMA CITY, OK. 73116
(800) 654-3219

2903 N. BIG SPRING
MIDLAND, TX. 79705
(800) 767-1653