

District I
1625 N. French Dr., Hobbs, NM 88240
District II
811 South First, Artesia, NM 88210
District III
1000 Rio Brazos Road, Aztec, NM 87410
District IV
2040 South Pacheco, Santa Fe, NM 87505

State of New Mexico
Energy Minerals and Natural Resources

Oil Conservation Division
2040 South Pacheco
Santa Fe, NM 87505

Form C-101
Revised March 17, 1999

Submit to appropriate District Office
State Lease - 6 Copies
Fee Lease - 5 Copies

AMENDED REPORT

APPLICATION FOR PERMIT TO DRILL, RE-ENTER, DEEPEN, PLUGBACK, OR ADD A ZONE

¹ Operator Name and Address Devon Energy Production Company, L.P. 20 North Broadway, Suite 1500 Oklahoma City, Oklahoma 73102-8260		Wally Frank District Engineer (405) 552-4595	² OGRID Number 6137
³ Property Code 24535-24442	⁵ Property Name CARLSBAD "22H" FEE COM.		⁴ API Number 30-015-30581
			⁶ Well No. 2

⁷ Surface Location

UL or lot no.	Section	Township	Range	Lot Idn	Feet from the	North/South line	Feet from the	East/West line	County
H	22	21S	26E		1350'	NORTH	660'	EAST	EDDY

⁸ Proposed Bottom Hole Location If Different From Surface

UL or lot no.	Section	Township	Range	Lot Idn	Feet from the	North/South line	Feet from the	East/West line	County

⁹ Proposed Pool 1 AVALON (MORROW) 70920	¹⁰ Proposed Pool 2
--	-------------------------------

¹¹ Work Type Code X E	¹² Well Type Code G	¹³ Cable/Rotary R	¹⁴ Lease Type Code S	¹⁵ Ground Level Elevation GL 3143
¹⁶ Multiple No	¹⁷ Proposed Depth 11,300'	¹⁸ Formation MORROW	¹⁹ Contractor Unknown at this time	²⁰ Spud Date OCTOBER, 2000

²¹ Proposed Casing and Cement Program

Hole Size	Casing Size	Casing weight/foot	Setting Depth	Sacks of Cement	Estimated TOC
17 1/2"	Existing 13 3/8"	48# H-40	428'	670	surface
12 1/4"	Existing 8 5/8"	32# K-55	2199'	1135	surface
7 7/8"	Proposed 5 1/2"	17# L-80 & 15.5# J-55	11,300'	2000	6500'
Cement to cover all oil, gas & water bearing zones Box					

²² Describe the proposed program. If this application is to DEEPEN or PLUG BACK, give the data on the present productive zone and proposed new productive zone.

Describe the blowout prevention program, if any. Use additional sheets if necessary.

Devon plans to re-enter this D&A well, drill to a total depth of 11,300 feet and complete as a Morrow gas development well. If it is deemed non-commercial then it will be plugged and abandoned in accordance with the rules and regulations established by the New Mexico OCD or converted to salt water disposal after installing production casing and obtaining the necessary disposal permits. Blowout prevention equipment will be installed as necessary while drilling the cement plugs.

²³ I hereby certify that the information given above is true and complete to the best of my knowledge and belief.

Signature: **Candace R. Graham**

Printed name: **Candace R. Graham**

Title: **Engineering Tech.**

Date: **September 8, 2000**

Phone:
(405) 235-3611, X4520

OIL CONSERVATION DIVISION

Approved by: **ORIGINAL SIGNED BY TIM W. [Signature]**
DISTRICT II SUPERVISOR

Title:

Approval Date:

SEP 12 2000

Expiration Date:

SEP 12 2001

Conditions of Approval:

Attached ☐

DISTRICT I
P. O. Box 1980
Hobbs, NM 88241-1980

State of New Mexico
En Minerals, and Natural Resources ment

Form C-102
Revised 02-10-94

Instructions on back

DISTRICT II
P. O. Drawer DD
Artesia, NM 88211-0719

Submit to the Appropriate
District Office
State Lease - 4 copies
Fee Lease - 3 copies

DISTRICT III
1000 Rio Brazos Rd.
Aztec, NM 87410

OIL CONSERVATION DIVISION
P. O. Box 2088
Santa Fe, New Mexico 87504-2088

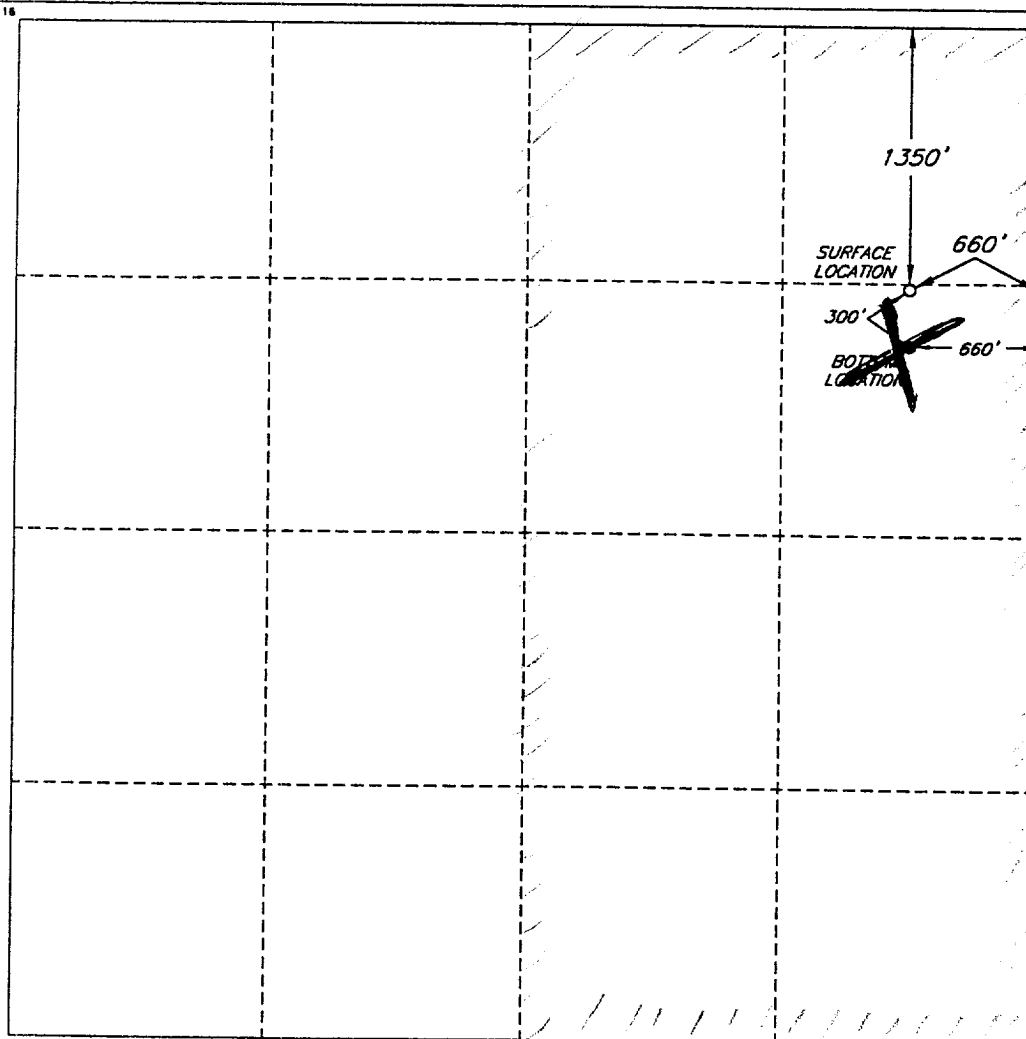
☐ AMENDED REPORT

DISTRICT IV
P. O. Box 2088
Santa Fe, NM 87507-2088

WELL LOCATION AND ACREAGE DEDICATION PLAT

1 API Number		2 Pool Code		3 Pool Name AVALON (MORROW)					
4 Property Code		5 Property Name CARLSBAD '22' H STATE COM						6 Well Number 2	
7 OGRID No. 6137		8 Operator Name DEVON ENERGY CORPORATION (NEVADA)						9 Elevation 3143'	
10 SURFACE LOCATION									
UL or lot no. H	Section 22	Township 21 SOUTH	Range 26 EAST, N.M.P.M.	Lot Ida	Feet from the 1350'	North/South line NORTH	Feet from the 660'	East/West line EAST	County EDDY
Is the same \rightarrow BOTTOM HOLE LOCATION IF DIFFERENT FROM SURFACE \leftarrow as the STL									
UL or lot no. H	Section 22	Township 21 SOUTH	Range 26 EAST, N.M.P.M.	Lot Ida	Feet from the 1050'	North/South line NORTH	Feet from the 660'	East/West line EAST	County EDDY
12 Dedicated Acres 320		13 Joint or Infill		14 Consolidation Code		15 Order No.			

NO ALLOWABLE WELL BE ASSIGNED TO THIS COMPLETION UNTIL ALL INTERESTS HAVE BEEN CONSOLIDATED OR A NON-STANDARD UNIT HAS BEEN APPROVED BY THE DIVISION



OPERATOR CERTIFICATION

I hereby certify that the information contained herein is true and complete to the best of my knowledge and belief.

Signature
Candace R. Graham

Printed Name
Candace R. Graham

Title
Engineering Tech.

Date
December 29, 1998

SURVEYOR CERTIFICATION

I hereby certify that the well location shown on this plat was plotted from field notes of actual surveys made by me or under my supervision, and that the same is true and correct to the best of my belief.

Date of Survey

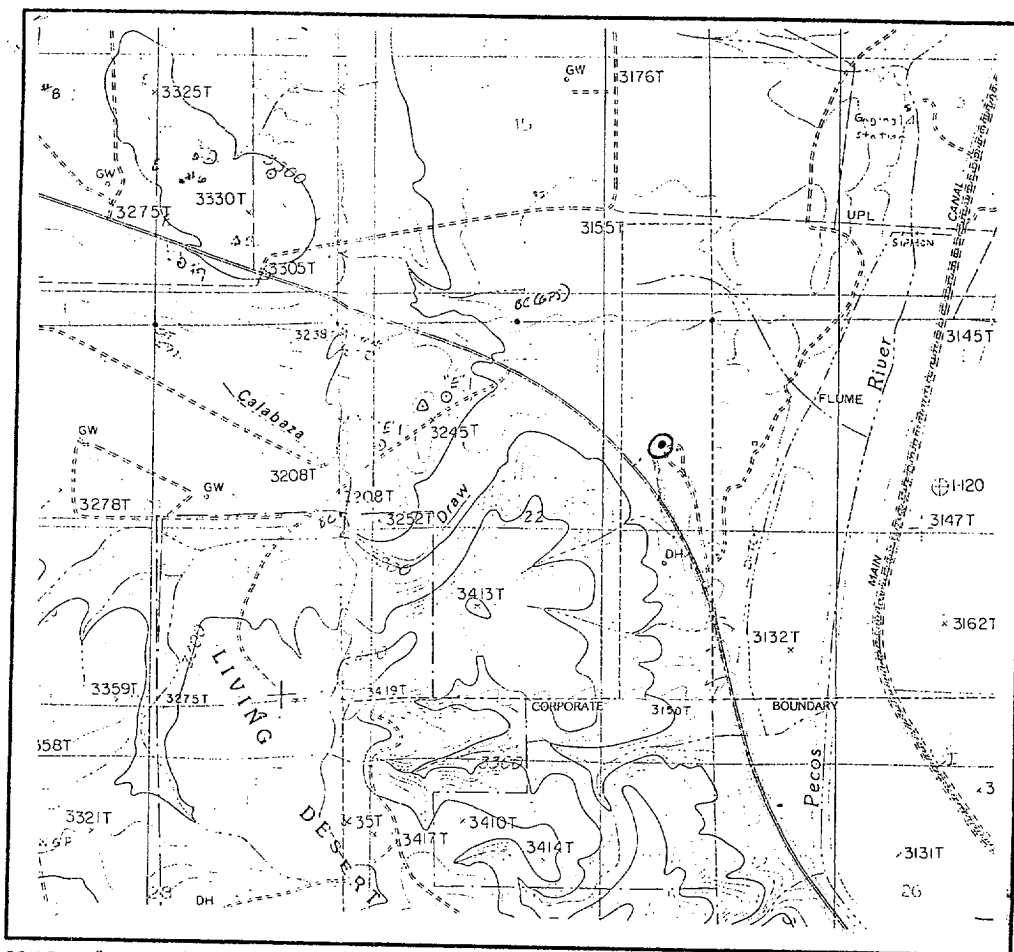
Signature and Seal of Professional Surveyor

REGISTERED PROFESSIONAL SURVEYOR
12123

Certificate
ROGER M. ROBBINS P.S. #12128

JOB #57840 / 50 NE / V.H.B.

LOCATION. & ELEVATION VERIFICATION MAP



SCALE : 1" = 2000'

CONTOUR INTERVAL 20'

SECTION 22 TWP 21-S RGE 26-E

SURVEY _____ NEW MEXICO PRINCIPAL MERIDIAN

COUNTY EDDY STATE NM

DESCRIPTION 1350' FNL & 660' FEL

ELEVATION 3143'

OPERATOR DEVON ENERGY CORPORATION

LEASE CARLSBAD "22" H STATE COM #2

U.S.G.S. TOPOGRAPHIC MAP

CARLSBAD WEST, NEW MEXICO

BOTTOM LOCATION: LAT. _____ N 32°28'05.7"

LONG. _____ W 104°16'24.5"

This location has been very carefully staked on the ground according to the best official survey records, maps, and other data available to us.

Review this plot and notify us immediately of any possible discrepancy.

TOPOGRAPHIC LAND SURVEYORS

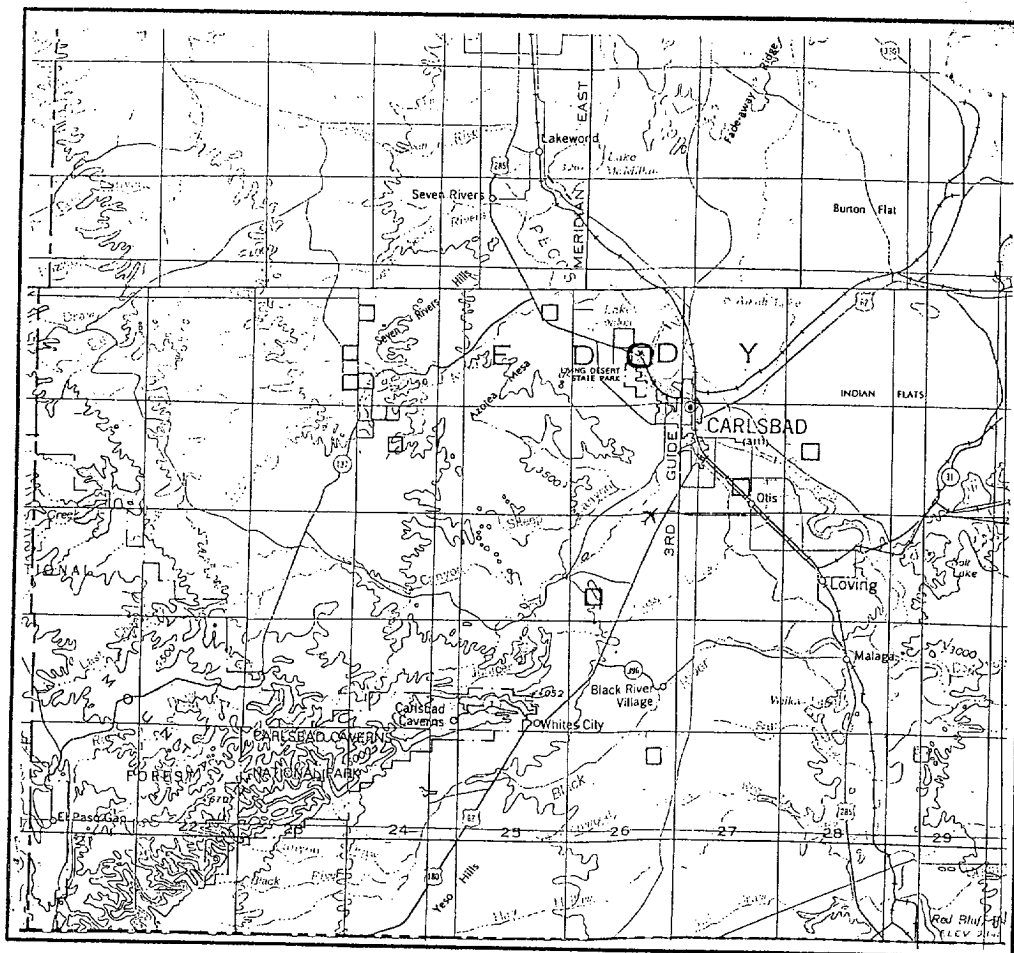
Surveying & Mapping for the Oil & Gas Industry

1307 N. HOBART
PAMPA, TX. 79065
(800) 658-6382

6709 N. CLASSEN BLVD.
OKLAHOMA CITY, OK. 73116
(800) 654-3219

2903 N. BIG SPRING
MIDLAND, TX. 79705
(800) 767-1653

VICINITY MAP



SECTION 22 TWP 21-S RGE 26-E
 SURVEY NEW MEXICO PRINCIPAL MERIDIAN
 COUNTY EDDY STATE NM
 DESCRIPTION 1350' FNL & 660' FEL

OPERATOR DEVON ENERGY CORPORATION
 LEASE CARLSBAD "22" H STATE COM #2

DISTANCE & DIRECTION FROM CARLSBAD, GO NORTH-
WEST 3.0 MILES TO CALICHE ROAD, THENCE NORTHERLY
0.2 MILE ON CALICHE ROAD TO A POINT ±200' WEST
OF THE LOCATION.



This location has been very carefully staked on the ground according to the best official survey records, maps, and other data available to us.
 Review this plat and notify us immediately of any possible discrepancy.

TOPOGRAPHIC LAND SURVEYORS

Surveying & Mapping for the Oil & Gas Industry

1307 N. HOBART
 PAMPA, TX. 79065
 (800) 658-6382

6709 N. CLASSEN BLVD.
 OKLAHOMA CITY, OK. 73116
 (800) 654-3219

2903 N. BIG SPRING
 MIDLAND, TX. 79705
 (800) 767-1653