

District I  
PO Box 1980, Hobbs, NM 88241-1980  
District II  
811 S. 1st Street, Artesia, NM 88210-2834  
District III  
1000 Rio Brazos Rd., Aztec, NM 87410  
District IV  
2040 South Pacheco, Santa Fe, NM 87505

OIL CONSERVATION DIVISION  
2040 South Pacheco  
Santa Fe, NM 87505

Instructions on back  
Submit to Appropriate District Office  
State Lease - 6 Copies  
Fee Lease - 45 Copies

☐ AMENDED REPORT

APPLICATION FOR PERMIT TO DRILL, RE-ENTER, DEEPEN, PLUGBACK, OR ADD A ZONE

|   |  |   |
|---|--|---|
| <sup>1</sup> Operator name and Address<br>ORYX ENERGY COMPANY<br>P.O. Box 2880<br>Dallas, TX 75221-2880 |  | <sup>2</sup> OGRID Number<br>016587     |
| <sup>4</sup> Property Code<br>008553 22336  |  | <sup>3</sup> API Number<br>30-015-30621 |
| <sup>5</sup> Property Name<br>CONOCO STATE  |  | <sup>6</sup> Well No.<br>4              |

<sup>7</sup> Surface Location

| UL or lot no. | Section | Township | Range | Lot. Idn | Feet from the | North/South Line | Feet from the | East/West line | County |
|---------------|---------|----------|-------|----------|---------------|------------------|---------------|----------------|--------|
| K             | 2       | 22 S     | 23 E  |          | 1900'         | SOUTH            | 1750'         | WEST           | EDDY   |

<sup>8</sup> Proposed Bottom Hole Location If Different From Surface

| UL or lot no. | Section | Township | Range | Lot. Idn | Feet from the | North/South Line | Feet from the | East/West line | County |
|---------------|---------|----------|-------|----------|---------------|------------------|---------------|----------------|--------|
|               |         |          |       |          |               |                  |               |                |        |

<sup>9</sup> Proposed Pool 1

INDIAN BASIN (UPPER PENN)

<sup>10</sup> Proposed Pool 2

|                                   |                                      |                                       |   |   |
|-----------------------------------|--------------------------------------|---------------------------------------|---|---|
| <sup>11</sup> Work Type Code<br>N | <sup>12</sup> Well Type Code<br>G    | <sup>13</sup> Cable/Rotary<br>ROTARY  | <sup>14</sup> Lease Type Code<br>S          | <sup>15</sup> Ground Level Elevation<br>3995' |
| <sup>16</sup> Multiple<br>NO      | <sup>17</sup> Proposed Depth<br>8200 | <sup>18</sup> Formation<br>UPPER PENN | <sup>19</sup> Contractor<br>NOT YET AWARDED | <sup>20</sup> Spud Date<br>6/1/99             |

<sup>21</sup> Proposed Casing and Cement Program

| Hole Size               | Casing Size | Casing weight/foot | Setting Depth | Sacks of Cement | Estimated TOC       |
|-------------------------|-------------|--------------------|---------------|-----------------|---------------------|
| 18 1/2"                 | 16"         | 84#                | +/- 40'       | GROUTED IN      | SURFACE             |
| 14 3/4"                 | 9 5/8"      | 36#                | 1300'         | 960 SXS         | SURFACE             |
| 8 3/4"                  | 7"          | 23# & 26#          | 8200'         | 545 SXS         | 4600'               |
| Maximum WOC time 8 hrs. |             |                    |               |                 | Post TD-1<br>4-9-99 |

<sup>22</sup> Describe the proposed program. If this application is to DEEPEN or PLUG BACK give the data on the present productive zone and proposed new productive zone. Describe the blowout prevention program, if any. Use additional sheets if necessary

BOP & choke manifold will be 3M systems and will be setup as indicated exhibits. Accumulator volume will be sufficient to provide an open and closing of preventers with 50% reserve. A drill pipe full opening safety valve will be kept on the rif floor in the open position at all times during drilling operations. An upper and lower kelly cock will be used.  
Test Procedure and Drills: Ram type preventers will be tested to 70% of casing burst pressure. Annular preventer will be tested to 1500 psi. Approved closed-in procedure to be posted on the rig floor. Each crew will hold a weekly bop drill.

<sup>23</sup> I hereby certify that the information given above is true and complete to the best of my knowledge and belief.

Signature:

Printed name: EDGAR L. PEREZ

Title: PRORATION ANALYST

OIL CONSERVATION DIVISION

Approved by: ORIGINAL SIGNED BY TIM W. GUM  
DISTRICT II SUPERVISOR

Title:

Approval Date: 4-6-99

Expiration Date: 4-6-00

Notify N.M.U.C.C. in sufficient  
time to witness cementing  
the 9 5/8" casing

DISTRICT I  
P.O. Box 1980, Hobbs, NM 88241-1980

State of New Mexico  
Energy, Minerals and Natural Resources Department

Form C-102  
Revised February 10, 1994  
Submit to Appropriate District Office  
State Lease - 4 Copies  
Fee Lease - 3 Copies

DISTRICT II  
P.O. Drawer DD, Artesia, NM 88211-0719

DISTRICT III  
1000 Rio Brazos Rd., Aztec, NM 87410

DISTRICT IV  
P.O. BOX 2088, SANTA FE, N.M. 87504-2088

OIL CONSERVATION DIVISION

P.O. Box 2088  
Santa Fe, New Mexico 87504-2088

☐ AMENDED REPORT

WELL LOCATION AND ACREAGE DEDICATION PLAT

|                                |                                      |   |
|--------------------------------|--------------------------------------|---|
| API Number                     | Pool Code                            | Pool Name<br><i>INDIAN BASIN (UPPER PENN)</i> |
| Property Code<br><i>008553</i> | Property Name<br>CONOCO STATE        | Well Number<br>4                              |
| OGRID No.<br><i>016587</i>     | Operator Name<br>ORYX ENERGY COMPANY | Elevation<br>3986                             |

Surface Location

| UL or lot No. | Section | Township | Range | Lot Idn | Feet from the | North/South line | Feet from the | East/West line | County |
|---------------|---------|----------|-------|---------|---------------|------------------|---------------|----------------|--------|
| K             | 2       | 22 S     | 23 E  |         | 1900          | SOUTH            | 1750          | WEST           | EDDY   |

Bottom Hole Location If Different From Surface

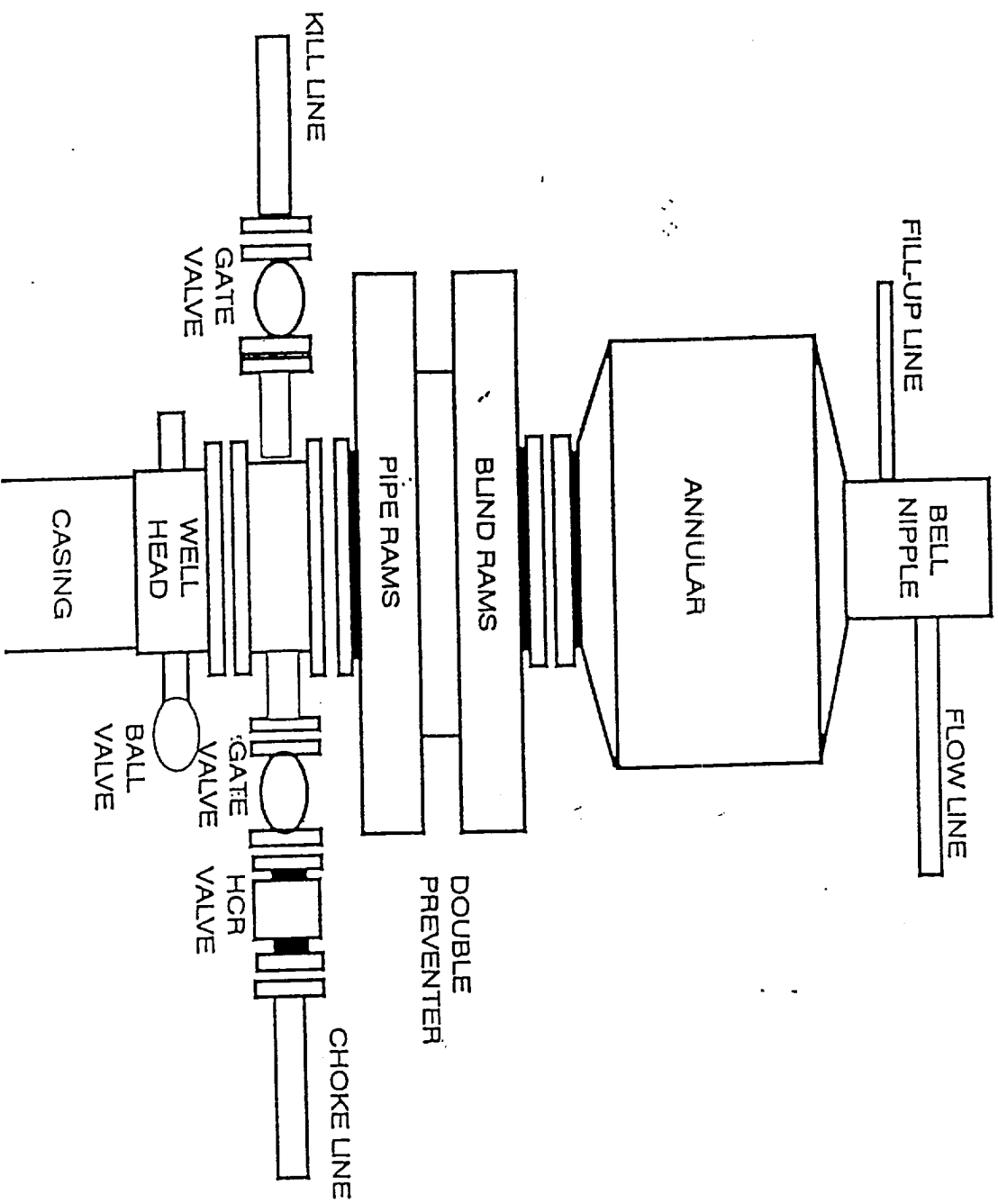
| UL or lot No.                 | Section         | Township           | Range     | Lot Idn | Feet from the | North/South line | Feet from the | East/West line | County |
|-------------------------------|-----------------|--------------------|-----------|---------|---------------|------------------|---------------|----------------|--------|
|                               |                 |                    |           |         |               |                  |               |                |        |
| Dedicated Acres<br><i>640</i> | Joint or Infill | Consolidation Code | Order No. |         |               |                  |               |                |        |

NO ALLOWABLE WILL BE ASSIGNED TO THIS COMPLETION UNTIL ALL INTERESTS HAVE BEEN CONSOLIDATED  
OR A NON-STANDARD UNIT HAS BEEN APPROVED BY THE DIVISION

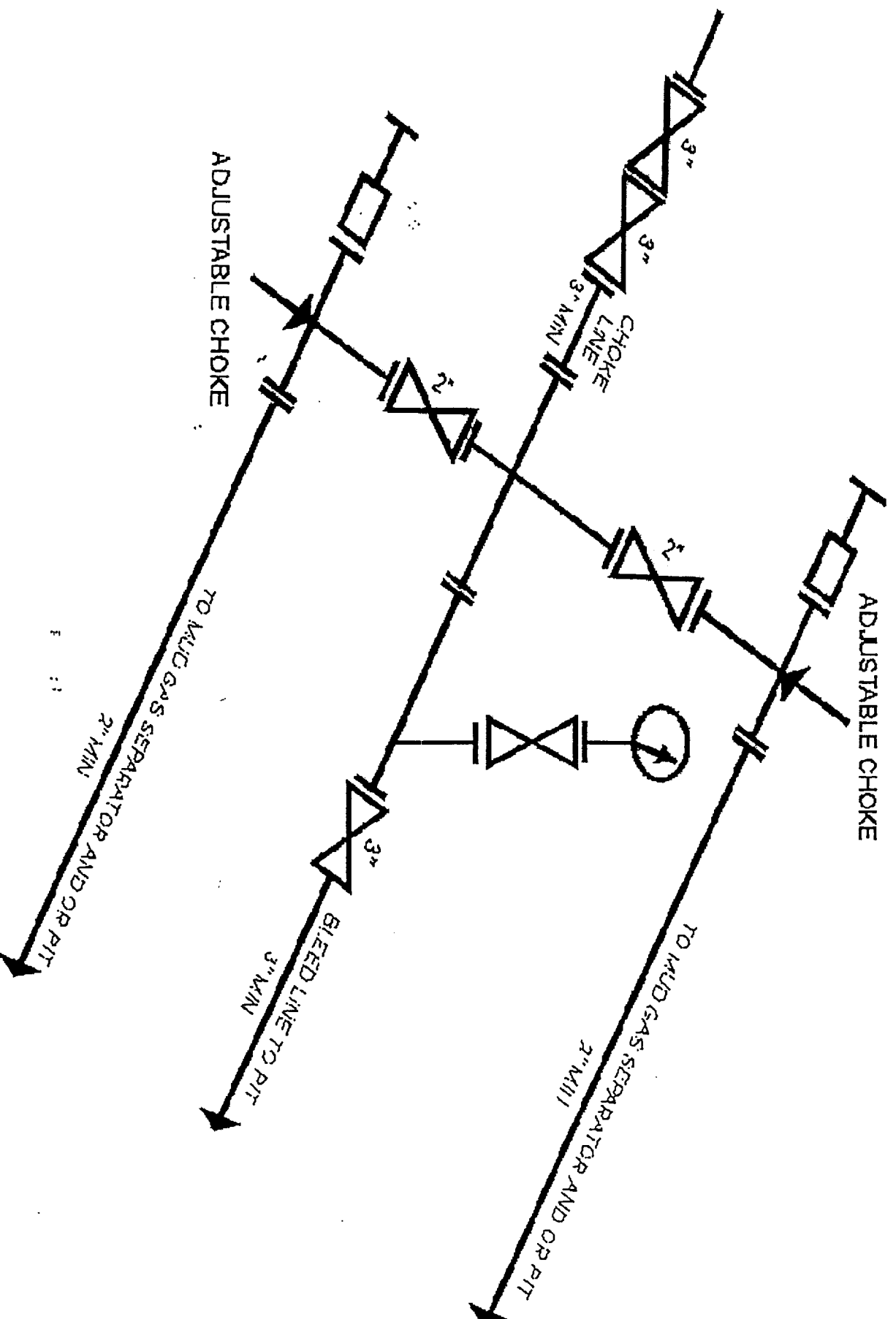
|  |   |
|--|---|
|  | <p>OPERATOR CERTIFICATION</p> <p>I hereby certify the the information contained herein is true and complete to the best of my knowledge and belief.</p> <p><i>Edgar L. Perez</i><br/>Signature</p> <p><i>Edgar L Perez</i><br/>Printed Name</p> <p><i>Provision Analyst</i><br/>Title</p> <p><i>3/18/99</i><br/>Date</p>  |
|  | <p>SURVEYOR CERTIFICATION</p> <p>I hereby certify that the well location shown on this plat was plotted from field notes of actual surveys made by me or under my supervision, and that the same is true and correct to the best of my belief.</p> <p>FEBRUARY 8, 1999</p> <p>Date Surveyed _____ DMCC</p> <p>Signature of Seal of Professional Surveyor<br/><i>Ronald J. Eidson</i><br/>NEW MEXICO<br/>02-12-99<br/>09-11-0063</p> <p>Certificate No. RONALD J. EIDSON 3239<br/>CARR EIDSON 12641<br/>RONALD J. McDONALD 12185</p> |

# ORYX ENERGY COMPANY

BOP STACK FOR A 3,000 PSI WORKING PRESSURE  
FOR SURFACE USE



Attachment I. Diagrams of Choke Manifold Equipment



I-2 3M Choke Manifold Equipment -- Configuration of chokes may vary