

UNITED STATES
DEPARTMENT OF THE INTERIOR
BUREAU OF LAND MANAGEMENT

APPLICATION FOR PERMIT TO DRILL OR DEEPEN

1a. TYPE OF WORK

DRILL ☒

DEEPEN ☐

b. TYPE OF WELL

OIL WELL ☐

GAS WELL ☒

OTHER

SINGLE ZONE ☐

MULTIPLE ZONE ☐

2. NAME OF OPERATOR

Santa Fe Snyder Corp.

3. ADDRESS AND TELEPHONE NO.

550 W. Texas, Suite 1330; Midland, Texas 79701 (915) 682-6373

4. LOCATION OF WELL (Report location clearly and in accordance with any State requirements.)*

At surface

J 1980' FSL & 2310' FEL

At proposed prod. zone

14. DISTANCE IN MILES AND DIRECTION FROM NEAREST TOWN OR POST OFFICE*

17 1/2 miles west of Carlsbad, New Mexico

15. DISTANCE FROM PROPOSED*

LOCATION TO NEAREST
PROPERTY OR LEASE LINE, FT.
(Also to nearest drilg. unit line, if any)

1980'

16. NO. OF ACRES IN LEASE

1280'

17. NO. OF ACRES ASSIGNED
TO THIS WELL

320

18. DISTANCE FROM PROPOSED LOCATION*

TO NEAREST WELL, DRILLING, COMPLETED,
OR APPLIED FOR, ON THIS LEASE, FT.

1650'

19. PROPOSED DEPTH

8400'

20. ROTARY OR CABLE TOOLS

Rotary

21. ELEVATIONS (Show whether DF, RT, GR, etc.)

3809 GR

22. APPROX. DATE WORK WILL START*

November 10, 1999

23.

PROPOSED CASING AND CEMENTING PROGRAM

SIZE OF HOLE	GRADE SIZE OF CASING	WEIGHT PER FOOT	SETTING DEPTH	QUANTITY OF CEMENT
12 1/4"	K-55 9 5/8"	36.0	1200'	575 sx to circulate
8 3/4"	K-55 7"	26.0	8400'	400 sx TOC @ 6000'

We propose to drill to a depth sufficient to test the Cisco/Canyon formation for oil. If productive, 7" casing will be run to TD. If non-productive, the well will be plugged and abandoned in a manner consistent with Federal Regulations. Specific programs as per Onshore Oil and Gas Order No. 1 are outlined in the following attachments:

Drilling Program

- Exhibit A - Operations Plan
- Exhibit B - BOP and Choke Manifold
- Exhibit C - Drilling Fluid Program
- Exhibit D - Auxiliary Equipment
- Exhibit E - Topo Map at Location

- Exhibit F - Map Showing Existing Wells
- Exhibit F (A) - Plat of Location
- Exhibit G - Well Site Layout
- Surface Use and Operations Plan
- H2S Drilling Operations Plan

Santa Fe Snyder Corp. accepts all applicable terms, conditions, stipulations and restrictions concerning operations conducted on the leased land or portion thereof, as described above.

Bond Coverage: Blanket Bond

BLM Bond File No.: UT-0855

IN ABOVE SPACE DESCRIBE PROPOSED PROGRAM: If proposal is to deepen, give data on present productive zone and proposed new productive zone. If proposal is to drill or deepen directionally, give pertinent data on subsurface locations and measured and true vertical depths. Give blowout preventer program, if any.

24.

SIGNED

James P. Phil

TITLE Agent for Santa Fe Snyder Corp.

DATE

10-20-99

(This space for Federal or State office use)

PERMIT NO.

APPROVAL DATE

Application approval does not warrant or certify that the applicant holds legal or equitable title to those rights in the subject lease which would entitle the applicant to conduct operations thereon.
CONDITIONS OF APPROVAL, IF ANY:

Acting

(ORIG. SCD.) ARMANDO A. LOPEZ

Assistant Field Office Manager.
Lands and Minerals

NOV 11 1999

APPROVED BY

TITLE

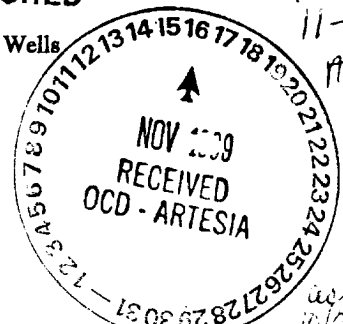
DATE

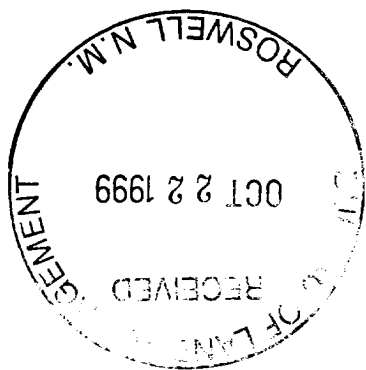
*See Instructions On Reverse Side

APPROVED FOR 1 YEAR

Title 18 U.S.C. Section 1001, makes it a crime for any person knowingly and willfully to make to any department or agency of the United States any false, fictitious or fraudulent statements or representations as to any matter within its jurisdiction.

APPROVAL SUBJECT TO
GENERAL REQUIREMENTS AND
SPECIAL STIPULATIONS
ATTACHED





DISTRICT I
P. O. Box 1980
Hobbs, NM 88241-1980

DISTRICT II
P. O. Drawer DD
Artesia, NM 88211-0719

DISTRICT III
1000 Rio Brazos Rd.
Aztec, NM 87410

DISTRICT IV
P. O. Box 2088
Santa Fe, NM 87507-2088

State of New Mexico
Energy, Minerals, and Natural Resources Department

Form C-102
Revised 02-10-94
Instructions on back

Submit to the Appropriate
District Office
State Lease - 4 copies
Fee Lease - 3 copies

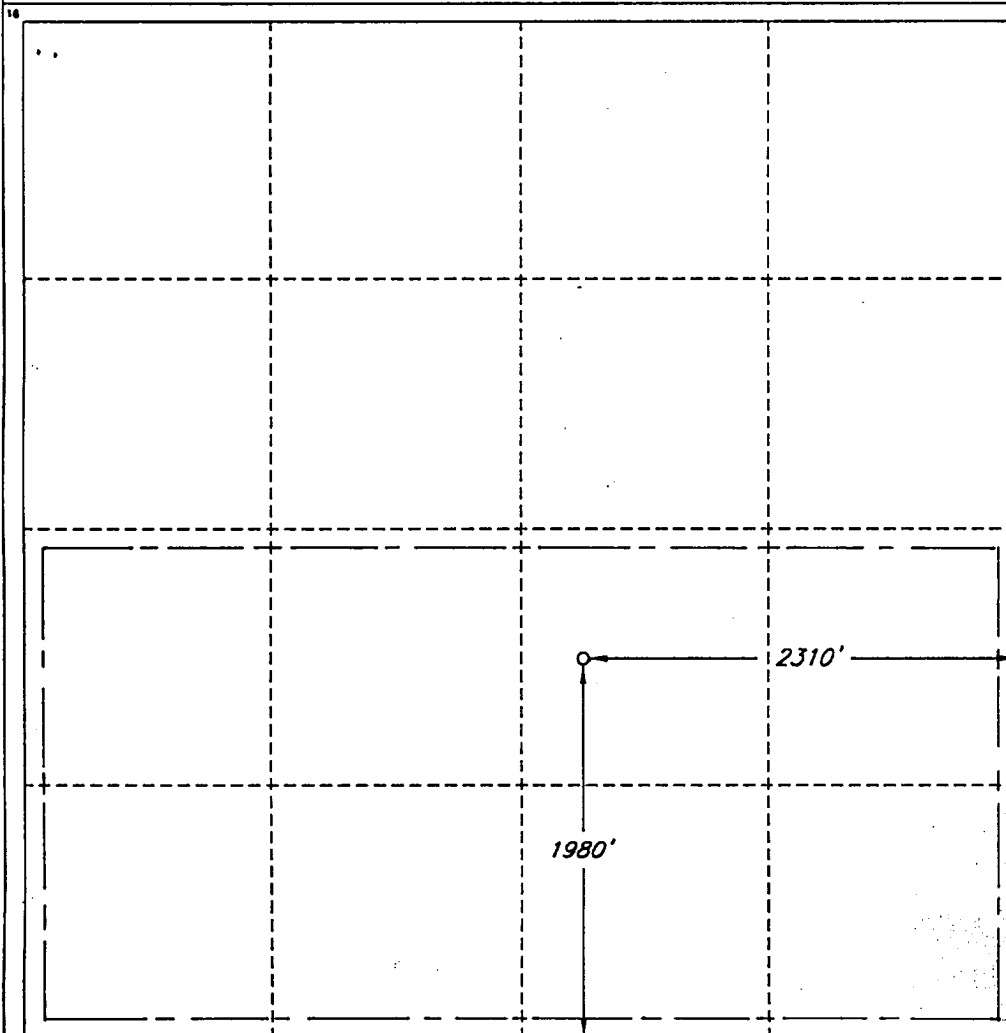
OIL CONSERVATION DIVISION
P. O. Box 2088
Santa Fe, New Mexico 87504-2088

☐ AMENDED REPORT

WELL LOCATION AND ACREAGE DEDICATION PLAT

1 API Number		2 Pool Code		3 Pool Name Dagger Draw South (Upper Penn)					
4 Property Code		5 Property Name ROARING SPRINGS '14' FEDERAL						6 Well Number 7	
7 OGRID No. 20305		8 Operator Name SANTA FE SNYDER CORPORATION						9 Elevation 3809'	
10 SURFACE LOCATION									
UL or lot no. J	Section 14	Township 21 SOUTH	Range 23 EAST, N.M.P.M.	Lot Ida	Feet from the 1980'	North/South line SOUTH	Feet from the 2310'	East/West line EAST	County EDDY
"BOTTOM HOLE LOCATION IF DIFFERENT FROM SURFACE"									
UL or lot no.	Section	Township	Range	Lot Ida	Feet from the	North/South line	Feet from the	East/West line	County
12 Dedicated Acres 320		13 Joint or Infill		14 Consolidation Code		15 Order No.			

NO ALLOWABLE WELL BE ASSIGNED TO THIS COMPLETION UNTIL ALL INTERESTS HAVE BEEN
CONSOLIDATED OR A NON-STANDARD UNIT HAS BEEN APPROVED BY THE DIVISION



OPERATOR CERTIFICATION

I hereby certify that the information
contained herein is true and complete
to the best of my knowledge and belief.

Signature
Michael R. Burton
Printed Name
MICHAEL R. BURTON
Title
Drilling Manager
Date
10/10/99

SURVEYOR CERTIFICATION

I hereby certify that the well
location shown on this plat was
plotted from field notes of actual
surveys made by me or under
my supervision, and that the
same is true and correct to the
best of my belief.

Date of Survey
OCTOBER 10, 1999
Signature and Seal of
Professional Surveyor
V. LYNN
BEZNER
NO. 7920
Certification
V. L. BEZNER P.S. #7920
JOB #65567 / 51 NE / V.H.B.



EXHIBIT B

Santa Fe Snyder Corp.
Roaring Springs "14" Fed Com #7
1980' FSL & 2310' FEL
Section 14, T-21-S, R-23-E
Eddy County, New Mexico

