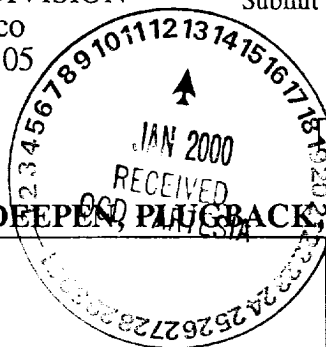


District I
PO Box 1980, Hobbs, NM 88241-1980
District II
811 S. 1st Street, Artesia, NM 88210-2834
District III
1000 Rio Brazos Rd., Aztec, NM 87410
District IV
2040 South Pacheco, Santa Fe, NM 87505

State of New Mexico
Energy, Minerals & Natural Resources Department

OIL CONSERVATION DIVISION
2040 South Pacheco
Santa Fe, NM 87505

Form 7-101
Revised October 18, 1994
Instructions on back
Submit to Appropriate District Office
State Lease - 6 Copies
Fee Lease - 5 Copies



AMENDED REPORT

APPLICATION FOR PERMIT TO DRILL, RE-ENTER, DEEPEN, PLUG BACK, OR ADD A ZONE

¹ Operator name and Address KERR-McGEE OIL & GAS ONSHORE LLC P.O. Box 809004 Dallas, TX 75380-9004		² OGRID Number 012558
⁴ Property Code 000553 24515	⁵ Property Name CONOCO STATE	³ API Number 30-015-30925
		⁶ Well No. 6

⁷ Surface Location

UL or lot no.	Section	Township	Range	Lot. Idn	Feet from the	North/South Line	Feet from the	East/West line	County
G	2	22 S	23 E		2250'	NORTH	1500'	EAST	EDDY

⁸ Proposed Bottom Hole Location If Different From Surface

UL or lot no.	Section	Township	Range	Lot. Idn	Feet from the	North/South Line	Feet from the	East/West line	County

⁹ Proposed Pool 1 99040 INDIAN BASIN (UPPER PENN)	¹⁰ Proposed Pool 2
---	-------------------------------

¹¹ Work Type Code N	¹² Well Type Code G	¹³ Cable/Rotary ROTARY	¹⁴ Lease Type Code S	¹⁵ Ground Level Elevation 3907'
¹⁶ Multiple NO	¹⁷ Proposed Depth 8100'	¹⁸ Formation UPPER PENN	¹⁹ Contractor NOT YET AWARDED	²⁰ Spud Date 01/01/00

Minimum WOC time 8 hrs.

²¹ Proposed Casing and Cement Program

Hole Size	Casing Size	Casing weight/foot	Setting Depth	Sacks of Cement	Estimated TOC
18 1/2"	16"	84#	+/- 40'	GROUTED IN	SURFACE
14 3/4"	9 5/8"	36#	1300'	960 SXS	SURFACE
8 3/4"	7"	23# & 26#	8100'	545 SXS	4600'

²² Describe the proposed program. If this application is to DEEPEN or PLUG BACK give the data on the present productive zone and proposed new productive zone. Describe the blowout prevention program, if any. Use additional sheets if necessary

BOP & choke manifold will be 3M systems. Accumulator volume will be sufficient to provide an open and closing of preventers with 50% reserve. A drill pipe full opening safety valve will be kept on the rig floor in the open position at all times during drilling operations. An upper and lower kelly cock will be used.

Test Procedure and Drills: Ram type preventers will be tested to 70% of casing burst pressure. Annular preventer will be tested to 1500 psi.

ADMINISTRATIVE ORDER NSL - 4386 (SD)

Notify OGD at SPUD & TIME
to witness cementing the
9 5/8" casing.

²³ I hereby certify that the information given above is true and complete to the best of my knowledge and belief.

Signature:

Stephen Fore

Printed name: STEPHEN FORE

972-715-4520

Title: TECHNICAL ANALYST

12-14-99

OIL CONSERVATION DIVISION

Approved by:

ORIGINAL SIGNED BY TIM W. GUM
DISTRICT II SUPERVISOR

Title:

Approval Date: 1-13-00

Expiration Date: 1-13-01

DISTRICT I
P.O. Box 1900, Hobbs, NM 88241-1900

State of New Mexico

Energy, Minerals and Natural Resources Department

Form C-102
Revised February 10, 1994
Submit to Appropriate District Office
State Lease - 4 Copies
Fee Lease - 3 Copies

DISTRICT II
P.O. Drawer DD, Artesia, NM 88211-0719

DISTRICT III
1000 Rio Brazos Rd., Artesia, NM 87410

DISTRICT IV
P.O. Box 2088, Santa Fe, N.M. 87504-2088

OIL CONSERVATION DIVISION

P.O. Box 2088
Santa Fe, New Mexico 87504-2088

☐ AMENDED REPORT

WELL LOCATION AND ACREAGE DEDICATION PLAT

API Number		Pool Code	Pool Name	
Property Code	Property Name CONOCO STATE		Well Number 6	
OGRID No.	Operator Name KERR-MC GEE CORPORATION		Elevation 3907	

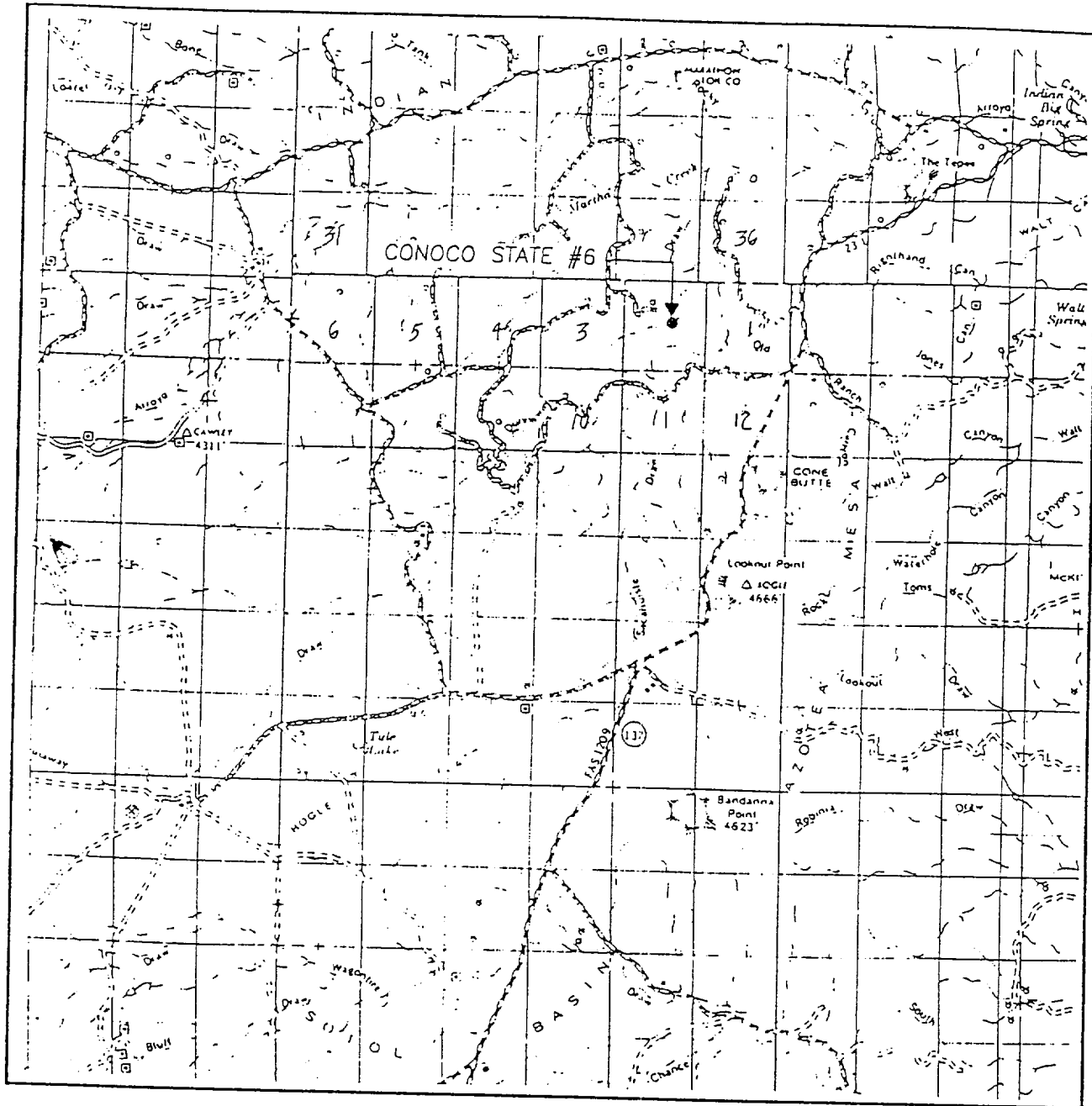
Surface Location									
UL or lot No.	Section	Township	Range	Lot Idn	Feet from the	North/South line	Feet from the	East/West line	County
G	2	22 S	23 E		2250	NORTH	1500	EAST	EDDY

Bottom Hole Location If Different From Surface									
UL or lot No.	Section	Township	Range	Lot Idn	Feet from the	North/South line	Feet from the	East/West line	County
Dedicated Acres 674.28		Joint or Infill	Consolidation Code	Order No.					

NO ALLOWABLE WILL BE ASSIGNED TO THIS COMPLETION UNTIL ALL INTERESTS HAVE BEEN CONSOLIDATED
OR A NON-STANDARD UNIT HAS BEEN APPROVED BY THE DIVISION

	OPERATOR CERTIFICATION I hereby certify that the information contained herein is true and complete to the best of my knowledge and belief. <u>Stephen Fore</u> Signature <u>Stephen Fore</u> Printed Name <u>Technical Analyst</u> Title <u>12-14-99</u> Date
	SURVEYOR CERTIFICATION I hereby certify that the well location shown on this plat was plotted from field notes of actual surveys made by me or under my supervision, and that the same is true and correct to the best of my belief. DECEMBER 6, 1999 Date Surveyed Signature & Seal of Professional Surveyor <u>Ronald J. Edson</u> Professional Surveyor 99-11-1050 Certificate No. RONALD J. EDSON 3239 GARY EDSON 12841 JACON J. DONALD 12185

VICINITY MAP



SCALE: 1" = 2 MILES

SEC. 2 TWP. 22-S RGE. 23-E

SURVEY N.M.P.M.

COUNTY EDDY

DESCRIPTION 2250' FNL & 1500' FEL

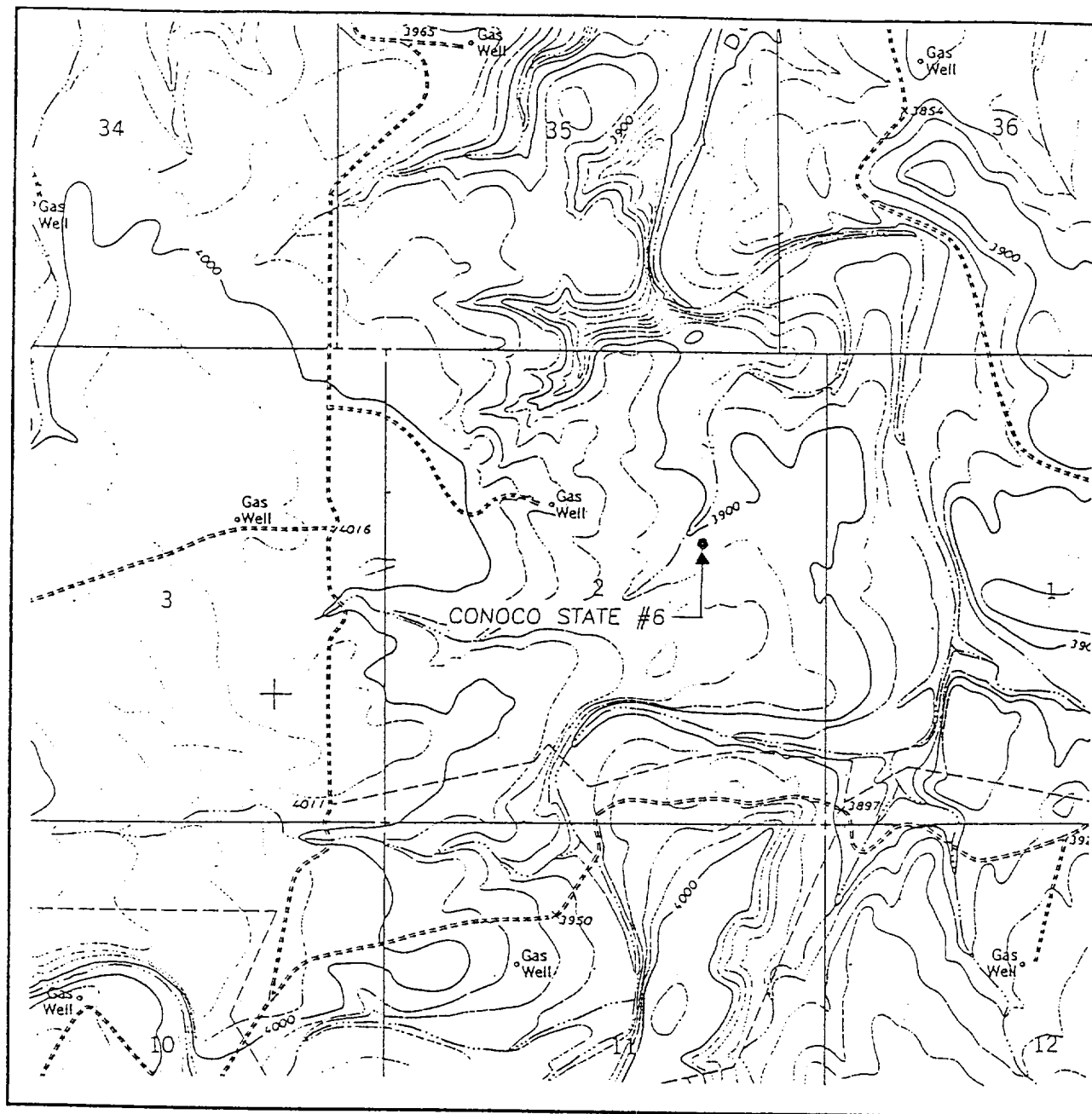
ELEVATION 3907

OPERATOR KERR-MC GEE CORPORATION

LEASE _____ CONOCO STATE

JOHN WEST SURVEYING
HOBBS, NEW MEXICO
(505 393-3117

LOCATION VERIFICATION MAP



SCALE: 1" = 2000'

CONTOUR INTERVAL:
MARTHA CREEK, N.M. - 20'

SEC. 2 TWP. 22-S RGE. 23-E

SURVEY N.M.P.M.

COUNTY EDDY

DESCRIPTION 2250' FNL & 1500' FEL

ELEVATION 3907

OPERATOR KERR-MC GEE CORPORATION

LEASE CONOCO STATE

U.S.G.S. TOPOGRAPHIC MAP
MARTHA CREEK, N.M.

JOHN WEST SURVEYING
HOBBS, NEW MEXICO
(505 393-3117)