

UNITED STATES
DEPARTMENT OF THE INTERIOR
BUREAU OF LAND MANAGEMENT

APPLICATION FOR PERMIT TO DRILL OR DEEPEN

1a. TYPE OF WORK

DRILL ☒DEEPEN ☐

b. TYPE OF WELL

OIL
WELL ☐GAS
WELL ☒

OTHER

SINGLE
ZONE ☒MULTIPLE
ZONE ☐

2. NAME OF OPERATOR

Santa Fe Snyder Corp.

3. ADDRESS AND TELEPHONE NO.

550 W. Texas, Suite 1330; Midland, Texas 79701 (915)682-6373

4. LOCATION OF WELL (Report location clearly and in accordance with any State requirements.)*

At surface
1699' FNL & 2576' FEL

At proposed prod. zone

14. DISTANCE IN MILES AND DIRECTION FROM NEAREST TOWN OR POST OFFICE*

15 miles west of Carlsbad, New Mexico

10. DISTANCE FROM PROPOSED*

LOCATION TO NEAREST
PROPERTY OR LEASE LINE, FT.
(Also to nearest drlg. unit line, if any)

1699'

13. DISTANCE FROM PROPOSED LOCATION*
TO NEAREST WELL, DRILLING, COMPLETED,
OR APPLIED FOR, ON THIS LEASE, FT.

2011'

16. NO. OF ACRES IN LEASE

640

17. NO. OF ACRES ASSIGNED
TO THIS WELL

320

19. PROPOSED DEPTH

8500'

20. ROTARY OR CABLE TOOLS

Rotary

21. ELEVATIONS (Show whether DF, RT, GR, etc.)

4158' GR

22. APPROX. DATE WORK WILL START*

October 4, 1999

23.

PROPOSED CASING AND CEMENTING PROGRAM

SIZE OF HOLE	GRADE, SIZE OF CASING	WEIGHT PER FOOT	SETTING DEPTH	QUANTITY OF CEMENT
17 1/2"	K-55 13 3/8"	54.5#	WITNESS 8500'	1300 sx to circulate
12 1/4"	K-55 & HCK-55 9 5/8"	40.0#	8500'	940 sx TOC @ 6000'

We propose to drill to a depth sufficient to test the Cisco/Canyon formation for oil.

If non-productive, the well will be plugged and abandoned in a manner consistent with Federal Regulations. Specific programs as per Onshore Oil and Gas Order No. 1 are outlined in the following attachments:

Drilling Program

- Exhibit A - Operations Plan
- Exhibit B - BOP and Choke Manifold
- Exhibit C - Drilling Fluid Program
- Exhibit D - Auxiliary Equipment
- Exhibit E - Topo Map of Location

Exhibit F - Map Showing Existing Wells

- Exhibit F (A) - Plat of Location
- Exhibit G - Well Site Layout
- Surface Use and Operations Plan
- H2S Drilling Operations Plan

APPROVAL SUBJECT TO
GENERAL REQUIREMENTS AND
SPECIAL STIPULATIONS
ATTACHED

Santa Fe Snyder Corp. accepts all applicable terms, conditions, stipulations and restrictions concerning operations conducted on the leased land or portion thereof, as described above.

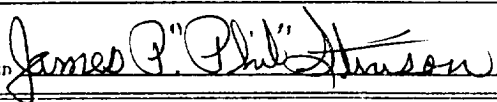
Bond Coverage: Blanket Bond

BLM Bond File No.: UT 0855

IN ABOVE SPACE DESCRIBE PROPOSED PROGRAM: If proposal is to deepen, give data on present productive zone and proposed new productive zone. If proposal is to drill or deepen directionally, give pertinent data on subsurface locations and measured and true vertical depths. Give blowout preventer program, if any.

24.

SIGNED



TITLE

Agent for Santa Fe Snyder Corp.

DATE

9-17-99

(This space for Federal or State office use)

PERMIT NO.

APPROVAL DATE

Application approval does not warrant or certify that the applicant holds legal or equitable title to those rights in the subject lease which would entitle the applicant to conduct operations thereon.
CONDITIONS OF APPROVAL, IF ANY:

APPROVED BY

TITLE

Acting

Assistant Field Office Manager.
Lands and Minerals

DATE

JAN 14 2000

*See Instructions On Reverse Side

RECEIVED

RECEIVED
SEP 20 99
BLM
ROSWELL, NM

DISTRICT I
P. O. Box 1980
Hobbs, NM 88241-1980

State of New Mexico
Ener Minerals, and Natural Resources De ment

Form C-102
Revised 02-10-94

Instructions on back

DISTRICT II
P. O. Drawer DD
Artesia, NM 88211-0719

OIL CONSERVATION DIVISION
P. O. Box 2088
Santa Fe, New Mexico 87504-2088

Submit to the Appropriate
District Office
State Lease - 4 copies
Fee Lease - 3 copies

☐ AMENDED REPORT

DISTRICT IV
P. O. Box 2088
Santa Fe, NM 87507-2088

WELL LOCATION AND ACREAGE DEDICATION PLAT

1 API Number		2 Pool Code 33685		3 Pool Name Indian Basin (Upper Penn)		A550C	
4 Property Code		5 Property Name JONES CANYON '4' FEDERAL				6 Well Number 5	
7 OGRID No. 20305		8 Operator Name SANTA FE SNYDER CORPORATION				9 Elevation 4158'	

10 SURFACE LOCATION

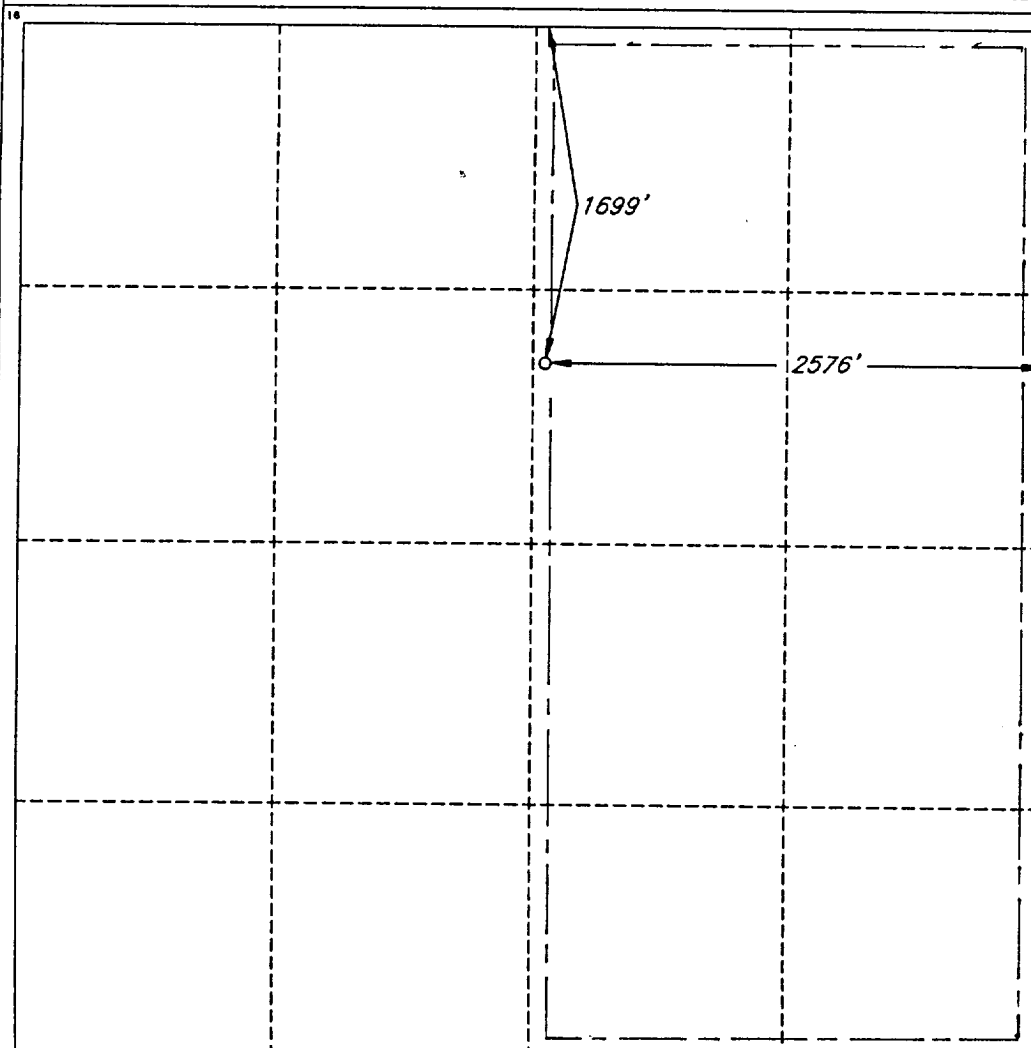
UL or lot no. G	Section 4	Township 22 SOUTH	Range 24 EAST, N.M.P.M.	Lot Ida	Feet from the 1699'	North/South line NORTH	Feet from the 2576'	East/West line EAST	County EDDY
--------------------	--------------	----------------------	----------------------------	---------	------------------------	---------------------------	------------------------	------------------------	----------------

"BOTTOM HOLE LOCATION IF DIFFERENT FROM SURFACE

UL or lot no.	Section	Township	Range	Lot Ida	Feet from the	North/South line	Feet from the	East/West line	County
---------------	---------	----------	-------	---------	---------------	------------------	---------------	----------------	--------

12 Dedicated Acres 320	13 Joint or Infill	14 Consolidation Code	15 Order No.
---------------------------	--------------------	-----------------------	--------------

NO ALLOWABLE WELL BE ASSIGNED TO THIS COMPLETION UNTIL ALL INTERESTS HAVE BEEN CONSOLIDATED OR A NON-STANDARD UNIT HAS BEEN APPROVED BY THE DIVISION



OPERATOR CERTIFICATION

I hereby certify that the information contained herein is true and complete to the best of my knowledge and belief.

Signature: *James P. "Phil" Stinson*
Printed Name: James P. "Phil" Stinson

Title: Agent for Santa Fe Snyder

Date: 9-17-99

SURVEYOR CERTIFICATION

I hereby certify that the well location shown on this plat was plotted from field notes of actual surveys made by me or under my supervision, and that the same is true and correct to the best of my belief.

Date of Survey: AUGUST 24, 1999

Signature and Seal of Professional Surveyor

V. L. BEZNER
V. L. BEZNER
NO. 7920
9-1-99

Certificate No. 7920
V. L. BEZNER R.P.S. #7920

JOB #64844 / 51 NE / V.H.B.

EXHIBIT B

Santa Fe Snyder Corp.
Jones Canyon "4" Fed #5
1699' FNL & 2576' FEL
Section 4, T-22-S, R-24-E
Eddy County, New Mexico

