

EXHIBIT C-2

State of New Mexico

Energy, Minerals and Natural Resources Department

Form C-102

Revised February 10, 1994

Submit to Appropriate District Office

State Lease - 4 Copies

Fee Lease - 3 Copies

DISTRICT I

Box 1888, Hobbs, NM 88241-1888

DISTRICT II

P.O. Drawer DD, Artesia, NM 88211-0719

DISTRICT III

1000 Rio Brasos Rd., Artesia, NM 87410

DISTRICT IV

P.O. BOX 2088, SANTA FE, N.M. 87504-2088

## OIL CONSERVATION DIVISION

P.O. Box 2088

Santa Fe, New Mexico 87504-2088

☐ AMENDED REPORT

## WELL LOCATION AND ACREAGE DEDICATION PLAT

API Number	Pool Code	Pool Name <i>Foster Draw: Delaware Gas</i>
Property Code	Property Name AVALON 1 FEDERAL	Well Number 2
OGRID No. <i>002678</i>	Operator Name BONNEVILLE FUELS CORPORATON	Elevation 3191

## Surface Location

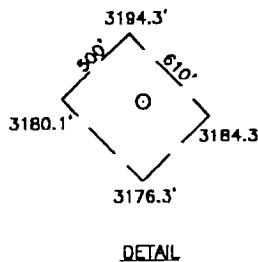
UL or lot No.	Section	Township	Range	Lot Idn	Feet from the	North/South line	Feet from the	East/West line	County
LOT 31	1	21 S	26 E		2686	SOUTH	1999	EAST	EDDY

## Bottom Hole Location If Different From Surface

UL or lot No.	Section	Township	Range	Lot Idn	Feet from the	North/South line	Feet from the	East/West line	County
LOT 34	1	21 S	26 E		1900	SOUTH	1800	EAST	EDDY
Dedicated Acres <i>164.66</i>	Joint or Infill	Consolidation Code	Order No.						

NO ALLOWABLE WILL BE ASSIGNED TO THIS COMPLETION UNTIL ALL INTERESTS HAVE BEEN CONSOLIDATED  
OR A NON-STANDARD UNIT HAS BEEN APPROVED BY THE DIVISION

20	19	18	17
29.49 AC.	29.85 AC.	30.28 AC.	30.85 AC.
21	22	23	24
38.99 AC.	39.39 AC.	39.93 AC.	40.29 AC.
28	27	26	25
39.01 AC.	39.41 AC.	40.06 AC.	40.42 AC.
29	30	31	32
39.02 AC.	39.42 AC.	40.19 AC.	40.56 AC.
36	35	34	33
40.59 AC.	40.66 AC.	41.07 AC.	41.14 AC.
37	38	39	40
40.94 AC.	41.01 AC.	41.19 AC.	41.26 AC.



## OPERATOR CERTIFICATION

I hereby certify the the information  
contained herein is true and correct to the  
best of my knowledge and belief.

Signature

Printed Name

Title

Date

## SURVEYOR CERTIFICATION

I hereby certify that the well location shown  
on this plat was plotted from field notes of  
actual surveys made by me or under my  
supervision, and that the same is true and  
correct to the best of my belief.

DECEMBER 8, 1999

Date Surveyed

Signature & Seal of  
Professional Surveyor

*Ronald J. Edison* 12-14-99  
99-11-1081

Certificate No. RONALD J. EDISON

3239  
12641

Acres Dedication: 164.66 ac.  
Lots 33, 34, 39 & 40.