

District I
1625 N. French Dr., Hobbs, NM 88240
District II
811 South First, Artesia, NM 88210
District III
1000 Rio Brazos Road, Aztec, NM 87410
District IV
2040 South Pacheco, Santa Fe, NM 87505

State of New Mexico
Energy Minerals and Natural Resources

Oil Conservation Division
2040 South Pacheco
Santa Fe, NM 87505

Form C-101
Revised March 17, 1999

Submit to appropriate District Office
State Lease - 6 Copies
Fee Lease - 5 Copies

☐ AMENDED REPORT

APPLICATION FOR PERMIT TO DRILL, RE-ENTER, DEEPEN, PLUGBACK, OR ADD A ZONE

Operator Name and Address POGO PRODUCING COMPANY P.O. BOX 10340 MIDLAND, TEXAS 79702-7340		OGRID Number 13117891
Property Code 26401	Property Name LOST TANK "35" STATE	API Number 30-015-31275
		Well No. 4

Surface Location

UL or lot no.	Section	Township	Range	Lot ldn	Feet from the	North/South line	Feet from the	East/West line	County
M	35	21S	31E		330'	SOUTH	560'	WEST	EDDY

Proposed Bottom Hole Location If Different From Surface

UL or lot no.	Section	Township	Range	Lot ldn	Feet from the	North/South line	Feet from the	East/West line	County

Proposed Pool 1 LOST TANK - DELAWARE (40299)	Proposed Pool 2
---	-----------------

Work Type Code N	Well Type Code O	Cable/Rotary R	Lease Type Code S	Ground Level Elevation 3518'
Multiple NO	Proposed Depth 8500'	Formation DELAWARE	Contractor UNKNOWN	Spud Date WHEN APPROVED

Proposed Casing and Cement Program

Hole Size	Casing Size	Casing weight/foot	Setting Depth	Sacks of Cement	Estimated TOC
17 1/2"	13 3/8"	54.5	800'	775	Surface
11"	8 5/8"	24 & 32	4300'	1400	Surface
7 7/8"	5 1/2"	15.5 & 17	8500'	1400	Surface

22 Describe the proposed program. If this application is to DEEPEN or PLUG BACK, give the data on the present productive zone and proposed new productive zone.
Describe the blowout prevention program, if any. Use additional sheets if necessary.

- Set 40' of 20" conductor pipe and cement to surface with Redi-mix.
- Drill 17 1/2" hole to 800'. Run and set 800' of 13 3/8" 54.5# J-55 ST&C casing. Cement with 775 Sx. of Class "C" cement + 2% CaCl, circulate cement to surface.
- Drill 11" hole to 4300'. Run and set 4300' of 8 5/8" 32 & 24 # J-55 ST&C casing. Cement with 1400 Sx. of Class "C" cement + additives, circulate cement to surface.
- Drill 7 7/8" hole to 8500'. Run and set 8500' of 5 1/2" 17 & 15.5# J-55, LT&C casing. Cement with 1400 Sx. of Class "C" & Class "H" cement + additives, circulate cement to surface.

Notify OCD at SPUD & TIME
to witness cementing the
13 1/2" casing.

23 I hereby certify that the information given above is true and complete to the best of my knowledge and belief.

Signature:

Printed name: Joe T. Janica

Title: Agent

Date: 07/31/00

Phone: 505-391-8503

OIL CONSERVATION DIVISION

Approved by:

ORIGINAL SIGNED BY TIM W. GUM
DISTRICT II SUPERVISOR

Title:

JUL 31 2000

Approval Date:

Expiration Date:

7-31-01

Conditions of Approval:

DISTRICT I
P.O. Box 1980, Hobbs, NM 88241-1980

DISTRICT II
P.O. Drawer ED, Artesia, NM 88211-0719

DISTRICT III
1000 Rio Brazos Rd., Aztec, NM 87410

DISTRICT IV
P.O. BOX 2088, SANTA FE, N.M. 87504-2088

State of New Mexico
Energy, Minerals and Natural Resources Department

OIL CONSERVATION DIVISION

P.O. Box 2088
Santa Fe, New Mexico 87504-2088

Form C-102
Revised February 10, 1994
Submit to Appropriate District Office
State Lease - 4 Copies
For Lease - 3 Copies

☐ AMENDED REPORT

WELL LOCATION AND ACREAGE DEDICATION PLAT

API Number	Pool Code 40299	Pool Name LOST TANK-DELAWARE
Property Code	Property Name LOST TANK 35 STATE	Well Number 4
OGRD No. 17891	Operator Name POGO PRODUCING COMPANY	Elevation 3518

Surface Location

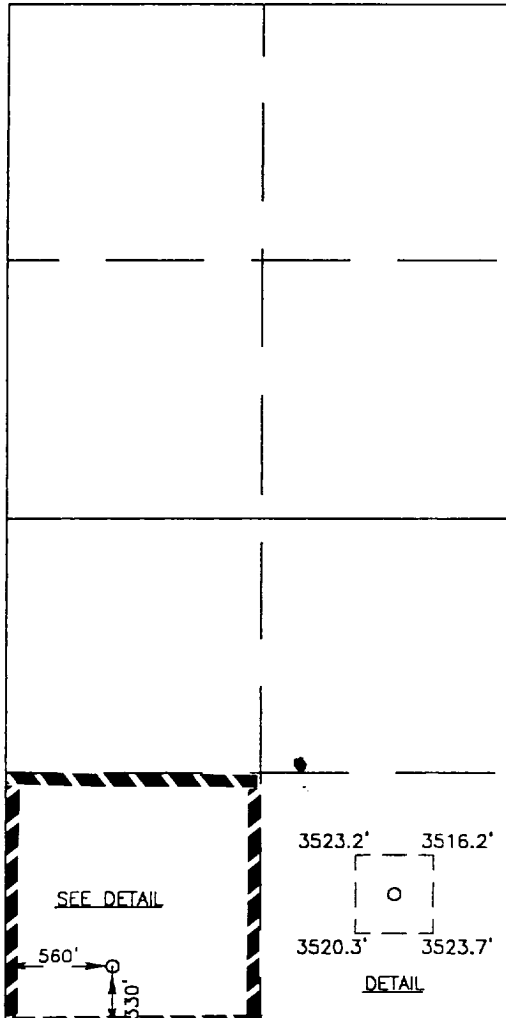
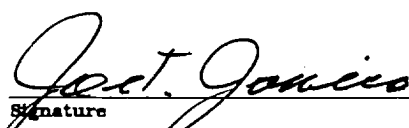
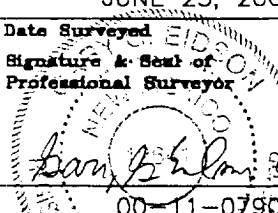
UL or lot No. M	Section 35	Township 21 S	Range 31 E	Lot Idn	Feet from the 330	North/South line SOUTH	Feet from the 560	East/West line WEST	County EDDY
--------------------	---------------	------------------	---------------	---------	----------------------	---------------------------	----------------------	------------------------	----------------

Bottom Hole Location If Different From Surface

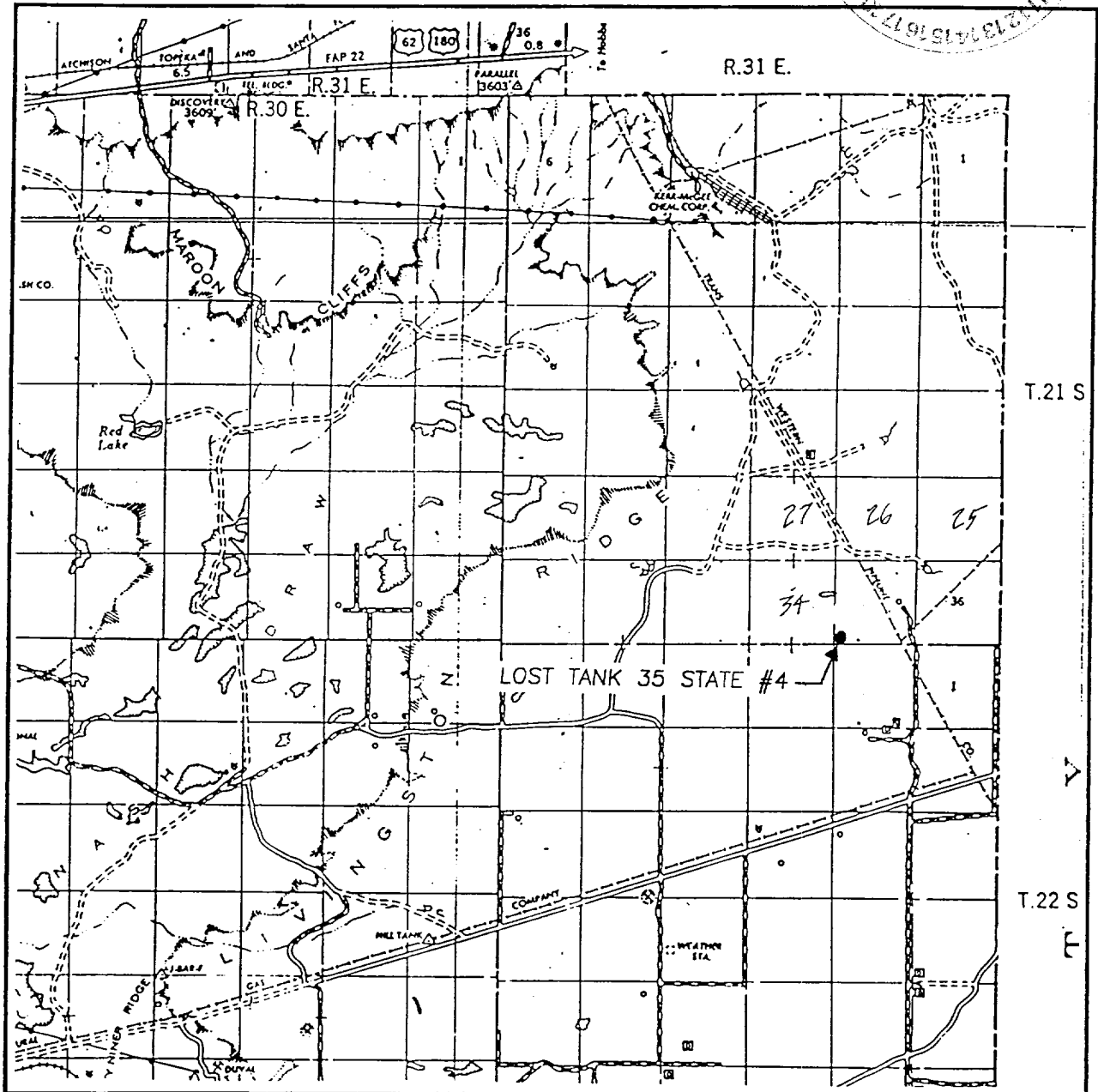
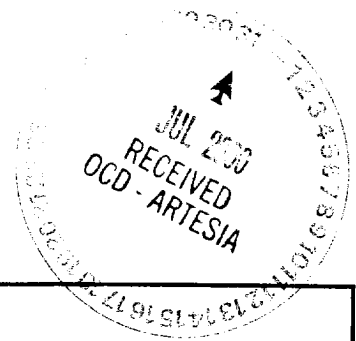
UL or lot No.	Section	Township	Range	Lot Idn	Feet from the	North/South line	Feet from the	East/West line	County
---------------	---------	----------	-------	---------	---------------	------------------	---------------	----------------	--------

Dedicated Acres 40	Joint or Infill	Consolidation Code	Order No.
-----------------------	-----------------	--------------------	-----------

NO ALLOWABLE WILL BE ASSIGNED TO THIS COMPLETION UNTIL ALL INTERESTS HAVE BEEN CONSOLIDATED
OR A NON-STANDARD UNIT HAS BEEN APPROVED BY THE DIVISION

	<p>OPERATOR CERTIFICATION</p> <p>I hereby certify the the information contained herein is true and complete to the best of my knowledge and belief.</p> <p> Signature Joe T. Janica Printed Name Agent Title 07/31/00 Date</p>	
	<p>SURVEYOR CERTIFICATION</p> <p>I hereby certify that the well location shown on this plat was plotted from field notes of actual surveys made by me or under my supervision and that the same is true and correct to the best of my belief.</p> <p>JUNE 23, 2000 Date Surveyed Signature & Seal of Professional Surveyor  00-11-0790 Certificate No. RONALD F. EDSON 3239 GARY EDSON 12641 MACON McDONALD 12185</p>	

VICINITY MAP

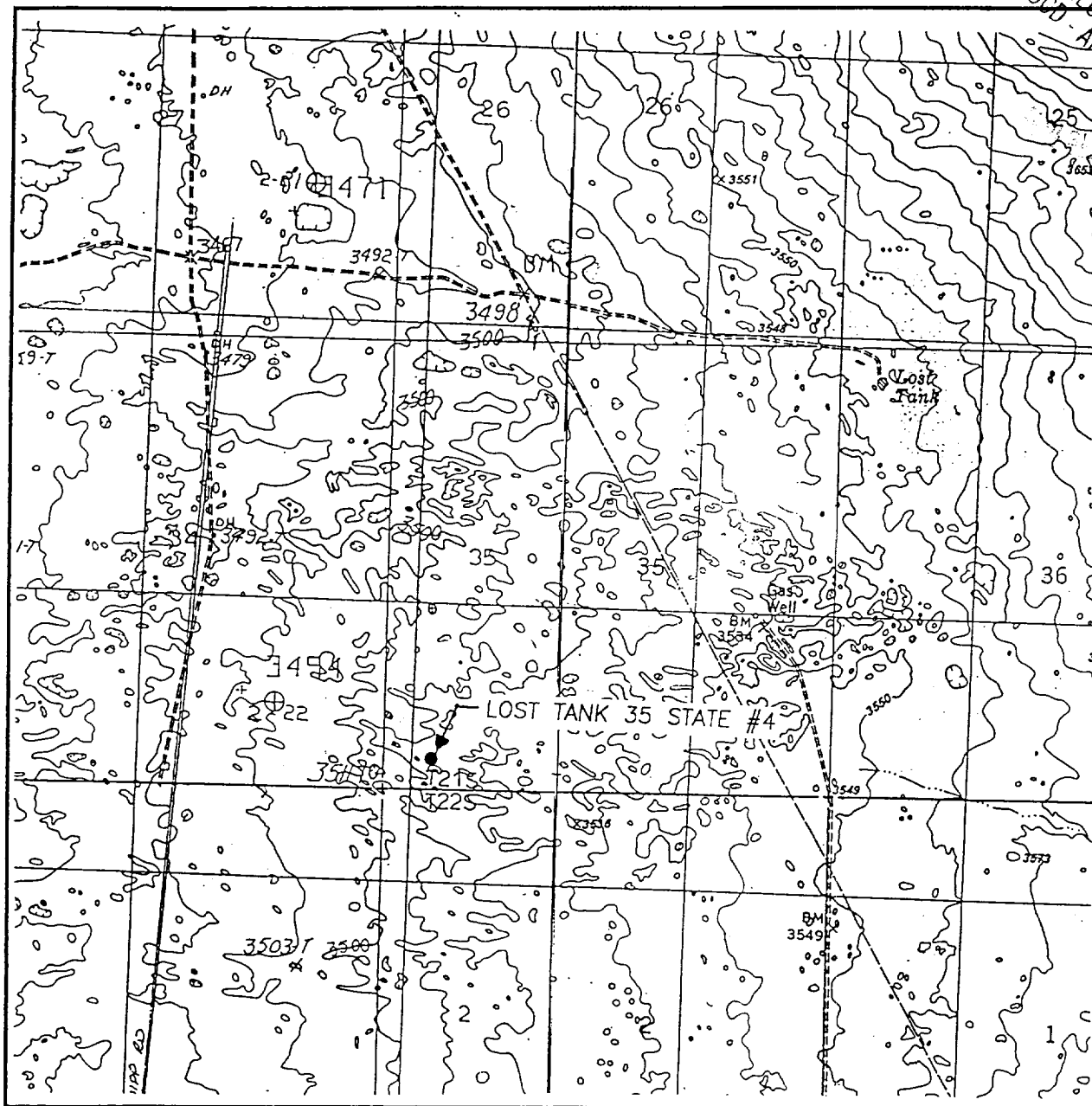


SCALE: 1" = 2 MILES

SEC. 35 TWP. 21-S RGE. 31-E
 SURVEY N.M.P.M.
 COUNTY EDDY
 DESCRIPTION 330' FSL & 560' FWL
 ELEVATION 3518
 OPERATOR POGO PRODUCING COMPANY
 LEASE LOST TANK 35 STATE

JOHN WEST SURVEYING
 HOBBS, NEW MEXICO
 (505) 393-3117

LOCATION VERIFICATION MAP



SCALE: 1" = 2000'

CONTOUR INTERVAL: 10'

SEC. 35 TWP. 21-S RGE. 31-E

SURVEY N.M.P.M.

COUNTY EDDY

DESCRIPTION 330' FSL & 560' FWL

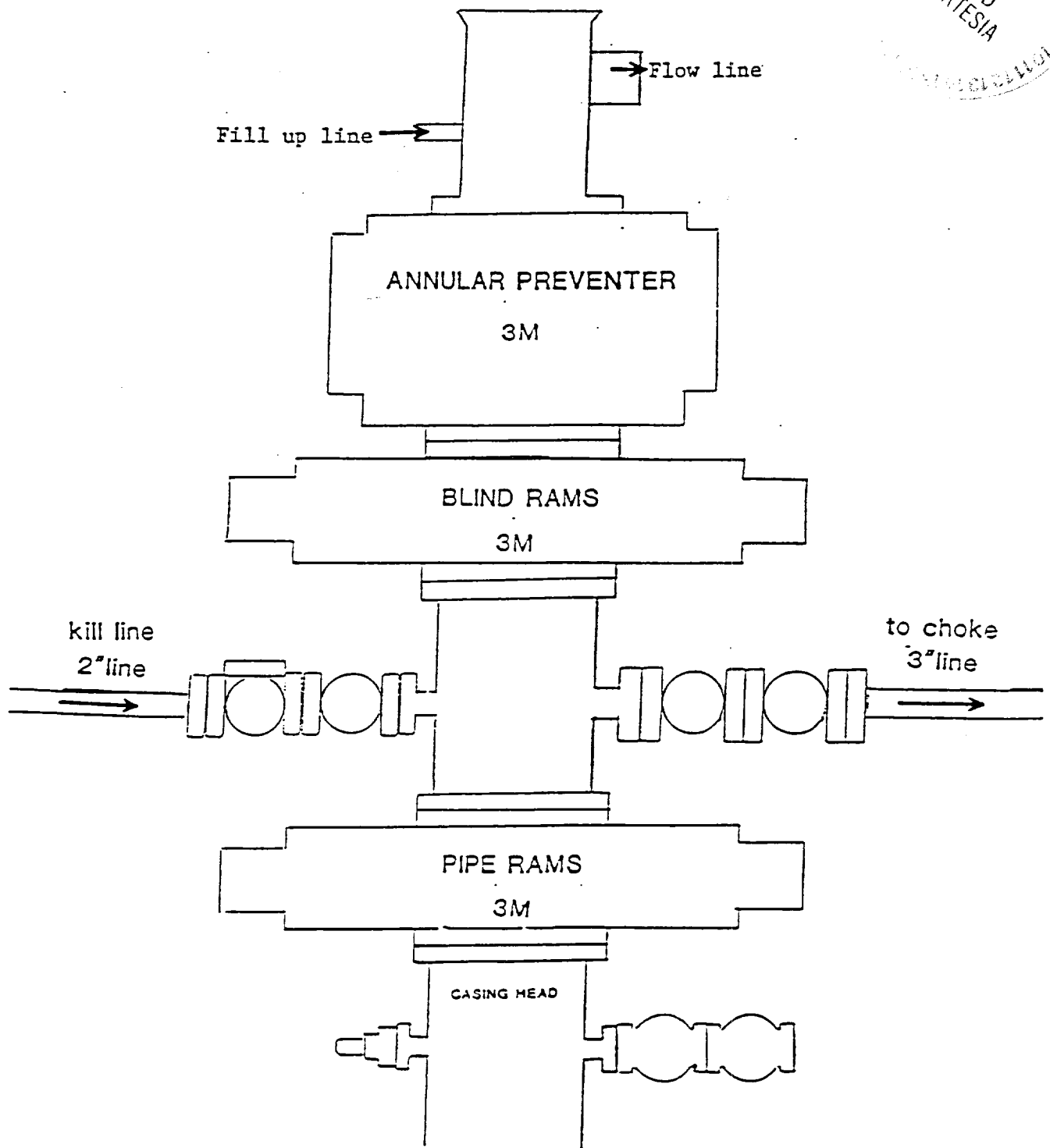
ELEVATION 3518

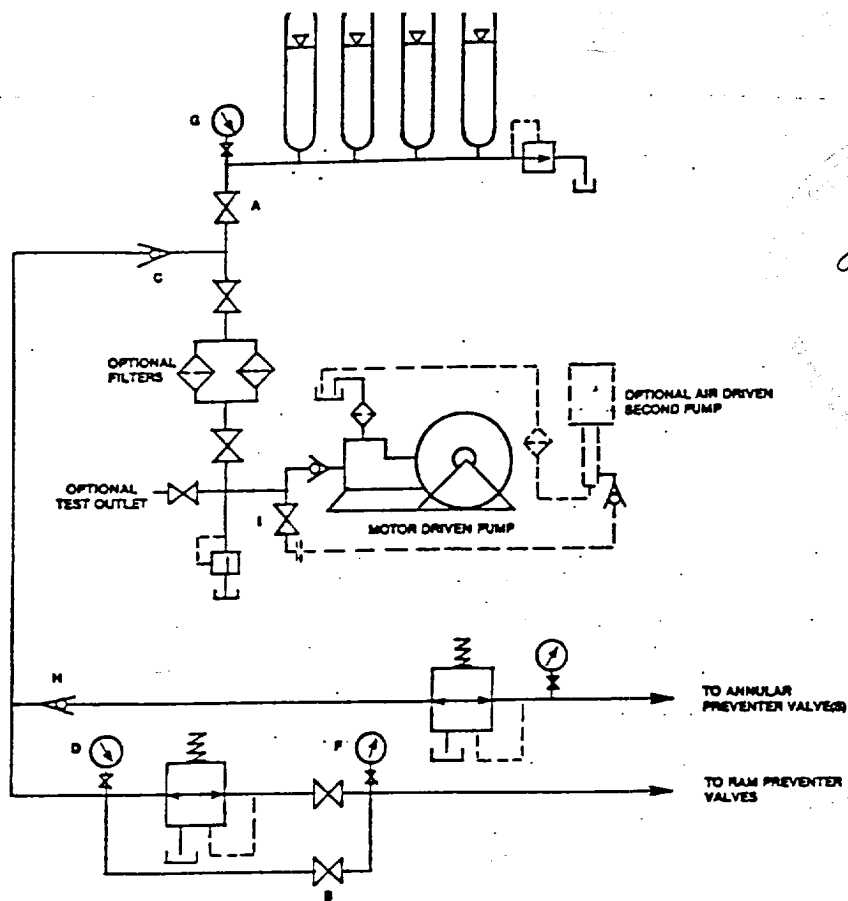
OPERATOR POGO PRODUCING COMPANY

LEASE LOST TANK 35 STATE

U.S.G.S. TOPOGRAPHIC MAP
LIVINGSTON RIDGE & THE DIVIDE, N.M.

JOHN WEST SURVEYING
HOBBS, NEW MEXICO
(505) 393-3117





HAND AJUSTABLE CHOKE

