

DISTRICT I

P.O. Box 1980, Hobbs, NM 88241-1980

DISTRICT II

P.O. Drawer DD, Artesia, NM 88211-0719

DISTRICT III

1000 Rio Brazos Rd., Aztec, NM 87410

DISTRICT IV

P.O. BOX 2088, SANTA FE, N.M. 87504-2088

State of New Mexico

Energy, Minerals and Natural Resources Department

Form C-102

Revised February 10, 1994

Submit to Appropriate District Office

State Lease - 4 Copies

Fee Lease - 3 Copies

## OIL CONSERVATION DIVISION

P.O. Box 2088

Santa Fe, New Mexico 87504-2088

☐ AMENDED REPORT

## WELL LOCATION AND ACREAGE DEDICATION PLAT

API Number	Pool Code	Pool Name
	73280	Burton Flat Morrow
Property Code	Property Name	Well Number
2153	AVALON 1 FEDERAL	4
OGRID No.	Operator Name	Elevation
002678	BONNEVILLE FUELS CORPORATION	3193

## Surface Location

UL or lot No.	Section	Township	Range	Lot Idn	Feet from the	North/South line	Feet from the	East/West line	County
LOT 31	1	21 S	26 E		2853	SOUTH	1643	EAST	EDDY

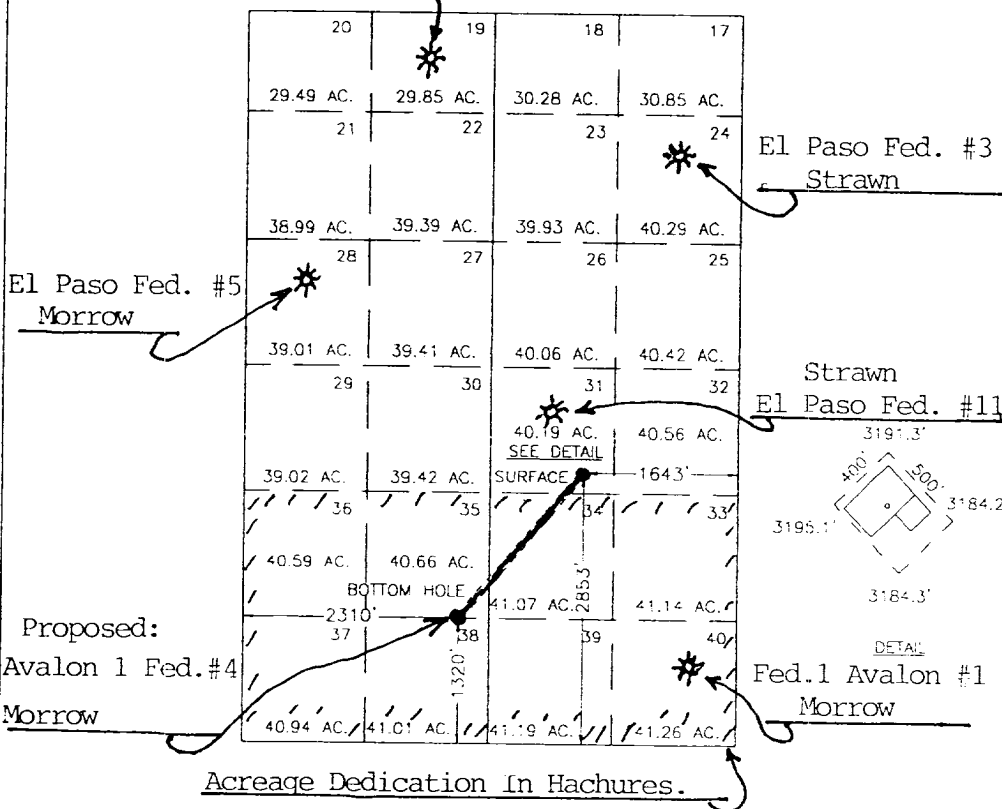
## Bottom Hole Location If Different From Surface

UL or lot No.	Section	Township	Range	Lot Idn	Feet from the	North/South line	Feet from the	East/West line	County
LOT 38	1	21 S	26 E		1320	SOUTH	2310	WEST	EDDY

Dedicated Acres	Joint or Infill	Consolidation Code	Order No.
327.86 ac.	In-Fill		NSL - 4494 (NSBHL): attached.

NO ALLOWABLE WILL BE ASSIGNED TO THIS COMPLETION UNTIL ALL INTERESTS HAVE BEEN CONSOLIDATED  
OR A NON-STANDARD UNIT HAS BEEN APPROVED BY THE DIVISION

## Gulf Fed. Com. #1: Morrow



## OPERATOR CERTIFICATION

I hereby certify that the information contained herein is true and complete to the best of my knowledge and belief.

*R. A. Schwering*  
Signature

R. A. Schwering, P.E.  
Printed Name

Operations Manager: SE NM  
Title

7/31/2000  
Date

## SURVEYOR CERTIFICATION

I hereby certify that the well location shown on this plat was plotted from field notes of actual surveys made by me or under my supervision, and that the same is true and correct to the best of my belief.

JUNE 15, 2000

Date Surveyed DC

Signature & Seal of  
Professional Surveyor

*Ronald J. Edson* 6/16/00  
00-11-0747

Certificate No. RONALD J. EDSON 3239  
GARY EDSON 12641  
MACON McDONALD 12185



# NEW MEXICO ENERGY, MINERALS and NATURAL RESOURCES DEPARTMENT

2/3

**GARY E. JOHNSON**

Governor

**Jennifer A. Salisbury**

Cabinet Secretary

July 28, 2000

**Lori Wrotenbery**

Director

Oil Conservation Division

**Bonneville Fuels Corporation**  
**1660 Lincoln - Suite 2200**  
**Denver, Colorado 80264**  
**Attention: Bob Schwering**

Telefax No. (303) 863-1558

***Administrative Order NSL-4494(NSBHL)***

Dear Mr. Schwering:

Reference is made to the following: (i) your application dated June 27, 2000; (ii) the records of the New Mexico Oil Conservation Division in Santa Fe ("Division") including the file on Division Order No. R-5198; and (iii) your telephone conversation with Mr. Michael E. Stogner, Division Chief Hearing Officer/Engineer, in Santa Fe on Friday, July 28, 2000: all concerning Bonneville Fuels Corporation's ("Bonneville") request for a non-standard subsurface bottomhole gas well location, pursuant to Division Rule 104.F and 111.C (2) to be applicable to any and all formations and/or pools developed on 320-acre spacing from the base of the Wolfcamp formation to the base of the Morrow formation, which presently includes but is not necessarily limited to the Undesignated North Avalon-Upper Pennsylvanian Gas Pool, Undesignated West Burton Flat-Strawn Gas Pool, Undesignated Calabaza Draw-Atoka Gas Pool, Undesignated Alacran Hills-Atoka Gas Pool, and Burton Flat-Morrow Gas Pool, for Bonneville's proposed Avalon "1" Federal Well No. 4 to be drilled from a surface location 2853 feet from the South line and 1643 feet from the East line (Lot 31/Unit O) of irregular Section 1, Township 21 South, Range 26 East, NMPM, Eddy County, New Mexico.

Lots 33 through 40 of irregular Section 1, being a standard 327.86-acre lay-down gas spacing and proration unit for the above-described intervals, is to be dedicated to this well. Gas production from the Burton Flat-Morrow Gas Pool underlying this acreage is currently dedicated to Bonneville's Avalon Federal Well No. 1 (API No. 30-015-21814) located at an unorthodox gas well location (approved by Division Order No. R-5198, issued in Case No. 5198 dated April 20, 1976) 803 feet from the South line and 350 feet from the East line (Lot 40/Unit X) of irregular Section 1.

This application has been duly filed under the provisions of Division Rules 104.F, revised by Division Order No. R-11231, issued by the New Mexico Oil Conservation Commission in Case No. 12119 on August 12, 1999, and 111.C (2).

It is our understanding that Bonneville intends to initially drill vertically to a depth of 2,400 feet, kick-off and directionally drill in a southwesterly direction, and at a depth of 9,200 feet TVD (9545 feet MD) return to vertical. The well will then be drilled (vertically) to a total depth of 11,400

Administrative Order NSL-4494(NSBHL)  
Bonneville Fuels Corporation  
July 28, 2000  
Page 2

---

3/3

feet TVD (11,745 feet MD) to a targeted unorthodox bottomhole gas well location that is approximately 1320 feet from the South line and 2310 feet from the West line (Lot 38/Unit V) of irregular Section 1.

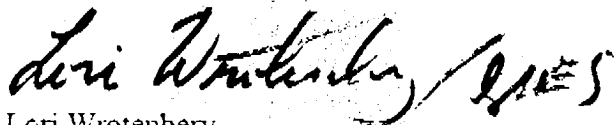
The geologic interpretation submitted with this application indicates that a well drilled at the proposed unorthodox Morrow infill gas well location will be at a more favorable geologic position within the Burton Flat-Morrow Gas Pool than a well drilled at a location considered to be standard within the SW/4 equivalent of irregular Section 1.

By the authority granted me under the provisions of Division Rule 104.F (2), Bonneville is hereby authorized to directionally drill is proposed Avalon "1" Federal Well No. 4 as close as is reasonably possible to a targeted subsurface location considered to be unorthodox 1320 feet from the South line and 2310 feet from the West line of irregular Section 1.

Further, Bonneville shall comply with all provisions of Division Rule 111 applicable in this matter.

Jurisdiction of this case is retained for the entry of such further orders as the Division may deem necessary.

Sincerely,



Lori Wrotenbery  
Director

LW/MES/kv

cc: New Mexico Oil Conservation Division - Artesia  
U. S. Bureau of Land Management - Carlsbad  
U. S. Bureau of Land Management - Roswell