

7. **ABNORMAL CONDITIONS - PRESSURE - TEMPERATURE - POTENTIAL HAZARDS:**
Continued:

c. 7-7/8" Production Hole from 1,800' to 4450' TD:

i. Well/Pressure Control Considerations:

| FORMATION TARGET: | TVD: | EST. BHP: | GRADIENT: | RATING: |
|---------------------|-------|-----------|-----------|----------|
| | Feet: | PSIG | PSI/FT | |
| Delaware Fm.: | | | | |
| Cherry Canyon Mbr.: | 2505' | 1550 | 0.619 | Abnormal |
| Brushy Canyon Mbr.: | 3335' | 1550 | 0.465 | Normal |
| Bone Springs Fm.: | 4250' | 1750 | 0.412 | Normal |

KICKS AND WELL CONTROL HAZARDS ARE COMMON IN THIS AREA:

AN ADEQUATE SUPPLY OF BRINE WATER, SALTS & SALT-WATER GEL, AND/OR BARITE WILL BE MAINTAINED ON LOCATION AT ALL TIMES, THROUGHOUT DRILLING OPERATIONS BELOW THE 8-5/8" CASING SHOE @ 1,800', TO RAISE THE MUD WEIGHT OF THE HOLE & STEEL PIT CIRCULATING SYSTEM A MINIMUM OF 2 PPG. An OPTIONAL PVT system with an optional gas buster and optional rotating head may be installed immediately after the 8-5/8" casing is set (prior to drilling out the 8-5/8" casing shoe @ 1,800'). This equipment will permit the safe handling of minor gas volumes at the surface and the monitoring of well flow and trip volumes while the well is being drilled.

ii. Normal temperatures (95 F. to 105 F.) are anticipated.

iii. H2S (Hydrogen Sulfide) Gas Hazards:

Potential H2S is anticipated in the Delaware Fm. from 2,225' to 4450' TD. An H2S Safety Plan is prepared as Exhibit #3 and will be posted at the well-site. An H2S monitoring system will be rigged-up and functional after the 8-5/8" Casing is set at 1,800', and PRIOR TO DRILLING OUT OF THE 8-5/8" CASING SHOE. ALL RIG-SITE AND SUPERVISORY PERSONNEL WILL BE TRAINED/CERTIFIED TO WORK IN AN H2S ENVIRONMENT PRIOR TO ENTRY ONTO THIS JOB SITE.

8. ANTICIPATED STARTING DATE AND DURATION OF OPERATIONS:

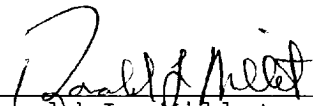
Location construction may be commenced in Late November after BLM APD and BOR ROW approvals are received. After NMOCD approval, as soon as a rig is available to drill this well economically, this well will be spud and drilled to a projected T.D. @ 4,450'. Anticipated spud date is December 15, 2000. Est. 15 drilling days. Est. 10 completion days and 15 days constructing site facilities. Est. 1st production on or after February 1, 2000.

CERTIFICATION:

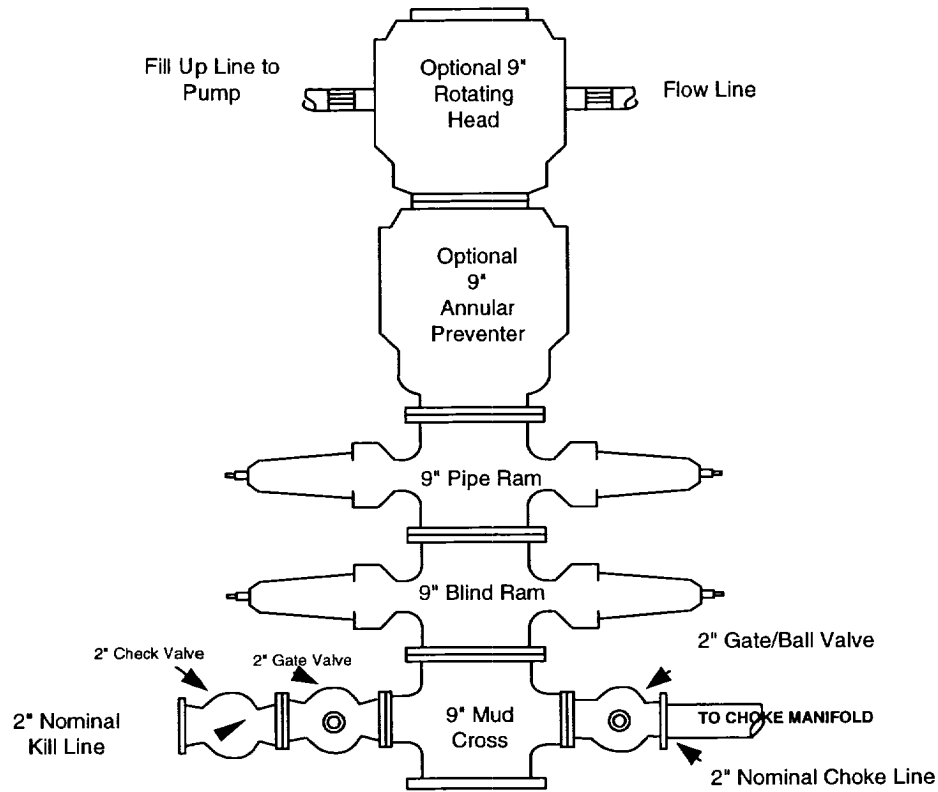
I hereby certify that I, or persons under my direct supervision, have inspected the proposed drill site and access routes; that I am familiar with the conditions which currently exist; that the statements made in this plan are, to the best of my knowledge, true and correct; and that the work associated with operations proposed herein will be performed by Bonneville Fuels Corporation and its contractors and subcontractors in conformity with this plan and the terms & conditions under which it is approved. This statement is subject to the provisions of 18 U.S.C. 1001 for the filing of a false statement.

Date: 11/9/00

Signature: _____


Ronald L. Millet
Drilling Manager
Bonneville Fuels Corporation

Avalon 10 Federal #23/22^{1A}3/42
Minimum Blow-Out Preventer
Requirements
All 3000 PSI WP Equipment
(Except Casinghead & Spools as Noted
Below)



Wellhead Equipment :
1800'-TD

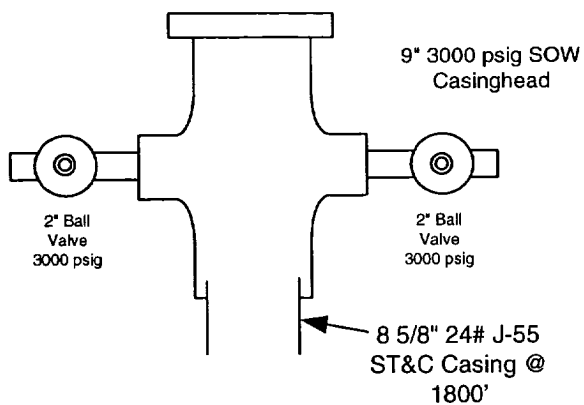


EXHIBIT '3a'

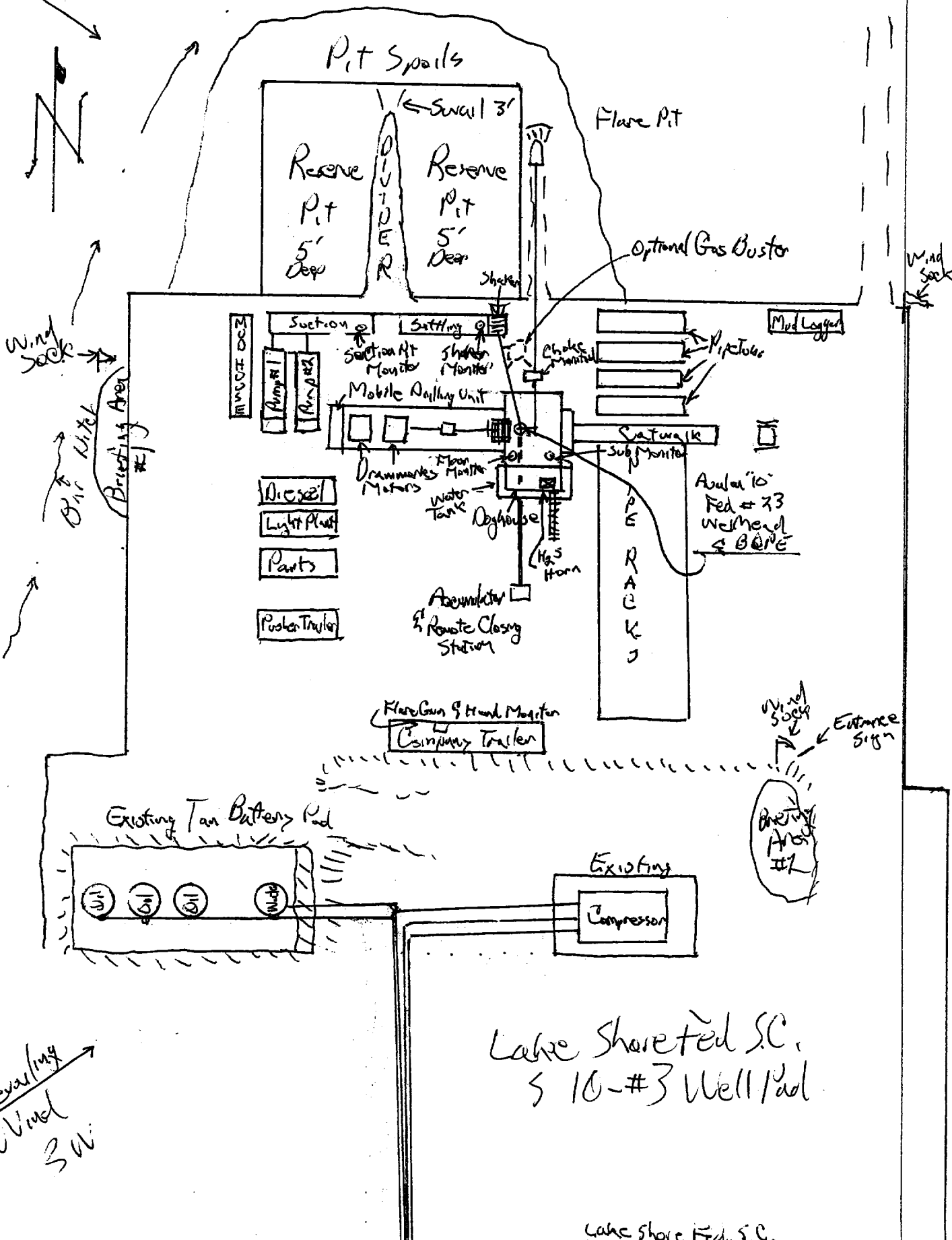
Avalon "10" Federal #23

H₂S Monitor Equipment

Briefing Area
Locations

Prevailing Wind
NW

500 SHEETS, FILLER 5 SQUARE
40 SHEETS, FILLER 5 SQUARE
42-381 100 SHEETS, FILLER 5 SQUARE
42-382 100 SHEETS, FILLER 5 SQUARE
42-383 100 SHEETS, FILLER 5 SQUARE
42-384 100 SHEETS, FILLER 5 SQUARE
42-385 100 SHEETS, FILLER 5 SQUARE
42-386 100 SHEETS, FILLER 5 SQUARE
42-387 100 SHEETS, FILLER 5 SQUARE
42-388 100 SHEETS, FILLER 5 SQUARE
42-389 200 RECYCLED WHITE 5 SQUARE
Made in U.S.A.



Lake Shore Fed S.C.
#10-#3 Well Pad

Lake Shore Fed S.C.