

District I
1625 N. French Dr., Hobbs, NM 88240
District II
811 South First, Artesia, NM 88210
District III
1000 Rio Brazos Road, Aztec, NM 87410
District IV
2040 South Pacheco, Santa Fe, NM 87505

State of New Mexico
Energy Minerals and Natural Resources

Oil Conservation Division
2040 South Pacheco
Santa Fe, NM 87505

Form C-101
Revised March 17, 1999

Submit to appropriate District Office
State Lease - 6 Copies
Fee Lease - 5 Copies

☐ AMENDED REPORT

APPLICATION FOR PERMIT TO DRILL, RE-ENTER, DEEPEN, PLUGBACK, OR ADD A ZONE

¹ Operator Name and Address OXY USA Inc. P.O. Box 50250 Midland, TX 79710-0250		² OGRID Number 16696
		³ API Number 30-015-31551
³ Property Code 22149	⁵ Property Name OXY Uncle Ben State	⁶ Well No. 1

⁷ Surface Location

UL or lot no.	Section	Township	Range	Lot Idn	Feet from the	North/South line	Feet from the	East/West line	County
K	21	20S	27E		1980	South	1980	West	Eddy

⁸ Proposed Bottom Hole Location If Different From Surface

UL or lot no.	Section	Township	Range	Lot Idn	Feet from the	North/South line	Feet from the	East/West line	County
⁹ Proposed Pool 1 Undesignated Avalon Morrow					¹⁰ Proposed Pool 2 70920				

¹¹ Work Type Code N	¹² Well Type Code G	¹³ Cable/Rotary R	¹⁴ Lease Type Code S - V4808	¹⁵ Ground Level Elevation 3232
¹⁶ Multiple No	¹⁷ Proposed Depth 11400'	¹⁸ Formation Morrow	¹⁹ Contractor UTI	²⁰ Spud Date 1/22/01

²¹ Proposed Casing and Cement Program

Hole Size	Casing Size	Casing weight/foot	Setting Depth	Sacks of Cement	Estimated TOC
17-1/2"	13-3/8"	48#	600'	550	Surface
12-1/4"	9-5/8"	36#	3000'	850	Surface
8-3/4"	5-1/2"	17#	11400'	775	EST TOC 8300'
			@ 2200 - 2400'		

22 Describe the proposed program. If this application is to DEEPEN or PLUG BACK, give the data on the present productive zone and proposed new productive zone. Describe the blowout prevention program, if any. Use additional sheets if necessary.

SEE OTHER SIDE

NOTIFY OCD SPUD & TIME TO WITNESS
& 9 5/8" CEMENTING OF CASING

²³ I hereby certify that the information given above is true and complete to the best of my knowledge and belief.

Signature:

Printed name: David Stewart

Title: Regulatory Analyst

Date: 1/15/01

Phone: 915-685-5717

OIL CONSERVATION DIVISION

Approved by: ORIGINAL SIGNED BY TIM W. GUM
DISTRICT II SUPERVISOR

Title:

Approval Date: JAN 18 2001

Expiration Date: JAN 18 2002

Conditions of Approval:

Attached ☐

OXY Uncle Ben State #1
1980 FSL 1980 FWL SEC 21 T20S R27E Eddy County, NM
State Lease No. V-4808

PROPOSED TD: 11400' TVD

BOP PROGRAM: 0' - 600' None

600' - 3000' 13-5/8" 3M annular preventer.

3000' - 11400' 11" 5M blind pipe rams with 5M annular preventer
and rotating head below 8300'.

CASING: Surface: 13-3/8" OD 48# H40 ST&C new casing set at 600'

Intermediate: 9-5/8" OD 36# K55 ST&C new casing from 0-3000'

Production: 5-1/2" OD 17# N80-S95 LT&C new casing from 0-11400'

CEMENT: Surface - Circulate cement with 350sx 35:65 POZ/C with 6% Bentonite
+ 2% CaCl₂ + .25#/sx Cello-Seal followed by 200sx Cl C with 2% CaCl₂.

Intermediate - Circulate cement with 650sx 35:65 POZ/C with 6%
Bentonite + 2% CaCl₂ + .25#/sx Cello-Seal followed by 200sx Cl C
with 2% CaCl₂.

Production - Cement with 700sx 15:61:11 POZ/C/CSE with .5% FL-52
+ .5% FL-25 + 8#/sx Gilsonite followed by 75sx Cl C with .7%
FL-25. Estimated top of cement is 8300'.

Note: Cement volumes may need to be adjusted to hole caliper.

MUD: 0 - 600' Fresh water/native mud. Lime for pH control
(9-10). Paper for seepage.
Wt 8.7-9.2 ppg, Vis 32-34 sec

600' - 3000' Fresh/*Brine water. Lime for pH control (10.0-
10.5). Paper for seepage.
Wt 8.3-9.0/10.0-10.1ppg, Vis 28-29 sec
*Fresh water will be used unless chlorides in
the mud system increases to 20000PPM.

3000' - 8300' Fresh water. Lime for pH control(9-9.5). Paper
for seepage.
Wt 8.3-8.5 ppg, Vis 28-29 sec

8300' - 10000' Cut brine. Lime for pH control (10-10.5).
Wt 9.6-10.0 ppg, Vis 28-29sec

10000' - 11400' Mud up with an Duo Vis/Flo Trol mud system.
Wt 9.6-10.0ppg, Vis 32-36sec, WL<10cc

DISTRICT I
1825 N. French Dr., Hobbs, NM 88240

DISTRICT II
811 South First, Artesia, NM 88210

DISTRICT III
1000 Rio Brazos Rd., Aztec, NM 87410

DISTRICT IV
2040 South Pacheco, Santa Fe, NM 87505

State of New Mexico
Energy, Minerals and Natural Resources Department

Form C-102
Revised March 17, 1999

Submit to Appropriate District Office
State Lease - 4 Copies
Fee Lease - 3 Copies

OIL CONSERVATION DIVISION

2040 South Pacheco
Santa Fe, New Mexico 87504-2088

☐ AMENDED REPORT

WELL LOCATION AND ACREAGE DEDICATION PLAT

API Number 30-015-	Pool Code 70920	Pool Name Undesignated Avalon Morrow
Property Code	Property Name OXY UNCLE BEN STATE	Well Number 1
OGRID No. 16696	Operator Name OXY USA INC.	Elevation 3232'

Surface Location

UL or lot No. K	Section 21	Township 20 S	Range 27 E	Lot Idn	Feet from the 1980	North/South line SOUTH	Feet from the 1980	East/West line WEST	County EDDY
--------------------	---------------	------------------	---------------	---------	-----------------------	---------------------------	-----------------------	------------------------	----------------

Bottom Hole Location If Different From Surface

UL or lot No.	Section	Township	Range	Lot Idn	Feet from the	North/South line	Feet from the	East/West line	County
Dedicated Acres 320	Joint or Infill N	Consolidation Code	Order No.						

NO ALLOWABLE WILL BE ASSIGNED TO THIS COMPLETION UNTIL ALL INTERESTS HAVE BEEN CONSOLIDATED
OR A NON-STANDARD UNIT HAS BEEN APPROVED BY THE DIVISION

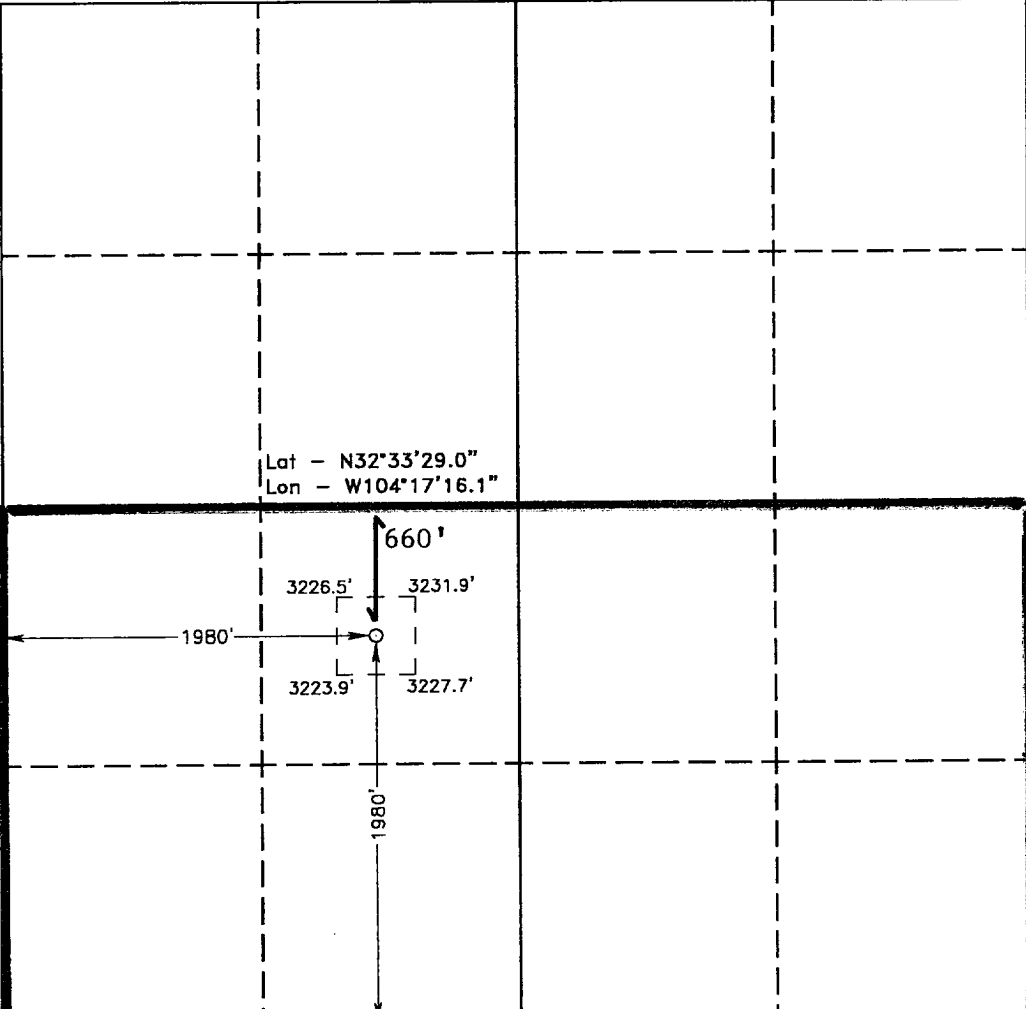

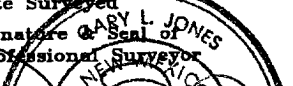
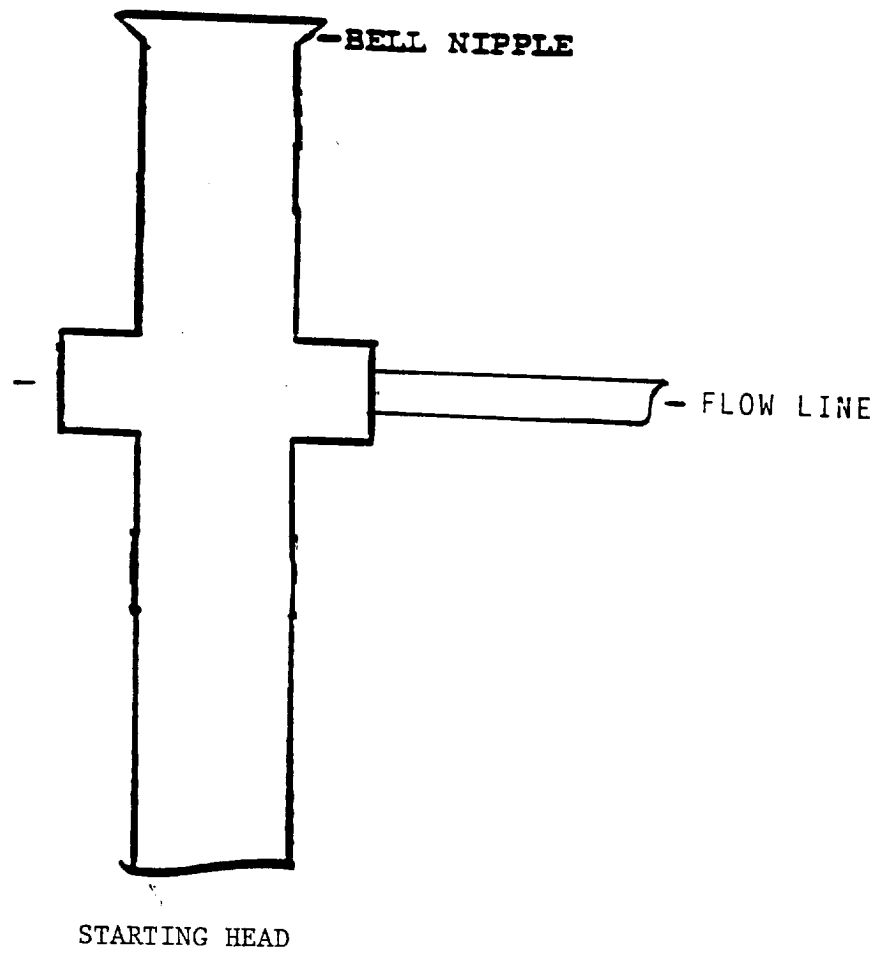
	OPERATOR CERTIFICATION I hereby certify the the information contained herein is true and complete to the best of my knowledge and belief.  Signature David Stewart Printed Name Regulatory Analyst Title 1/15/01 Date
	SURVEYOR CERTIFICATION I hereby certify that the well location shown on this plat was plotted from field notes of actual surveys made by me or under my supervision, and that the same is true and correct to the best of my belief. January 10, 2001 Date Surveyed  Signature & Seal of Professional Surveyor NEW MEXICO W.S. No. 1009A Certificate No. Gary L. Jones 7977 BASIN SURVEYS

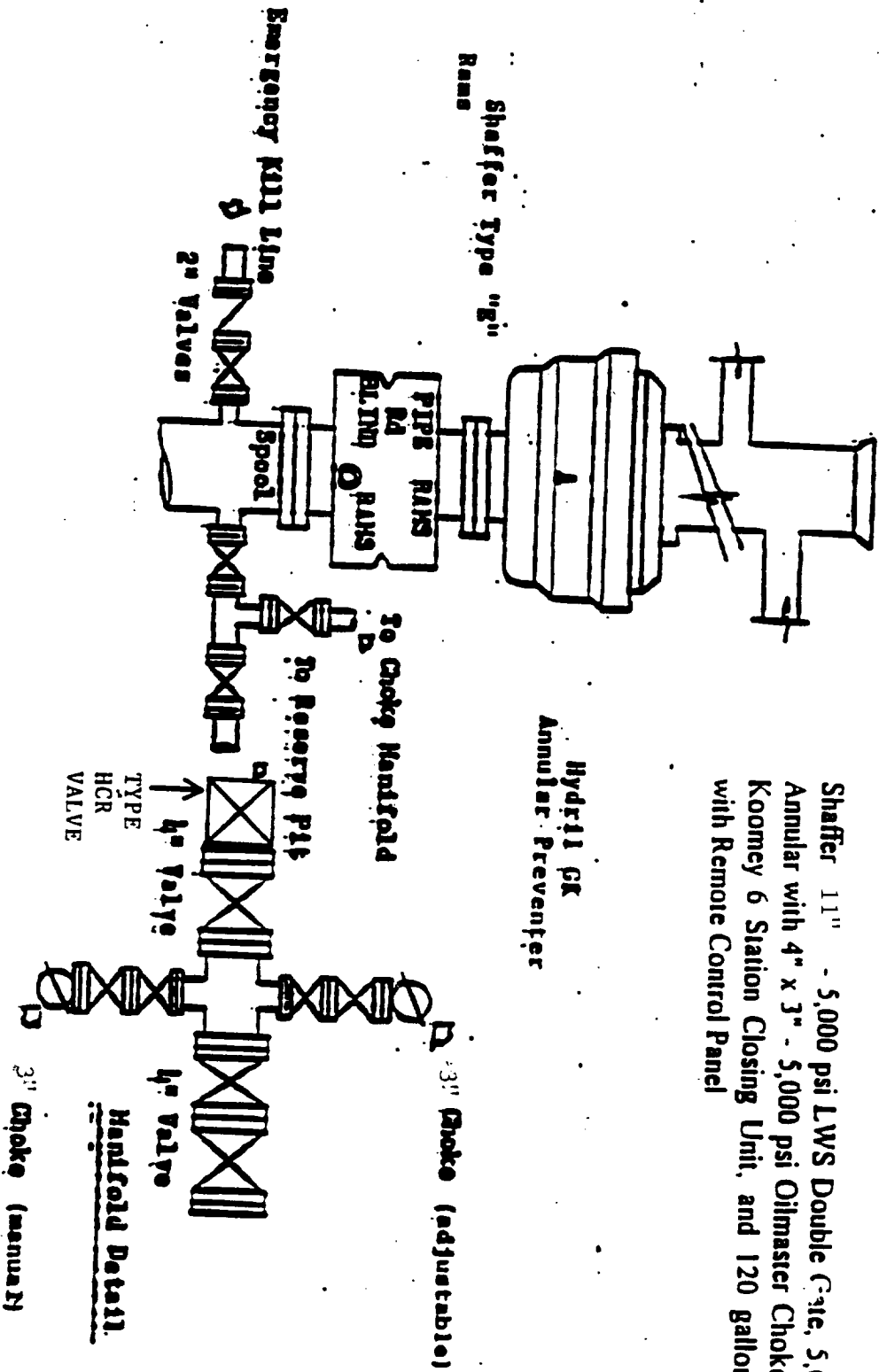
EXHIBIT A

ANNULAR PREVENTOR
TO BE USED AS DIVERTOR ONLY



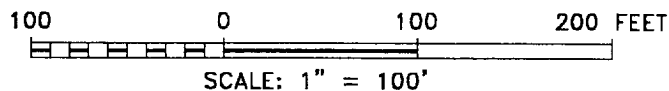
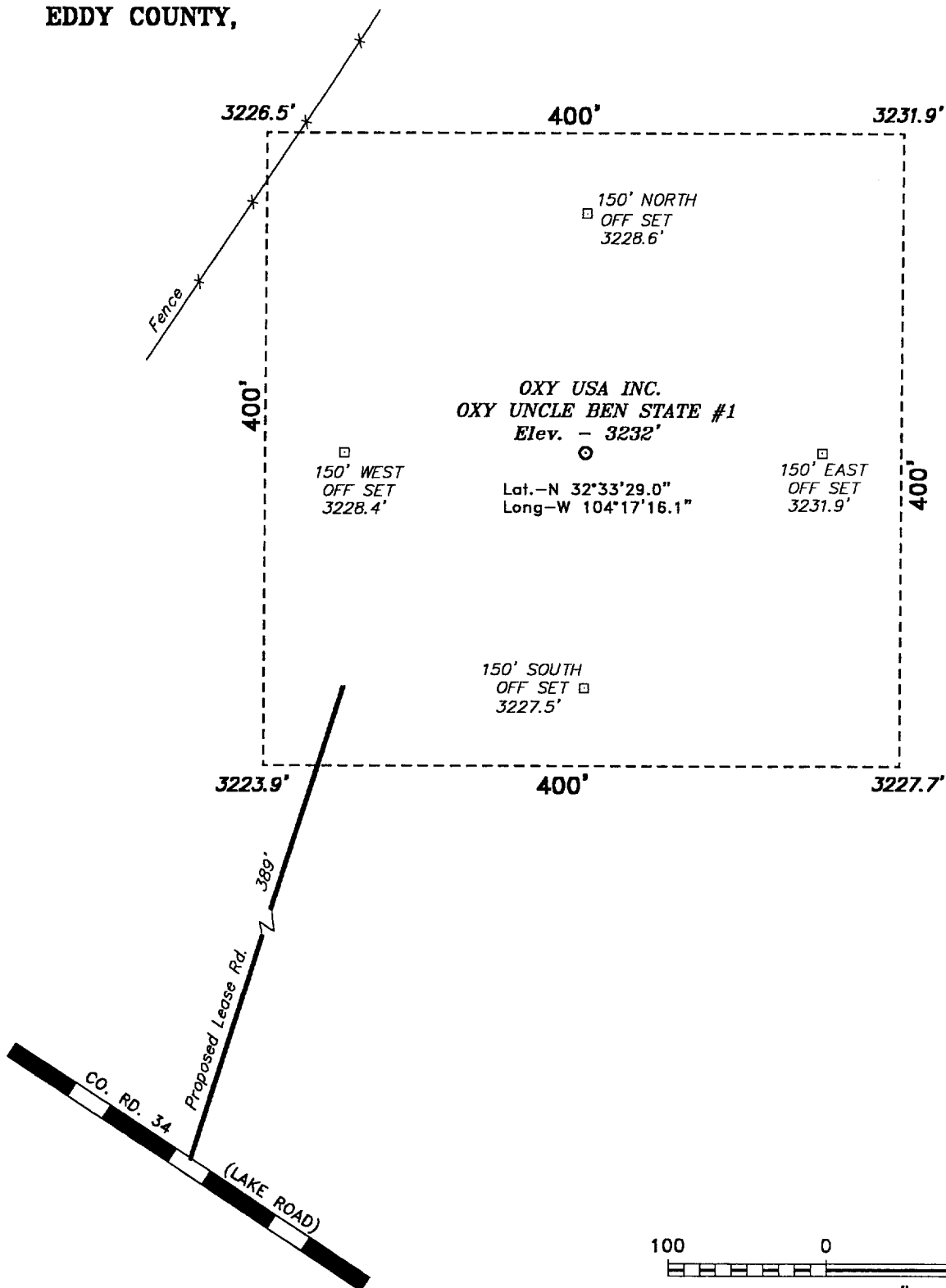
BLOWOUT PREVENTOR SCHEMATIC

EXHIBIT A



Shaffer 11" - 5,000 psi LWS Double Gate, 5,000 psi Shaffer Annular with 4" x 3" - 5,000 psi Oilmaster Choke Manifold and Koomey 6 Station Closing Unit, and 120 gallon Accumulator with Remote Control Panel

SECTION 21, TOWNSHIP 20 SOUTH, RANGE 27 EAST, N.M.P.M.,
EDDY COUNTY, NEW MEXICO.



Directions to Location:

FROM THE JUNCTION OF CO. RD. 206 (ILLINOIS CAMP RD.) AND CO. RD. 34 (LAKE ROAD), GO NORTHWEST ON CO. RD. 34 APPROX. 5.0 MILES TO THE PROPOSED LEASE ROAD WHICH LIES 389 FEET SOUTH OF THE SOUTHWEST CORNER OF THE PROPOSED WELL PAD.

BASIN SURVEYS P.O. BOX 1786-HOBBS, NEW MEXICO

W.O. Number: 1001 Drawn By: **K. GOAD**

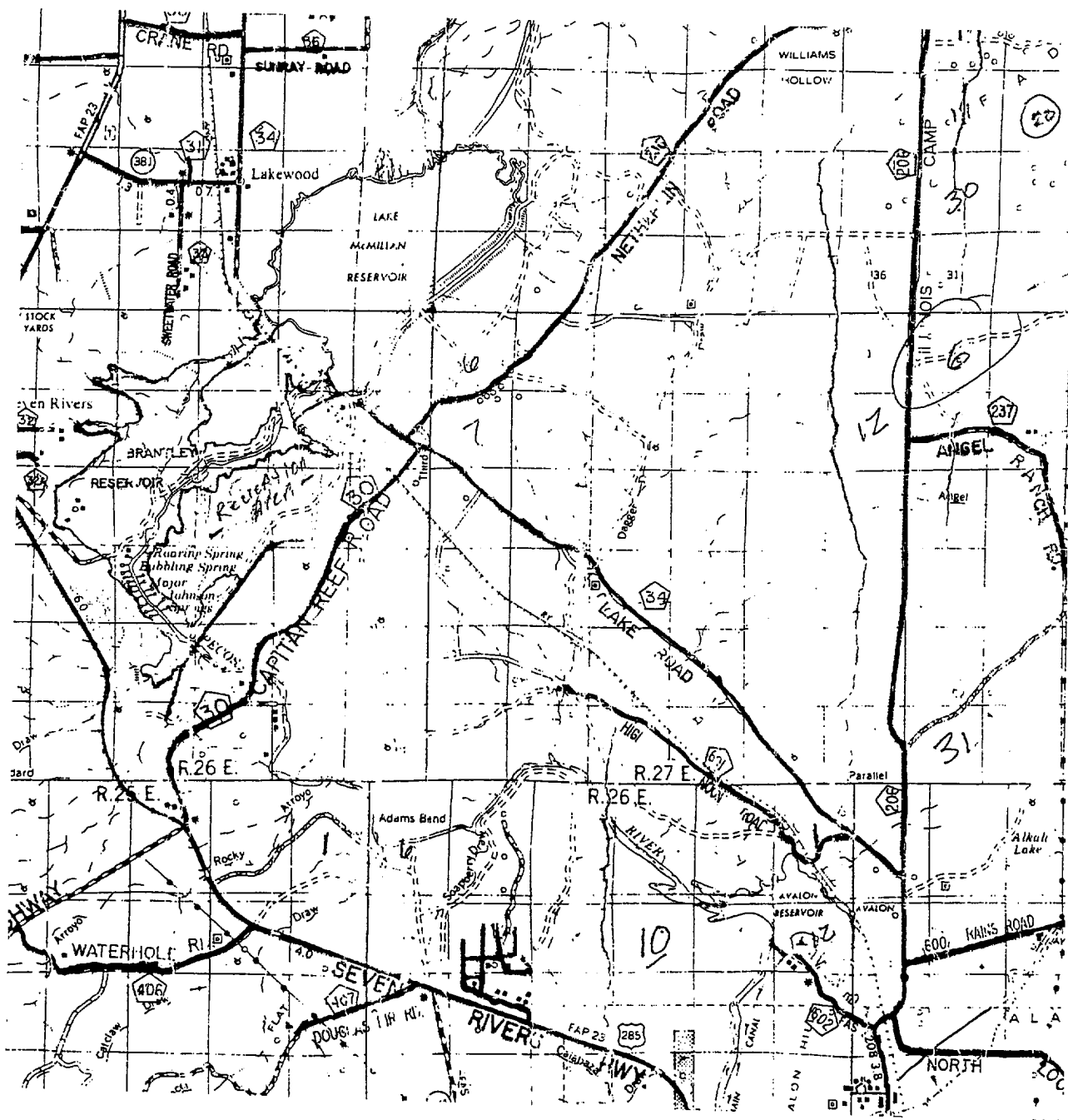
Date: 01-11-2001 Disk: KJG CD#3 - 1001A.DWG

Oxy USA Inc.

REF: Oxy Uncle Ben State No. 1 / Well Pad Topo

THE OXY UNCLE BEN STATE No. 1 LOCATED 1980' FROM THE SOUTH LINE AND 1980' FROM THE WEST LINE OF SECTION 21, TOWNSHIP 20 SOUTH, RANGE 27 EAST, N.M.P.M., EDDY COUNTY, NEW MEXICO.

Survey Date: 01-10-2001 Sheet 1 of 1 Sheets



OXY UNCLE BEN STATE #1

Located at 1980' FSL and 1980' FWL

Section 21, Township 20 South, Range 27 East,
N.M.P.M., Eddy County, New Mexico.



focused on excellence
in the oilfield

P.O. Box 1786
1120 N. West County Rd.
Hobbs, New Mexico 88241
(505) 393-7316 - Office
(505) 392-3074 - Fax
basinsurveys.com

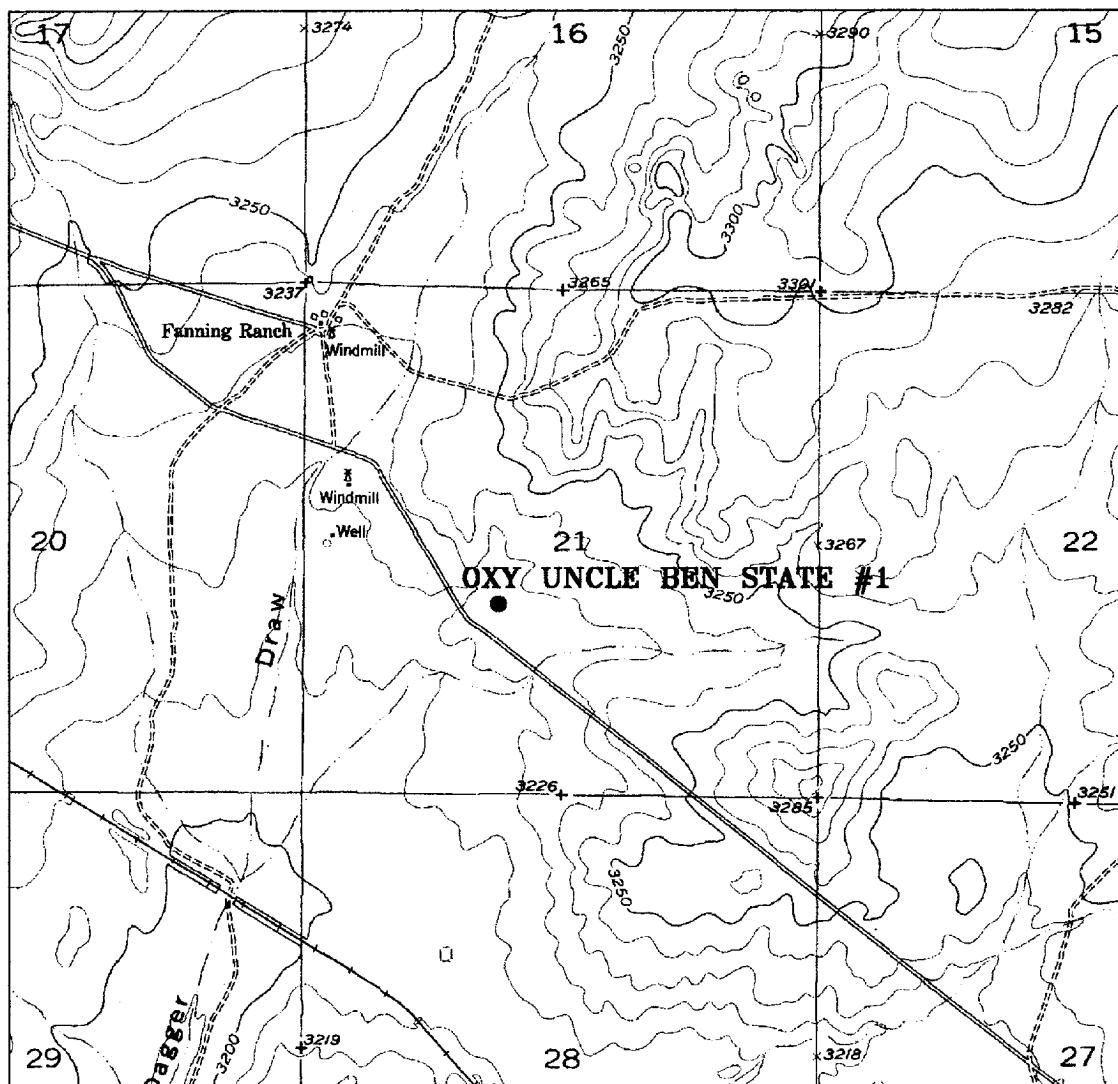
W.O. Number: 1001AA - KJG CD#3

Survey Date: 01-10-2001

Scale: 1" = 2 MILES

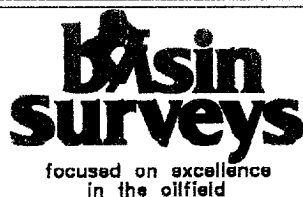
Date: 01-11-2001

OXY USA INC.



OXY UNCLE BEN STATE #1

Located at 1980' FSL and 1980' FWL
 Section 21, Township 20 South, Range 27 East,
 N.M.P.M., Eddy County, New Mexico.



P.O. Box 1786
 1120 N. West County Rd.
 Hobbs, New Mexico 88241
 (505) 393-7316 - Office
 (505) 392-3074 - Fax
 basin-surveys.com

W.O. Number: 1001AA - KJG CD#3

Survey Date: 01-10-2001

Scale: 1" = 2000'

Date: 01-11-2001

OXY USA INC.