

1625 N. French Dr., Hobbs, NM 88240
District II
811 South First, Artesia, NM 88210
District III
1000 Rio Brazos Road, Aztec, NM 87410
District IV
2040 South Pacheco, Santa Fe, NM 87505

State of New Mexico
Energy Minerals and Natural Resources

Oil Conservation Division
2040 South Pacheco
Santa Fe, NM 87505

Form C-101
Revised March 17, 1999

Submit to appropriate District Office
State Lease - 6 Copies
Fee Lease - 5 Copies

RECEIVED
OCD - ARTESIA

☐ AMENDED REPORT

APPLICATION FOR PERMIT TO DRILL, RE-ENTER, DEEPEN, PLUGBACK, OR ADD A ZONE

Operator Name and Address POGO PRODUCING COMPANY P.O. BOX 10340 MIDLAND, TEXAS 79702-4345		OGRID Number 17891
Property Code 26401	Property Name LOST TANK 35 th STATE	API Number 30-015-31608
		Well No. 3

Surface Location

UL or lot no.	Section	Township	Range	Lot 1/4	Feet from the	North/South line	Feet from the	East/West line	County
N	35	21S	31E		330'	South	2030'	West	EDDY

Proposed Bottom Hole Location If Different From Surface

UL or lot no.	Section	Township	Range	Lot 1/4	Feet from the	North/South line

R-III-P

Proposed Pool 1 LOST TANK DELAWARE (40299)

NOTIFY OCD SPUD & TIME TO WITNESS
CEMENTING OF ALL CASING STRINGS

Work Type Code N	Well Type Code O	Cable/Rotary ROTARY	Lease Type Code S	Ground Level Elevation 3522'
Multiple NO	Proposed Depth 8500'	Formation DELAWARE	Contractor UNKNOWN	Spud Date WHEN APPROVED

Proposed Casing and Cement Program

Hole Size	Casing Size	Casing weight/foot	Setting Depth	Sacks of Cement	Estimated TOC
25"	20"	NA	40'	Redi-mix	SURFACE
17 1/2"	13 3/8"	48	800'	800 Sx.	SURFACE
11"	8 5/8"	32	4200'	1500 Sx	SURFACE
7 7/8"	5 1/2"	17 & 15.5	8500'	1650 Sx.	SURFACE

Describe the proposed program. If this application is to DEEPEN or PLUG BACK, give the data on the present productive zone and proposed new productive zone.
Describe the blowout prevention program, if any. Use additional sheets if necessary.

1. Drill 25" hole to 40'. Set 40' of 20" conductor pipe and cement to surface with Redi-mix.
2. Drill 17 1/2" hole to 800'. Run and set 800' of 13 3/8" 48# H-40 ST&C casing. Cement with 800 Sx. of Class "C" cement + 2% CaCl + 1/4# Floccle/Sx. circulate cement.
3. Drill 11" hole to 4200'. Run and set 4200' of 8 5/8" 32# J-55 ST&C casing. Cement with 1500 Sx. of Class "C" cement + 2% CaCl + 1/4# Floccle/Sx. circulate cement.
4. Drill 7 7/8" hole to 8500'. Run and set 5 1/2" casing as follows: 2500' of 5 1/2" 17# J-55 LT&C, 5000' of 5 1/2" 15.5# J-55 LT&C, 1000' of 5 1/2" 17# J-55 LT&C. Cement in 3 stages, DV tools set at 6100'± & 3700'±. Cement 1st stage with 650 Sx. of Class "H" cement + additives, 2nd stage with 600 Sx. of Class "C" + additives, 3rd stage with 400 Sx. of Class "C" + additives, Circulate cement to surface.

I hereby certify that the information given above is true and complete to the best of my knowledge and belief.

Signature:

Printed name: Joe T. Janica

Title: Agent

Date: 01/18/01

Phone: 505-391-8503

OIL CONSERVATION DIVISION

Approved by:

ORIGINAL SIGNED BY TIM W. GUM
DISTRICT II SUPERVISOR

Title:

Approval Date:

FEB 14 2001

Expiration Date:

FEB 14 2002

Conditions of Approval:

OPERATOR CERTIFICATION

I hereby certify the the information contained herein is true and complete to the best of my knowledge and belief.

Joe T Janica

Signature

Joe T Janica

Printed Name

Agent

Title

01/18/01

Date

SURVEYOR CERTIFICATION

I hereby certify that the well location shown on this plat was plotted from field notes of actual surveys made by me or under my supervision, and that the same is true and correct to the best of my belief.

JANUARY 06, 2001

Date Surveyed

AWB

Signature & Seal of Professional Surveyor

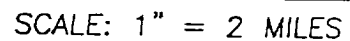
Ronald J. Kidson

01/16/01

00-11-1626

Certificate No.: RONALD J. KIDSON 3239

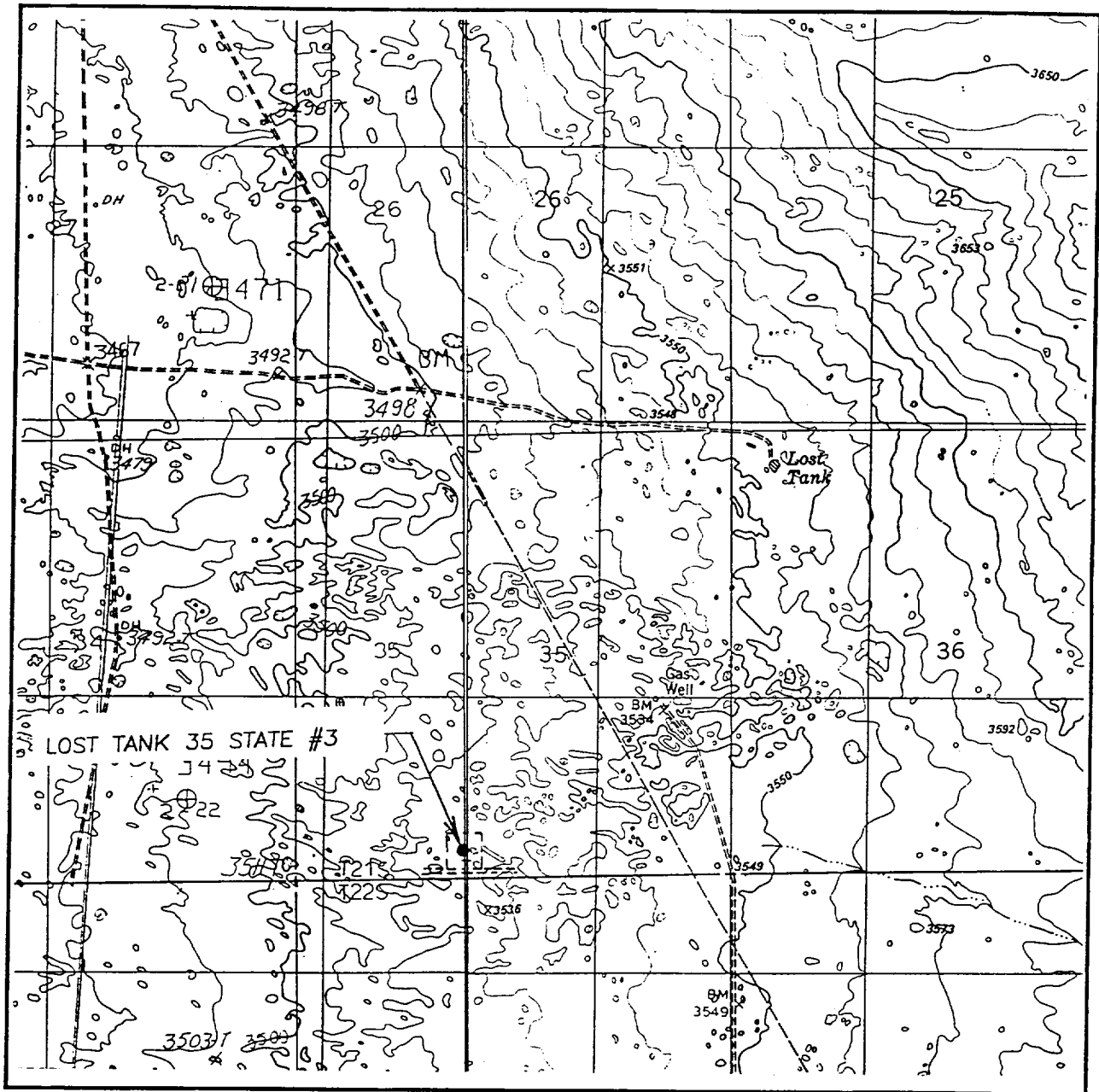
GARY KIDSON 12641



LEASE _____ LOST TANK 35 STATE

JOHN WEST SURVEYING
HOBBS, NEW MEXICO
(505) 393-3117

LOCATION VERIFICATION MAP



SCALE: 1" = 2000'

CONTOUR INTERVAL: 10'

SEC. 35 TWP. 21-S RGE. 31-E

THE DIVIDE, LIVINGSTON RIDGE, N.M.

SURVEY N.M.P.M.

COUNTY EDDY

DESCRIPTION 330' FSL & 2030' FWL

ELEVATION 3522

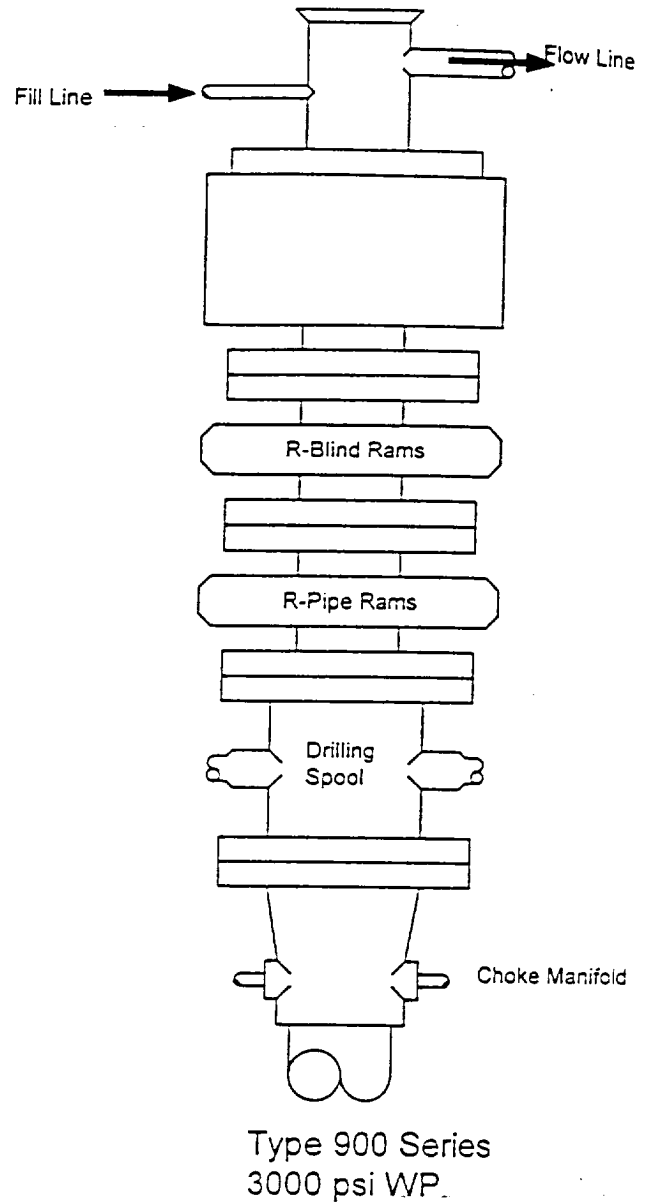
OPERATOR POGO PRODUCING COMPANY

LEASE LOST TANK 35 STATE

U.S.G.S. TOPOGRAPHIC MAP

THE DIVIDE, LIVINGSTON RIDGE, N.M.

JOHN WEST SURVEYING
HOBBS, NEW MEXICO
(505) 393-3117



Choke Manifold Assembly for 3M WP System

