

District I
PO Box 1980, Hobbs, NM 88241-1980

District II
811 South First, Artesia, NM 88210

District III
1000 Rio Brazos Rd., Aztec, NM 87410

District IV
2040 South Pacheco, Santa Fe, NM 87505

State of New Mexico
Energy, Minerals & Natural Resources Department

OIL CONSERVATION DIVISION
2040 South Pacheco
Santa Fe, NM 87505

Form C-101
Revised October 18, 1994
Instructions on back
Submit to Appropriate District Office
State Lease - 6 Copies
Fee Lease - 5 Copies

☐ AMENDED REPORT

APPLICATION FOR PERMIT TO DRILL, RE-ENTER, DEEPEN, PLUGBACK, OR ADD A ZONE

1Operator Name and Address Pogo Producing Company P. O. Box 10340 Midland, TX 79702-7340		2OGRID Number 017891
		3API Number 30 - 0 15-31608
4Property Code 26401	5Property Name Lost Tank 35 State	6Well No. 3

7Surface Location

UL or lot no.	Section	Township	Range	Lot Idn	Feet from the	North/South line	Feet from the	East/West Line	County
N	35	21S	31E		330	South	2030	West	Eddy

8Proposed Bottom Hole Location

UL or lot no.	Section	Township	Range	Lot Idn	Feet from the	County
9Proposed Pool 1 Lost Tank Delaware (40299)						

**NOTIFY OCD SPUD & TIME
TO WITNESS CEMENTING OF
ALL CASING STRINGS**

11Work Type Code N	12Well Type Code O	13Cable/Rotary R	14Lease Type Code S	15Ground Level Elevation 3522
16Multiple No	17Proposed Depth 8500	18Formation Delaware	19Contractor Unknown	20Spud Date

21Proposed Casing and Cement Program

Hole Size	Casing Size	Casing weight/foot	Setting Depth	Sacks of Cement	Estimated TOC
25"	20"	NA	40'	Redi-mix	Surface
17-1/2"	13-3/8"	48#	800'	800 sks	Surface
11"	8-5/8"	32#	4200'	1500 sks	Surface
7-7/8"	5-1/2"	17# & 15.5#	8500'	1650 sks	Surface

Operator To drill no more than 200' below base of Delaware

22Describe the proposed program. If this application is to DEEPEN or PLUG BACK give the data on the present productive zone and proposed new productive zone. Describe the blowout prevention program, if any. Use additional sheets if necessary.

1. Drill 25" hole to 40'. Set 40' of 20" conductor pipe & cement to surface w/ redi-mix.
2. Drill 17-1/2" hole to 800'. Run & set 800' of 13-3/8" 48# H-40 ST&C csg. Cement w/ 800 sks CI "C" cement + 2% CaCl + 1/4# Flocele/sx. Circulate cement.
3. Drill 11" hole to 4200'. Run & set 4200' of 8-5/8" 32# J-55 ST&C csg. Cement w/ 1500 sks CI "C" cement + 2% CaCl + 1/4# Flocele/sx. Circulate cement.
4. Drill 7-7/8" hole to 8500'. Run & set 5-1/2" csg as follows: 2500' of 5-1/2" 17# J-55 LT&C, 5000' of 5-1/2" 15.5# J-55 LT&C, 1000' of 5-1/2" 17# J-55 LT&C. Cement in 3 stages, DV tools set @ 6100'± & 3700'±. Cement 1st stage w/ 650 sks CI "H" cement + additives, 2nd stage w/ 600 sks CI "C" + additives, 3rd stage w/ 400 sks CI "C" + additives. Circ cmt to surface

23I hereby certify that the information given above is true and complete to the best of my knowledge and belief.

Signature:

Cathy Tomberlin

Printed name: Cathy Tomberlin

Title: Sr. Operation Tech

Date: 03-27-02

Phone: 915-685-8100

Approved By:

OIL CONSERVATION DIVISION

ORIGINAL SIGNED BY TIM W. GUM

DISTRICT II SUPERVISOR

Title:

Approval Date: APR 02 2002

Expiration Date: APR 02 2003

Conditions of Approval:

Attached: ☐

DISTRICT I

P.O. Box 1980, Hobbs, NM 88241-1980

State of New Mexico

Energy, Minerals and Natural Resources Department

Form C-102

Revised February 10, 1994

Submit to Appropriate District Office

State Lease - 4 Copies

Fee Lease - 3 Copies

DISTRICT II

P.O. Drawer DD, Artesia, NM 88211-0719

OIL CONSERVATION DIVISION

P.O. Box 2088

Santa Fe, New Mexico 87504-2088

DISTRICT III

1000 Rio Brazos Rd., Artec, NM 87410

DISTRICT IV

P.O. BOX 2088, SANTA FE, N.M. 87504-2088

WELL LOCATION AND ACREAGE DEDICATION PLAT

☐ AMENDED REPORT

API Number	Pool Code 40299	Pool Name LOST TANK - DELAWARE
Property Code 26401	Property Name LOST TANK 35 STATE	Well Number 3
OGRID No. 17891	Operator Name POGO PRODUCING COMPANY	Elevation 3522

Surface Location

UL or lot No. N	Section 35	Township 21-S	Range 31-E	Lot Idn	Feet from the 330	North/South line SOUTH	Feet from the 2030	East/West line WEST	County EDDY
--------------------	---------------	------------------	---------------	---------	----------------------	---------------------------	-----------------------	------------------------	----------------

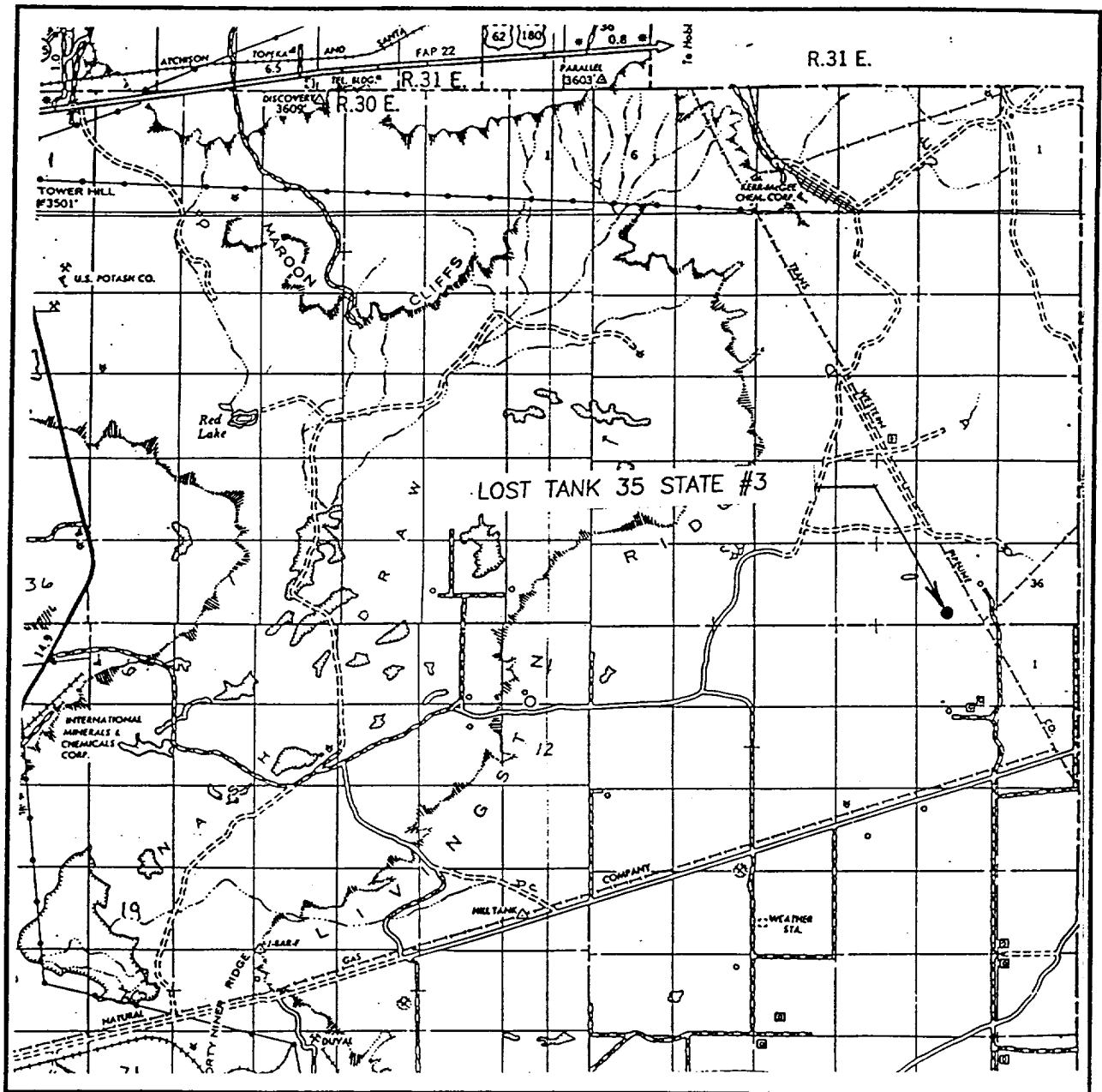
Bottom Hole Location If Different From Surface

UL or lot No.	Section	Township	Range	Lot Idn	Feet from the	North/South line	Feet from the	East/West line	County
Dedicated Acres 40	Joint or Infill	Consolidation Code	Order No.						

NO ALLOWABLE WILL BE ASSIGNED TO THIS COMPLETION UNTIL ALL INTERESTS HAVE BEEN CONSOLIDATED
OR A NON-STANDARD UNIT HAS BEEN APPROVED BY THE DIVISION

	OPERATOR CERTIFICATION I hereby certify the the information contained herein is true and complete to the best of my knowledge and belief. Signature Joe T. Janica Printed Name Agent Title 01/18/01 Date	
	SURVEYOR CERTIFICATION I hereby certify that the well location shown on this plat was plotted from field notes of actual surveys made by me or under my supervision, and that the same is true and correct to the best of my belief. JANUARY 06, 2001 Date Surveyed Signature & Seal of Professional Surveyor 00-11-1626 Certificate No.: RONALD J. KIDSON 3239 PROFESSIONAL SURVEYOR GARY KIDSON 12641	
	Signature & Seal of Professional Surveyor Signature & Seal of Professional Surveyor Signature & Seal of Professional Surveyor Signature & Seal of Professional Surveyor	
	Signature & Seal of Professional Surveyor Signature & Seal of Professional Surveyor Signature & Seal of Professional Surveyor Signature & Seal of Professional Surveyor	

VICINITY MAP



SCALE: 1" = 2 MILES

SEC. 35 TWP. 21-S RGE. 31-E

SURVEY N.M.P.M.

COUNTY EDDY

DESCRIPTION 330'FSL & 2030'FWL

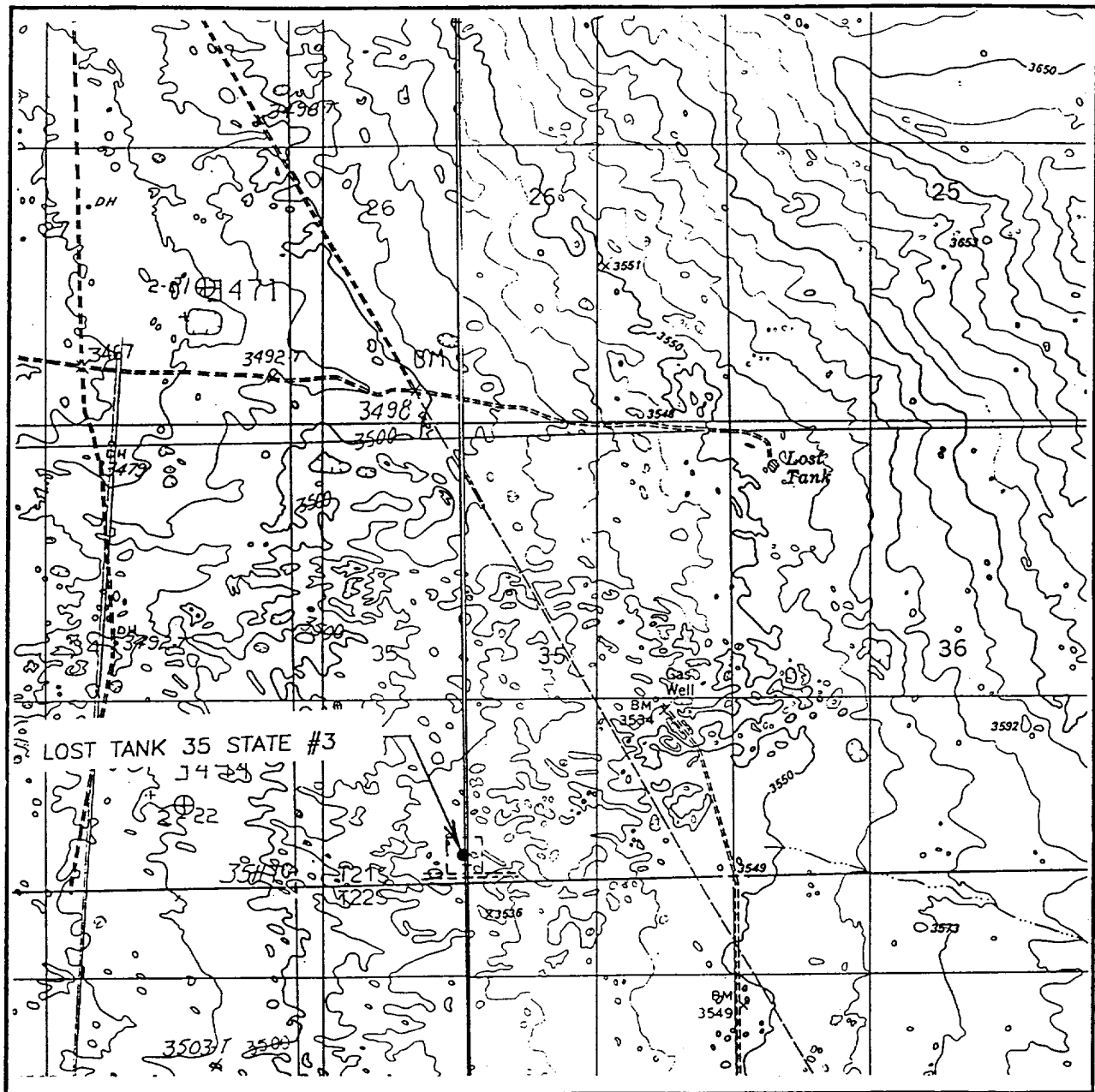
ELEVATION 3522

OPERATOR POGO PRODUCING COMPANY

LEASE LOST TANK 35 STATE

JOHN WEST SURVEYING
HOBBS, NEW MEXICO
(505) 393-3117

LOCATION VERIFICATION MAP



SCALE: 1" = 2000'

CONTOUR INTERVAL: 10'

THE DIVIDE, LIVINGSTON RIDGE, N.M.

SEC. 35 TWP. 21-S RGE. 31-E

SURVEY N.M.P.M.

COUNTY EDDY

DESCRIPTION 330' FSL & 2030' FWL

ELEVATION 3522

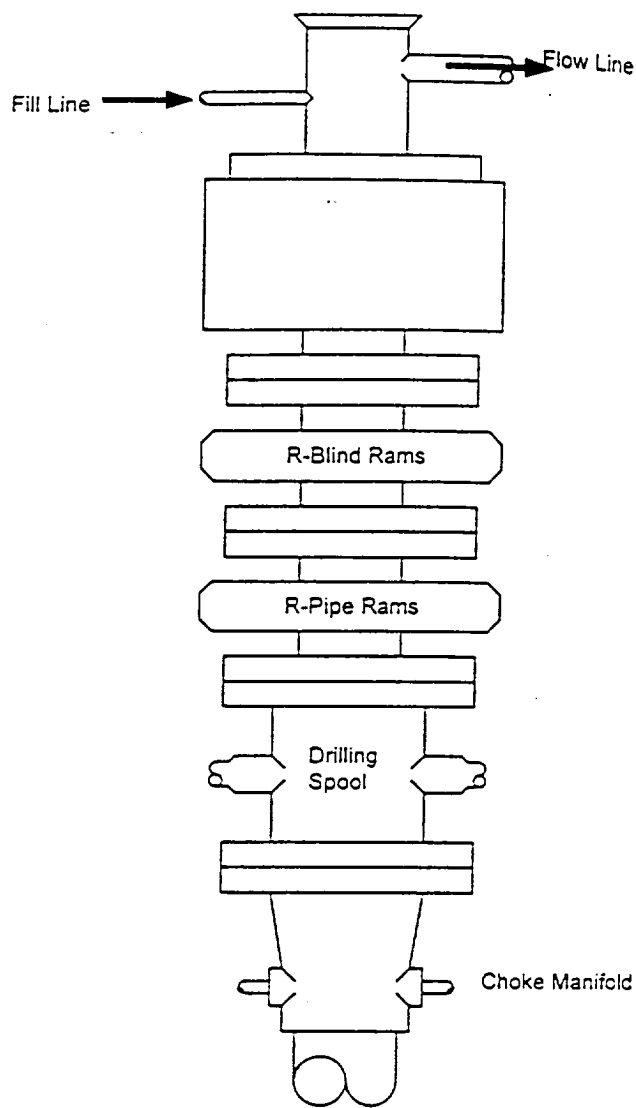
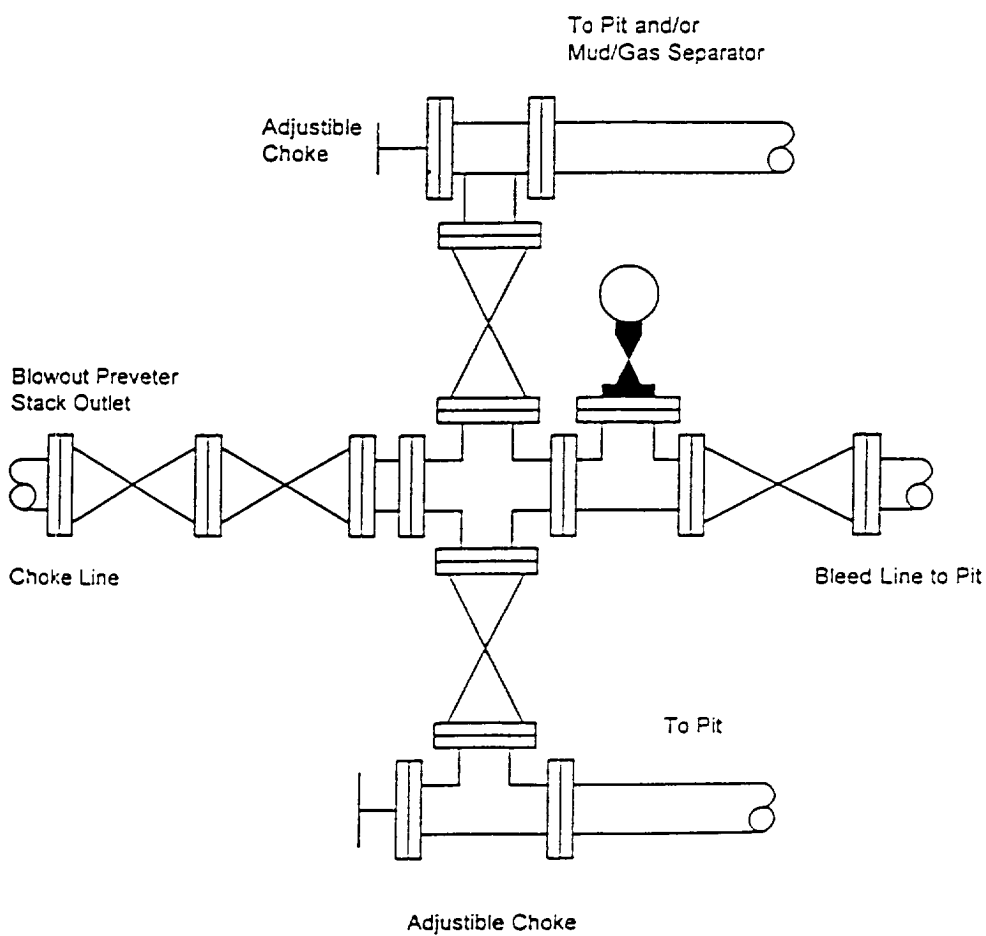
OPERATOR POGO PRODUCING COMPANY

LEASE LOST TANK 35 STATE

U.S.G.S. TOPOGRAPHIC MAP
THE DIVIDE, LIVINGSTON RIDGE, N.M.

JOHN WEST SURVEYING
HOBBS, NEW MEXICO
(505) 393-3117

Choke Manifold Assembly for 3M WP System



Type 900 Series
3000 psi WP