

District I
1625 N. French Dr., Hobbs, NM 88240
District II
811 South First, Artesia, NM 88210
District III
1000 Rio Brazos Road, Aztec, NM 87410
District IV
2040 South Pacheco, Santa Fe, NM 87505

State of New Mexico
Energy Minerals and Natural Resources

Oil Conservation Division
2040 South Pacheco
Santa Fe, NM 87505

Form C-101
Revised March 17, 1999

Submit to appropriate District Office
State Lease - 6 Copies
Fee Lease - 5 Copies

☐ AMENDED REPORT

APPLICATION FOR PERMIT TO DRILL, RE-ENTER, DEEPEN, PLUGBACK, OR ADD A ZONE

¹ Operator Name and Address OXY USA WTP Limited Partnership P.O. Box 50250 Midland, TX 79710-0250		² OGRID Number 192463
		³ API Number 30-015-31820
³ Property Code 28093	⁵ Property Name OXY Clarabell State	⁶ Well No. 1

7 Surface Location

UL or lot no.	Section	Township	Range	Lot Idn	Feet from the	North/South line	Feet from the	East/West line	County
I	27	20S	27E		1980	South	660	East	Eddy

8 Proposed Bottom Hole Location If Different From Surface

UL or lot no.	Section	Township	Range	Lot Idn	Feet from the	North/South line	Feet from the	East/West line	County
⁹ Proposed Pool 1 Avalon Morrow					¹⁰ Proposed Pool 2 70920				

¹¹ Work Type Code N	¹² Well Type Code G	¹³ Cable/Rotary R	¹⁴ Lease Type Code S V-2394	¹⁵ Ground Level Elevation 3272'
¹⁶ Multiple No	¹⁷ Proposed Depth 11000'	¹⁸ Formation Morrow	¹⁹ Contractor UTI	²⁰ Spud Date 7/2/01

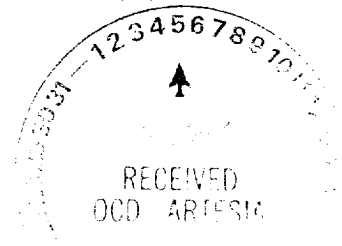
21 Proposed Casing and Cement Program

Hole Size	Casing Size	Casing weight/foot	Setting Depth	Sacks of Cement	Estimated TOC
17-1/2"	13-3/8"	48#	600'	550	Surface
12-1/4"	9-5/8"	36#	3000'	850	Surface
8-3/4"	5-1/2"	17#	11000'	775	8300'

22 Describe the proposed program. If this application is to DEEPEN or PLUG BACK, give the data on the present productive zone and proposed new productive zone. Describe the blowout prevention program, if any. Use additional sheets if necessary.

NOTIFY OCD SPUD & TIME TO WITNESS
CEMENTING OF 5/8" CASING STRING

SEE OTHER SIDE



23 I hereby certify that the information given above is true and complete to the best of my knowledge and belief.

Signature:

David Stewart

Printed name: David Stewart

Title: Regulatory Analyst

Date: 6/4/01

Phone: 915-685-5717

OIL CONSERVATION DIVISION

Approved by:

ORIGINAL SIGNED BY TIM W. GUN
DISTRICT II SUPERVISOR

Title:

Approval Date: JUN 05 2001

Expiration Date:

JUN 05 2002

Conditions of Approval:

Attached ☐

OXY Clarabell State #1
1980 FSL 660 FEL SEC 27 T20S R27E Eddy County, NM
State Lease No. V-2394

PROPOSED TD: 11000' TVD

BOP PROGRAM: 0'-600' None

600'-3000' 13-5/8" 3M annular preventer.

3000'-11000' 11" 5M blind pipe rams with 5M annular preventer
and rotating head below 8300'.

CASING: Surface: 13-3/8" OD 48# H40 ST&C new casing set at 600'
17-1/2" hole

Intermediate: 9-5/8" OD 36# K55 ST&C new casing from 0-3000'
12-1/4" hole

Production: 5-1/2" OD 17# N80-S95 LT&C new casing from 0-11000'
8-3/4" hole

CEMENT: Surface - Circulate cement with 350sx 35:65 POZ/C with 6% Bentonite
+ 2% CaCl₂ + .25#/sx Cello-Seal followed by 200sx Cl C with 2% CaCl₂.

Intermediate - Circulate cement with 650sx 35:65 POZ/C with 6%
Bentonite + 2% CaCl₂ + .25#/sx Cello-Seal followed by 200sx Cl C
with 2% CaCl₂.

Production - Cement with 700sx 15:61:11 POZ/C/CSE with .5% FL-52
+ .5% FL-25 + 8#/sx Gilsonite followed by 75sx Cl C with .7%
FL-25. Estimated top of cement is 8300'.

Note: Cement volumes may need to be adjusted to hole caliper.

MUD: 0-600' Fresh water/native mud. Lime for pH control
(9-10). Paper for seepage.
Wt 8.7-9.2 ppg, Vis 32-34 sec

600'-3000' Fresh/*Brine water. Lime for pH control (10.0-
10.5). Paper for seepage.
Wt 8.3-9.0/10.0-10.1ppg, Vis 28-29 sec
*Fresh water will be used unless chlorides in
the mud system increases to 20000PPM.

3000'-8300' Fresh water. Lime for pH control(9-9.5). Paper
for seepage.
Wt 8.3-8.5 ppg, Vis 28-29 sec

8300'-9800' Cut brine. Lime for pH control (10-10.5).
Wt 9.6-10.0 ppg, Vis 28-29sec

9800'-11000' Mud up with an Duo Vis/Flo Trol mud system.
Wt 9.6-10.0ppg, Vis 32-36sec, WL<10cc

DISTRICT I
1825 N. French Dr., Hobbs, NM 88240

DISTRICT II
811 South First, Artesia, NM 88210

DISTRICT III
1000 Rio Brazos Rd., Aztec, NM 87410

DISTRICT IV
2040 South Pacheco, Santa Fe, NM 87505

State of New Mexico
Energy, Minerals and Natural Resources Department

Form C-102
Revised March 17, 1999

Submit to Appropriate District Office
State Lease - 4 Copies
Fee Lease - 3 Copies

OIL CONSERVATION DIVISION

2040 South Pacheco
Santa Fe, New Mexico 87504-2088

☐ AMENDED REPORT

WELL LOCATION AND ACREAGE DEDICATION PLAT

API Number 30-015-	Pool Code 70920	Pool Name Avalon Morrow
Property Code	Property Name OXY CLARABELL STATE	Well Number 1
OGRID No. 630555	Operator Name OXY USA WTP Limited Partnership	Elevation 3272

Surface Location

UL or lot No. 1	Section 27	Township 20 S	Range 27 E	Lot Idn	Feet from the 1980'	North/South line SOUTH	Feet from the 660'	East/West line EAST	County EDDY
--------------------	---------------	------------------	---------------	---------	------------------------	---------------------------	-----------------------	------------------------	----------------

Bottom Hole Location If Different From Surface

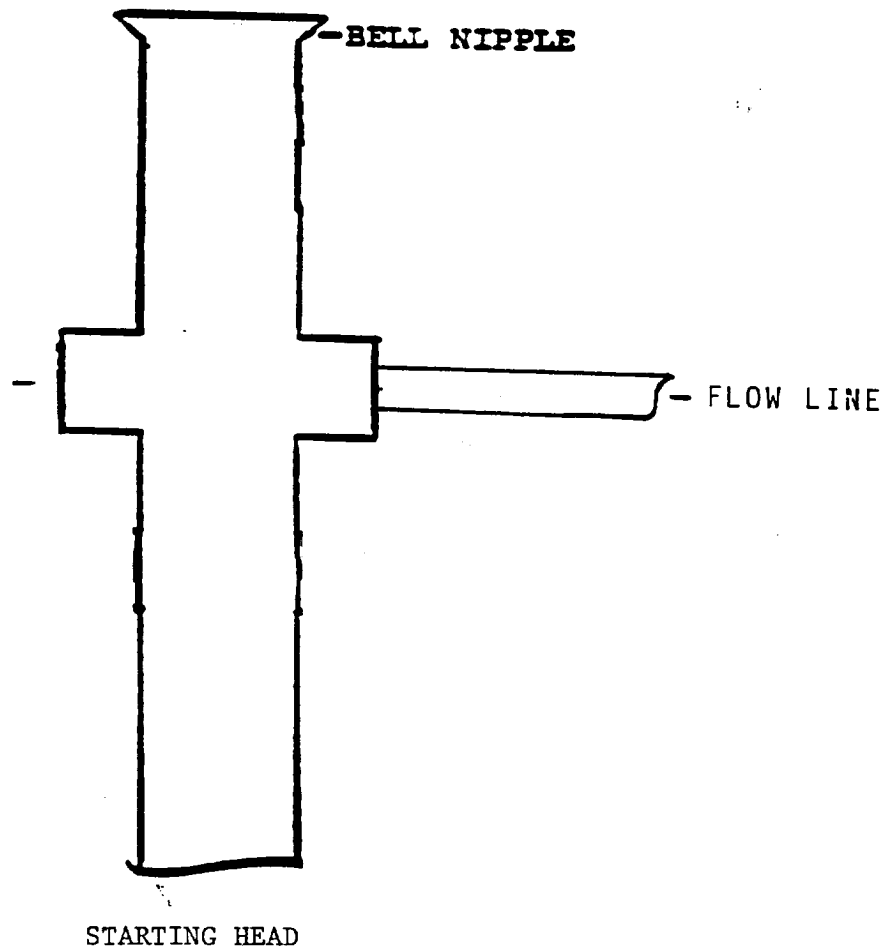
UL or lot No.	Section	Township	Range	Lot Idn	Feet from the	North/South line	Feet from the	East/West line	County
Dedicated Acres 320	Joint or Infill N	Consolidation Code	Order No.						

NO ALLOWABLE WILL BE ASSIGNED TO THIS COMPLETION UNTIL ALL INTERESTS HAVE BEEN CONSOLIDATED
OR A NON-STANDARD UNIT HAS BEEN APPROVED BY THE DIVISION

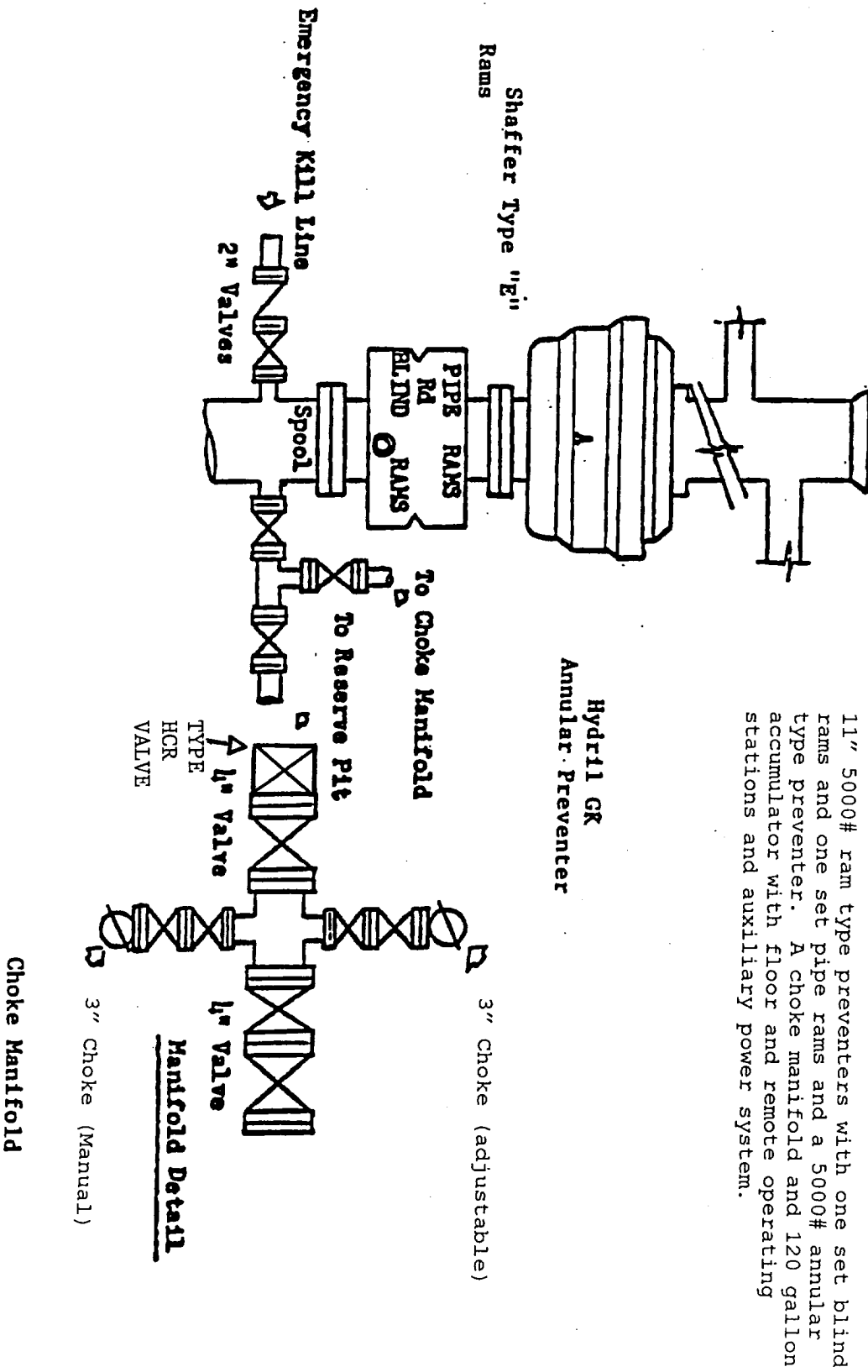
	Lot.: N32°32'33.4" Long.: W104°15'45.6"		OPERATOR CERTIFICATION I hereby certify the the information contained herein is true and complete to the best of my knowledge and belief. Signature David Stewart Printed Name Regulatory Analyst Title 6/6/01 Date
			SURVEYOR CERTIFICATION I hereby certify that the well location shown on this plat was plotted from field notes of actual surveys made by me or under my supervision, and that the same is true and correct to the best of my belief. MAY 21, 2001 Date Surveyed Signature & Seal of Professional Surveyor 7977 W.O. No. 1497 Certificate No. Gary L. Jones 7977 JLP BASIN-SURVEYS

EXHIBIT A

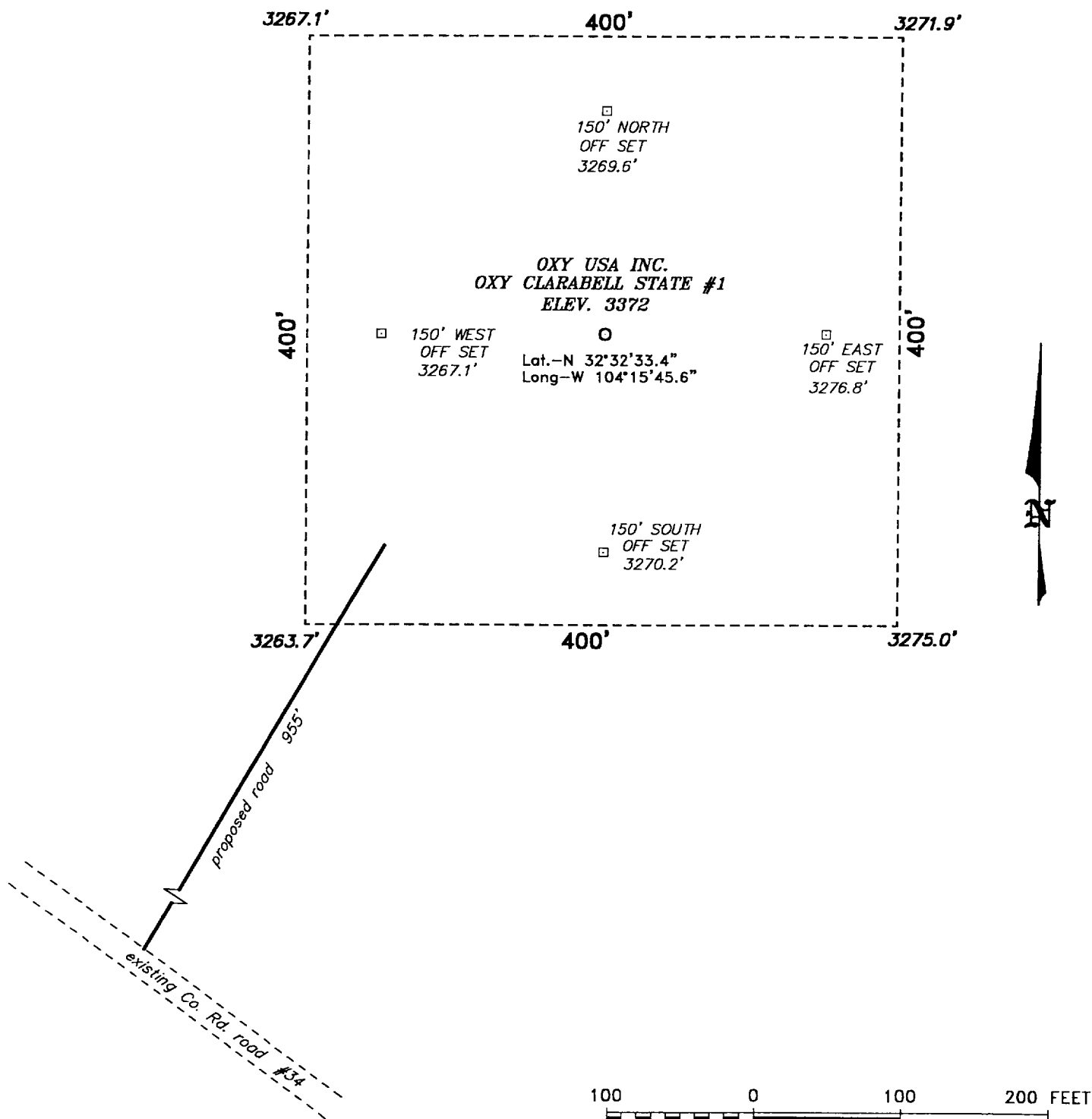
ANNULAR PREVENTOR
TO BE USED AS DIVERTOR ONLY



BLOWOUT PREVENTOR SCHEME



**SECTION 27, TOWNSHIP 20 SOUTH, RANGE 27 EAST, N.M.P.M.,
EDDY COUNTY, NEW MEXICO.**



Directions to Location:

FROM THE JUNCTION OF CO. RD. 208 AND CO. RD. 34, GO NORTHWEST ON 34 APPROX. 3.3 MILES TO A POINT WHICH LIES APPROX. 955 FEET FROM THE SOUTHWEST CORNER OF THE PAD OF PROPOSED WELL LOCATION.

BASIN SURVEYS P.O. BOX 1786—HOBBS, NEW MEXICO

W.O. Number: 1497

Drawn By: **JAMES PRESLEY**

Date: 05/22/01

Disk: JLP #1 — 1497A.DWG

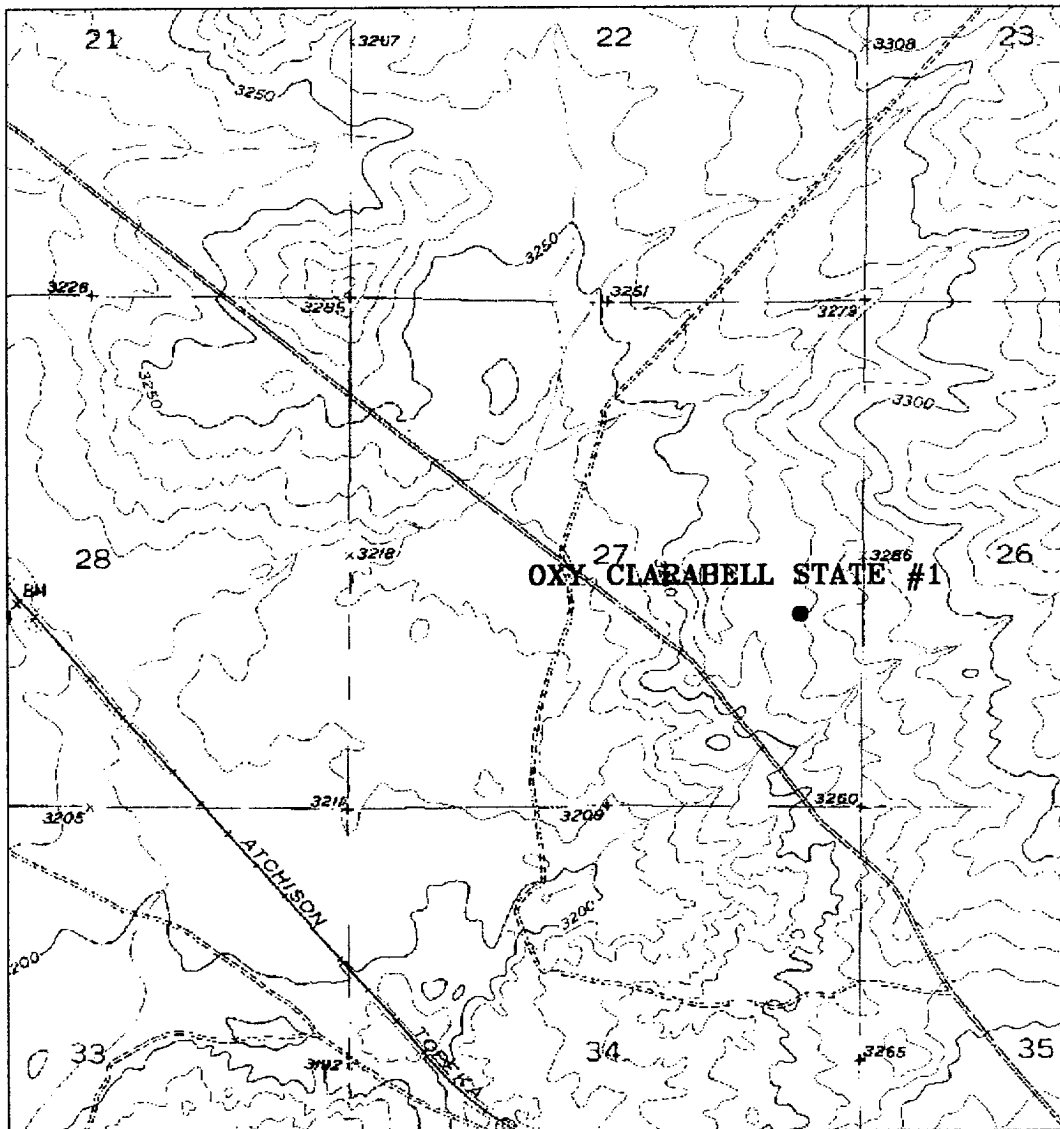
OXY USA INC.

REF: OXY CLARABELL STATE #1 / Well Pad Topo

THE OXY CLARABELL STATE No. 1 LOCATED 1980' FROM THE SOUTH LINE AND 660' FROM THE EAST LINE OF SECTION 27, TOWNSHIP 20 SOUTH, RANGE 27 EAST, N.M.P.M., EDDY COUNTY, NEW MEXICO.

Survey Date: 05/21/01

Sheet 1 of 1 Sheets



OXY CLARABELL STATE #1

Located at 1980' FSL and 660' FEL
 Section 27, Township 20 South, Range 27 East,
 N.M.P.M., Eddy County, New Mexico.



P.O. Box 1786
 1120 N. West County Rd.
 Hobbs, New Mexico 88241
 (505) 393-7316 -- Office
 (505) 392-3074 -- Fax
 basinsurveys.com

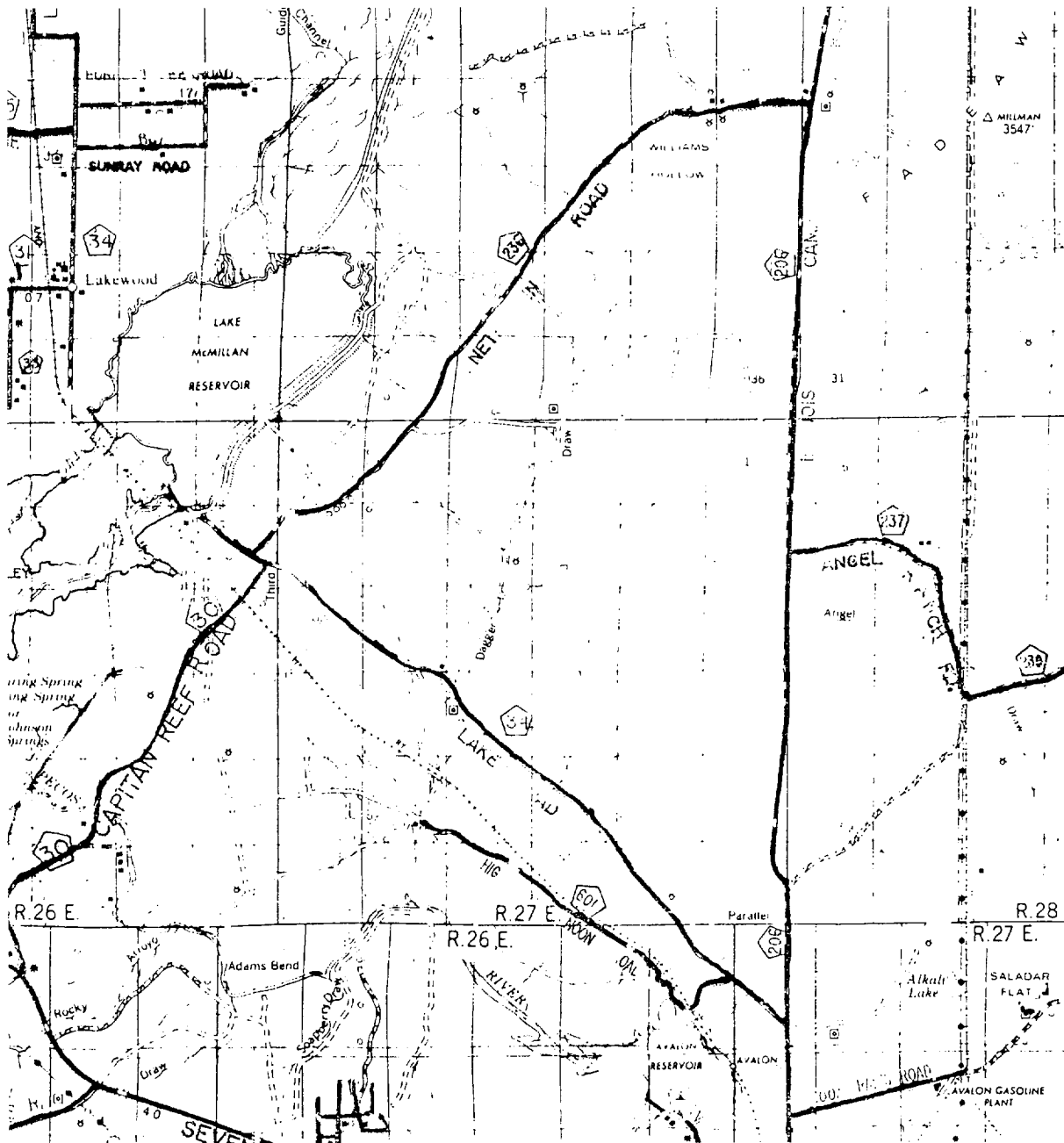
W.O. Number: 1497AA - JLP #1

Survey Date: 05-26-200005/21/01

Scale: 1" = 2000'

Date: 05/22/01

OXY USA INC.



OXY CLARABELL STATE #1
 Located at 1980' FSL and 660' FEL
 Section 27, Township 20 South, Range 27 East,
 N.M.P.M., Eddy County, New Mexico.

basin
surveys

focused on excellence
 in the oilfield

P.O. Box 1786
 1120 N. West County Rd.
 Hobbs, New Mexico 88241
 (505) 393-7316 - Office
 (505) 392-3074 - Fax
 basin-surveys.com

W.O. Number: 1497AA - JLP #1

Survey Date: 05-26-200005/21/01

Scale: 1" = 2000'

Date: 05/22/01

OXY USA INC.