

OPERATOR: MYCO INDUSTRIES  
WELL/LEASE: HELENA 25 FEE COM. 1  
COUNTY: EDDY

507-0078

STATE OF NEW MEXICO  
DEVIATION REPORT

105	3/4	8,291	1 1/2
190	1/4	8,472	2 3/4
283	1/4	8,567	3
446	1 1/4	8,660	3 1/2
756	1/4	8,723	3
1,044	1/2	8,786	3 1/4
1,325	1/2	8,847	2 3/4
1,630	1	8,941	2 3/4
1,944	2 1/2	9,050	2 1/4
2,013	3	9,192	2
2,050	3	9,412	1 3/4
2,107	2 3/4	9,694	1
2,164	2 1/2	10,170	1/4
2,226	2 1/4	11,040	1 1/4
2,265	2 1/4	11,450	1 1/2
2,429	2	12,020	1 1/2
2,618	1		
2,992	1/4		
3,482	1/2		
3,968	1		
4,468	3/4		
4,966	1/2		
5,441	1 1/2		
5,583	1		
6,068	1 1/2		
6,539	1 3/4		
7,026	1 1/2		
7,526	2		
8,009	2 3/4		
8,100	2		
8,195	1 3/4		



By Steve Moore

STATE OF TEXAS

COUNTY OF MIDLAND

The foregoing instrument was acknowledged before me on this 10th day of June, 2002, by Steve Moore on behalf of Patterson-UTi Drilling Company LP, LLLP.

Joni D. Hodges  
Notary Public for Midland County, Texas

My Commission Expires: 3/31/2003



DISTRICT I  
P.O. Box 1880, Hobbs, NM 88241-1880

State of New Mexico  
Energy, Minerals and Natural Resources Department

Form C-102  
Revised February 10, 1994  
Submit to Appropriate District Office  
State Lease - 4 Copies  
Fee Lease - 3 Copies

DISTRICT II  
P.O. Drawer DD, Artesia, NM 88211-0719

DISTRICT III  
1000 Rio Bravos Rd., Artesia, NM 87410

DISTRICT IV  
P.O. BOX 2088, SANTA FE, N.M. 87504-2088

OIL CONSERVATION DIVISION

P.O. Box 2088  
Santa Fe, New Mexico 87504-2088

☐ AMENDED REPORT

WELL LOCATION AND ACREAGE DEDICATION PLAT

API Number	Pool Code	Pool Name
		UND. CARLSBAD MORROW, EAST
Property Code	Property Name	Well Number
	HELENA	1
GRID No.	Operator Name	Elevation
	MYCO INDUSTRIES, INC	3119

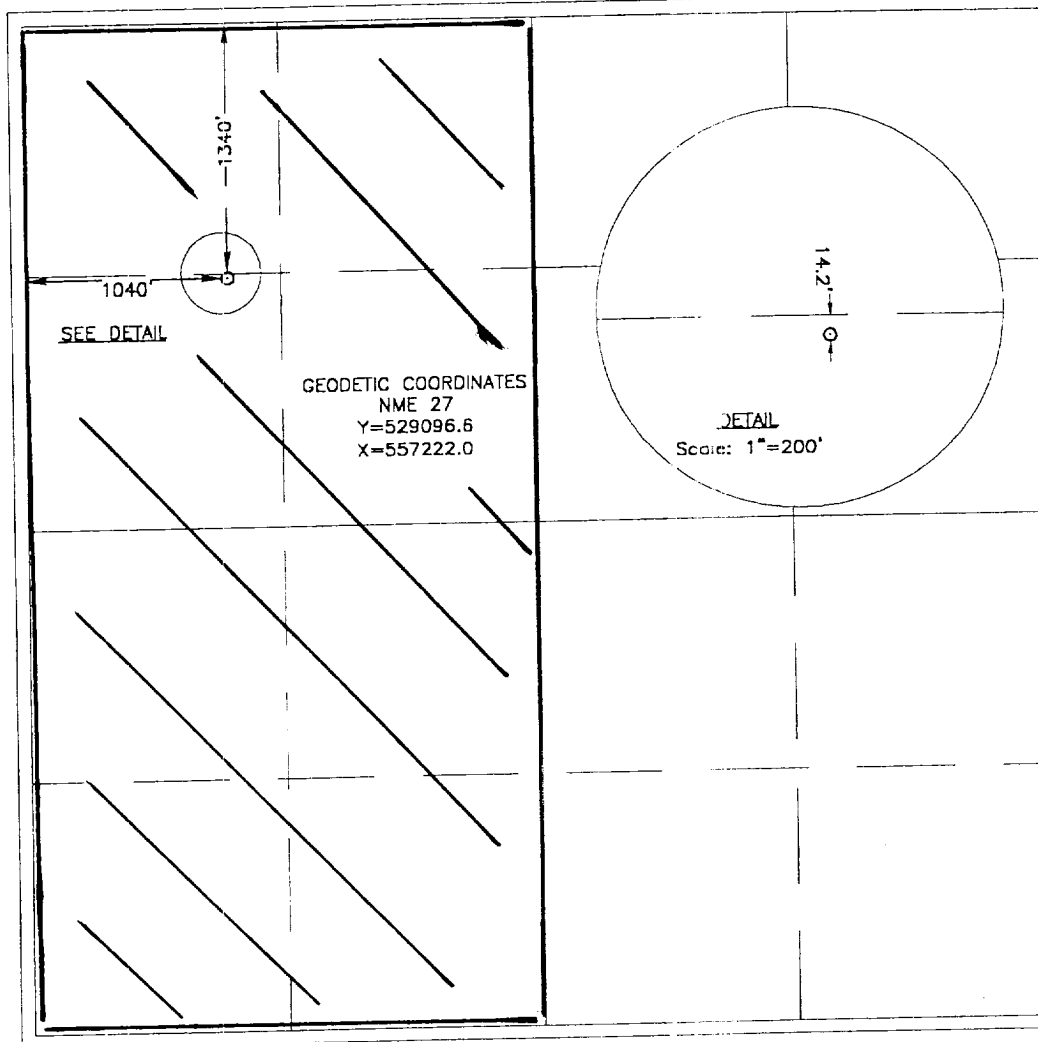
Surface Location

UL or lot No.	Section	Township	Range	Lot Idn	Feet from the	North/South line	Feet from the	East/West line	County
E	25	21 S	27 E		1340	NORTH	1040	WEST	EDDY

Bottom Hole Location If Different From Surface

UL or lot No.	Section	Township	Range	Lot Idn	Feet from the	North/South line	Feet from the	East/West line	County
Dedicated Acres		Joint or Infill		Consolidation Code		Order No.			
320 (W/2)									

NO ALLOWABLE WILL BE ASSIGNED TO THIS COMPLETION UNTIL ALL INTERESTS HAVE BEEN CONSOLIDATED  
OR A NON-STANDARD UNIT HAS BEEN APPROVED BY THE DIVISION



OPERATOR CERTIFICATION

I hereby certify the the information  
contained herein is true and complete to the  
best of my knowledge and belief.

*A.N. Muncy, PELS*

Signature

A.N. MUNCY

Printed Name

OPER-ENGR MGR.

Title

7/17/2001

Date

SURVEYOR CERTIFICATION

I hereby certify that the well location shown  
on this plat was plotted from field notes of  
actual surveys made by me or under my  
supervision and that the same is true and  
correct to the best of my belief.

JUNE 29, 2001

Date Surveyed

DC

Signature & Seal of  
Professional Surveyor

*Gary Kidron* 7/2/01  
01-11-0803

Certificate No. RONALD J. KIDRON 3239  
GARY KIDRON 12641