

District I
PO Box 1980, Hobbs, NM 88241-1980
District II
811 S. 1st Street, Artesia, NM 88210-2834
District III
1000 Rio Brazos Rd., Aztec, NM 87410
District IV
2040 South Pacheco, Santa Fe, NM 87505

State of New Mexico
Energy, Minerals & Natural Resources Department

OIL CONSERVATION DIVISION
2040 South Pacheco
Santa Fe, NM 87505

Form C-101
Revised October 18, 1994
Instructions on back
Submit to Appropriate District Office
State Lease - 6 Copies
Fee Lease - 5 Copies

☐ AMENDED REPORT

APPLICATION FOR PERMIT TO DRILL, RE-ENTER, DEEPEN, PLUGBACK, OR ADD A ZONE

¹ Operator name and Address OXY USA WTP Limited Partnership P.O. Box 50250 Midland, TX 79710-0250		² OGRID Number 192463
⁴ Property Code 27142 29063	⁵ Property Name OXY Uncle Ben State	³ API Number 30-0 15- 32100
		⁶ Well No. 2

⁷ Surface Location									
UL or lot no.	Section	Township	Range	Lot. Idn	Feet from the	North/South Line	Feet from the	East/West line	County
x P	21	20S	27E		990	south	660	east	Eddy

⁸ Proposed Bottom Hole Location If Different From Surface									
UL or lot no.	Section	Township	Range	Lot. Idn	Feet from the	North/South Line	Feet from the	East/West line	County
⁹ Proposed Pool 1 Undesignated Avalon Morrow					¹⁰ Proposed Pool 2 70920				

¹¹ Work Type Code N	¹² Well Type Code G	¹³ Cable/Rotary R	¹⁴ Lease Type Code S - V4808	¹⁵ Ground Level Elevation 3255
¹⁶ Multiple No	¹⁷ Proposed Depth 11400'	¹⁸ Formation Morrow	¹⁹ Contractor Patterson	²⁰ Spud Date 12/1/01

²¹ Proposed Casing and Cement Program

Hole Size	Casing Size	Casing weight/foot	Setting Depth	Sacks of Cement	Estimated TOC
17-1/2"	13-3/8"	48#	600'	550	Surface
12-1/4"	9-5/8"	36#	2400'	850	Surface
8-3/4"	5-1/2"	17#	11400'	850	7700'

²² Describe the proposed program. If this application is to DEEPEN or PLUG BACK give the data on the present productive zone and proposed new productive zone. Describe the blowout prevention program, if any. Use additional sheets if necessary

CEMENT TO COVER ALL OIL, GAS &
WATER BEARING ZONES

NOTIFY SPUD & TIME TO WITNESS
CEMENTING 9-5/8" CASING



²³ I hereby certify that the information given above is true and complete to the best of my knowledge and belief.

Signature:

David Stewart

11/12/01

Printed name:

David Stewart

Sr. Regulatory Analyst

Approved by:

OIL CONSERVATION DIVISION

ORIGINAL SIGNED BY TIM W. GUM
DISTRICT II SUPERVISOR

Approval Date

NOV 14 2001

Expiration Date:

NOV 14 2002

OXY Uncle Ben State #2
990 FSL 660 FEL SEC 21 T20S R27E Eddy County, NM
State Lease No. V-4808

PROPOSED TD: 11400' TVD

BOP PROGRAM: 0' - 600' None
600' - 2400' 13-5/8" 3M annular preventer, to be used as
divertor only.

2400' - 11400' 11" 5M blind pipe rams with 5M annular preventer
and rotating head below 7700'.

CASING: Surface: 13-3/8" OD 48# H40 ST&C new casing set at 600'
Intermediate: 9-5/8" OD 36# K55 ST&C new casing from 0-2400'
Production: 5-1/2" OD 17# N80-S95 LT&C new casing from 0-11400'

CEMENT: Surface - Circulate cement with 350sx 35:65 POZ/C with 6% Bentonite
+ 2% CaCl₂ + .25#/sx Cello-Seal followed by 200sx Cl C with 2% CaCl₂.

Intermediate - Circulate cement with 650sx 35:65 POZ/C with 6%
Bentonite + 2% CaCl₂ + .25#/sx Cello-Seal followed by 200sx Cl C
with 2% CaCl₂.

Production - Cement with 800sx 15:61:11 POZ/C/CSE with .5% FL-52
+ .5% FL-25 + 8#/sx Gilsonite followed by 75sx Cl C with .7%
FL-25. Estimated top of cement is 7700'.

Note: Cement volumes may need to be adjusted to hole caliper.

MUD: 0 - 600' Fresh water/native mud. Lime for pH control
(9-10). Paper for seepage.
Wt 8.7-9.2 ppg, Vis 32-34 sec
600' - 2400' Fresh/*Brine water. Lime for pH control (10.0-
10.5). Paper for seepage.
Wt 8.3-9.0/10.0-10.1ppg, Vis 28-29 sec
*Fresh water will be used unless chlorides in
the mud system increases to 20000PPM.
2400' - 7700' Fresh water. Lime for pH control(9-9.5). Paper
for seepage.
Wt 8.3-8.5 ppg, Vis 28-29 sec
7700' - 9500' Cut brine. Lime for pH control (10-10.5).
Wt 9.6-10.0 ppg, Vis 28-29sec
9500' - 11400' Mud up with an Duo Vis/Flo Trol mud system.
Wt 9.6-10.0ppg, Vis 32-36sec, WL<10cc

DISTRICT II
811 South First, Artesia, NM 88210

Energy, Minerals and Natural Resources Department

Submit to Appropriate District Office
State Lease - 4 Copies
Fee Lease - 3 Copies

DISTRICT III
1000 Rio Brazos Rd., Artec, NM 87410

OIL CONSERVATION DIVISION

DISTRICT IV
2040 South Pacheco, Santa Fe, NM 87506

2040 South Pacheco
Santa Fe, New Mexico 87504-2088

☐ AMENDED REPORT

WELL LOCATION AND ACREAGE DEDICATION PLAT

API Number 30-015-		Pool Code 70920	Pool Name Undesignated Avalon Morrow
Property Code 27149	Property Name OXY UNCLE BEN STATE		Well Number 2
OGRID No. 192463	Operator Name OXY USA WTP L.P.		Elevation 3255'

Surface Location

UL or lot No.	Section	Township	Range	Lot Idn	Feet from the	North/South line	Feet from the	East/West line	County
P	21	20 S	27 E		990	SOUTH	660	EAST	EDDY

Bottom Hole Location If Different From Surface

UL or lot No.	Section	Township	Range	Lot Idn	Feet from the	North/South line	Feet from the	East/West line	County
Dedicated Acres	Joint or Infill	Consolidation Code		Order No.					
320	N								

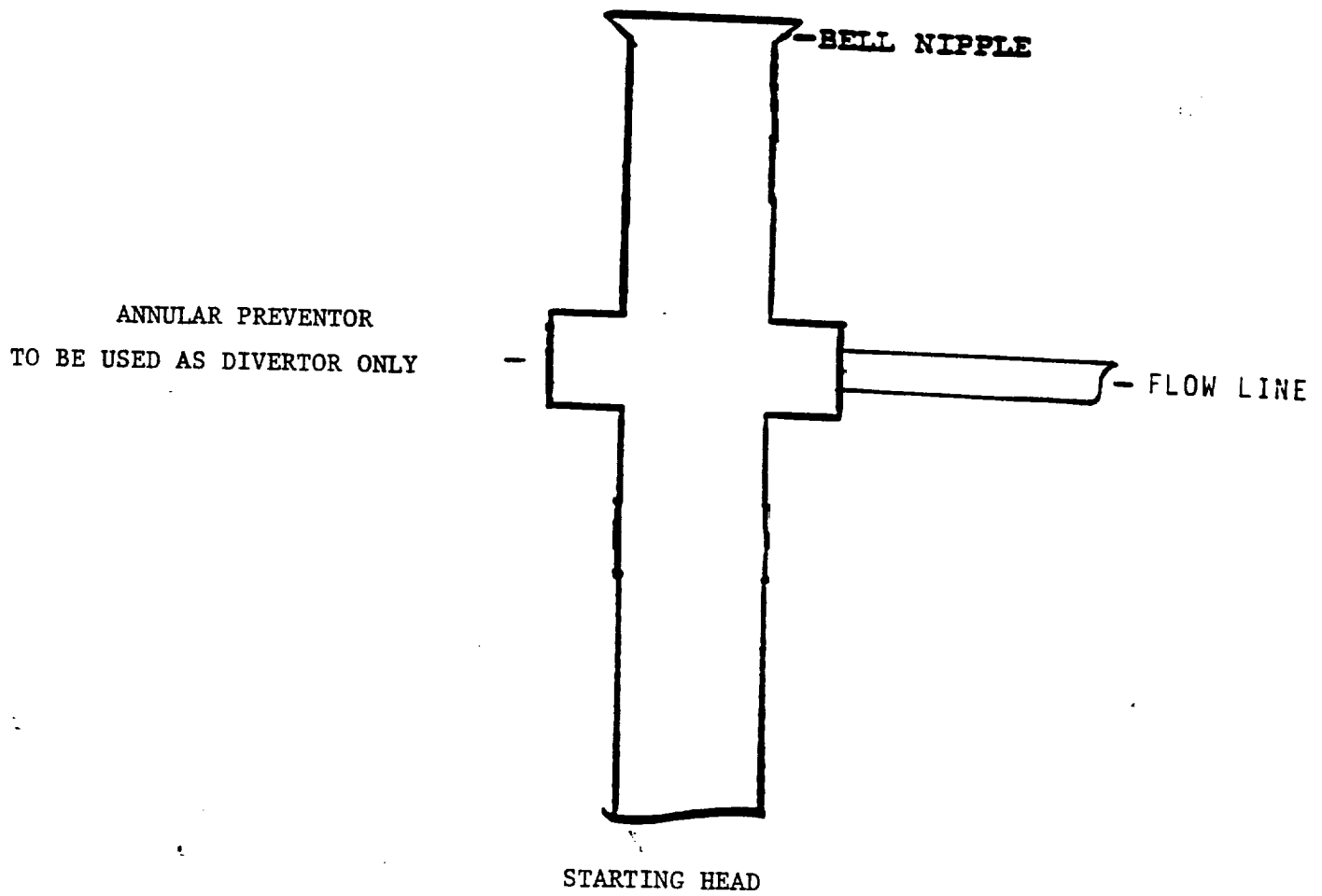
NO ALLOWABLE WILL BE ASSIGNED TO THIS COMPLETION UNTIL ALL INTERESTS HAVE BEEN CONSOLIDATED
OR A NON-STANDARD UNIT HAS BEEN APPROVED BY THE DIVISION

				OPERATOR CERTIFICATION
				<p><i>I hereby certify the the information contained herein is true and complete to the best of my knowledge and belief.</i></p> <p><u><i>David Stewart</i></u> Signature</p> <p><u>David Stewart</u> Printed Name</p> <p><u>Sr. Regulatory Analyst</u> Title</p> <p><u>11/12/01</u> Date</p>
				SURVEYOR CERTIFICATION
				<p><i>I hereby certify that the well location shown on this plat was plotted from field notes of actual surveys made by me or under my supervision and that the same is true and correct to the best of my belief.</i></p> <p>OCTOBER 25, 2001</p> <p>Date Surveyed</p> <p>Signature & Seal of Professional Surveyor</p> <p><u>W.O. No. 1989A</u></p> <p>Certificate No. <u>Gary L. Jones</u> 7977</p> <p>BASIN SURVEYS</p>

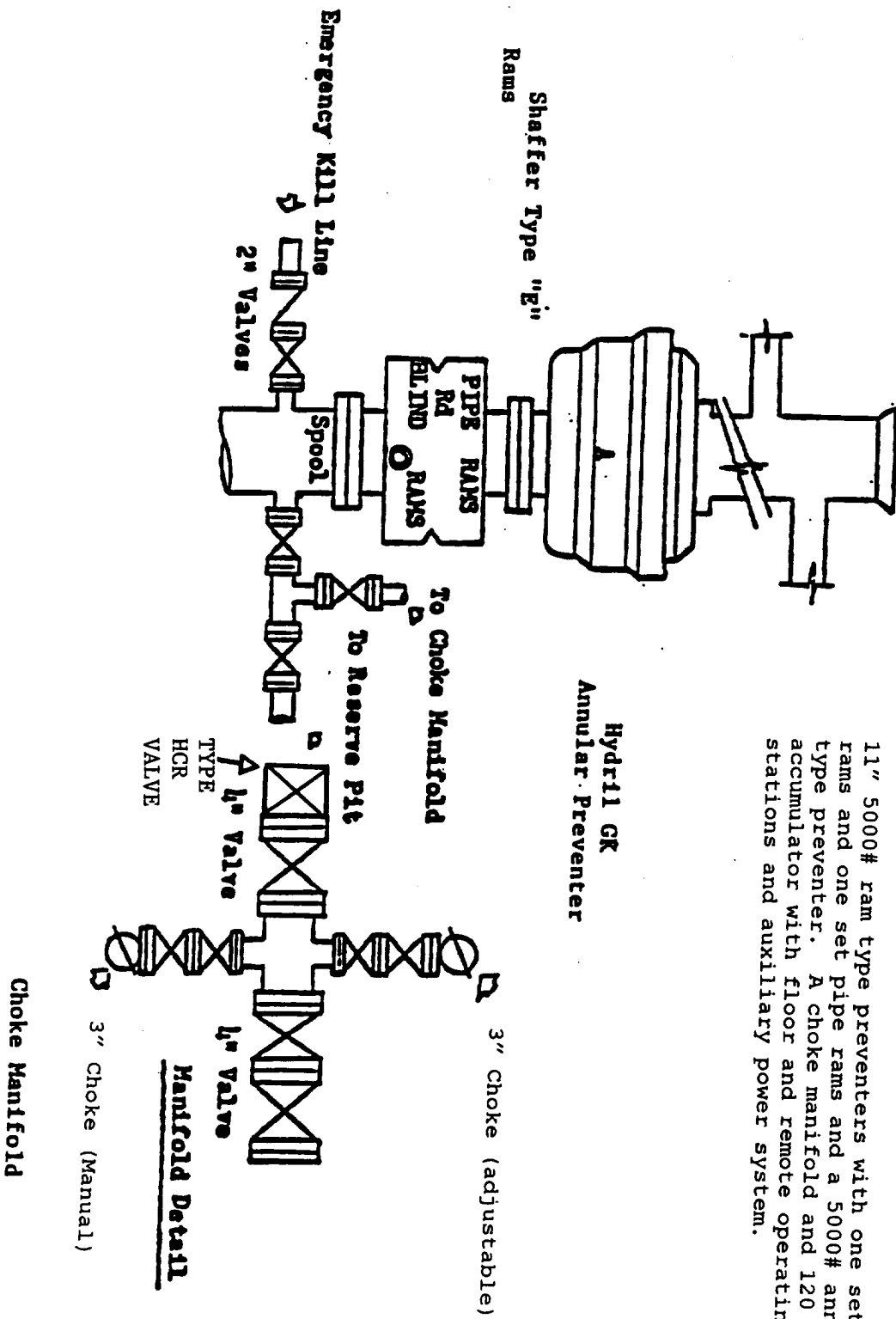
Lot - N32°33'16.2"
Lon - W104°16'47.1"

3239.4' 3242.3'
3262.2' 3268.4'
990' 660'

EXHIBIT A

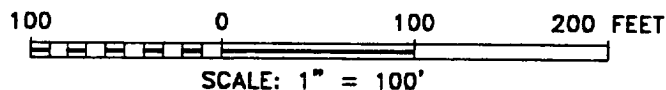
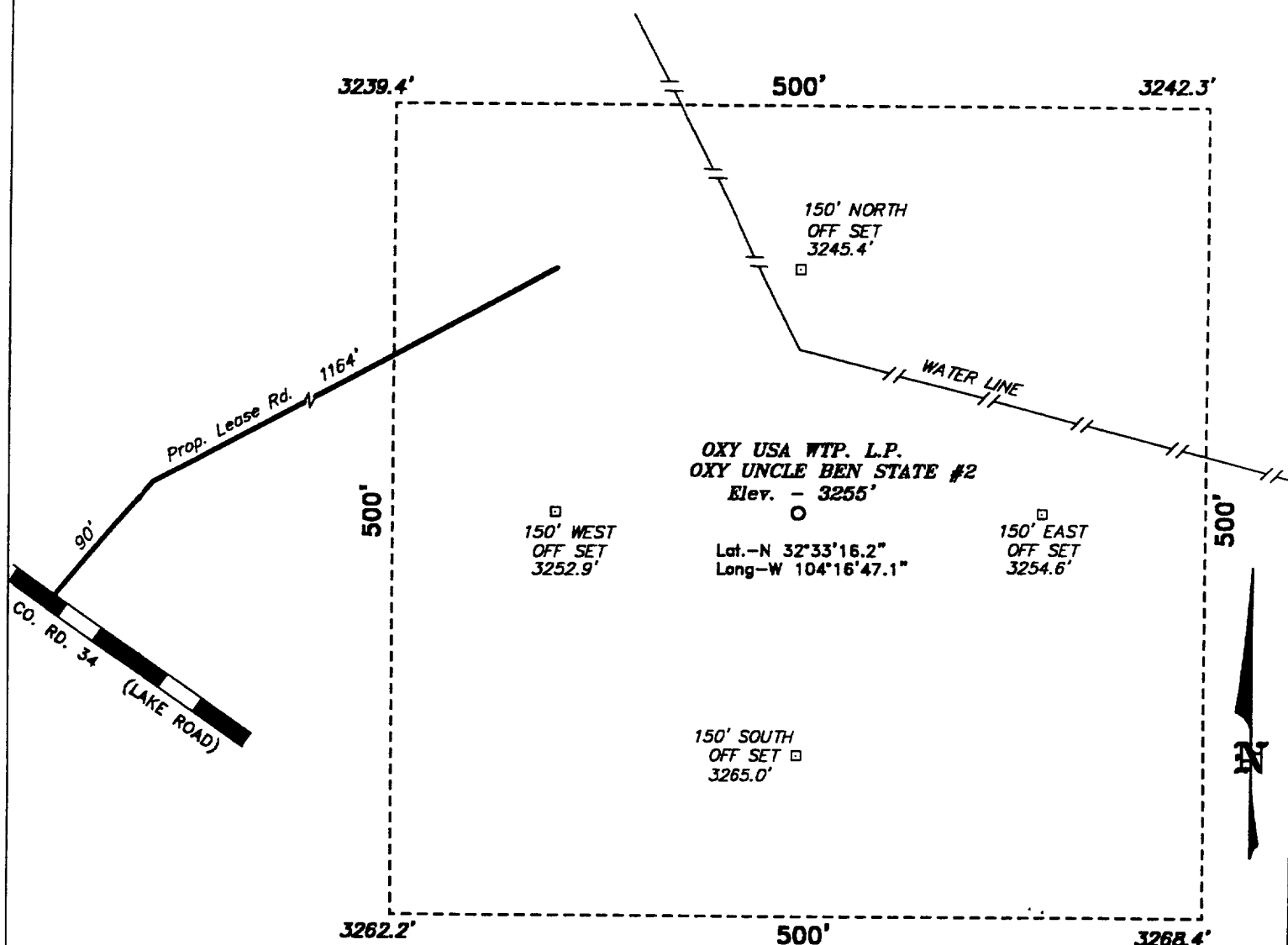


BLOWOUT PREVENTOR SCHEME



11" 5000# ram type preventers with one set blind rams and one set pipe rams and a 5000# annular type preventer. A choke manifold and 120 gallon accumulator with floor and remote operating stations and auxiliary power system.

**SECTION 21, TOWNSHIP 20 SOUTH, RANGE 27 EAST, N.M.P.M.,
EDDY COUNTY, NEW MEXICO.**



Directions to Location:

FROM THE JUNCTION OF CO. RD. 206 & CO. RD. 34, GO NORTHWEST ON CO. RD. 34 APPROX. 5.0 MILES TO A PROPOSED LEASE ROAD.

BASIN SURVEYS P.O. BOX 1786—HOBBS, NEW MEXICO

W.O. Number: 1989

Drawn By: **K. GOAD**

Date: 10-30-2001

Disk: KJG CD#3 - 1989A.DWG

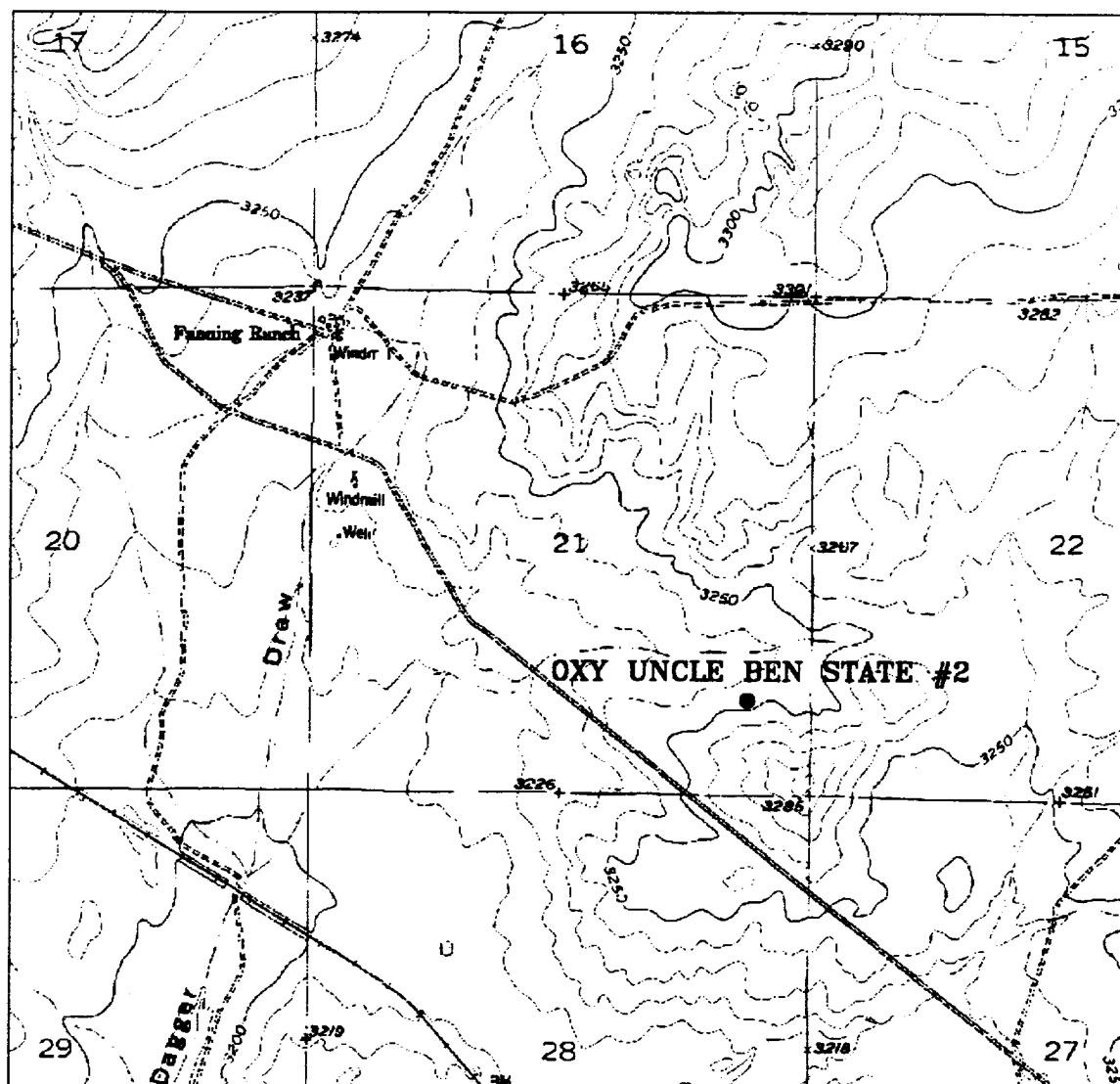
OXY USA WTP, L.P.

REF: Oxy Uncle Ben State No. 2 / Well Pad Topo

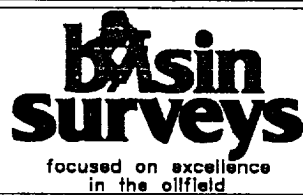
THE OXY UNCLE BEN STATE No. 2 LOCATED 990' FROM THE SOUTH LINE AND 660' FROM THE EAST LINE OF SECTION 21, TOWNSHIP 20 SOUTH, RANGE 27 EAST, N.M.P.M., EDDY COUNTY, NEW MEXICO.

Survey Date: 10-25-2001

Sheet 1 of 1 Sheets



OXY UNCLE BEN STATE #2
 Located at 990' FSL and 660' FEL
 Section 21, Township 20 South, Range 27 East,
 N.M.P.M., Eddy County, New Mexico.



P.O. Box 1786
 1120 N. West County Rd.
 Hobbs, New Mexico 88241
 (505) 393-7316 - Office
 (505) 392-3074 - Fax
 basinsurveys.com

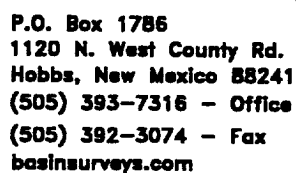
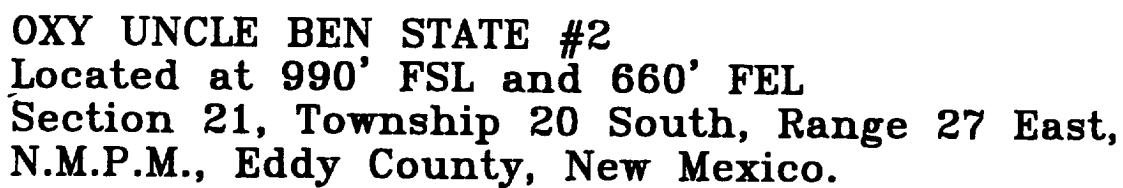
W.O. Number: 1989AA - KJG CD#3

Survey Date: 10-25-2001

Scale: 1" = 2000'

Date: 10-30-2001

OXY USA WTP, L.P.



Date: 10-30-2001

OXY USA WTP, L.P.