



Devon Energy Corporation
20 North Broadway
Oklahoma City, Oklahoma 73102-8260
Fax 405-552-8113

July 16, 2002

New Mexico Oil Conservation Division
1220 South St. Francis Drive
Santa Fe, NM 87505

Attention: Michael Stogner

Re: Unorthodox Well Location
Application Reference No. PKRVO-217150424
Winston Federal Gas Com #6
Section 31-T21S-R24E
Eddy County, New Mexico
DEC #52790-001; C-02-0398



Dear Mr. Stogner:

I am in receipt of your letter dated July 3, 2002 in which you point out certain deficiencies in the referenced unorthodox well location application. In response, I submit to you the following:

1. State Form C-102 dedicating the E/2 Section 31 as the spacing unit for the Winston Gas Com #3 as submitted to the NMOCD in May 1998.
2. State Form C-102 dedicating the W/2 Section 31 as the spacing unit for the Winston Gas Com #5 as submitted to the NMOCD in July 1998.
3. Amended State Form C-102 dated July 15, 2002 changing the previously dedicated spacing unit for the Winston Gas Com #7 from a N/2 spacing unit to an E/2 spacing unit. This amended form was mailed to the Artesia OCD office on July 15, 2002.
4. Amended State Form C-102 dated July 15, 2002 changing the previously dedicated spacing unit for the Winston Gas Com #8 from a S/2 spacing unit to an E/2 spacing unit. This amended form was mailed to the Artesia OCD office on July 15, 2002.

As a result of the above filings the Winston Gas Com #3, #7, and #8 will be dedicated to the E/2 spacing unit and the Winston Gas Com #1, #5, and #6 will be dedicated to the W/2 spacing unit. This should paint a much clearer picture with regard to allocation of production to the appropriate spacing unit. I apologize for any inconvenience.

New Mexico Oil Conservation Division

July 16, 2002

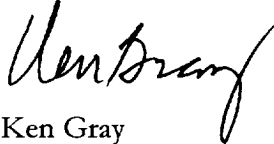
Page Two

Based on the above, I have taken the liberty of resubmitting the previously denied application for your further review and approval.

Please contact me at 405-552-4633 if any additional information is required.

Yours very truly,

DEVON ENERGY PRODUCTION COMPANY, L.P.



Ken Gray
Senior Land Advisor

KG:da/winston6.ltr
Enclosure

cc: Mr. Tim Gum
New Mexico Oil Conservation Division
1301 West Grand Avenue
Artesia, NM 88210

Mr. James Bruce
P. O. Box 1056
Santa Fe, NM 87504



DISTRICT I
P. O. Box 1980
Hobbs, NM 88241-1980

State of New Mexico
Energy, Minerals, and Natural Resources Department

EXHIBIT # 2

Form C-102
Revised 02-10-94

Instructions on back

DISTRICT II
P. O. Drawer DD
Artesia, NM 88211-0719

OIL CONSERVATION DIVISION

P. O. Box 2088
Santa Fe, New Mexico 87504-2088

Submit to the Appropriate
District Office
State Lease - 4 copies
Fee Lease - 3 copies

☐ AMENDED REPORT

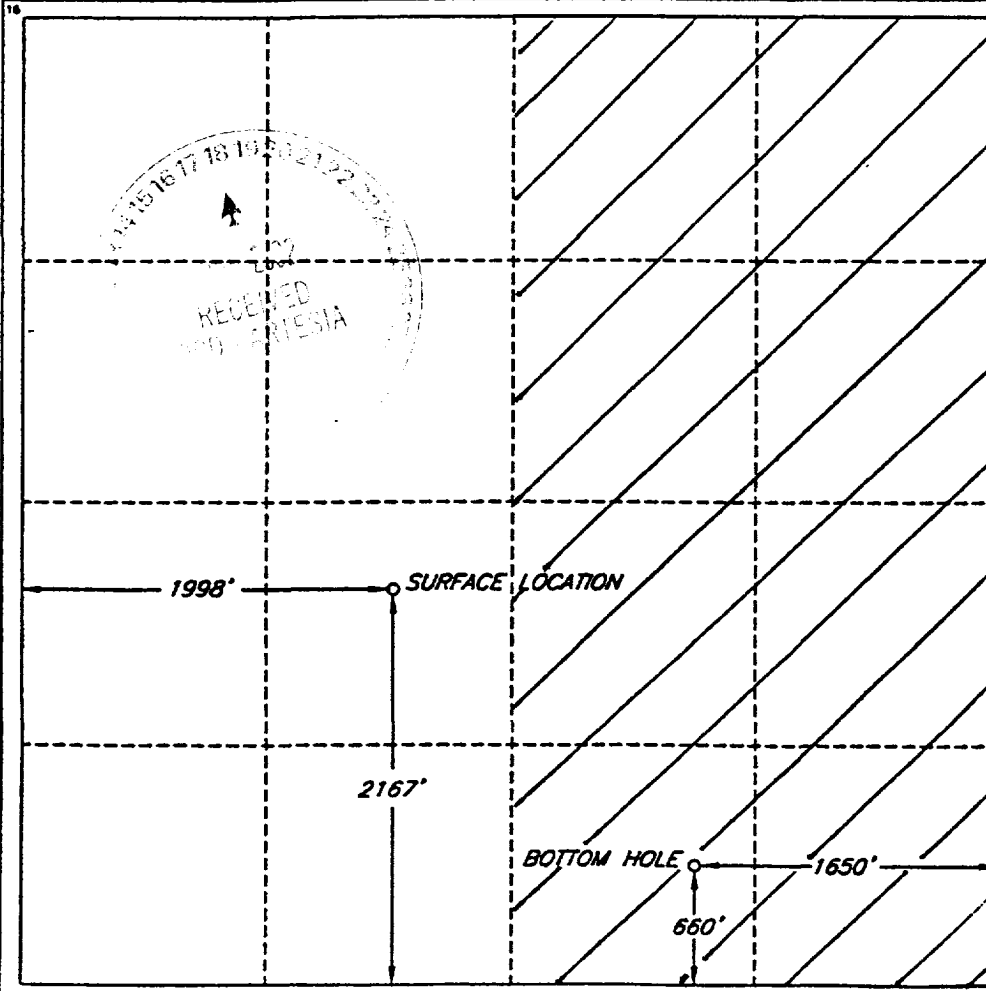
DISTRICT III
1000 Rio Brazos Rd.
Aztec, NM 87410

DISTRICT IV
P. O. Box 2088
Santa Fe, NM 87507-2088

WELL LOCATION AND ACREAGE DEDICATION PLAT

1 API Number		2 Pool Code		3 Pool Name INDIAN BASIN (MORROW)					
4 Property Code		5 Property Name WINSTON GAS COM						6 Well Number 3	
7 OGRID No. 6137		8 Operator Name DEVON ENERGY CORPORATION (NEVADA)						9 Elevation 3906'	
10 SURFACE LOCATION									
UL or lot no. K	Section 31	Township 21 SOUTH	Range 24 EAST, N.M.P.M.	Lot Ida	Feet from the 2167'	North/South line SOUTH	Feet from the 1998'	East/West line WEST	County EDDY
11 BOTTOM HOLE LOCATION IF DIFFERENT FROM SURFACE									
UL or lot no. 0	Section 31	Township 21 SOUTH	Range 24 EAST, N.M.P.M.	Lot Ida	Feet from the 660'	North/South line SOUTH	Feet from the 1650'	East/West line EAST	County EDDY
12 Dedicated Acres 320		13 Joint or Infill		14 Consolidation Code		15 Order No.			

NO ALLOWABLE WELL BE ASSIGNED TO THIS COMPLETION UNTIL ALL INTERESTS HAVE BEEN
CONSOLIDATED OR A NON-STANDARD UNIT HAS BEEN APPROVED BY THE DIVISION



OPERATOR CERTIFICATION

I hereby certify that the information
contained herein is true and complete
to the best of my knowledge and belief.

Signature
Candace R. Graham

Printed Name
Candace R. Graham

Title
Engineering Tech.

Date
May 11, 1998

SURVEYOR CERTIFICATION

I hereby certify that the well
location shown on this plat was
plotted from field notes of actual
surveys made by me or under
my supervision, and that the
same is true and correct to the
best of my belief.

Date of Survey

Signature
Professional Surveyor

Certificate No.
12128

Signature
Professional Surveyor

Certificate No.
12128

Signature
Professional Surveyor

Signature
Professional Surveyor

Signature
Professional Surveyor

DISTRICT I
P.O. Box 1980, Hobbs, NM 88240

State of New Mexico
Energy, Minerals and Natural Resources Department

Form C-102
Revised February 10, 1994
Instruction on back
Submit to Appropriate District Office
State Lease - 4 Copies
Fee Lease - 3 Copies

DISTRICT II
P.O. Drawer DD, Artesia, NM 88210

OIL CONSERVATION DIVISION

P.O. Box 2088
Santa Fe, New Mexico 87504-2088

DISTRICT III
1000 Rio Grande Rd., Aztec, NM 87410

☐ AMENDED REPORT

WELL LOCATION AND ACREAGE DEDICATION PLAT

API Number	Pool Code	Pool Name INDIAN BASIN (MORROW)
Property Code	Property Name Winston Gas Com	Well Number 5
OGRID No. 6137	Operator Name Devon Energy Corporation (Nevada)	Elevation 3928'

Surface Location

UL or lot No.	Section	Township	Range	Lot Idn	Feet from the	North/South line	Feet from the	East/West line	County
M	31	21 S	24 E		856	South	900	West	Eddy

Bottom Hole Location If Different From Surface

UL or lot No.	Section	Township	Range	Lot Idn	Feet from the	North/South line	Feet from the	East/West line	County
Dedicated Acres 317.18	Joint or Infill	Consolidation Code	Order No.						

NO ALLOWABLE WILL BE ASSIGNED TO THIS COMPLETION UNTIL ALL INTERESTS HAVE BEEN CONSOLIDATED
OR A NON-STANDARD UNIT HAS BEEN APPROVED BY THE DIVISION

	OPERATOR CERTIFICATION I hereby certify that the information contained herein is true and complete to the best of my knowledge and belief. <u>Candace R. Graham</u> Signature Candace R. Graham Printed Name Engineering Tech. Title September 4, 1998 Date
	SURVEYOR CERTIFICATION I hereby certify that the well location shown on this plat was plotted from field notes of actual surveys made by me or under my supervision, and that the same is true and correct to the best of my belief. July 7, 1998 Date Surveyed
	Signature of Surveyor <u>[Signature]</u> Professional Surveyor NEW MEXICO W.O. No. 10000 Certified by No. Hershman Jones 3640 PROFESSIONAL LAND SURVEYING Co.

DISTRICT I
P. O. Box 1980
Hobbs, NM 88241-1980

DISTRICT II
P. O. Drawer DD
Artesia, NM 88211-0719

DISTRICT III
1000 Rio Brazos Rd.
Aztec, NM 87410

DISTRICT IV
P. O. Box 2088
Santa Fe, NM 87507-2088

State of New Mexico
Energy, Minerals, and Natural Resources Department

Form C-102
Revised 02-10-94
Instructions on back

Submit to the Appropriate
District Office
State Lease - 4 copies
Fee Lease - 3 copies

OIL CONSERVATION DIVISION
P. O. Box 2088
Santa Fe, New Mexico 87504-2088

☒ AMENDED REPORT

*changed unit
configuration

WELL LOCATION AND ACREAGE DEDICATION PLAT

1 APT Number 30-015-30872	2 Pool Code 33685	3 Pool Name Indian Basin (Upper Penn) Assoc.
4 Property Code 20201	5 Property Name WINSTON GAS COM	6 Well Number 7
7 OGRID No. 6137	8 Operator Name PRODUCTION COMPANY, L.P. DEVON ENERGY CORPORATION (NEVADA)-	9 Elevation 3811'

" SURFACE LOCATION

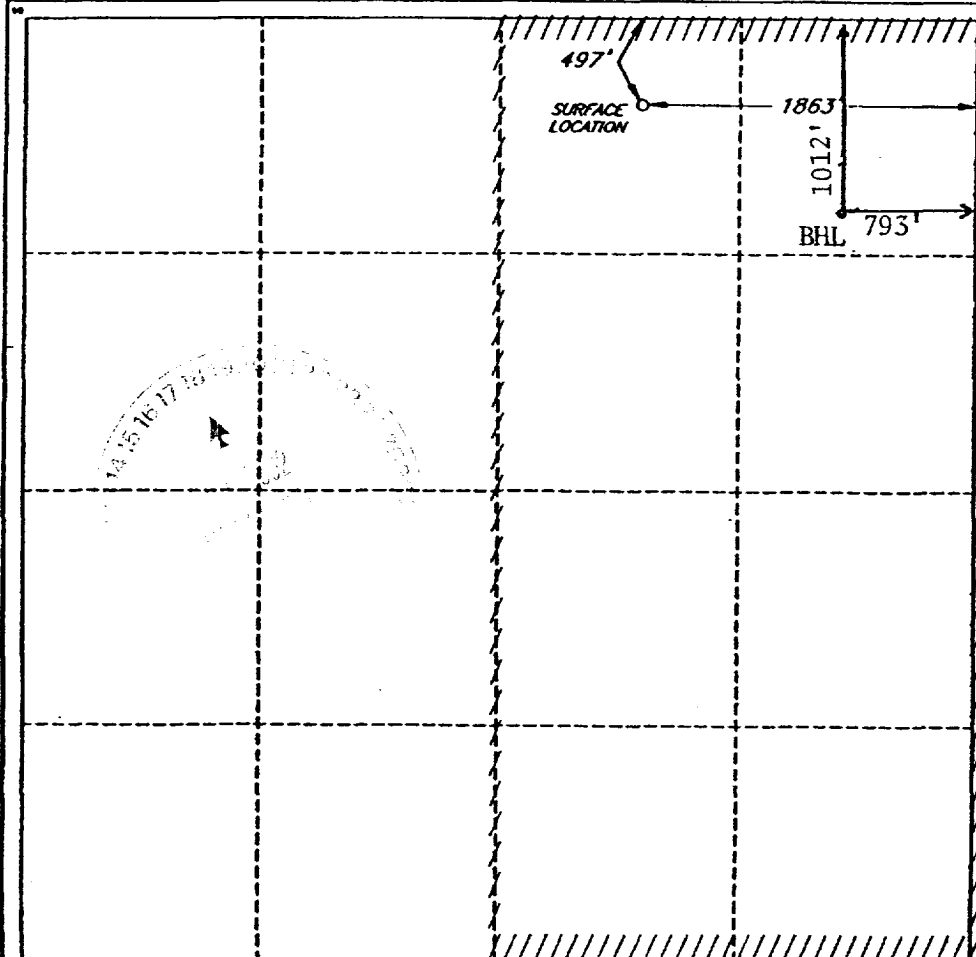
UL or lot no.	Section	Township	Range	Lot Ida	Feet from the	North/South line	Feet from the	East/West line	County
B	31	21 SOUTH	24 EAST, N.M.P.M.		497'	NORTH	1863'	EAST	EDDY

"BOTTOM HOLE LOCATION IF DIFFERENT FROM SURFACE

UL or lot no.	Section	Township	Range	Lot Ida	Feet from the	North/South line	Feet from the	East/West line	County
A #	31	21 SOUTH	24 EAST, N.M.P.M.		1850' 1012'	NORTH	660' 793'	EAST	EDDY

10 Dedicated Acres 320	11 Joint or Infill	12 Consolidation Code	13 Order No.
---------------------------	--------------------	-----------------------	--------------

NO ALLOWABLE WELL BE ASSIGNED TO THIS COMPLETION UNTIL ALL INTERESTS HAVE BEEN
CONSOLIDATED OR A NON-STANDARD UNIT HAS BEEN APPROVED BY THE DIVISION



OPERATOR CERTIFICATION

I hereby certify that the information
contained herein is true and complete
to the best of my knowledge and belief.

Signature
Candace R. Graham

Printed Name
Candace R. Graham

Title
Engineering Tech.

Date
*July 15, 2002

SURVEYOR CERTIFICATION

I hereby certify that the well
location shown on this plat was
plotted from field notes of actual
surveys made by me or under
my supervision, and that the
same is true and correct to the
best of my belief.

Date of Survey
SEPTEMBER 8, 1999

Signature and Seal of
Professional Surveyor

Certificate No.
V.L. BEZNER P.S. #7920

JOB #64995 / 51 NE / V.H.B.

DISTRICT I
P. O. Box 1980
Hobbs, NM 88241-1980

State of New Mexico
Energy, Minerals, and Natural Resources Department

Form C-102
revised 02-10-94
Instructions on back

DISTRICT II
P. O. Drawer DD
Artesia, NM 88211-0719

OIL CONSERVATION DIVISION
P. O. Box 2088
Santa Fe, New Mexico 87504-2088

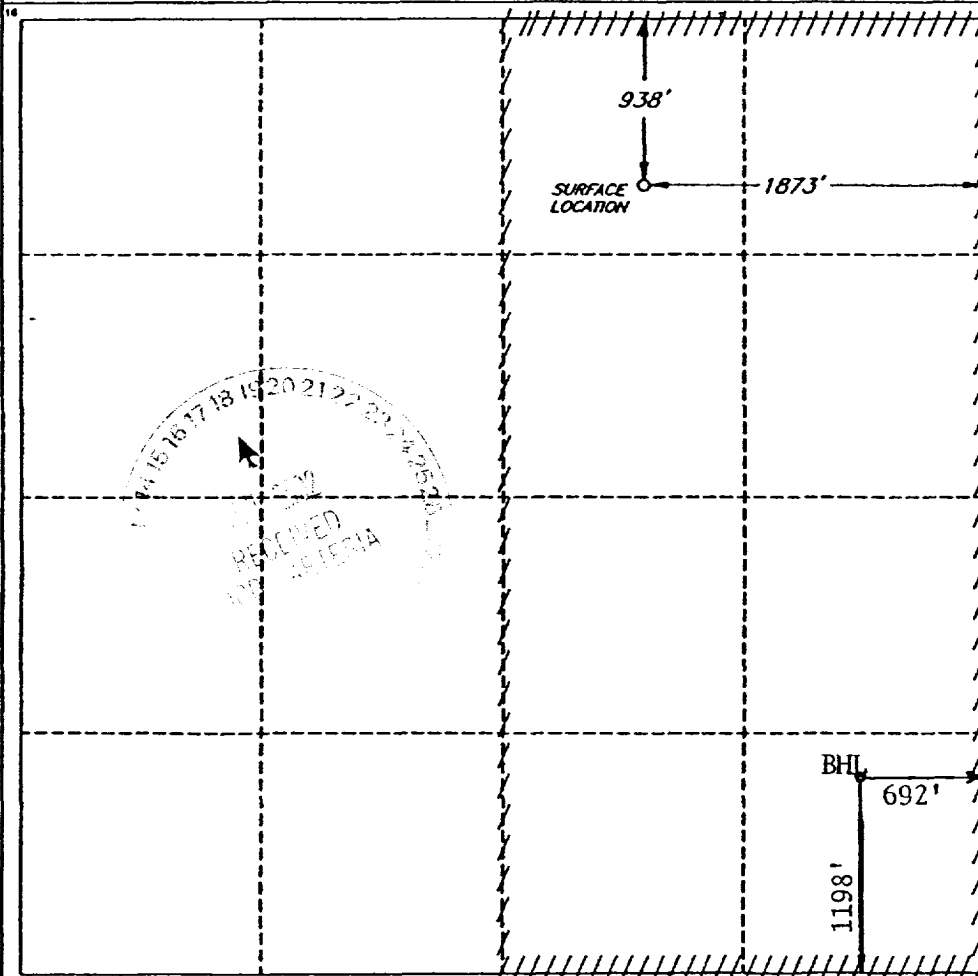
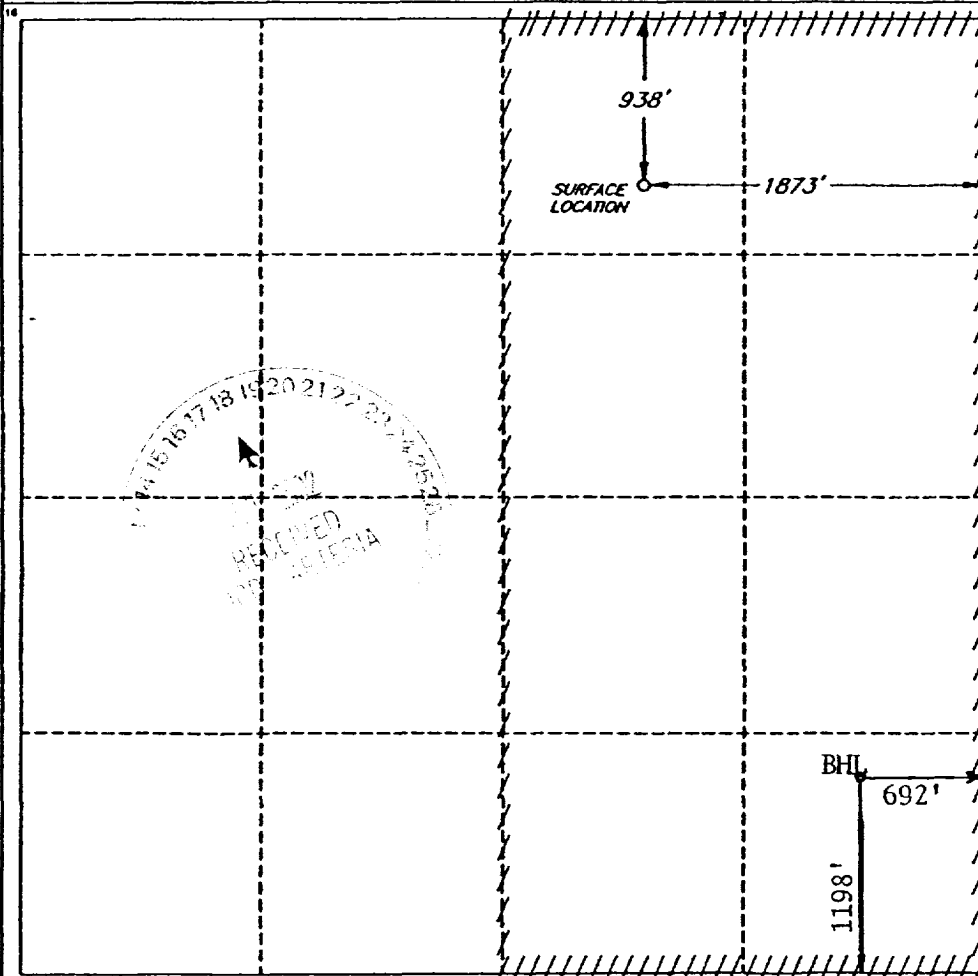
Submit to the Appropriate
District Office
State Lease - 4 copies
Fee Lease - 3 copies

DISTRICT III
1000 Rio Brazos Rd.
Aztec, NM 87410

☒ AMENDED REPORT
*changed unit
configuration

DISTRICT IV
P. O. Box 2088
Santa Fe, NM 87507-2088

WELL LOCATION AND ACREAGE DEDICATION PLAT

1 API Number 30-015-30873		2 Pool Code 33685		3 Pool Name Indian Basin (Upper Penn) Assoc.					
4 Property Code 20201		5 Property Name WINSTON GAS COM						6 Well Number 8	
7 OGRID No. 6137		8 Operator Name Production Company, L.P. DEVON ENERGY CORPORATION- NEVADA						9 Elevation 3829'	
* SURFACE LOCATION									
UL or lot no. B	Section 31	Township 21 SOUTH	Range 24 EAST, N.M.P.M.	Lot 1da	Feet from the 938'	North/South line NORTH	Feet from the 1873'	East/West line EAST	County EDDY
"BOTTOM HOLE LOCATION IF DIFFERENT FROM SURFACE									
UL or lot no. P 4-	Section 31	Township 21 SOUTH	Range 24 EAST, N.M.P.M.	Lot 1da	Feet from the 1980'	North/South line SOUTH	Feet from the 692'	East/West line EAST	County EDDY
12 Dedicated Acres 320		13 Joint or Infill		14 Consolidation Code		15 Order No. 1198'			
NO ALLOWABLE WELL BE ASSIGNED TO THIS COMPLETION UNTIL ALL INTERESTS HAVE BEEN CONSOLIDATED OR A NON-STANDARD UNIT HAS BEEN APPROVED BY THE DIVISION									
						OPERATOR CERTIFICATION I hereby certify that the information contained herein is true and complete to the best of my knowledge and belief.			
						Signature Candace R. Graham Printed Name Candace R. Graham Title Engineering Tech. Date *July 15, 2002			
						SURVEYOR CERTIFICATION I hereby certify that the well location shown on this plat was plotted from field notes of actual surveys made by me or under my supervision, and that the same is true and correct to the best of my belief.			
						Date of Survey SEPTEMBER 8, 1999 Signature and Seal of Professional Surveyor V. L. BEZNER 9-22-99 Certificate No. V. L. BEZNER P.S. #7920 JOB #64996 / 51 NE / V.H.B.			