

DISTRICT I
P.O. Box 1980, Hobbs, NM 88241-1980

DISTRICT II
P.O. Drawer DD, Artesia, NM 88211-0719

DISTRICT III
1000 Rio Brazos Rd., Aztec, NM 87410

DISTRICT IV
P.O. Box 2088, Santa Fe, N.M. 87504-2088

State of New Mexico
Energy, Minerals and Natural Resources Department

OIL CONSERVATION DIVISION
P.O. Box 2088
Santa Fe, New Mexico 87504-2088

Form C-102
Revised February 10, 1994
Submit to Appropriate District Office
State Lease - 4 Copies
Fee Lease - 3 Copies

WELL LOCATION AND ACREAGE DEDICATION PLAT

☐ AMENDED REPORT

API Number	Pool Code 79040	Pool Name Indian Basin; Upper Penn (Pro Gas)
Property Code 2587	Property Name BOGLE FLATS UNIT GAS COM	Well Number 24
OGRID No.	Operator Name CHEVRON U.S.A. PRODUCTION COMPANY	Elevation 4036'

Surface Location

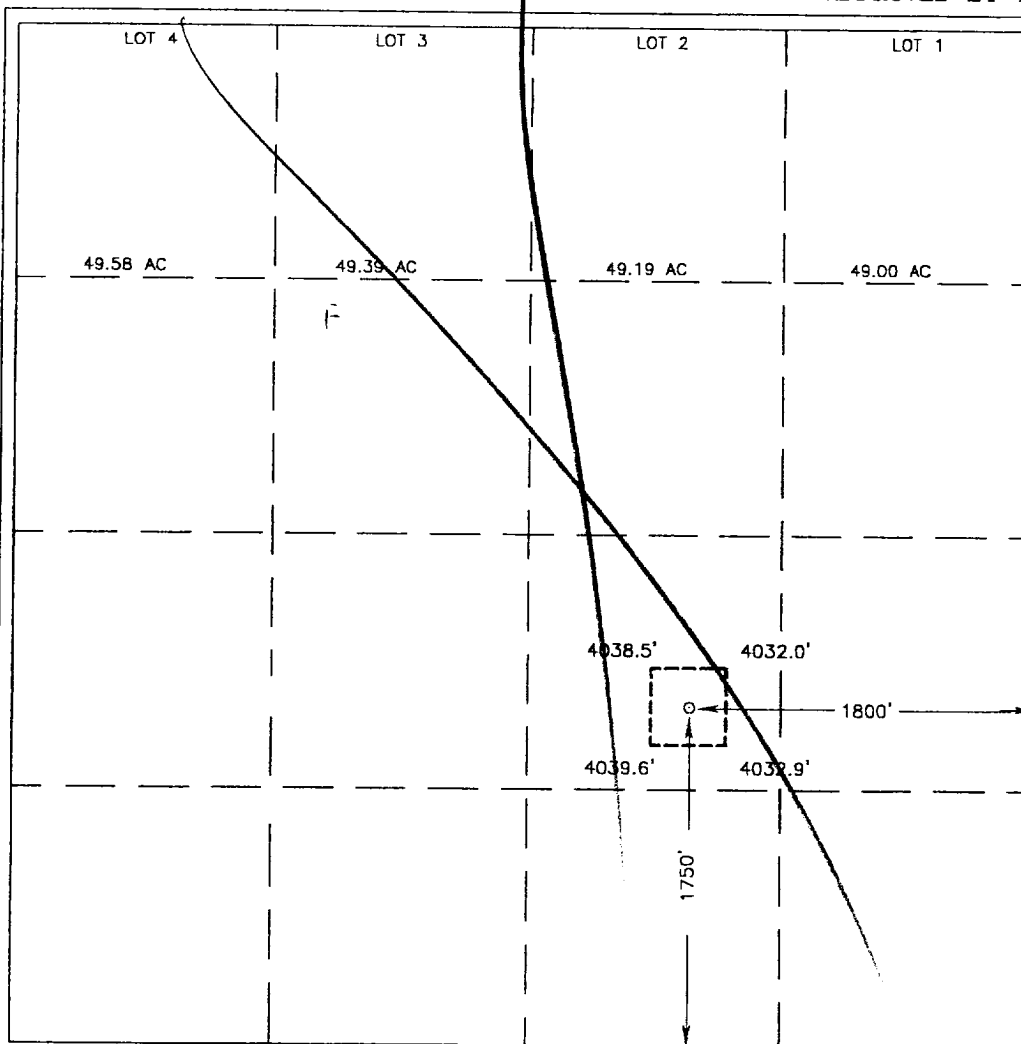
UL or lot No. J	Section 3	Township 22-S	Range 23-E	Lot Idn	Feet from the 1750	North/South line SOUTH	Feet from the 1800	East/West line EAST	County EDDY
--------------------	--------------	------------------	---------------	---------	-----------------------	---------------------------	-----------------------	------------------------	----------------

Bottom Hole Location If Different From Surface

UL or lot No.	Section	Township	Range	Lot Idn	Feet from the	North/South line	Feet from the	East/West line	County
---------------	---------	----------	-------	---------	---------------	------------------	---------------	----------------	--------

Dedicated Acres 640	Joint or Infill	Consolidation Code	Order No.
------------------------	-----------------	--------------------	-----------

NO ALLOWABLE WILL BE ASSIGNED TO THIS COMPLETION UNTIL ALL INTERESTS HAVE BEEN CONSOLIDATED
OR A NON-STANDARD UNIT HAS BEEN APPROVED BY THE DIVISION



OPERATOR CERTIFICATION	
I hereby certify the information contained herein is true and complete to the best of my knowledge and belief.	
<i>J. K. Ripley</i>	
Signature	J. K. Ripley
Printed Name	Regulatory O.A.
Title	10/4/01
Date	
SURVEYOR CERTIFICATION	
I hereby certify that the well location shown on this plat was plotted from field notes of actual surveys made by me or under my supervision, and that the same is true and correct to the best of my belief.	
AUGUST 06, 2001	
Date Surveyed	AWB
Signature & Seal of Professional Surveyor	
3239 01.11.0805	
Certified No.	RONALD L. EDSON 3239 12641