

District I
PO Box 1980, Hobbs, NM 88241-1980

District II
811 South First, Artesia, NM 88210

District III
1000 Rio Brazos Rd., Aztec, NM 87410

District IV
2040 South Pacheco, Santa Fe, NM 87505

State of New Mexico
Energy, Minerals & Natural Resources Department

OIL CONSERVATION DIVISION
2040 South Pacheco
Santa Fe, NM 87505

Form C-101
Revised October 18, 1994
Instructions on back
Submit to Appropriate District Office
State Lease - 6 Copies
Fee Lease - 5 Copies

☐ AMENDED REPORT

APPLICATION FOR PERMIT TO DRILL, RE-ENTER, DEEPEN, PLUGBACK, OR ADD A ZONE

Operator Name and Address Mewbourne Oil Company P.O. Box 5270 Hobbs, NM 88241		OGRID Number 14744
		API Number 30-0 15-32156
Property Code 29092	Property Name Liberty "36" State Com	Well No. 1Y

Surface Location

UL or lot no.	Section	Township	Range	Lot Idn	Feet from the	North/South line	Feet from the	East/West Line	County
A	36	20S	28E		660	N	1300	E	Eddy

Proposed Bottom Hole Location If Different From Surface

UL or lot no.	Section	Township	Range	Lot Idn	Feet from the	North/South line	Feet from the	East/West Line	County
Proposed Pool 1 Burton Flats Morrow					Proposed Pool 2				

Work Type Code N	Well Type Code G	Cable/Rotary R	Lease Type Code S	Ground Level Elevation 3231
Multiple	Proposed Depth 11900	Formation Morrow	Contractor Patterson UTI Rig # 46	Spud Date 01-10-02

Proposed Casing and Cement Program

Hole Size	Casing Size	Casing weight/foot	Setting Depth	Sacks of Cement	Estimated TOC
26"	20"	94# H40	300	500 sks	Surface
17-1/2"	13-3/8"	54.5# J-55	1350	900 sks	Surface
12-1/4"	8-5/8"	32# J-55	3200	1000 sks	Surface
7-7/8"	5-1/2"	17# N & S	11900	500 sks	Above Wolfcamp

²² Describe the proposed program. If this application is to DEEPEN or PLUG BACK give the data on the present productive zone and proposed new productive zone. Describe the blowout prevention program, if any. Use additional sheets if necessary.

0-300' Drill w/ FW & Spud Mud
300'-1350' Drill w/ 10#BW
1350'-3200' Drill w/ FW
3200'-9000' Drill w/ Cut Brine & Sweep as Needed
9000'-TD Drill w/ Cut Brine & Mud

BOP Schematics attached

²³ I hereby certify that the information given above is true and complete to the best of my knowledge and belief.

Signature:

Terry Burke

Printed name: Terry Burke

Title: Drilling Foreman

OIL CONSERVATION DIVISION

Approved By: **ORIGINAL SIGNED BY TIM W. GUM**
DISTRICT II SUPERVISOR

Title:

Approval Date:

JAN 10 2002

Expiration Date:

JAN 10 2003

DISTRICT I
1625 N. French Dr., Hobbs, NM 88240

DISTRICT II
811 South First, Artesia, NM 88210

DISTRICT III
1000 Rio Brazos Rd., Aztec, NM 87410

DISTRICT IV
2040 South Pacheco, Santa Fe, NM 87505

State of New Mexico
Energy, Minerals and Natural Resources Department

Form C-102
Revised March 17, 1999
Instruction on back
Submit to Appropriate District Office
State Lease - 4 Copies
Fee Lease - 3 Copies

OIL CONSERVATION DIVISION
P.O. Box 2088
Santa Fe, New Mexico 87504-2088

☐ AMENDED REPORT

WELL LOCATION AND ACREAGE DEDICATION PLAT

API Number	Pool Code	Pool Name
Property Code	Property Name LIBERTY "36" STATE COM.	Well Number 1Y
OGRID No. 14744	Operator Name MEWBOURNE OIL COMPANY	Elevation 3231



Surface Location

UL or lot No.	Section	Township	Range	Lot Idn	Feet from the	North/South line	Feet from the	East/West line	County
A	36	20S	28E		660	NORTH	1300	EAST	EDDY

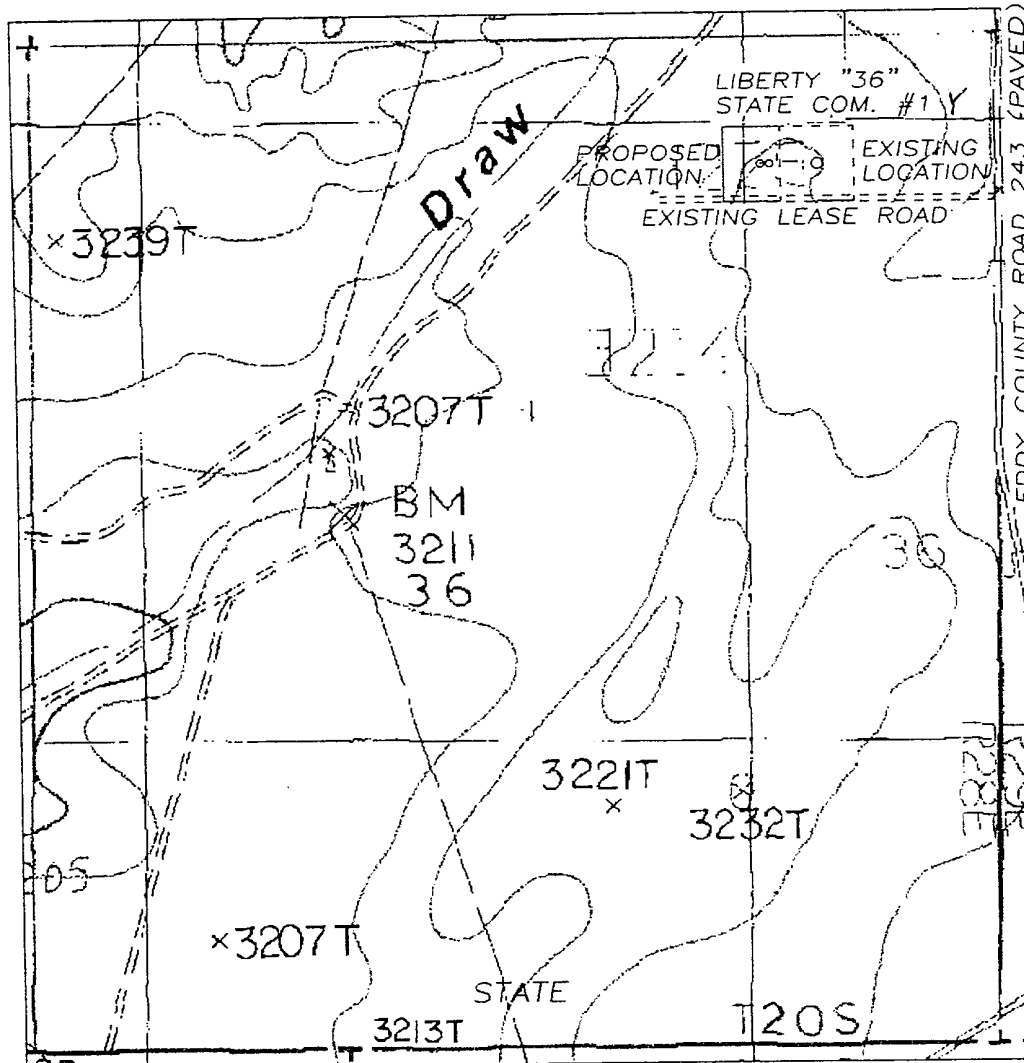
Bottom Hole Location If Different From Surface

UL or lot No.	Section	Township	Range	Lot Idn	Feet from the	North/South line	Feet from the	East/West line	County
Dedicated Acres 320	Joint or Infill	Consolidation Code	Order No.						

NO ALLOWABLE WILL BE ASSIGNED TO THIS COMPLETION UNTIL ALL INTERESTS HAVE BEEN CONSOLIDATED
OR A NON-STANDARD UNIT HAS BEEN APPROVED BY THE DIVISION

				Lease#VB-551 860' 1300' N.32°32'07.6" W.104°07'37.2"	OPERATOR CERTIFICATION <i>I hereby certify the the information contained herein is true and complete to the best of my knowledge and belief.</i>  Signature Terry Burke Printed Name Drilling Foreman Title January 10, 2002 Date
					SURVEYOR CERTIFICATION <i>I hereby certify that the well location shown on this plat was plotted from field notes of actual surveys made by me or under my supervision, and that the same is true and correct to the best of my belief.</i> 1/05/2002 Date Surveyed  Signature & Seal of Professional Surveyor Certificate No. Rachel L. Jones RLS 3640 LIBERTY LAND SURVEYOR GENERAL SURVEYING COMPANY

SECTION 36, TOWNSHIP 20 S JTH, RANGE 28 EAST, NMPM, ED. COUNTY, NEW MEXICO.



1000' 0 1000' 2000'
Scale 1" = 1000'

THE PREPARATION OF THIS PLAT AND THE PERFORMANCE OF THE SURVEY UPON WHICH IT IS BASED WERE DONE UNDER MY DIRECTION AND THE PLAT ACCURATELY DEPICTS THE RESULTS OF SAID SURVEY AND MEETS THE REQUIREMENTS OF THE STANDARDS FOR LAND SURVEYS IN NEW MEXICO AS ADOPTED BY THE NEW MEXICO STATE BOARD OF REGISTRATION FOR PROFESSIONAL ENGINEERS AND LAND SURVEYORS.

3640
HERSCHEL L. JONES P.E. AND P.L.S. No. 3640

GENERAL SURVEYING COMPANY P.O. BOX 1928
LOVINGTON, NEW MEXICO 88260

MEWBOURNE OIL COMPANY

MEWBOURNE LIBERTY "36" STATE COM. #1 Y WELL
LOCATED IN SECTION 36, TOWNSHIP 20 SOUTH,
RANGE 28 EAST, NMPM, EDDY COUNTY, NEW
MEXICO.

Survey Date: 1/05/2001	Sheet 1 of 1 Sheets
Drawn By: Ed Blevins	W.O. Number
Date: 1/05/01	Scale 1" = 1000' LIBERTY36-1

Mewbourne Oil Company

BOP Scematic for
12 1/4" Hole

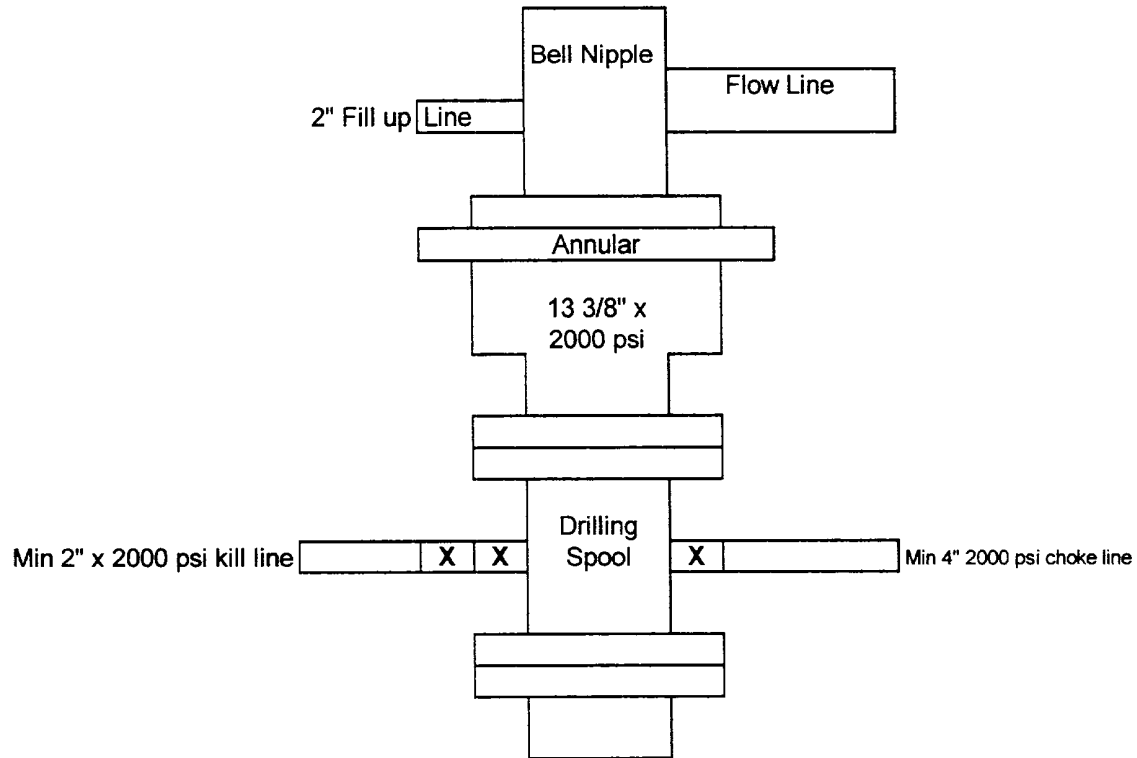


Exhibit #2

Liberty "36" State Com # 1Y
660' FNL & 1300' FEL
Sec.36 T-20S R-28E
Eddy, County New Mexico

Mewbourne Oil Company
BOP Schematic for
8 3/4" or 7 7/8" Hole

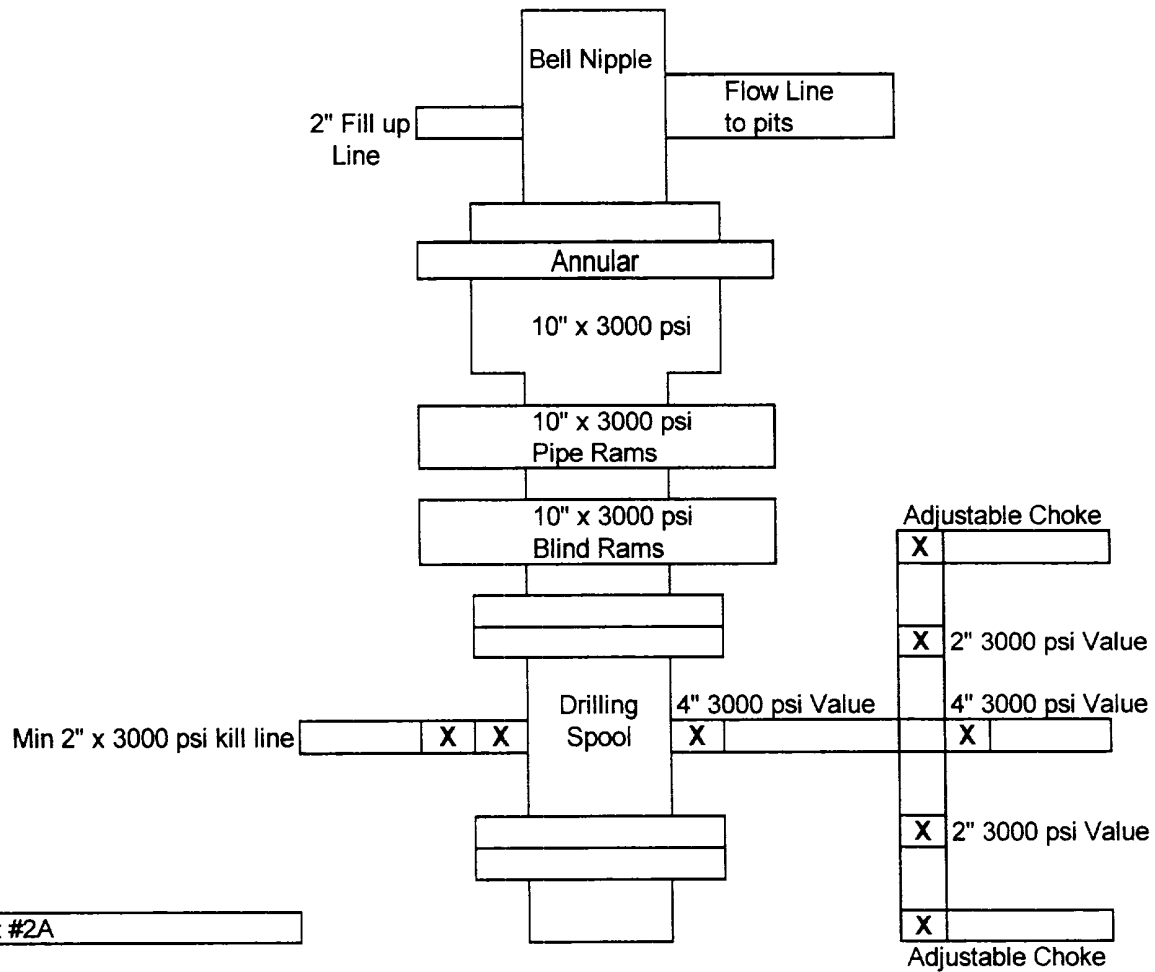


Exhibit #2A

Liberty "36" State Com. # 1Y
660' FNL & 1300' FEL
Sec.36 T-20S R-28E
Eddy, County New Mexico