

FIGURE K6-1. The schematic sketch of an accumulator system shows required and optional components.

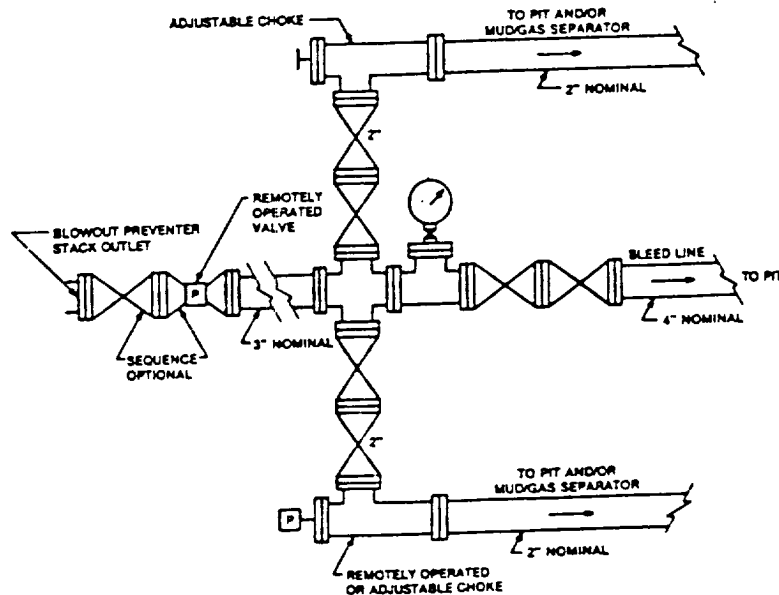


FIGURE K4-2. Typical choke manifold assembly for 5M rated working pressure service — surface installation.

EXHIBIT "E-1"
CHOKE MANIFOLD & CLOSING UNIT

DEVON-SFS OPERATING, INC.
RIFLEMAN "6-H" FEDERAL COM. # 2
UNIT "H" SECTION 6
T22S-R26E EDDY CO. NM