

District II
1301 W. Grand Avenue, Artesia, NM 88210
District III
1000 Rio Brazos Road, Aztec, NM 87410
District IV
1220 S. St. Francis Dr., Santa Fe, NM 87505

Energy Minerals and Natural Resources

Oil Conservation Division
1220 South St. Francis Dr.
Santa Fe, NM 87505

Form C-101
Revised March 17, 1995

Submit to appropriate District Office
State Lease - 6 Copies
Fee Lease - 5 Copies

☐ AMENDED REPORT

APPLICATION FOR PERMIT TO DRILL, RE-ENTER, DEEPEN, PLUG BACK OR ADD A ZONE

¹ Operator Name and Address POGO PRODUCING COMPANY P.O. BOX 10340 MIDLAND, TEXAS 79702-7340		² OGRID Number 17891
		³ API Number 30 - 015 - 32337
⁴ Property Code 27535-27534	⁵ Property Name McMILLAN "24" STATE	⁶ Well No. 3

⁷ Surface Location

UL or lot no.	Section	Township	Range	Lot Idn	Feet from the	North/South line	Feet from the	East/West line	County
C	24	20S	26E		660'	NORTH	2200'	WEST	EDDY C.

⁸ Proposed Bottom Hole Location If Different From Surface

UL or lot no.	Section	Township	Range	Lot Idn	Feet from the	North/South line	Feet from the	East/West line	County

⁹ Proposed Pool 1 McMILLIAN-MORROW GAS (81240)	¹⁰ Proposed Pool 2
--	-------------------------------

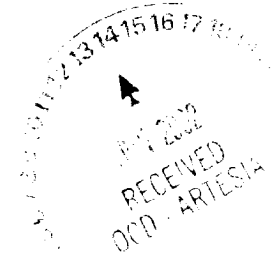
¹¹ Work Type Code N	¹² Well Type Code G	¹³ Cable/Rotary ROTARY	¹⁴ Lease Type Code S	¹⁵ Ground Level Elevation 3311' GR
¹⁶ Multiple NO	¹⁷ Proposed Depth 10,700'	¹⁸ Formation MORROW	¹⁹ Contractor UNKNOWN	²⁰ Spud Date WREN APPROVED

²¹ Proposed Casing and Cement Program

Hole Size	Casing Size	Casing weight/foot	Setting Depth	Sacks of Cement	Estimated TOC
25"	20"	Conductor	40'	Redi-mix	Surface
17½"	13 3/8"	48	500'	550 Sx.	Surface
12½"	9 5/8"	40.5	3000'	1200 Sx.	Surface
* 8½" 7 7/8"	5½"	17	10,700'	1000 Sx.	2000' From Sur.
*6 1/8"	5"	18#	8800-10,700'	200 Sx.	Top of liner

²² Describe the proposed program. If this application is to DEEPEN or PLUG BACK, give the data on the present productive zone and proposed new productive zone.
Describe the blowout prevention program, if any. Use additional sheets if necessary.

SEE ATTACHED SHEET



²³ I hereby certify that the information given above is true and complete to the best of my knowledge and belief.		OIL CONSERVATION DIVISION	
Signature: Joe T. Janica		Approved by: ORIGINAL SIGNED BY TIM W. GUM	
Printed name: Joe T. Janica		DISTRICT II SUPERVISOR	
Title: Agent		Title:	
Date: 06/13/02		Approval Date: JUN 17 2002 Expiration Date: JUN 17 2003	
Phone: 505-391-8503		Conditions of Approval:	

McMILLAN "24" STATE # 3
660' FNL & 2200' FWL
SEC. 24 T20S-R26E
EDDY CO. NM

1. Drill 25" hole to 40'. Set 40' of 20" conductor pipe and cement to surface with Redi-mix.
 2. Drill 17½" hole to 500'. Run and set 500' of 13 3/8" 48# H-40 ST&C casing. Cement with 550 Sx. of Class "C" cement + 2% CaCl + ¼# Flocele/Sx. Circulate cement to surface.
 3. Drill 12¼" hole to 3000'. Run and set 3000' of 9 5/8" 40.5# J-55 ST&C casing. Cement with 1200 Sx. of Class "C" cement + 2% CaCl, + ¼# Flocele/Sx. circulate cement to surface
 4. Drill 8½" hole to 10,700'*. Run and set 10,700' of 5½" casing as follows: 2700' of 5½" 17# N-80 LT&C, 6000' of 5½" 17# J-55 LT&C, 2000' of 5½" 17# N-80 LT&C. Set DV tools at 9100' & 6000'. Cement with 1000 Sx. of Class "H" cement + additives, top of cement 2000'. If no hole problems (lost circulation) occur reduce the hole size to 7 7/8" at 9000' and drill to 10,700'.
- * If chronic lost circulation is encountered thru the Cisco to 9000'. Run 9000' of 7" 26# J-55 LT&C casing with DVtool set at 6000'. Cement with 1000 Sx. of Class "H" cement + additives, top of cement 2500'. from surface. Drill 6 1/8" hole to 10,700' and run a 1900' 5" 18# HCP ST&C liner from 10,700' back to 8800'. Cement with 200 Sx. of Class "H" premium Plus cement + additives, cement to top of liner.

DISTRICT I
P.O. Box 1980, Hobbs, NM 88241-1980

DISTRICT II
P.O. Drawer DD, Artesia, NM 88211-0719

DISTRICT III
1000 Rio Brazos Rd., Artec, NM 87410

DISTRICT IV
P.O. BOX 2088, SANTA FE, N.M. 87504-2088

State of New Mexico
Energy, Minerals and Natural Resources Department

OIL CONSERVATION DIVISION

P.O. Box 2088
Santa Fe, New Mexico 87504-2088

Form C-102
Revised February 10, 1994
Submit to Appropriate District Office
State Lease - 4 Copies
Fee Lease - 3 Copies

WELL LOCATION AND ACREAGE DEDICATION PLAT

☐ AMENDED REPORT

API Number	Pool Code 81240	Pool Name McMILLIAN-MORROW GAS
Property Code 27535	Property Name McMILLAN 24 STATE	Well Number 3
OGRID No. 17891	Operator Name POGO PRODUCING COMPANY	Elevation 3311'

Surface Location

UL or lot No. C	Section 24	Township 20-S	Range 26-E	Lot Idn	Feet from the 660	North/South line NORTH	Feet from the 2200	East/West line WEST	County EDDY
--------------------	---------------	------------------	---------------	---------	----------------------	---------------------------	-----------------------	------------------------	----------------

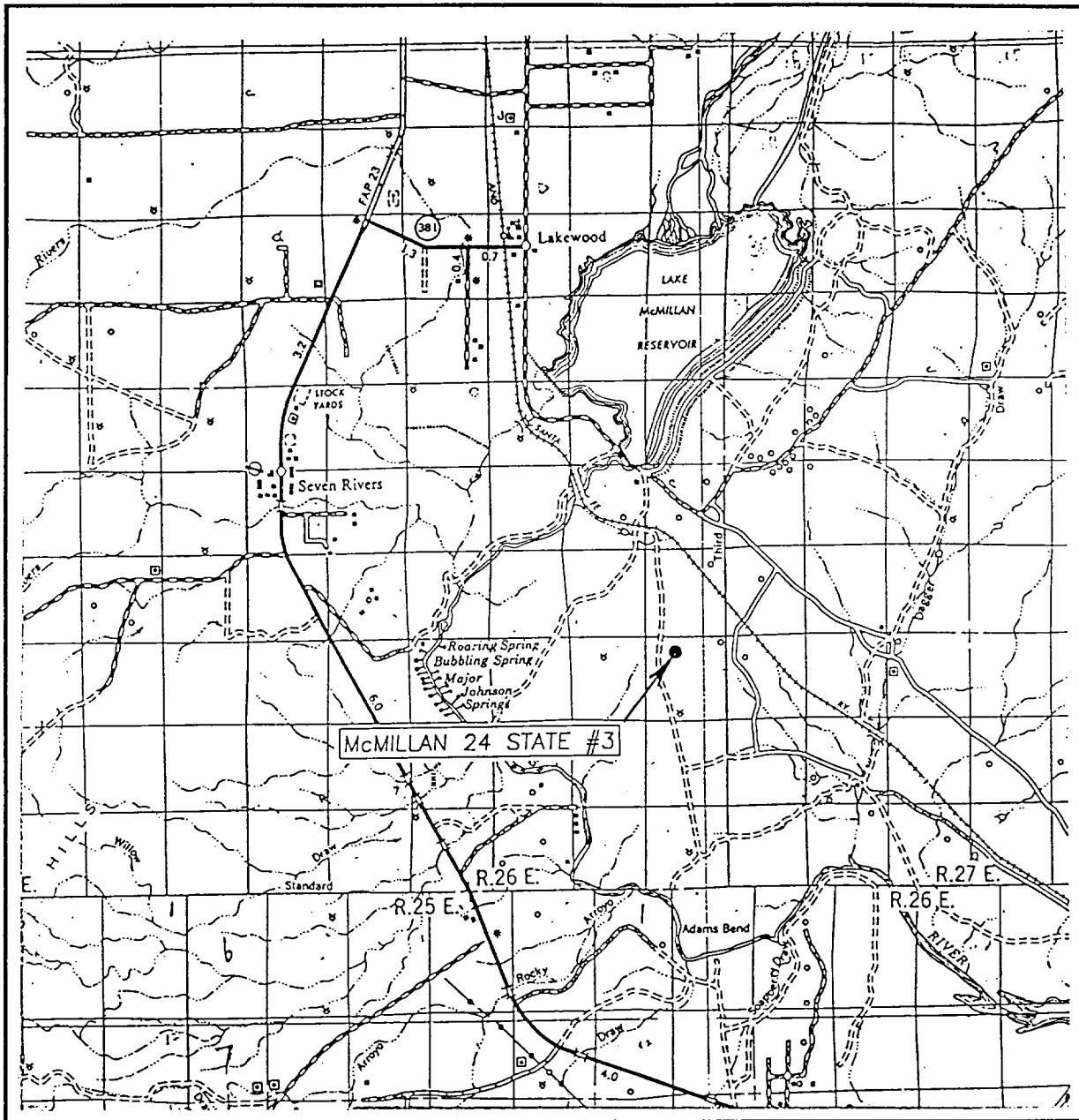
Bottom Hole Location If Different From Surface

UL or lot No.	Section	Township	Range	Lot Idn	Feet from the	North/South line	Feet from the	East/West line	County
Dedicated Acres 640	Joint or Infill	Consolidation Code	Order No.						

NO ALLOWABLE WILL BE ASSIGNED TO THIS COMPLETION UNTIL ALL INTERESTS HAVE BEEN CONSOLIDATED
OR A NON-STANDARD UNIT HAS BEEN APPROVED BY THE DIVISION

	<p>OPERATOR CERTIFICATION</p> <p>I hereby certify the the information contained herein is true and complete to the best of my knowledge and belief.</p> <p></p> <p>Signature</p> <p>Joe T. Janica</p> <p>Printed Name</p> <p>Agent</p> <p>Title</p> <p>06/13/02</p> <p>Date</p> <p>SURVEYOR CERTIFICATION</p> <p>I hereby certify that the well location shown on this plat was plotted from field notes of actual surveys made by me or under my supervision, and that the same is true and correct to the best of my belief.</p> <p>JUNE 11, 2002</p> <p>Date Surveyed</p> <p>Signature & Seal of Professional Surveyor</p> <p></p> <p>02-11-0433</p> <p>Certificate No. RONALD F. EIDSON 3239 GARY EIDSON 12641</p>
--	--

VICINITY MAP



SCALE: 1" = 2 MILES

SEC. 24 TWP. 20-S RGE. 26-E

SURVEY N.M.P.M.

COUNTY EDDY

DESCRIPTION 660' FNL & 2200' FWL

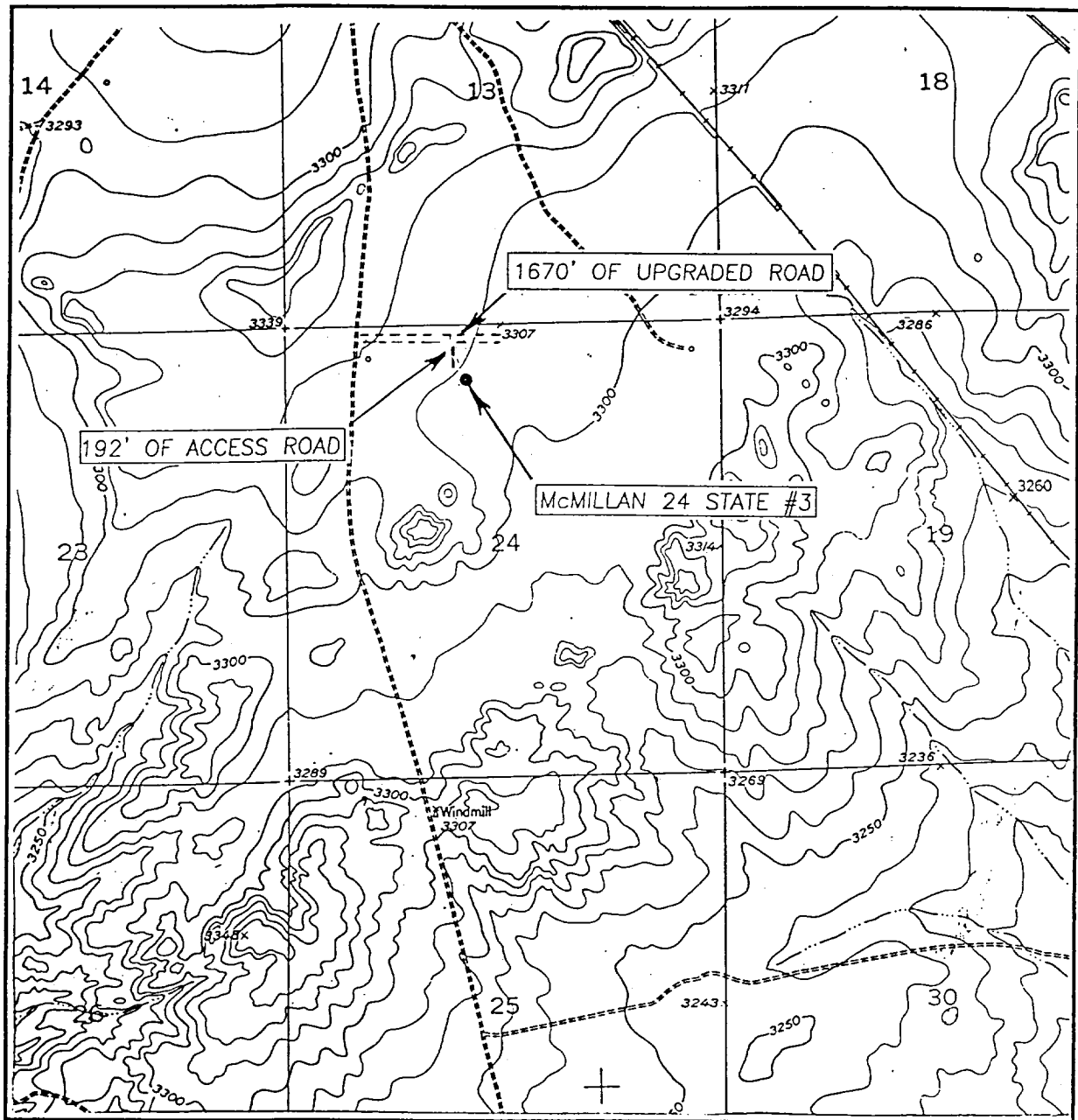
ELEVATION 3311'

OPERATOR POGO PRODUCING COMPANY

LEASE McMILLAN 24 STATE

JOHN WEST SURVEYING
HOBBS, NEW MEXICO
(505) 393-3117

LOCATION VERIFICATION MAP



SCALE: 1" = 2000'

CONTOUR INTERVAL: 10'
LAKE McMILLAN SOUTH, N.M.

SEC. 24 TWP. 20-S RGE. 26-E

SURVEY N.M.P.M.

COUNTY EDDY

DESCRIPTION 660' FNL & 2200' FWL

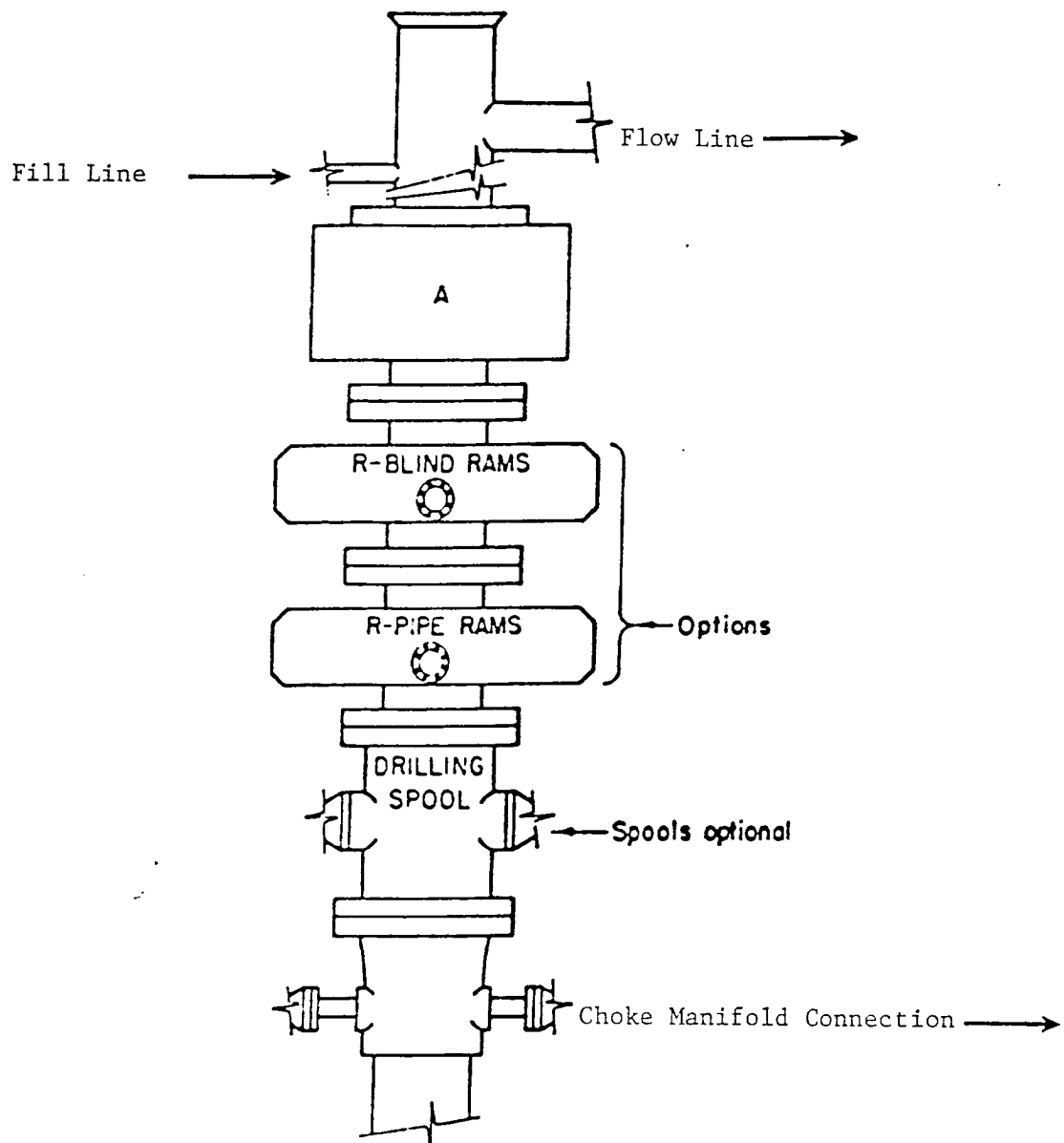
ELEVATION 3311'

OPERATOR POGO PRODUCING COMPANY

LEASE McMILLAN 24 STATE

U.S.G.S. TOPOGRAPHIC MAP
LAKE McMILLAN SOUTH, N.M.

JOHN WEST SURVEYING
HOBBS, NEW MEXICO
(505) 393-3117



ARRANGEMENT SRRA

1500 Series
5000 PSI WP

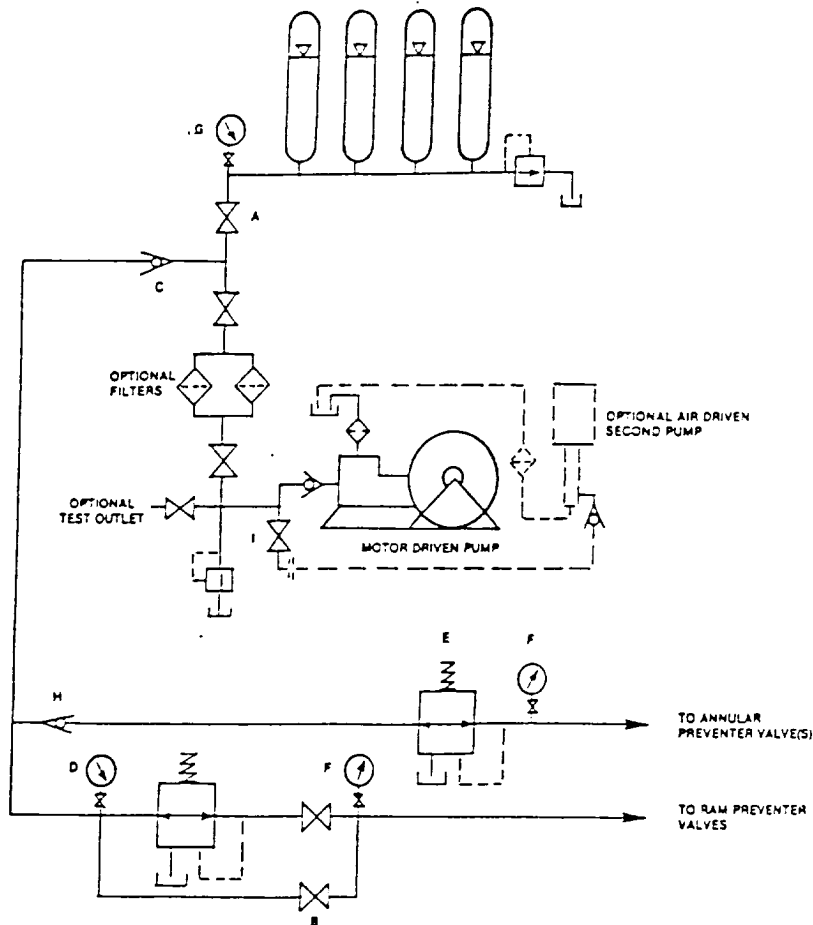


FIGURE K6-1. The schematic sketch of an accumulator system shows required and optional components.

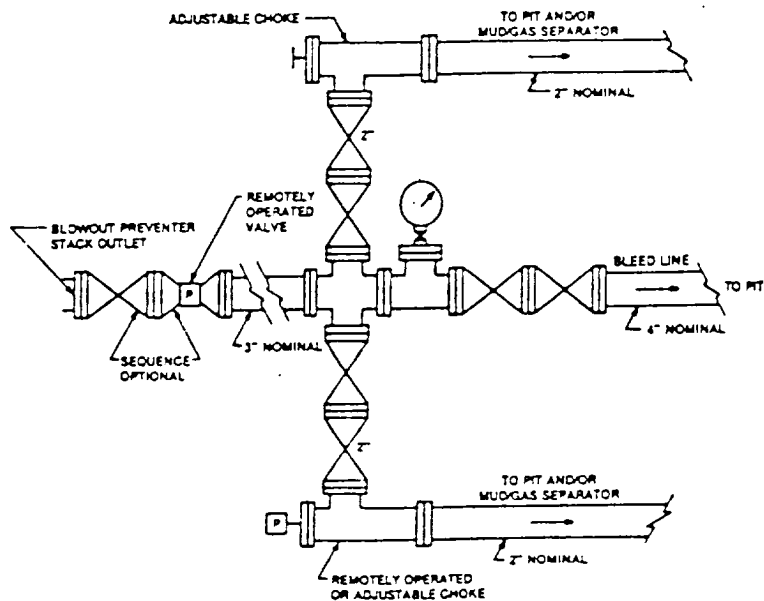


FIGURE K4-2. Typical choke manifold assembly for SM rated working pressure service — surface installation.