

1625 N. French Dr., Hoods, NM 88270
District II
811 South First, Artesia, NM 88210
District III
1000 Rio Brazos Road, Aztec, NM 87410
District IV
2040 South Pacheco, Santa Fe, NM 87505

Energy Minerals and Natural Resources

Revised March 17, 1999

Oil Conservation Division

2040 South Pacheco

Santa Fe, NM 87505

Submit to appropriate District Office
State Lease - 6 Copies
Fee Lease - 5 Copies

RECEIVED
OCD - ARTESIA

☐ AMENDED REPORT

APPLICATION FOR PERMIT TO DRILL, RE-ENTER, DEEPEN, PLUGBACK, OR ADD A ZONE

| | | |
|--|--|----------------------------|
| Operator Name and Address POGO PRODUCING COMPANY P.O. BOX 10340 MIDLAND, TEXAS 79702-7340 | | OGRID Number 17891 |
| Property Code 26401 | | API Number 30-015-32352 |
| Property Name LOST TANK "35"- STATE | | Well No. 6 |

Surface Location

| | | | | | | | | | |
|--------------------|---------------|-----------------|--------------|---------|------------------------|---------------------------|------------------------|------------------------|----------------|
| UL or lot no. J | Section 35 | Township 21S | Range 31E | Lot Idn | Feet from the 1780' | North/South line SOUTH | Feet from the 1750' | East/West line EAST | County EDDY |
|--------------------|---------------|-----------------|--------------|---------|------------------------|---------------------------|------------------------|------------------------|----------------|

Proposed Bottom Hole Location If Different From Surface

| | | | | | | | |
|---|---------|----------|-------|---------|---------------|---|------|
| UL or lot no. | Section | Township | Range | Lot Idn | Feet from the | NOTIFY OCD SPUD & TIME TO WITNESS CEMENTING OF ALL CASING STRINGS | unit |
| Proposed Pool 1 LOST TANK-DELAWARE (40299) | | | | | | | |

| | | | | |
|---------------------|-------------------------|------------------------|-----------------------|---------------------------------|
| Work Type Code N | Well Type Code O | Cable/Rotary ROTARY | Lease Type Code S | Ground Level Elevation 3535' |
| Multiple NO | Proposed Depth 8350' | Formation DELAWARE | Contractor UNKNOWN | Spud Date WHEN APPROVED |

Proposed Casing and Cement Program

| Hole Size | Casing Size | Casing weight/foot | Setting Depth | Sacks of Cement | Estimated TOC |
|-----------|-------------|--------------------|---------------|-----------------|---------------|
| 25" | 20" | NA | 40' | Redi-mix | SURFACE |
| 17½" | 13 3/8" | 48 | 800' | 800 Sx. | SURFACE |
| 11" | 8 5/8" | 32 | 4200' | 1500 Sx. | SURFACE |
| 7 7/8" | 5½" | 17 & 15.5 | 8350' | 1650 Sx | SURFACE |

22 Describe the proposed program. If this application is to DEEPEN or PLUG BACK, give the data on the present productive zone and proposed new productive zone.

Describe the blowout prevention program, if any. Use additional sheets if necessary.

1. Drill 25" hole to 40'. Set 40' of 20" conductor and cement to surface with Redi-mix.
2. Drill 17½" hole to 800'. Run and set 800' of 13 3/8" 48# H-40 casing. Cement with 800 Sx. of Class "C" cement + 2% CaCl, + ¼# Flocele/Sx. circulate cement.
3. Drill 11" hole to 4200'. Run and set 4200' of 8 5/8" 32# J-55 ST&C casing. Cement with 1500 Sx. of Class "C" cement + additives, circulate cement.
4. Drill 7 7/8" hole to 8350'. Run and set 8350' of 5½" casing as follows: 2350' of 5½" 17# J-55 LT&C, 5000' of 5½" 15.5# J-55 LT&C, 1000' of 5½" 17# J-55 LT&C. Cement in 3 stages with DV tools at 6100' & 3700' ±. Cement 1st stage with 650 Sx. of Class "H" cement + additives, 2nd stage cement with 600 Sx. of Class "C", + additives, 3rd stage cement with 400 Sx. of Class "C" cement + additives. Circulate cement to surface.

23 I hereby certify that the information given above is true and complete to the best of my knowledge and belief.

Signature:

Printed name: Joe T. Janica

Title: Agent

Date: 06/28/02

Phone: 505-391-8503

OIL CONSERVATION DIVISION

Approved by:

ORIGINAL SIGNED BY TIM W. GUM
DISTRICT II SUPERVISOR

Title:

Approval Date: JUL 01 2002

Expiration Date: JUL 01 2003

Conditions of Approval:

Attached ☐

DISTRICT I
P.O. Box 1980, Hobbs, NM 88241-1980

DISTRICT II
P.O. Drawer DD, Artesia, NM 88211-0719

DISTRICT III
1000 Rio Brazos Rd., Aztec, NM 87410

DISTRICT IV
P.O. BOX 2088, SANTA FE, N.M. 87504-2088

State of New Mexico
Energy, Minerals and Natural Resources Department

OIL CONSERVATION DIVISION
P.O. Box 2088
Santa Fe, New Mexico 87504-2088

Form C-102
Revised February 10, 1994
Submit to Appropriate District Office
State Lease - 4 Copies
Fee Lease - 3 Copies

WELL LOCATION AND ACREAGE DEDICATION PLAT

☐ AMENDED REPORT

| | | |
|--------------------|---|---------------------------------|
| API Number | Pool Code 40299 | Pool Name LOST TANK-DELAWARE |
| Property Code | Property Name LOST TANK 35 STATE | Well Number 6 |
| OGRID No. 17891 | Operator Name POGO PRODUCING COMPANY | Elevation 3535' |

Surface Location

| | | | | | | | | | |
|--------------------|---------------|------------------|---------------|---------|-----------------------|---------------------------|-----------------------|------------------------|----------------|
| UL or lot No. J | Section 35 | Township 21-S | Range 31-E | Lot Idn | Feet from the 1780 | North/South line SOUTH | Feet from the 1750 | East/West line EAST | County EDDY |
|--------------------|---------------|------------------|---------------|---------|-----------------------|---------------------------|-----------------------|------------------------|----------------|

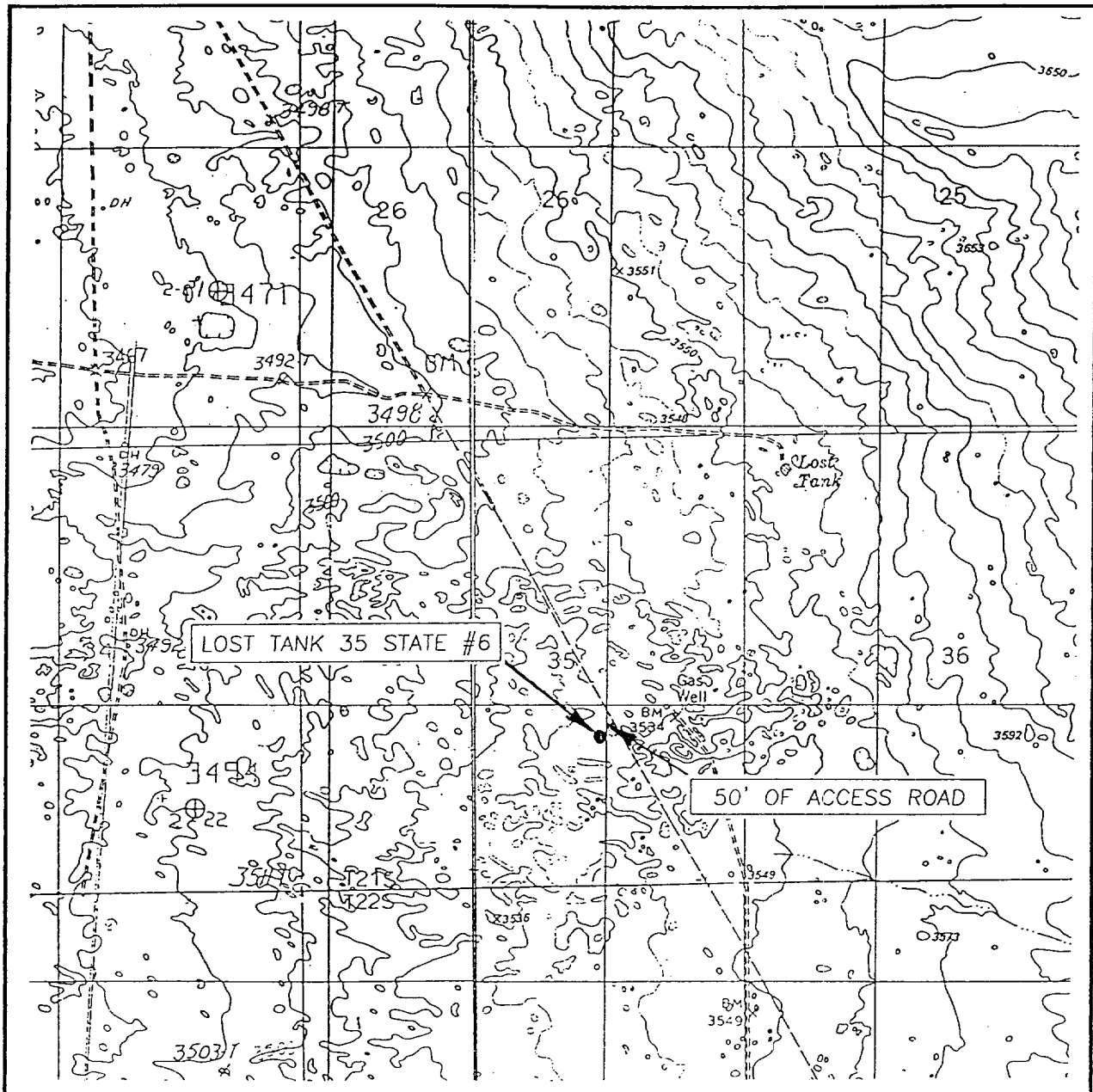
Bottom Hole Location If Different From Surface

| | | | | | | | | | |
|-----------------------|-----------------|--------------------|-----------|---------|---------------|------------------|---------------|----------------|--------|
| UL or lot No. | Section | Township | Range | Lot Idn | Feet from the | North/South line | Feet from the | East/West line | County |
| Dedicated Acres 40 | Joint or Infill | Consolidation Code | Order No. | | | | | | |

NO ALLOWABLE WILL BE ASSIGNED TO THIS COMPLETION UNTIL ALL INTERESTS HAVE BEEN CONSOLIDATED
OR A NON-STANDARD UNIT HAS BEEN APPROVED BY THE DIVISION

| | |
|--|--|
| | <p>OPERATOR CERTIFICATION</p> <p>I hereby certify the the information contained herein is true and complete to the best of my knowledge and belief.</p> <p><i>Joe T. Janica</i> Signature</p> <p>Joe T. Janica Printed Name</p> <p>Agent</p> <p>Title</p> <p>06/28/02 Date</p> |
| | <p>SURVEYOR CERTIFICATION</p> <p>I hereby certify that the well location shown on this plat was plotted from field notes of actual surveys made by me or under my supervision, and that the same is true and correct to the best of my belief.</p> <p>JUNE 27, 2002</p> <p>Date Surveyed</p> <p>Signature & Seal of Professional Surveyor</p> <p>RONALD J. EIDSON GARY EIDSON</p> <p>12641 6/27/02</p> <p>Certificate No. 3239 12641</p> |

LOCATION VERIFICATION MAP



SCALE: 1" = 2000'

CONTOUR INTERVAL: 10'

THE DIVIDE, N.M.

LIVINGSTON RIDGE, N.M.

SEC. 35 TWP. 21-S RGE. 31-E

SURVEY N.M.P.M.

COUNTY EDDY

DESCRIPTION 1780' FSL & 1750' FEL

ELEVATION 3535'

OPERATOR POGO PRODUCING COMPANY

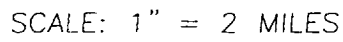
LEASE LOST TANK 35 STATE

U.S.G.S. TOPOGRAPHIC MAP

THE DIVIDE, LIVINGSTON RIDGE, N.M.

JOHN WEST SURVEYING
HOBBS, NEW MEXICO
(505) 393-3117

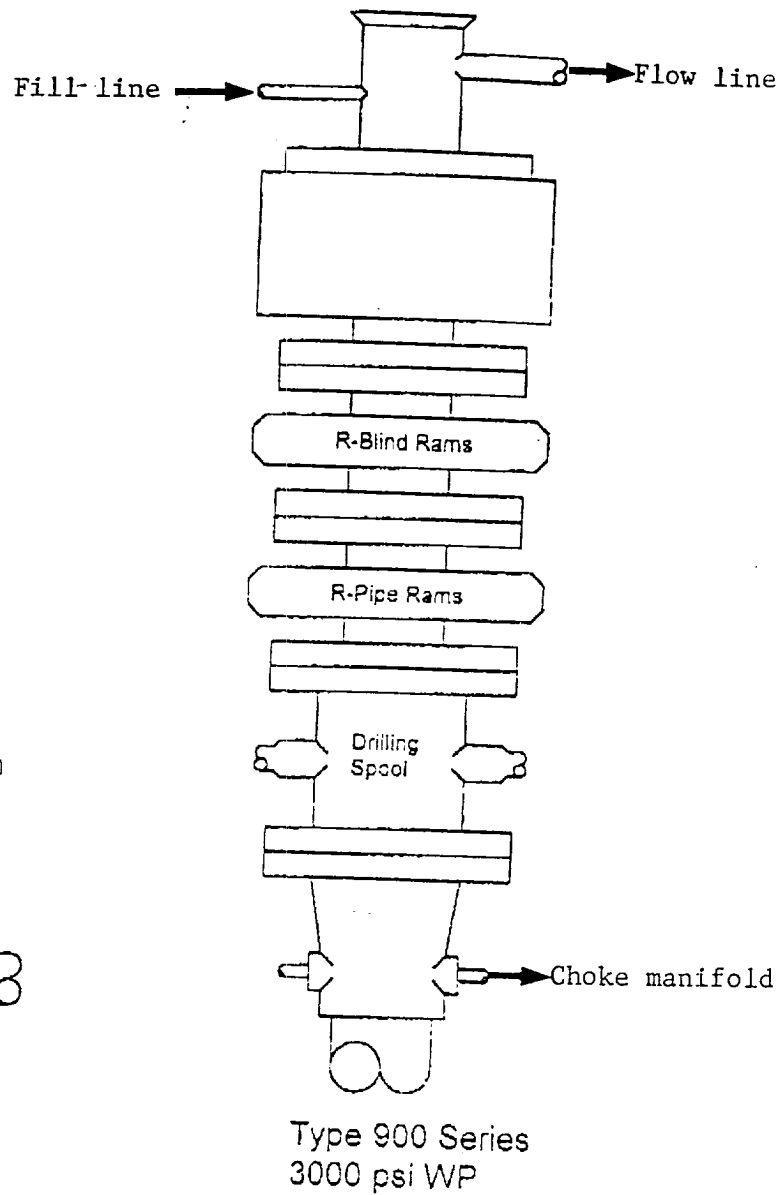
A decorative flourish consisting of a central vertical line with symmetrical, swirling, scroll-like patterns on either side. The word "NORTH" is written vertically in a serif font along the right side of the central line.



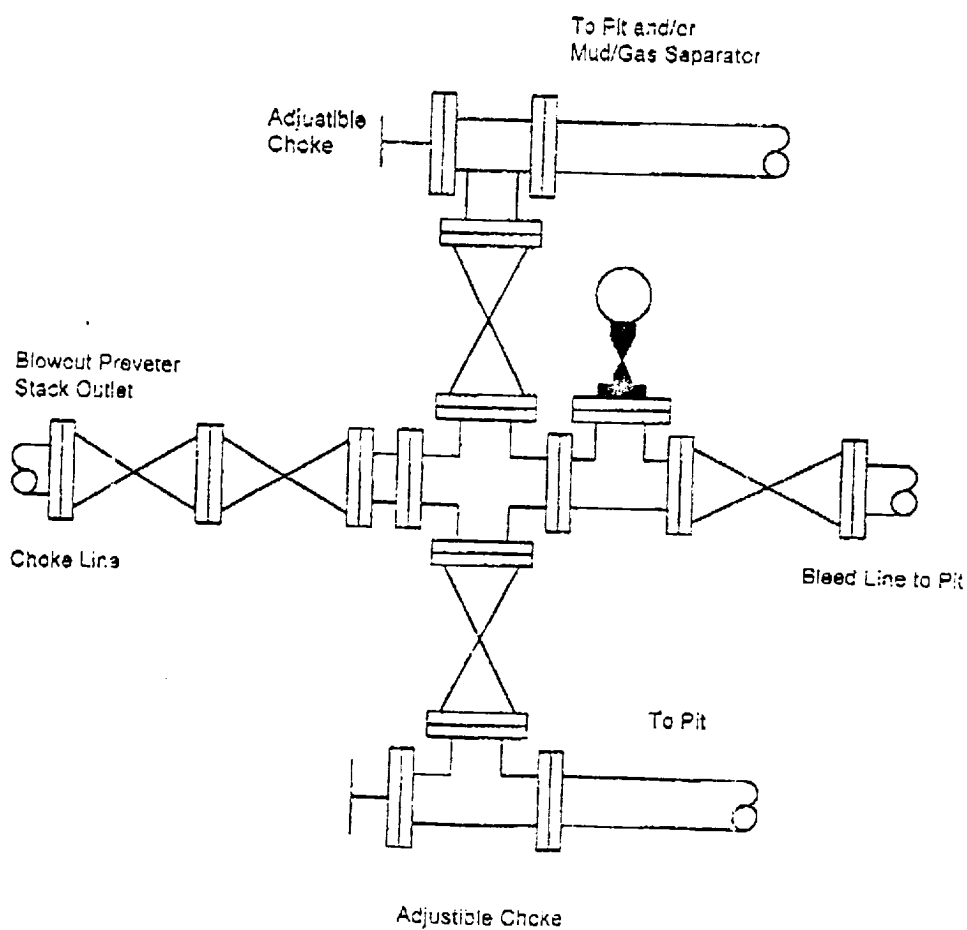
LEASE LOST TANK 35 STATE

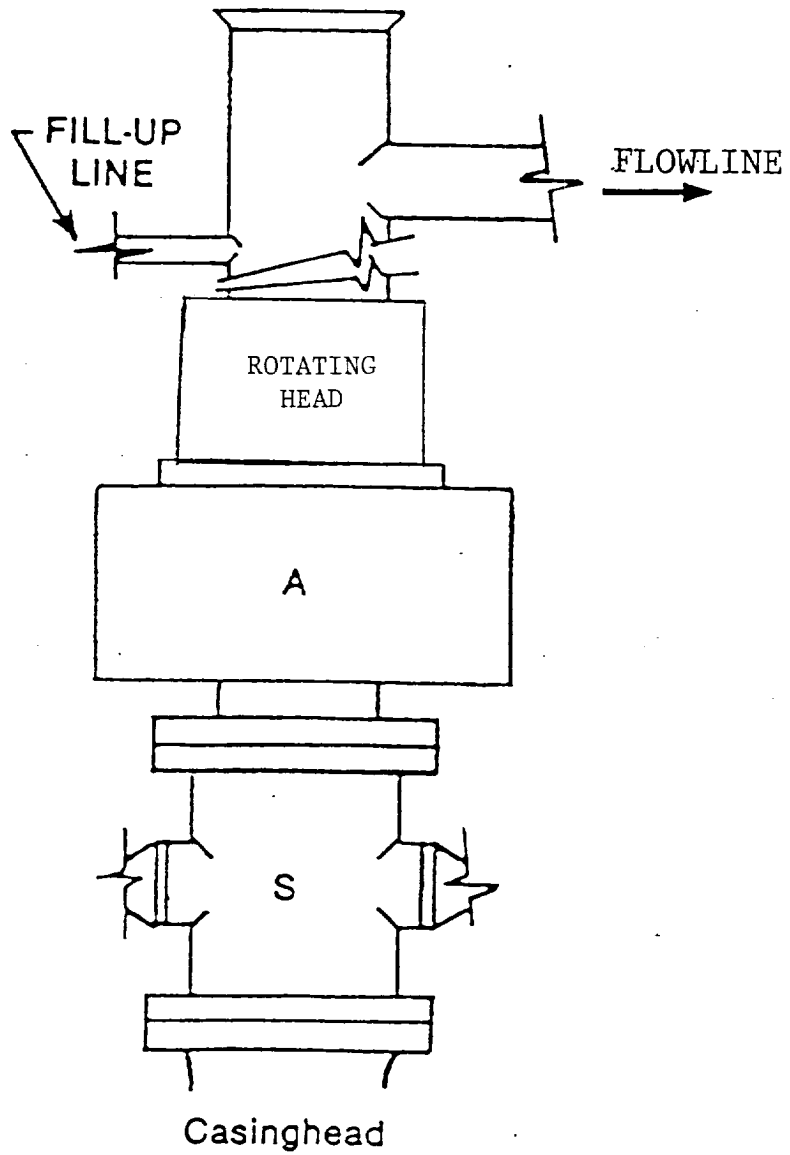
JOHN WEST SURVEYING
HOBBS, NEW MEXICO
(505) 393-3117

BLOWOUT PREVENTER SYSTEM



Choke Manifold Assembly for 3M WP System





ALTERNATE B.O.P. SYSTEM