

District I
1625 N. French Dr., Hobbs, NM 88240
District II
811 South First, Artesia, NM 88210
District III
1000 Rio Brazos Road, Aztec, NM 87410
District IV
2040 South Pacheco, Santa Fe, NM 87505

State of New Mexico
Energy Minerals and Natural Resources
JUL 2002
RECEIVED
OCD - ARTESIA
Oil Conservation Division
2040 South Pacheco
Santa Fe, NM 87505

Form C-101
Revised March 17, 1999

15F
BLM
Submitting to appropriate District Office
State Lease - 6 Copies
Fee Lease - 5 Copies
☐ AMENDED REPORT

APPLICATION FOR PERMIT TO DRILL, RE-ENTER, DEEPEN, PLUGBACK, OR ADD A ZONE

Operator Name and Address POGO PRODUCING COMPANY P.O. BOX 10340 MIDLAND, TEXAS 79702-4345		OGRIID Number 17891
Property Code 26857	Property Name STATE "W"	API Number 30-015-32389
		Well No. 4

Surface Location

UL or lot no.	Section	Township	Range	Lot Idn	Feet from the	North/South line	Feet from the	East/West line	County
L	3	23S	26E		1980'	SOUTH	330'	WEST	EDDY CO.

Proposed Bottom Hole Location If Different From Surface

UL or lot no.	Section	Township	Range	Lot Idn	Feet from the	North/South line	Feet from the	East/West line	County

Proposed Pool 1 CARLSBAD DELAWARE-SOUTH (9692)	Proposed Pool 2
---	-----------------

Work Type Code N	Well Type Code O	Cable/Rotary ROTARY	Lease Type Code S	Ground Level Elevation 3307'
Multiple NO	Proposed Depth 3500'	Formation DELAWARE	Contractor UNKNOWN	Spud Date WHEN APPROVED

Proposed Casing and Cement Program

Hole Size	Casing Size	Casing weight/foot	Setting Depth	Sacks of Cement	Estimated TOC
25"	20"	NA	40'	Redi-mix	SURFACE
17½"	13 3/8"	48	500'	500 Sx.	SURFACE
12¼"	8 5/8"	24	1700'	1000 Sx.	SURFACE
7 7/8"	5½"	15.5	3500'	750 Sx.	1500' FS.
WITNESS 13 3/8" casing					

Describe the proposed program. If this application is to DEEPEN or PLUG BACK, give the data on the present productive zone and proposed new productive zone. Describe the blowout prevention program, if any. Use additional sheets if necessary.

1. Drill 25" hole to 40'. Set 40' of 20" conductor pipe and cement to surface with Redi-mix.
2. Drill 17½" hole to 500'. Run and set 500' of 13 3/8" H-40 48# ST&C casing. Cement with 500 Sx. of Class "C" cement + 2% CaCl, + ¼# Flocele/Sx. circulate cement to surface.
3. Drill 12¼" hole to 1700'. Run and set 1700' of 24# J-55 ST&C casing. Cement with 1000 Sx. of Class "C" cement + 2% CaCl, + ¼# Flocele/Sx, circulate cement to surface.
4. Drill 7 7/8" hole to 3500'. Run and set 3500' of 5½" 15.5# J-55 ST&C casing. Cement with 750 Sx. of Class "C" cement + 2% CaCl, + ¼# Flocls/Sx., estimate top of cement 1500' from surface.

I hereby certify that the information given above is true and complete to the best of my knowledge and belief.

Signature:

Printed name: Joe T. Janica

Title: Agent

OIL CONSERVATION DIVISION

Approved by:

ORIGINAL SIGNED BY TIM W. GUM
DISTRICT II SUPERVISOR

Title:

Approval Date:

JUL 25 2002

Expiration Date:

JUL 25 2003

DISTRICT I
P.O. Box 1980, Hobbs, NM 88241-1980

DISTRICT II
P.O. Drawer DD, Artesia, NM 88211-0719

DISTRICT III
1000 Rio Brazos Rd., Artec, NM 87410

DISTRICT IV
P.O. BOX 2088, SANTA FE, N.M. 87504-2088

State of New Mexico
Energy, Minerals and Natural Resources Department

OIL CONSERVATION DIVISION
P.O. Box 2088
Santa Fe, New Mexico 87504-2088

Form C-102
Revised February 10, 1994
Submit to Appropriate District Office
State Lease - 4 Copies
Fee Lease - 3 Copies

WELL LOCATION AND ACREAGE DEDICATION PLAT

☐ AMENDED REPORT

API Number	Pool Code 9692	Pool Name CARLSBAD DELAWARE-SOUTH
Property Code 26857	Property Name STATE "W"	Well Number 4
OGRD No. 17891	Operator Name POGO PRODUCING COMPANY	Elevation 3307'

Surface Location

UL or lot No. L	Section 3	Township 23-S	Range 26-E	Lot Idn	Feet from the 1980	North/South line SOUTH	Feet from the 330	East/West line WEST	County EDDY
--------------------	--------------	------------------	---------------	---------	-----------------------	---------------------------	----------------------	------------------------	----------------

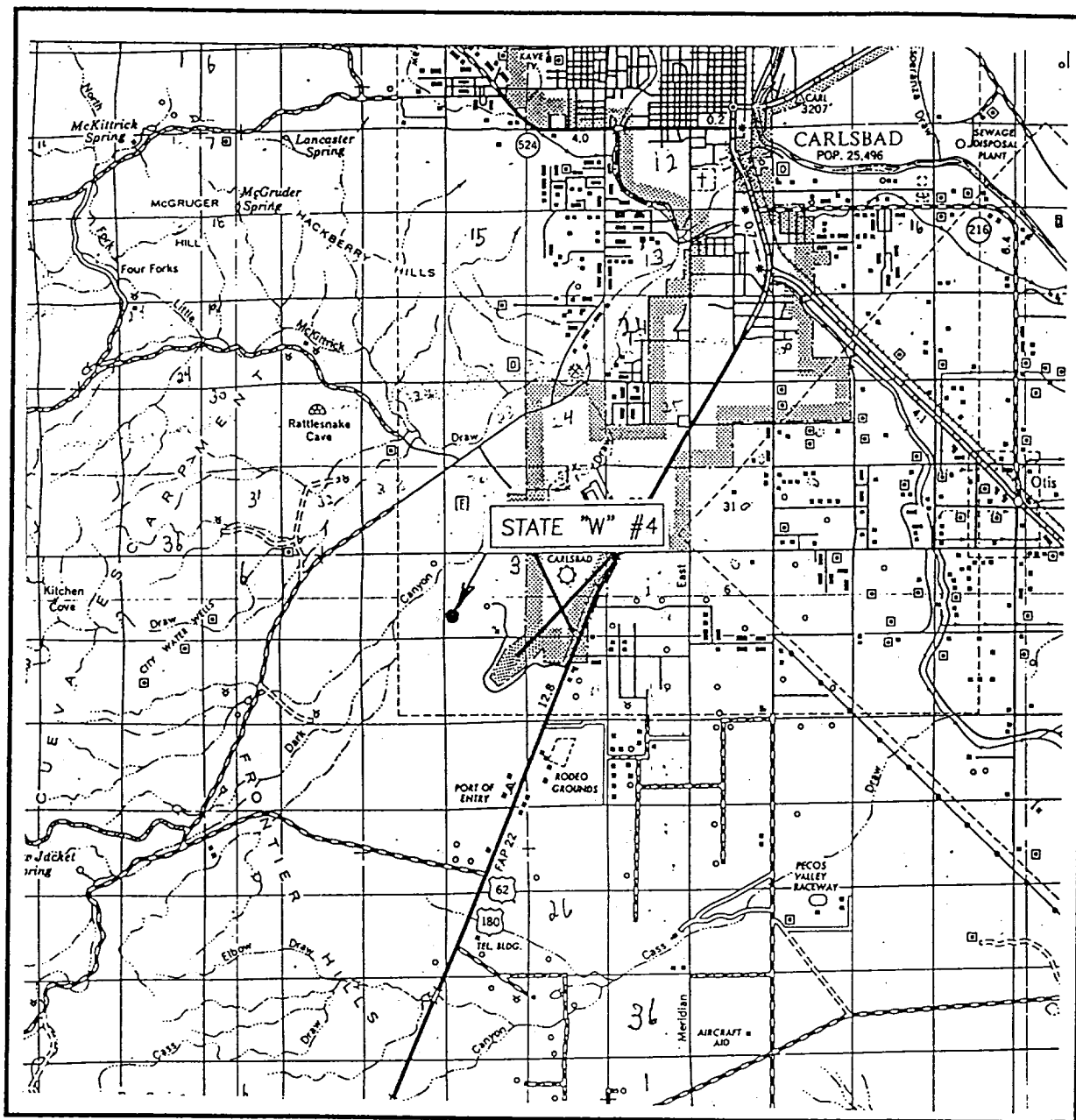
Bottom Hole Location If Different From Surface

UL or lot No.	Section	Township	Range	Lot Idn	Feet from the	North/South line	Feet from the	East/West line	County
Dedicated Acres 40	Joint or Infill	Consolidation Code	Order No.						

NO ALLOWABLE WILL BE ASSIGNED TO THIS COMPLETION UNTIL ALL INTERESTS HAVE BEEN CONSOLIDATED
OR A NON-STANDARD UNIT HAS BEEN APPROVED BY THE DIVISION

LOT 4	LOT 3	LOT 2	LOT 1
<p>GEODETIC COORDINATES NAD 27 NME Y = 484411.6 X = 513995.5 LAT. 32°19'54.32"N LONG. 104°17'16.88"W</p>			
<p>330'</p> <p>1980'</p>			
<p>OPERATOR CERTIFICATION</p> <p>I hereby certify the the information contained herein is true and complete to the best of my knowledge and belief.</p> <p><i>Joe T. Janica</i> Signature Joe T. Janica Printed Name Agent Title 07/18/02 Date</p> <p>SURVEYOR CERTIFICATION</p> <p>I hereby certify that the well location shown on this plat was plotted from field notes of actual surveys made by me or under my supervision, and that the same is true and correct to the best of my belief.</p> <p>JULY 11, 2002</p> <p>Date Surveyed Signature & Seal of Professional Surveyor A.W.B. <i>Gary B. Edson</i> 7/15/02 02.11.0519</p> <p>Certificate No. RONALD J. EDSON 3239 GARY EDSON 12641</p>			

VICINITY MAP



SCALE: 1" = 2 MILES

SEC. 3 TWP. 23-S RGE. 26-E

SURVEY N.M.P.M.

COUNTY EDDY

DESCRIPTION 1980' FSL & 330' FWL

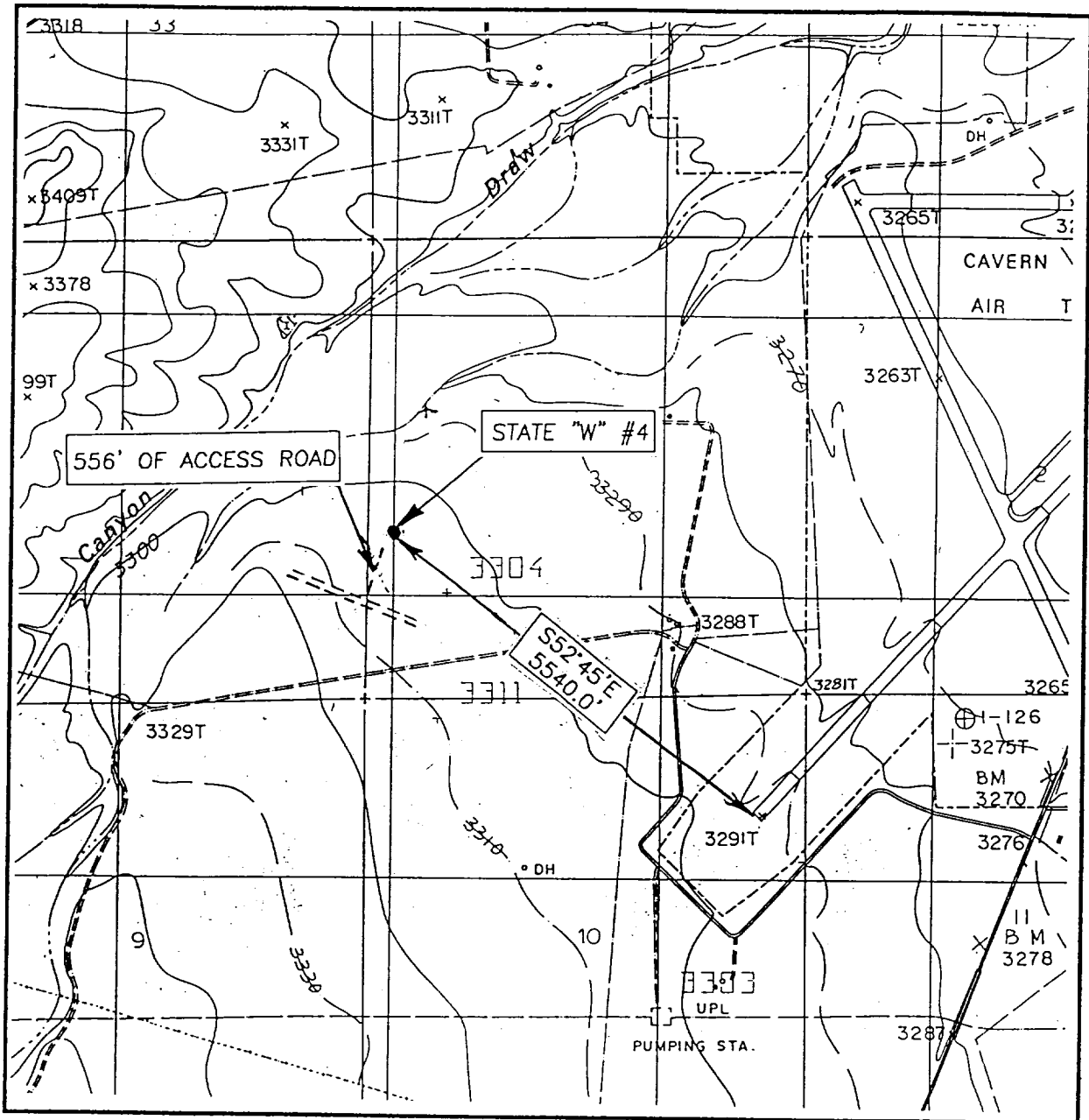
ELEVATION 3307'

OPERATOR POGO PRODUCING COMPANY

LEASE STATE "W"

JOHN WEST SURVEYING
HOBBS, NEW MEXICO
(505) 393-3117

LOCATION VERIFICATION MAP



SCALE: 1" = 2000'

CONTOUR INTERVAL: 10'
KITCHEN COVE, N.M.

SEC. 3 TWP. 23-S RGE. 26-E

SURVEY N.M.P.M.

COUNTY EDDY

DESCRIPTION 1980' FSL & 330' FWL

ELEVATION 3307'

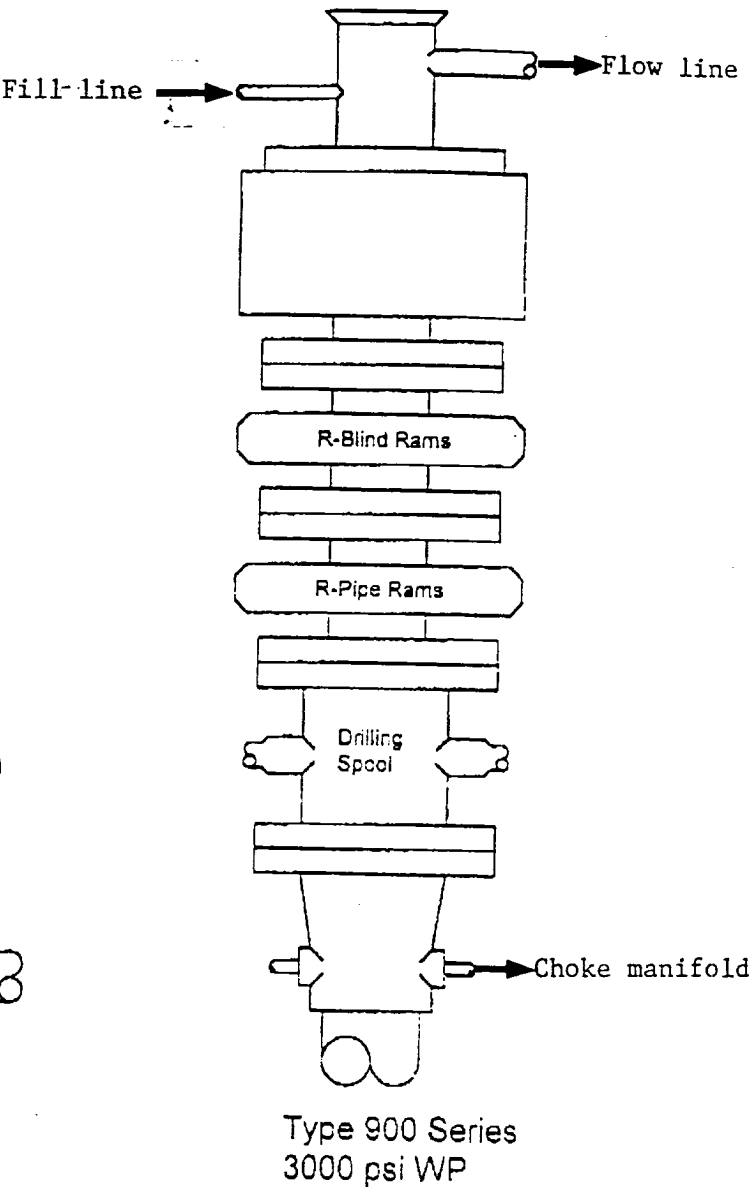
OPERATOR POGO PRODUCING COMPANY

LEASE STATE "W"

U.S.G.S. TOPOGRAPHIC MAP
KITCHEN COVE, N.M.

JOHN WEST SURVEYING
HOBBS, NEW MEXICO
(505) 393-3117

BLOWOUT PREVENTER SYSTEM



Choke Manifold Assembly for 3M WP System

