

District II
1301 W. Grand Avenue, Artesia, NM 88210
District III
1000 Rio Brazos Road, Aztec, NM 87410
District IV
1220 S. St. Francis Dr., Santa Fe, NM 87505

Energy Minerals and Natural Resources

Oil Conservation Division
1220 South St. Francis Dr.
Santa Fe, NM 87505

Revised March 17, 1999

Submit to appropriate District Office
State Lease - 6 Copies
Fee Lease - 5 Copies

☐ AMENDED REPORT

APPLICATION FOR PERMIT TO DRILL, RE-ENTER, DEEPEN, PLUGBACK, OR ADD A ZONE

¹ Operator Name and Address POGO PRODUCING COMPANY P.O. BOX 10340 MIDLAND, TEXAS 79702		² OGRID Number 17891
³ Property Code 30410	⁵ Property Name DAVIS "8" COM.	⁴ API Number 30 - 015 - 32405
		⁶ Well No. 1

⁷ Surface Location

UL or lot no.	Section	Township	Range	Lot 1ch	Feet from the	North/South line	Feet from the	East/West line	County
M	8	20S	27E		660'	SOUTH	1150'	WEST	EDDY CO.

⁸ Proposed Bottom Hole Location If Different From Surface

UL or lot no.	Section	Township	Range	Lot 1ch	Feet from the	North/South line	Feet from the	East/West line	County

⁹ Proposed Pool 1 WILDCAT - MORROW	¹⁰ Proposed Pool 2
--	-------------------------------

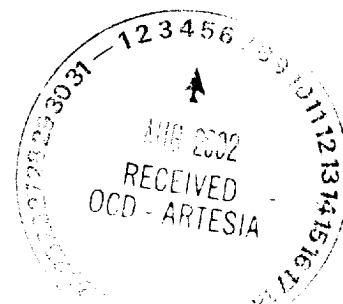
¹¹ Work Type Code N	¹² Well Type Code G	¹³ Cable/Rotary ROTARY	¹⁴ Lease Type Code P	¹⁵ Ground Level Elevation 3338'
¹⁶ Multiple NO	¹⁷ Proposed Depth 10,700'	¹⁸ Formation MORROW	¹⁹ Contractor UNKNOWN	²⁰ Spud Date WHEN APPROVED

²¹ Proposed Casing and Cement Program

Hole Size	Casing Size	Casing weight/foot	Setting Depth	Sacks of Cement	Estimated TOC
25"	20"	NA	40'	Redi-mix	Surface
17½"	13 3/8	48	500'	550 Sx.	Surface
12¼"	9 5/8"	40.5	3000'	1200 Sx.	Surface
* 8½" - 7 7/8"	7" or 5½"	26# or 17#	9000'±, or 10700'		2000' from sur.
6 1/8"	5"	18	liner TD-8800'	150 Sx.	Liner hanger

²² Describe the proposed program. If this application is to DEEPEN or PLUG BACK, give the data on the present productive zone and proposed new productive zone.
Describe the blowout prevention program, if any. Use additional sheets if necessary.

SEE ATTACHED SHEET

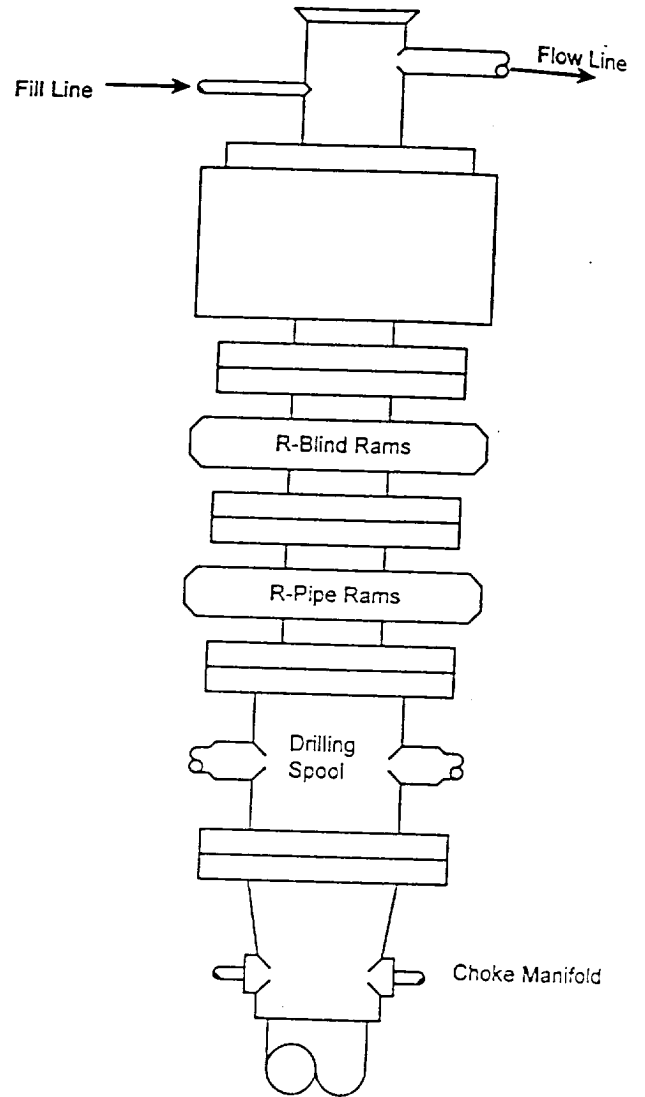


²³ I hereby certify that the information given above is true and complete to the best of my knowledge and belief. Signature: <u>Joe T. Janica</u> Printed name: Joe T. Janica Title: Agent Date: 08/03/02		OIL CONSERVATION DIVISION Approved: ORIGINAL SIGNED BY TIM W. GUM DISTRICT II SUPERVISOR Title: Approval Date: AUG 12 2002 Expiration Date: AUG 12 2003 Conditions of Approval:	
Phone: 505-391-8503			

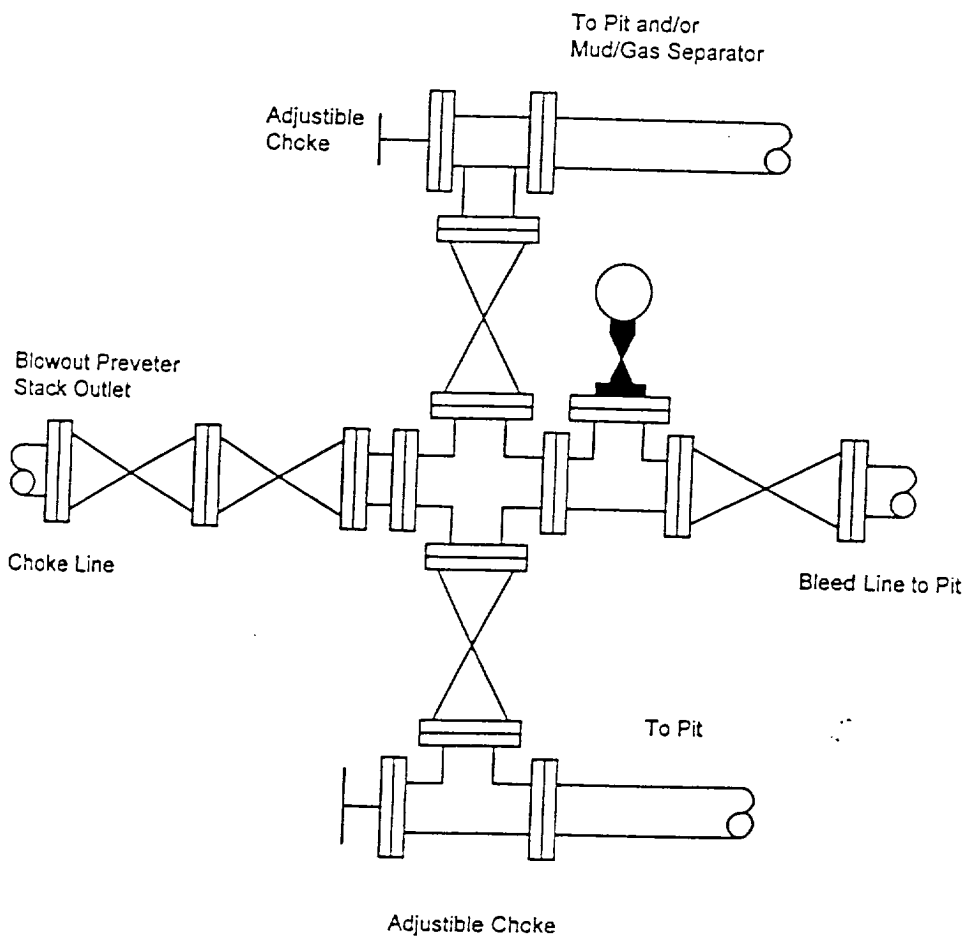
POGO PRODUCING COMPANY
DAVIS "8" COM. # 1
UNIT "M" SECTION 8
T20S-R27E EDDY CO. NM

1. Drill 25" hole to 40'. Set 40' of 20" conductor pipe and cement to surface with Redi-mix.
2. Drill 17½" hole with fresh water to 500'. Run and set 500' of 13 3/8" 48# H-40 ST&C casing. Cement with 550 Sx. of Class "C" cement + 2% CaCl, + ¼# Flocele/Sx. Circulate cement to surface.
3. Drill 12¼" hole with brine water to 3000'. Run and set 3000' of 9 5/8" 40.5# J-55 ST&C casing. Cement with 1200 Sx. of Class "C" cement + 2% CaCl, + ¼# Flocele/Sx. Circulate cement to surface.
- * 4. Drill 8½" hole to 9000' through the Cisco if no problems occur with lost circulation reduce hole to 7 7/8" and drill to a total depth of 10,77'. Run and set 10,700' of 5½" casing as follows: 2700' of 17# N-80 LT&C, 6000' of 17# J-55 LT&C, 2000' of 17# N-80 LT&C. Cement in 3 stages with DV tools at 9100' & 6000' ±. cement with 1500 Sx of Class "H" + additives, estimate top of cement 2000' from surface.
- * 5. If lost circulation problems occur in the Cisco drill through the Cisco and run 7" 26# J-55 LT&C casing across problem zones. Cement with Class "H" and Class "C" cement + additives bring cement back to 2000' from surface. Drill 6 1/8" hole to 10,700' Run a 5"18# ST&C liner from TD back to 8800'±. Cement with 150 Sx. of Class "H" Premium cement + additives.

5000 PS



Choke Manifold Assembly for 5M WP System



Type 1500 SERIES
5000 psi WP

DISTRICT I
1625 N. French Dr., Hobbs, NM 88240

DISTRICT II
811 South First, Artesia, NM 88210

DISTRICT III
1000 Rio Brazos Rd., Aztec, NM 87410

DISTRICT IV
2040 South Pacheco, Santa Fe, NM 87505

State of New Mexico
Energy, Minerals and Natural Resources Department

Form C-102
Revised March 17, 1999

Submit to Appropriate District Office
State Lease - 4 Copies
Fee Lease - 3 Copies

OIL CONSERVATION DIVISION

2040 South Pacheco
Santa Fe, New Mexico 87504-2088

☐ AMENDED REPORT

WELL LOCATION AND ACREAGE DEDICATION PLAT

API Number	Pool Code	Pool Name WILDCAT-MORROW
Property Code	Property Name DAVIS "8" COM	Well Number 1
OGRID No. 17891	Operator Name POGO PRODUCING COMPANY	Elevation 3338'

Surface Location

UL or lot No. M	Section 8	Township 20 S	Range 27 E	Lot Idn	Feet from the 660	North/South line SOUTH	Feet from the 1150	East/West line WEST	County EDDY
--------------------	--------------	------------------	---------------	---------	----------------------	---------------------------	-----------------------	------------------------	----------------

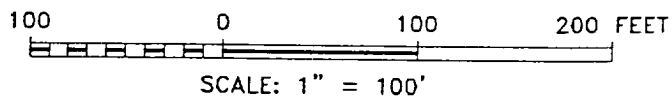
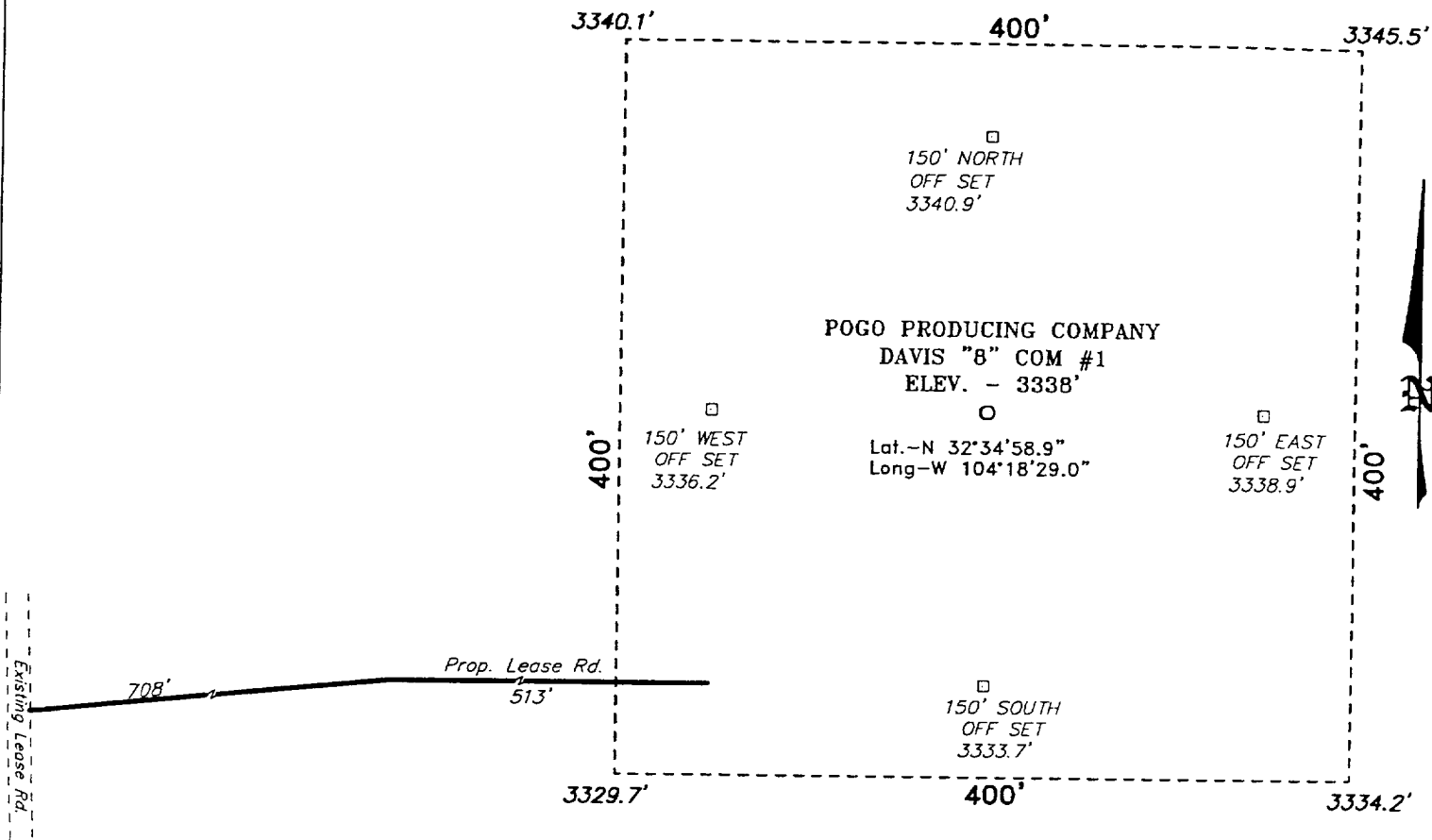
Bottom Hole Location If Different From Surface

UL or lot No.	Section	Township	Range	Lot Idn	Feet from the	North/South line	Feet from the	East/West line	County
Dedicated Acres 320	Joint or Infill	Consolidation Code	Order No.						

NO ALLOWABLE WILL BE ASSIGNED TO THIS COMPLETION UNTIL ALL INTERESTS HAVE BEEN CONSOLIDATED
OR A NON-STANDARD UNIT HAS BEEN APPROVED BY THE DIVISION

	OPERATOR CERTIFICATION I hereby certify the the information contained herein is true and complete to the best of my knowledge and belief. Signature Joe T. Janica Printed Name Agent Title 08/03/02 Date	
	SURVEYOR CERTIFICATION I hereby certify that the well location shown on this plat was plotted from field notes of actual surveys made by me or under my supervision and that the same is true and correct to the best of my belief. 07-31-2002 Date Surveyed Signature & Seal of Professional Surveyor W.C. No. 2658 Certificate No. Gary L. Jones 7977 BASIN SURVEYS	

SECTION 8, TOWNSHIP 20 SOUTH, RANGE 27 EAST, N.M.P.M.,
EDDY COUNTY, NEW MEXICO.



Directions to Location:

FROM THE JUNCTION OF CO. RD. 206 AND CO. RD. 34(LAKE ROAD), GO WEST ON CO. RD. 34 FOR 6.8 MILES TO OLD LEASE ROAD; THENCE NORTH ON OLD LEASE ROAD FOR 0.6 MILE TO PROPOSED LEASE ROAD.

BASIN SURVEYS P.O. BOX 1786 - HOBBS, NEW MEXICO

W.O. Number: 2658

Drawn By: K. GOAD

Date: 08-01-2002

Disk: KJG CD#4 - 2658A.DWG

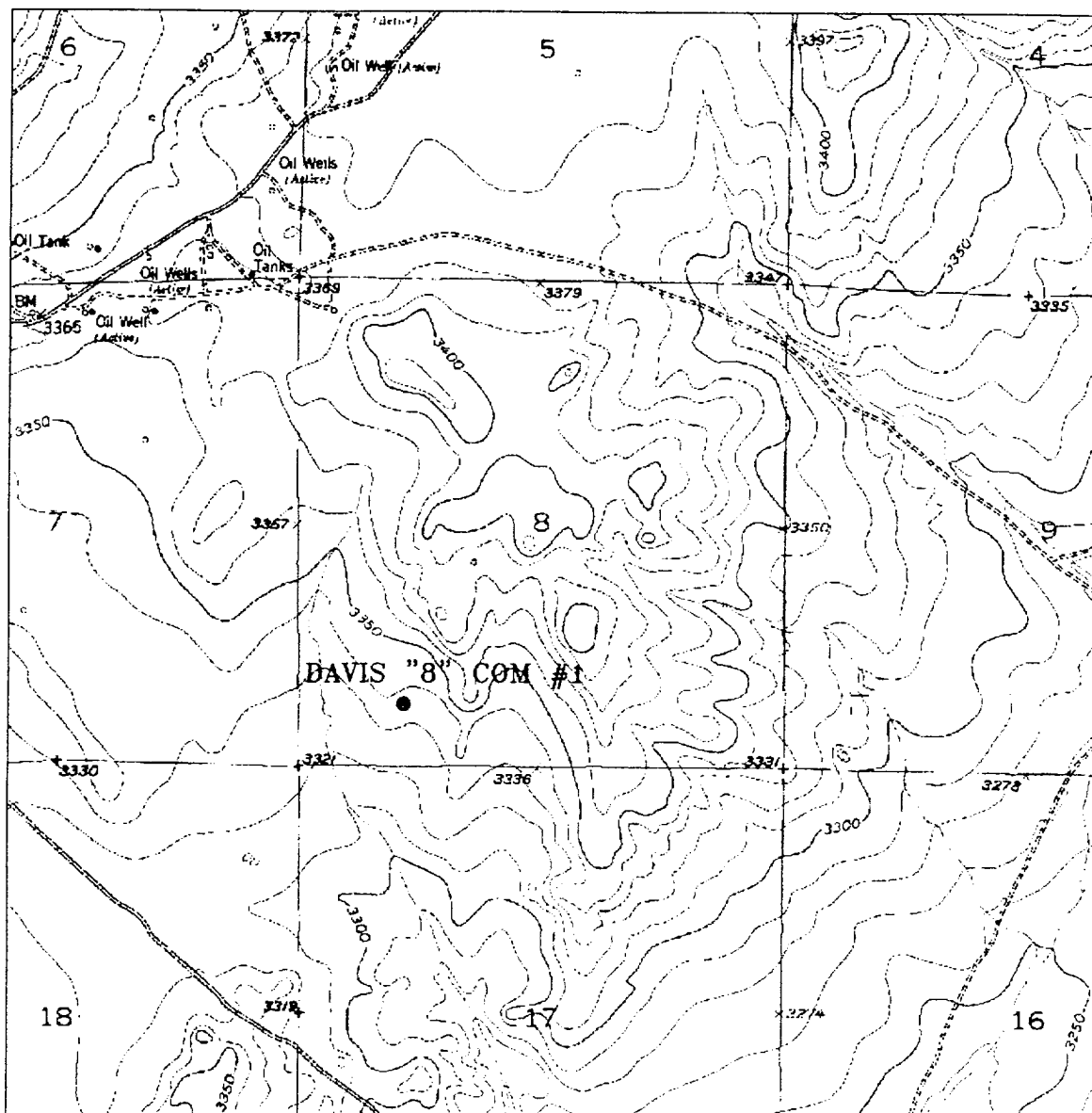
POGO PRODUCING CO.

REF: DAVIS "8" COM #1 / Well Pad Topo

THE DAVIS "8" COM No. 1 LOCATED 660' FROM THE SOUTH LINE AND 1150' FROM THE WEST LINE OF SECTION 8, TOWNSHIP 20 SOUTH, RANGE 27 EAST, N.M.P.M., EDDY COUNTY, NEW MEXICO.

Survey Date: 07-31-2002

Sheet 1 of 1 Sheets



DAVIS "8" COM #1

Located at 660' FSL and 1150' FWL

Section 8, Township 20 South, Range 27 East,
N.M.P.M., Eddy County, New Mexico.



focused on excellence
in the oilfield

P.O. Box 1786
1120 N. West County Rd.
Hobbs, New Mexico 88241
(505) 393-7316 - Office
(505) 392-3074 - Fax
basinsurveys.com

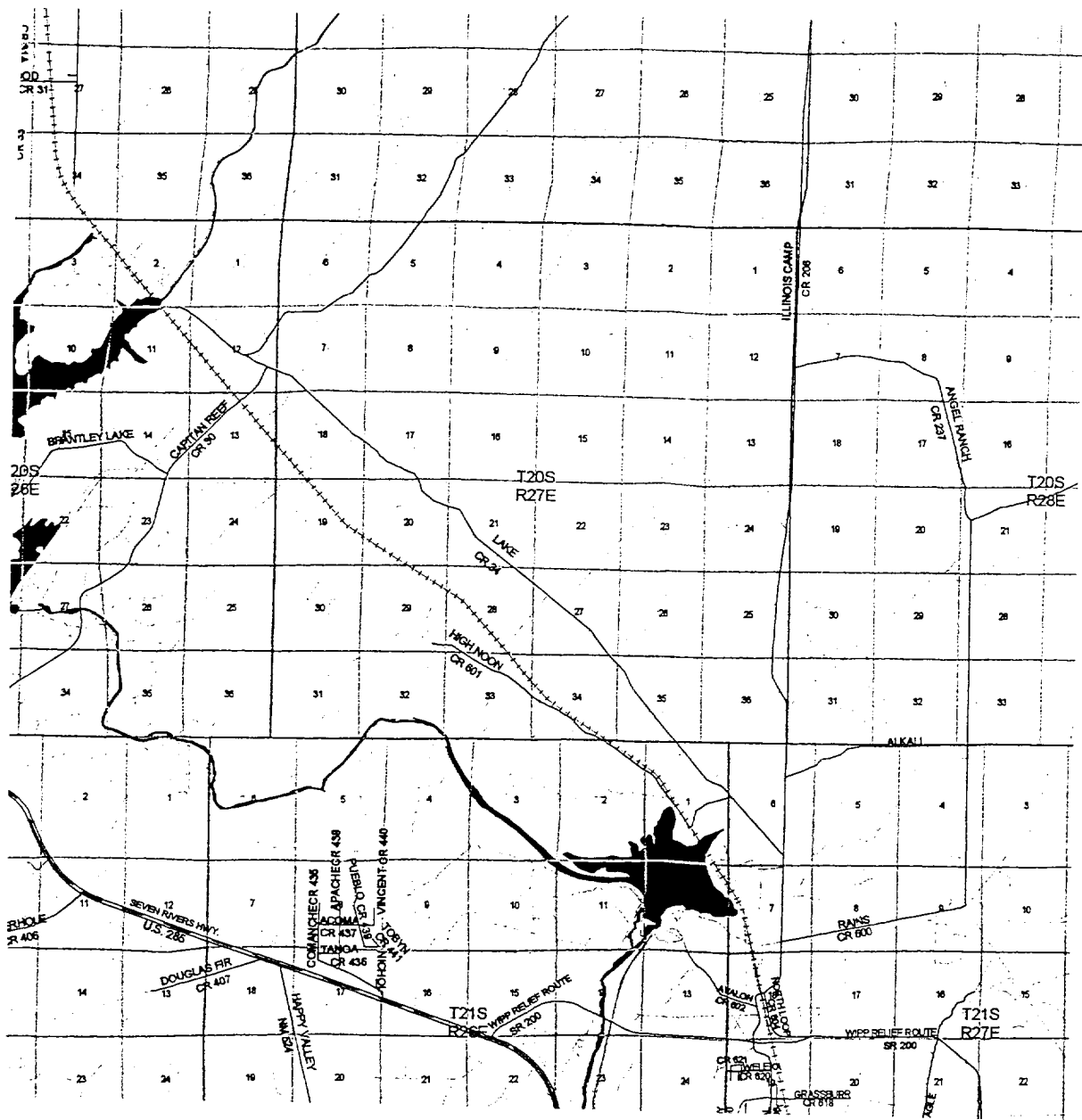
W.O. Number: 2658AA - KJC CD#5

Survey Date: 07-31-2002

Scale: 1" = 2000'

Date: 08-01-2002

**POGO
PRODUCING
COMPANY**



DAVIS "8" COM #1
 Located at 660' FSL and 1150' FWL
 Section 8, Township 20 South, Range 27 East,
 N.M.P.M., Eddy County, New Mexico.

basin
surveys
 focused on excellence
 in the oilfield

P.O. Box 1786
 1120 N. West County Rd.
 Hobbs, New Mexico 88241
 (505) 393-7316 - Office
 (505) 392-3074 - Fax
 basinsurveys.com

W.O. Number: 2658AA - KJG CD#5

Survey Date: 07-31-2002

Scale: 1" = 2 MILES

Date: 08-01-2002

POGO
PRODUCING
COMPANY