

District I  
1625 N. French Dr., Hobbs, NM 88240  
District II  
811 S. 1st Street, Artesia, NM 88210  
District III  
1000 Rio Brazos Rd., Aztec, NM 874  
District IV  
2040 South Pacheco, Santa Fe, NM 8

State of New Mexico  
Energy, Minerals & Natural Resources

Form C-101'

Revised March 17, 1999

**Cement to cover all oil, gas and  
water bearing zones.**

RECEIVED  
OCD - ARTESIA  
AUG 2002

Submit to appropriate District Office  
State Lease - 6 Copies  
Fee Lease - 5 Copies

☐ AMENDED REPORT

**APPLICATION FOR PERMIT TO DRILL, RE-ENTER, DEEPEN, PLUG BACK, OR ADD A ZONE**

<sup>1</sup> Operator Name and Address KERR-McGEE OIL & GAS ONSHORE LLC P.O. Box 809004 DALLAS, TX 75380-9004		<sup>2</sup> OGRID Number 012558
<sup>4</sup> Property Code 24515	<sup>5</sup> Property Name CONOCO STATE	<sup>3</sup> API Number 30-015-32413
		<sup>6</sup> Well No. 8

**<sup>7</sup> Surface Location**

UL or lot no.	Section	Township	Range	Lot. Idn	Feet from the	North/South Line	Feet from the	East/West line	County
I	2	22 S	23 E		1710'	SOUTH	880'	EAST	EDDY

**<sup>8</sup> Proposed Bottom Hole Location If Different From Surface**

UL or lot no.	Section	Township	Range	Lot. Idn	Feet from the	North/S
<sup>9</sup> Proposed Pool 1 INDIAN BASIN (UPPER PENN) ASSOCIATED						

**NOTIFY OCD SPUD & TIME  
TO WITNESS 8 5/8" CASING**

<sup>11</sup> Work Type Code N	<sup>12</sup> Well Type Code G	<sup>13</sup> Cable/Rotary ROTARY	<sup>14</sup> Lease Type Code S	<sup>15</sup> Ground Level Elevation 3933'
<sup>16</sup> Multiple NO	<sup>17</sup> Proposed Depth 8200'	<sup>18</sup> Formation UPPER PENN	<sup>19</sup> Contractor NOT YET AWARDED	<sup>20</sup> Spud Date 09-01-02

**<sup>21</sup> Proposed Casing and Cement Program**

Hole Size	Casing Size	Casing weight/foot	Setting Depth	Sacks of Cement	Estimated TOC
18 1/2"	16"	84#	+ - 40'	GROUTED IN	SURFACE
14 3/4"	9 5/8"	36#	1300'	960 SXS	SURFACE
8 3/4"	7"	23# & 26#	8200'	545 SXS	* 4600'

<sup>22</sup> Describe the proposed program. If this application is to DEEPEN or PLUG BACK, give the data on the present productive zone and proposed new productive zone.

Describe the blowout prevention program, if any. Use additional sheets if necessary.

BOP & choke manifold will be 3M systems. Accumulator volume will be sufficient to provide an open and closing of preventers with 50% reserve. A drill pipe full opening safety valve will be kept on the rig floor in the open position at all times during drilling operations. An upper and lower kelly cock will be used.

Test Procedure: Ram type preventers will be tested to 70% of casing burst pressure. Annular preventer will be tested to 1500 psi.

<sup>23</sup> I hereby certify that the information given above is true and complete to the best of my knowledge and belief.

Signature:

*Beverly Hoffman*

Printed name: BEVERLY HOFFMAN

Title: PRORATION ANALYST

Date: 08-22-2002

Phone: 972 715-4830

OIL CONSERVATION DIVISION

Approved by:

**ORIGINAL SIGNED BY TIM W. GUM  
DISTRICT II SUPERVISOR**

Title:

Approval Date: AUG 27 2002

Expiration Date: AUG 27 2003

Conditions of Approval:

Attached ☐

DISTRICT I  
P.O. Box 1980, Hobbs, NM 88241-1980

State of New Mexico  
Energy, Minerals and Natural Resources Department

Form C-102  
Revised February 10, 1994  
Submit to Appropriate District Office  
State Lease - 4 Copies  
Fee Lease - 3 Copies

DISTRICT II  
P.O. Drawer DD, Artesia, NM 88211-0719

OIL CONSERVATION DIVISION  
P.O. Box 2088  
Santa Fe, New Mexico 87504-2088

DISTRICT III  
1000 Rio Brazos Rd., Aztec, NM 87410

DISTRICT IV  
P.O. BOX 2088, SANTA FE, N.M. 87504-2088

WELL LOCATION AND ACREAGE DEDICATION PLAT

☐ AMENDED REPORT

API Number		Pool Code	Pool Name
Property Code	Property Name CONOCO STATE		Well Number 8
OGRID No.	Operator Name KERR-McGEE OIL & GAS ONSHORE, LLC		Elevation 3933'

Surface Location

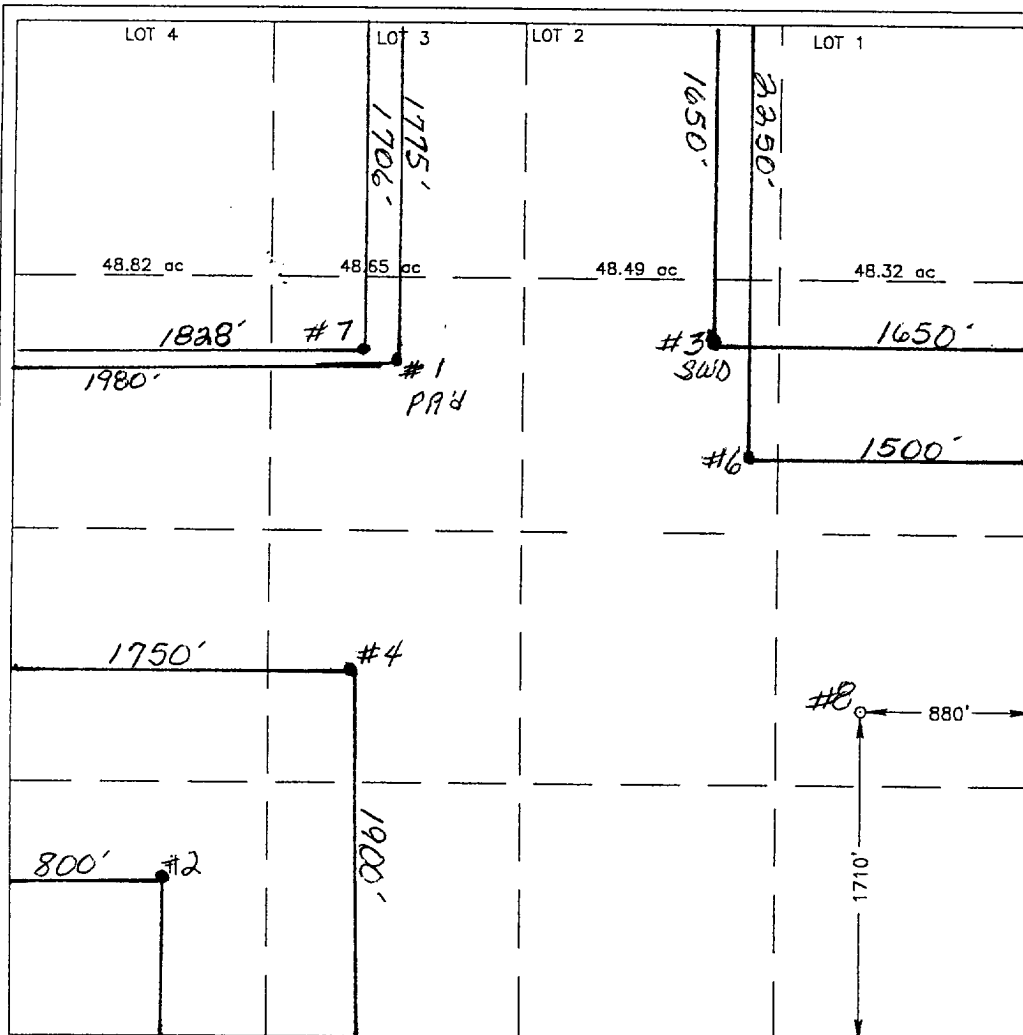
UL or lot No.	Section	Township	Range	Lot Idn	Feet from the	North/South line	Feet from the	East/West line	County
1	2	22-S	23-E		1710	SOUTH	880	EAST	EDDY

Bottom Hole Location If Different From Surface

UL or lot No.	Section	Township	Range	Lot Idn	Feet from the	North/South line	Feet from the	East/West line	County

Dedicated Acres	Joint or Infill	Consolidation Code	Order No.
32c			

NO ALLOWABLE WILL BE ASSIGNED TO THIS COMPLETION UNTIL ALL INTERESTS HAVE BEEN CONSOLIDATED  
OR A NON-STANDARD UNIT HAS BEEN APPROVED BY THE DIVISION



OPERATOR CERTIFICATION

I hereby certify the the information  
contained herein is true and complete to the  
best of my knowledge and belief.

*Beverly Hoffman*  
Signature  
Beverly Hoffman  
Printed Name  
Promotion Analyst  
Title  
8-21-02  
Date

SURVEYOR CERTIFICATION

I hereby certify that the well location shown  
on this plat was plotted from field notes of  
actual surveys made by me or under my  
supervision, and that the same is true and  
correct to the best of my belief.

APRIL 26, 2002

Date Surveyed  
Signature & Seal of  
Professional Surveyor

*Ronald E. Eidson*  
Professional Surveyor  
4/29/02

Certificate No. RONALD E. EIDSON 3239  
GARY EIDSON 12641