

District I
1625 N. French Dr., Hobbs, NM 88240
District II
811 South First, Artesia, NM 88210
District III
1000 Rio Brazos Road, Aztec, NM 87410
District IV
2040 South Pacheco, Santa Fe, NM 87505

State of New Mexico
Energy Minerals and Natural Resources

Oil Conservation Division
2040 South Pacheco
Santa Fe, NM 87505

Form C-101
Revised March 17, 1999

Submit to appropriate District Office
State Lease - 6 Copies
Fee Lease - 5 Copies

☐ AMENDED REPORT

APPLICATION FOR PERMIT TO DRILL, RE-ENTER, DEEPEN, PLUGBACK, OR ADD A ZONE

¹ Operator Name and Address Saga Petroleum LLC 415 W. Wall, Suite 1900 Midland, TX 79701		² OGRID Number 148967
⁴ Property Code 20266	⁵ Property Name Allied	³ API Number 30-015-32497

⁷ Surface Location

UL or lot no	Section	Township	Range	Lot Idn	Feet from the	North/South line	Feet from the	East/West line	County
M	22	20S	27E		660	S	660	W	EDDY

⁸ Proposed Bottom Hole Location If Different From Surface

UL or lot no	Section	Township	Range	Lot Idn	Feet from the	North/South line	Feet from the	East/West line	County

⁹ Proposed Pool 1

Avalon Morrow

¹⁰ Proposed Pool 2

¹¹ Work Type Code DRILL	¹² Well Type Code G	¹³ Cable/Rotary R	¹⁴ Lease Type Code State K4990	¹⁵ Ground Level Elevation 3261'
¹⁶ Multiple	¹⁷ Proposed Depth 11,000'	¹⁸ Formation MORROW	¹⁹ Contractor	²⁰ Spud Date

²¹ Proposed Casing and Cement Program

Hole Size	Casing Size	Casing weight/foot	Setting Depth	Sacks of Cement	Estimated TOC
17-1/2"	13-3/8"	40#	400	350 sx	Circ surf
12-1/4"	8-5/8"	32# & 36#	3000'	1275 sx	circ surf
7-7/8"	5-1/2"	17# & 15.5# & 20#	11,000	1285 sx	2500'
Fresh water mud to 3000'					

²² Describe the proposed program. If this application is to DEEPEN or PLUG BACK, give the data on the present productive zone and proposed new productive zone.

Describe the blowout prevention program, if any. Use additional sheets if necessary.

Drl 17-1/2" hole to 400', run 13-3/8" 40# csg to 400', cmt w/350 sx 35:65 Poz Class C + additives, circ cmt to surf. WOC 12 hrs
Drl 12-1/4" hole to 3000', RU & run 8-5/8" 32# & 36# intermediate csg to 3000', cmt w/800 sx lead 35:65 Poz:Class C + additives
-tail in w/475 sx Class C - WOC 12 hrs. Drl 7-7/8" hole to 11,000', RU & run 5-1/2" 17, 15.5 & 20# csg, set @ 11,000'. Cmt
Stage 1 w/255 sx 35:65 Poz:Class + additives followed by 555 sx 50:50 Poz Class H + additives. Stage 2 lead w/360 sx 35:65 Poz
Class H + additives followed by 115 sx Class H Neat. WOC - NO DST's planned

Blowout Preventers 1 Shaffer LWS 10" x 3000# w/closing unit, choke manifold 3" x 3000# or
10" x 5000# w/closing unit. Choke manifold 3" x 5000#

²³ I hereby certify that the information given above is true and complete to the

best of my knowledge and belief.

Signature:

Bonnie Husband

Printed Name: Bonnie Husband

Title: Production Analyst

Date: 10/22/2002

Phone: (915)684-4293

OIL CONSERVATION DIVISION

Approved by:

ORIGINAL SIGNED BY TIM W. GUM
DISTRICT II SUPERVISOR

Title:

Approval Date: OCT 28 2002 Expiration Date: OCT 28 2003

Conditions of Approval: Operator to follow

Attached ☐ I submit data for woc

of 12 Hours on 8 5/8" casing.

R107, Option 2.

DISTRICT I
P.O. Box 1980, Hobbs, NM 88241-1980

DISTRICT II
P.O. Drawer DD, Artesia, NM 88211-0719

DISTRICT III
1000 Rio Brazos Rd., Aztec, NM 87410

DISTRICT IV
P.O. BOX 2088, SANTA FE, N.M. 87504-2088

State of New Mexico
Energy, Minerals and Natural Resources Department

OIL CONSERVATION DIVISION

P.O. Box 2088
Santa Fe, New Mexico 87504-2088

Form C-102
Revised February 10, 1994
Submit to Appropriate District Office
State Lease - 4 Copies
Fee Lease - 3 Copies

WELL LOCATION AND ACREAGE DEDICATION PLAT

☐ AMENDED REPORT

API Number 30-015-		Pool Code 70920	Pool Name AVALON MORROW	
Property Code 20266	Property Name ALLIED		Well Number 2	
OGRID No. 148967	Operator Name SAGA PETROLEUM LLC		Elevation 3261'	

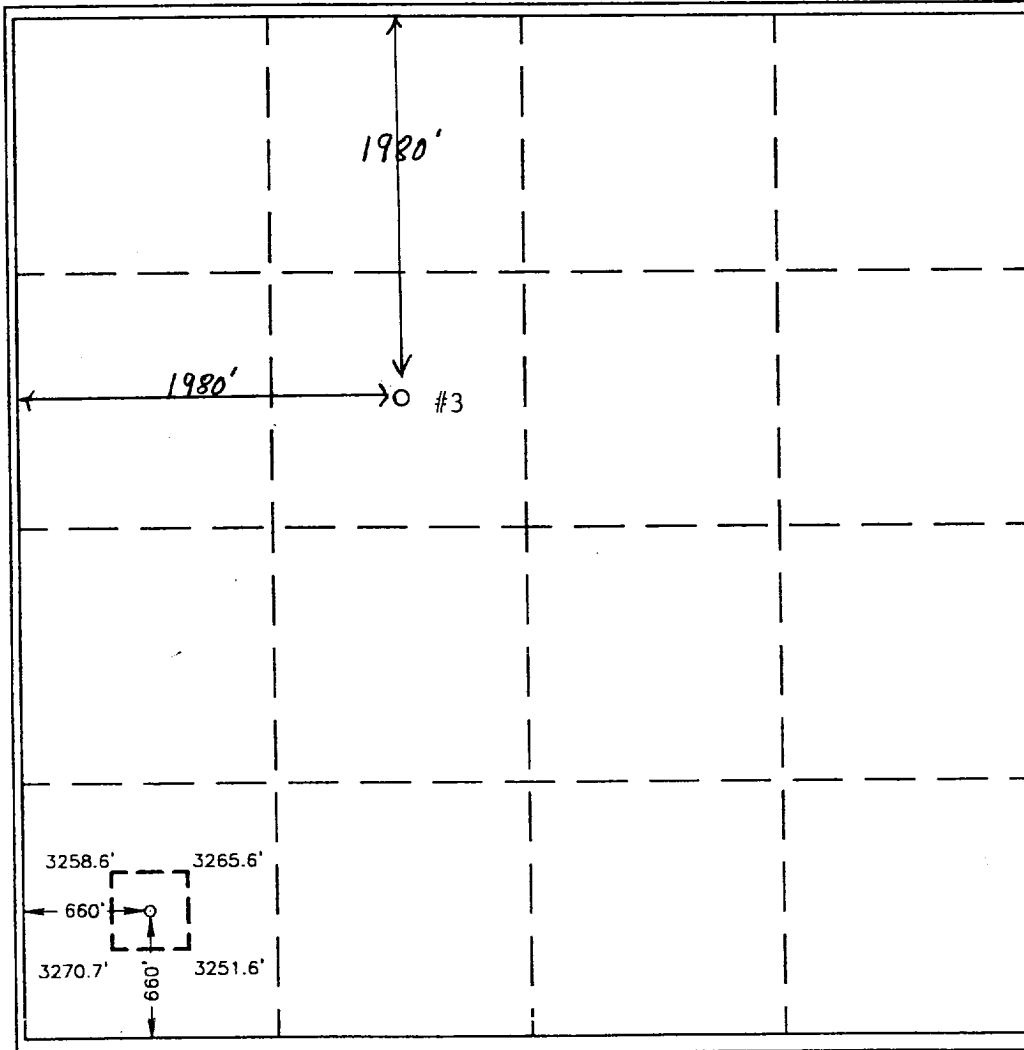
Surface Location

UL or lot No.	Section	Township	Range	Lot Idn	Feet from the	North/South line	Feet from the	East/West line	County
M	22	20-S	27-E		660'	SOUTH	660'	WEST	EDDY

Bottom Hole Location If Different From Surface

UL or lot No.	Section	Township	Range	Lot Idn	Feet from the	North/South line	Feet from the	East/West line	County
Dedicated Acres 320		Joint or Infill Jt	Consolidation Code		Order No.				

NO ALLOWABLE WILL BE ASSIGNED TO THIS COMPLETION UNTIL ALL INTERESTS HAVE BEEN CONSOLIDATED
OR A NON-STANDARD UNIT HAS BEEN APPROVED BY THE DIVISION



OPERATOR CERTIFICATION

I hereby certify the the information
contained herein is true and complete to the
best of my knowledge and belief.

Bonnie Husband
Signature

Bonnie Husband

Printed Name

Production Analyst

Title

October 23, 2002

Date

SURVEYOR CERTIFICATION

I hereby certify that the well location shown
on this plat was plotted from field notes of
actual surveys made by me or under my
supervision, and that the same is true and
correct to the best of my belief.

OCTOBER 07, 2002

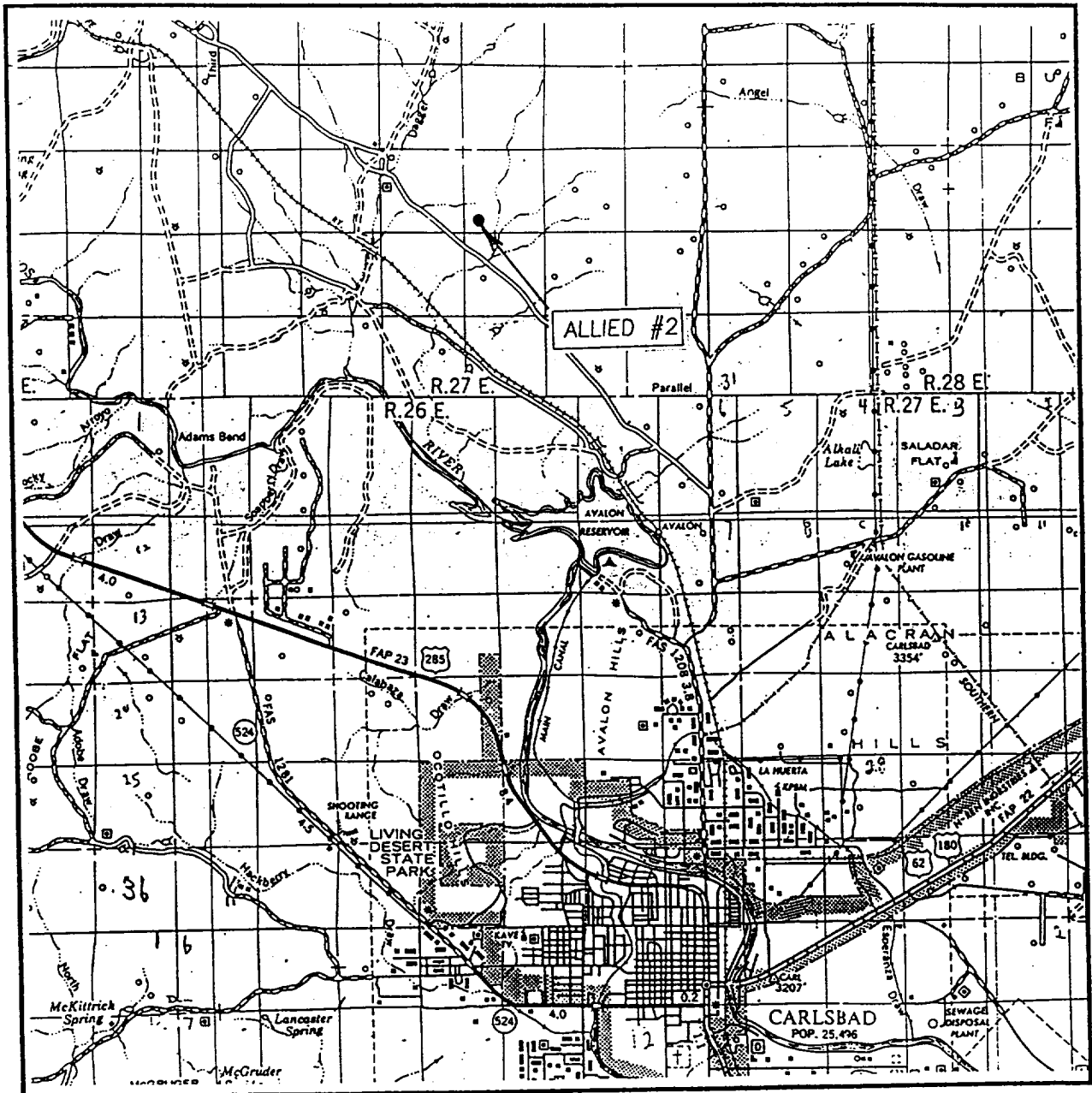
Date Surveyed AWB

Signature & Seal of
Professional Surveyor

Ronald A. Edson
RONALD A. EDSON 3239
12641
10/09/02

Certificate No. RONALD A. EDSON 3239
OARY EDSON 12641

VICINITY MAP



SCALE: 1" = 2 MILES

SEC. 22 TWP. 20-S RGE. 27-E
 SURVEY N.M.P.M.
 COUNTY EDDY
 DESCRIPTION 660' FSL & 660' FWL
 ELEVATION 3261'
 OPERATOR SAGA PETROLEUM LLC
 LEASE ALLIED

JOHN WEST SURVEYING
 HOBBS, NEW MEXICO
 (505) 393-3117