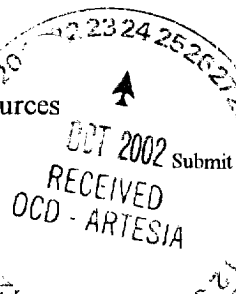


District I  
1625 N. French Dr., Hobbs, NM 88240  
District II  
811 South First, Artesia, NM 88210  
District III  
1000 Rio Brazos Road, Aztec, NM 87410  
District IV  
2040 South Pacheco, Santa Fe, NM 87505

State of New Mexico  
Energy Minerals and Natural Resources

Oil Conservation Division  
2040 South Pacheco  
Santa Fe, NM 87505



C-101  
Report March 17, 1999  
Submit to appropriate District Office  
State Lease - 6 Copies  
Fee Lease - 5 Copies

☐ AMENDED REPORT

**APPLICATION FOR PERMIT TO DRILL, RE-ENTER, DEEPEN, PLUG BACK, OR ADD A ZONE**

<sup>1</sup> Operator Name and Address Saga Petroleum LLC 415 W. Wall, Suite 1900 Midland, TX 79701		<sup>2</sup> OGRID Number 148967
<sup>3</sup> API Number 30-015-32498		
<sup>4</sup> Property Code 20266-30719	<sup>5</sup> Property Name Allied	<sup>6</sup> Well No. 3

**<sup>7</sup> Surface Location**

UL or lot no	Section	Township	Range	Lot Idn	Feet from the	North/South line	Feet from the	East/West line	County
F	22	20S	27E		1980	N	1980	W	

**<sup>8</sup> Proposed Bottom Hole Location If Different From Surface**

UL or lot no.	Section	Township	Range	Lot Idn	Feet from the	North/South line	Feet from the	East/West line	County

<sup>9</sup> Proposed Pool 1 Avalon Morrow	<sup>10</sup> Proposed Pool 2
---	-------------------------------

<sup>11</sup> Work Type Code DRILL	<sup>12</sup> Well Type Code G	<sup>13</sup> Cable/Rotary R	<sup>14</sup> Lease Type Code State K4990	<sup>15</sup> Ground Level Elevation 3267'
<sup>16</sup> Multiple	<sup>17</sup> Proposed Depth 11,000'	<sup>18</sup> Formation MORROW	<sup>19</sup> Contractor	<sup>20</sup> Spud Date

**<sup>21</sup> Proposed Casing and Cement Program**

Hole Size	Casing Size	Casing weight/foot	Setting Depth	Sacks of Cement	Estimated TOC
17-1/2"	13-3/8"	40#	400	350 sx	Circ surf
12-1/4"	8-5/8"	32# & 36#	3000'	1275 sx	circ surf
7-7/8"	5-1/2"	17# & 15.5# & 20#	11,000	1285 sx	2500'

<sup>22</sup> Describe the proposed program. If this application is to DEEPEN or PLUG BACK, give the data on the present productive zone and proposed new productive zone.

Describe the blowout prevention program, if any. Use additional sheets if necessary.

Drl 17-1/2" hole to 400', run 13-3/8" 40# csg to 400', cmt w/350 sx 35:65 Poz Class C + additives, circ cmt to surf. WOC 12 hrs  
Drl 12-1/4" hole to 3000', RU & run 8-5/8" 32# & 36# intermediate csg to 3000', cmt w/800 sx lead 35:65 Poz:Class C+ additives  
-tail in w/475 sx Class C - WOC 12 hrs. Drl 7-7/8" hole to 11,000', RU & run 5-1/2" 17# - 15.5# & 20# csg, set @ 11,000'. Cmt  
Stage 1 w/255 sx 35:65 Poz:Class + additives followed by 555 sx 50:50 Poz Class H + additives. Stage 2 lead w/360 sx 35:65 Poz  
Class H + additives followed by 115 sx Class H Neat. WOC - No DST's planned

Blowout Preventers 1 Shaffer LWS 10" x 3000# w/closing unit, choke manifold 3" x 3000# or  
10" x 5000# w/closing unit. Choke manifold 3" x 5000#

<sup>23</sup> I hereby certify that the information given above is true and complete to the best of my knowledge and belief. Signature: <i>Bonnie Husband</i> Printed Name: Bonnie Husband Title: Production Analyst Date: 10/22/2002 Phone: (915)684-4293		<b>OIL CONSERVATION DIVISION</b> Approved by: <i>Jim W. Brown</i> Title: <i>District Supervisor</i> Approval Date: <b>OCT 28 2002</b> Expiration Date: <b>OCT 28 2003</b> Conditions of Approval: Attached <input type="checkbox"/> Operator to follow & submit data for woc 12 Hours on 8 5/8" casing. B-107 continue	
---	--	--	--

P.O. Box 1980, Hobbs, NM 88241-1980

**Energy, Minerals and Natural Resources Department**

Form C-102

Revised February 10, 1994

Submit to Appropriate District Office

State Lease - 4 Copies

Free Lease - 3 Copies

DISTRICT II

P.O. Drawer DD, Artesia, NM 86211-0719

OIL CONSERVATION DIVISION

P.O. Box 2088

Santa Fe, New Mexico 87504-2088

DISTRICT III

1000 Rio Brazos Rd., Aztec, NM 87410

DISTRICT IV

P.O. BOX 2088, SANTA FE, N.M. 87504-2088

# WELL LOCATION AND ACREAGE DEDICATION PLAT

☐ AMENDED REPORT

API Number 30-015-		Pool Code 70920	Pool Name AVALON MORROW		<input type="checkbox"/> AMENDED REPORT
Property Code 20266	Property Name ALLIED			Well Number 3	
OGRID No. 148967	Operator Name SAGA PETROLEUM LLC			Elevation 3267'	

### Surface Location

UL or lot No.	Section	Township	Range	Lot Idn	Feet from the	North/South line	Feet from the	East/West line	County
F	22	20-S	27-E		1980'	NORTH	1980'	WEST	EDDY

## Bottom Hole Location If Different From Surface

UL or lot No.	Section	Township	Range	Lot Idn	Feet from the	North/South line	Feet from the	East/West line	County
Dedicated Acres 320	Joint or Infill Jt	Consolidation Code			Order No.				

NO ALLOWABLE WILL BE ASSIGNED TO THIS COMPLETION UNTIL ALL INTERESTS HAVE BEEN CONSOLIDATED  
OR A NON-STANDARD UNIT HAS BEEN APPROVED BY THE DIVISION

1980'

3267.1'

3265.7'

1980'

3266.9'

3263.5'

660'

660'

#2

## OPERATOR CERTIFICATION

I hereby certify the the information  
contained herein is true and complete to the  
best of my knowledge and belief.

Bonnie Husband  
Signature

Bonnie Husband

Printed Name \_\_\_\_\_

## Production Analyst

**Title**

October 23, 2002

Date \_\_\_\_\_

### SURVEYOR CERTIFICATION

I hereby certify that the well location shown on this plat was plotted from field notes of actual surveys made by me or under my supervision and that the same is true and correct to the best of my belief.

COTOBEP 07, 2002

Date Surveyed \_\_\_\_\_

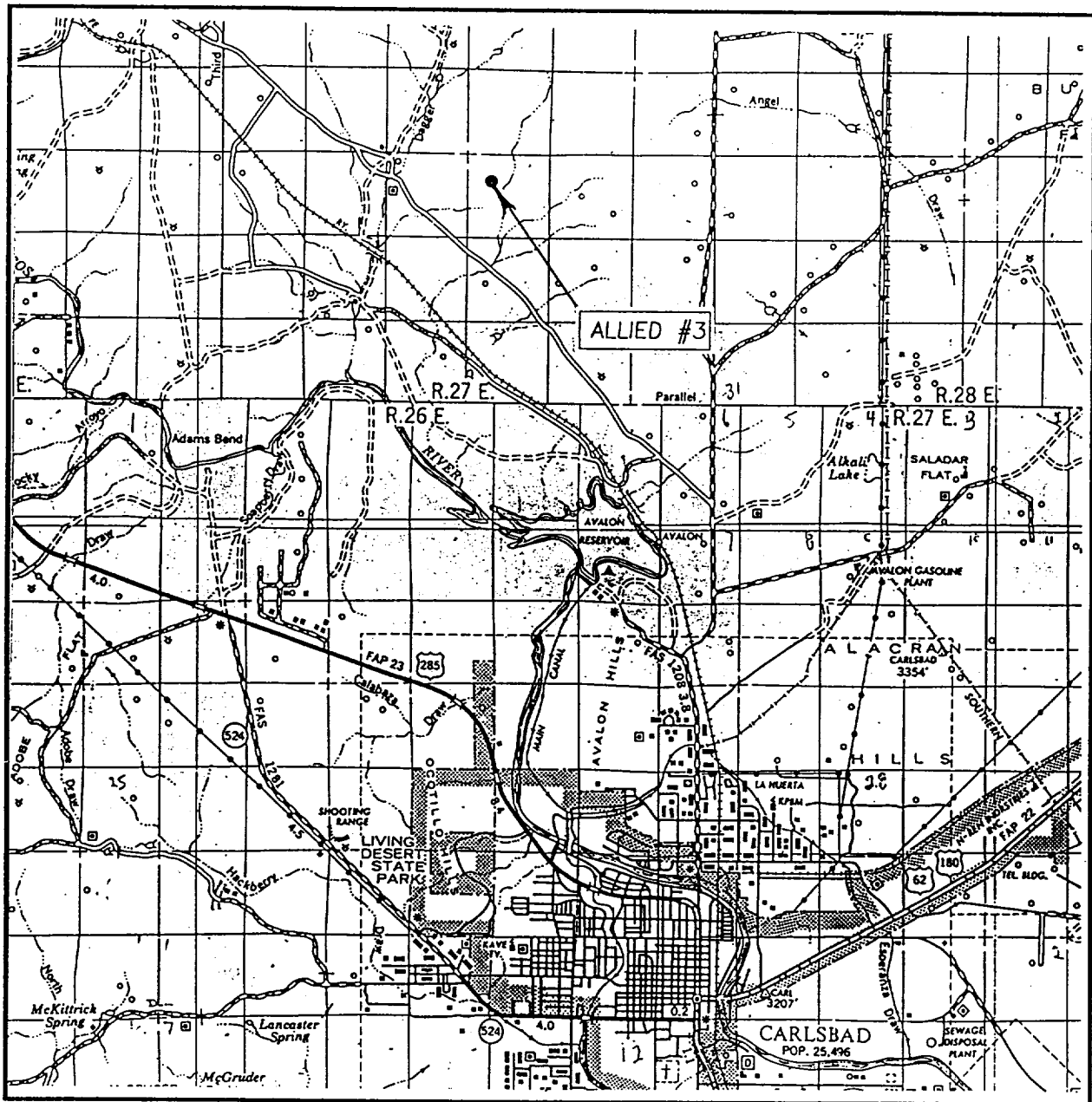
AWB

Signature & Seal of  
Professional Surveyor

Ronald E. Egan 10/09/02  
02-11-0712

Certificate No. RONALD J. EIDSON 3238  
GARY EIDSON 12641

# VICINITY MAP



SCALE: 1" = 2 MILES

SEC. 22 TWP. 20-S RGE. 27-E

SURVEY N.M.P.M.

COUNTY EDDY

DESCRIPTION 1980' FNL & 1980' FWL

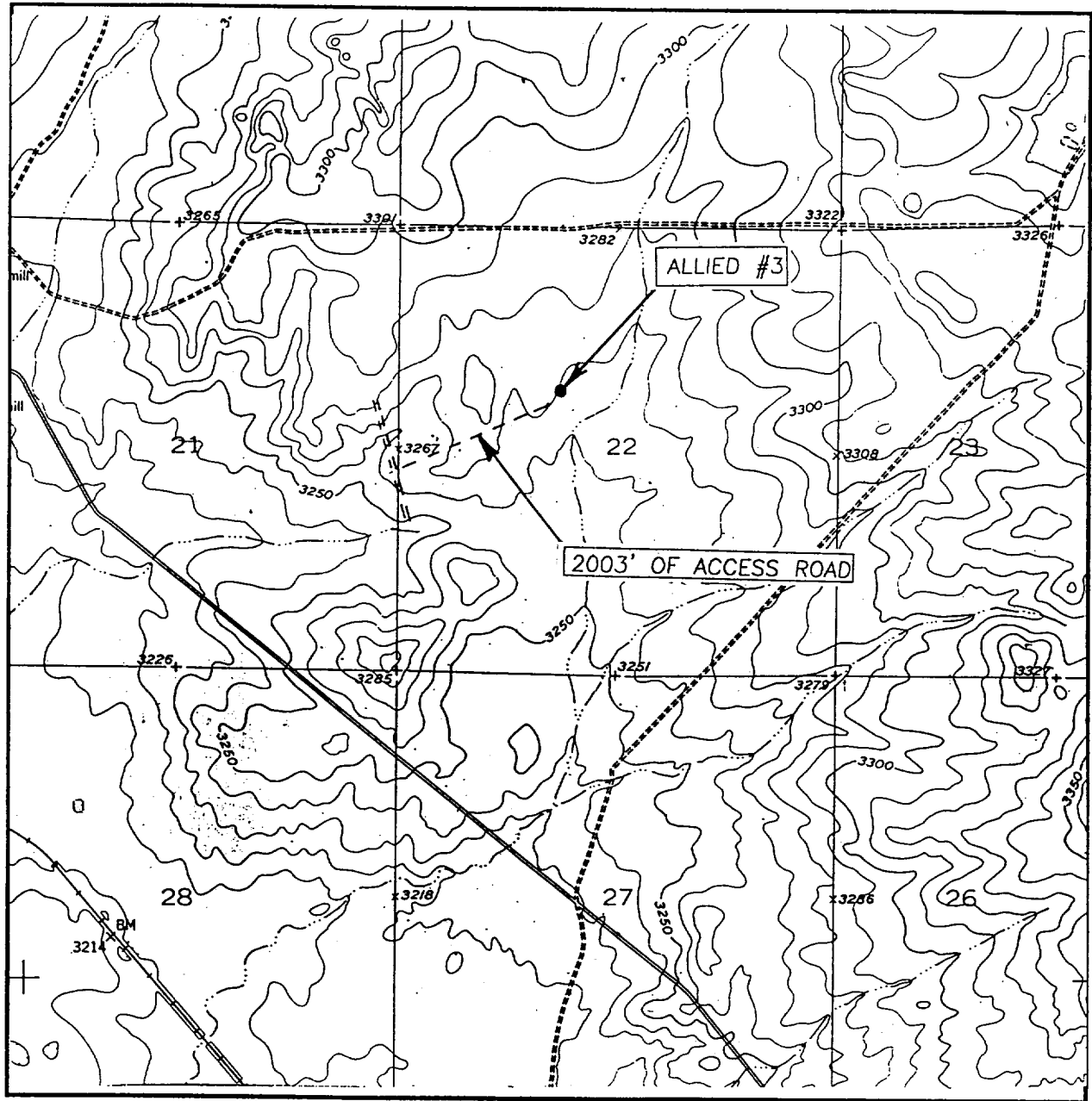
ELEVATION 3267'

OPERATOR SAGA PETROLEUM LLC

LEASE ALLIED

JOHN WEST SURVEYING  
HOBBS, NEW MEXICO  
(505) 393-3117

# LOCATION VERIFICATION MAP



SCALE: 1" = 2000'

CONTOUR INTERVAL: 5'  
LAKE McMILLIAN, SOUTH, N.M.

SEC. 22 TWP. 20-S RGE. 27-E

SURVEY \_\_\_\_\_ N.M.P.M.

COUNTY \_\_\_\_\_ EDDY

DESCRIPTION 1980' FNL & 1980' FWL

ELEVATION 3267'

OPERATOR SAGA PETROLEUM LLC

LEASE \_\_\_\_\_ ALLIED

U.S.G.S. TOPOGRAPHIC MAP  
LAKE McMILLIAN SOUTH, N.M.

JOHN WEST SURVEYING  
HOBBS, NEW MEXICO  
(505) 393-3117