

DISTRICT I
P.O. Box 1980, Hobbs, NM 88241-1980

State of New Mexico
Energy, Minerals and Natural Resources Department

Form C-102
Revised February 10, 1994
Submit to Appropriate District Office
State Lease - 4 Copies
Fee Lease - 3 Copies

DISTRICT II
P.O. Drawer DD, Artesia, NM 88211-0719

OIL CONSERVATION DIVISION

P.O. Box 2088
Santa Fe, New Mexico 87504-2088

DISTRICT III
1000 Rio Brazos Rd., Aztec, NM 87410

*change unit configuration

DISTRICT IV
P.O. Box 2088, Santa Fe, N.M. 87504-2088

WELL LOCATION AND ACREAGE DEDICATION PLAT

☒ AMENDED REPORT

API Number 30-015-32576		Pool Code 33685	Pool Name INDIAN BASIN (UPPER PENN) ASSOC.
Property Code 20201	Property Name WINSTON GAS COM.		Well Number 10
OGRID No. 6137	Operator Name DEVON ENERGY PRODUCTION COMPANY, L.P.		Elevation 3836'

Surface Location

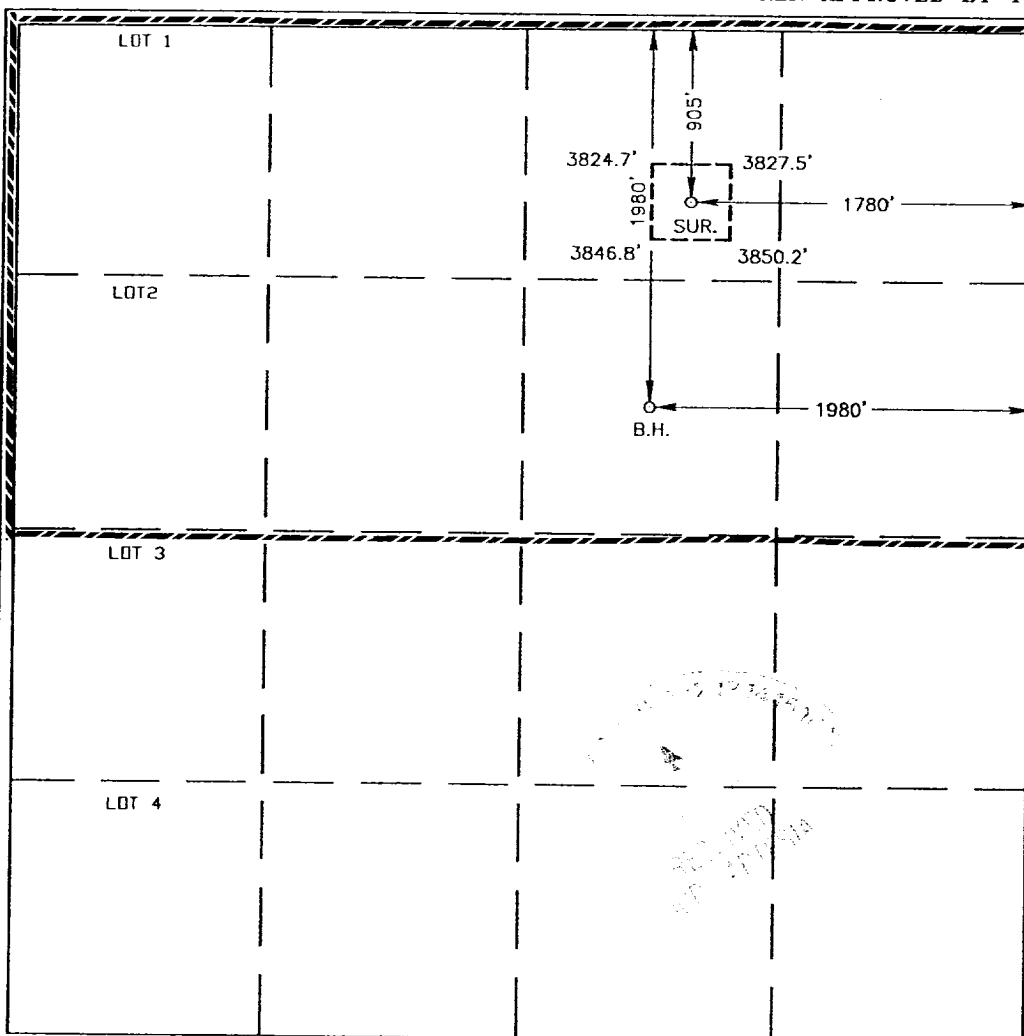
UL or lot No.	Section	Township	Range	Lot Idn	Feet from the	North/South line	Feet from the	East/West line	County
B	31	21-S	24-E		905'	NORTH	1780'	EAST	EDDY

Bottom Hole Location If Different From Surface

UL or lot No.	Section	Township	Range	Lot Idn	Feet from the	North/South line	Feet from the	East/West line	County
G	31	21-S	24-E		1980'	NORTH	1980'	EAST	EDDY

Dedicated Acres	Joint or Infill	Consolidation Code	Order No.
320			

NO ALLOWABLE WILL BE ASSIGNED TO THIS COMPLETION UNTIL ALL INTERESTS HAVE BEEN CONSOLIDATED
OR A NON-STANDARD UNIT HAS BEEN APPROVED BY THE DIVISION



OPERATOR CERTIFICATION

I hereby certify that the information contained herein is true and complete to the best of my knowledge and belief.

Candace R. Graham
Signature

Candace R. Graham
Printed Name

Engineering Tech.
Title

*February 6, 2003
Date

SURVEYOR CERTIFICATION

I hereby certify that the well location shown on this plat was plotted from field notes of actual surveys made by me or under my supervision, and that the same is true and correct to the best of my belief.

OCTOBER 24, 2002

Date Surveyed AWB

Signature & Seal of
Professional Surveyor

Ronald J. Edson
02.11.0780

Certificate No. RONALD J. EDSON 3239
GARY EDSON 12641