

District I
PO Box 1980, Hobbs, NM 88241-1980

District II
811 South First, Artesia, NM 88210

District III
1000 Rio Brazos Rd., Aztec, NM 87410

District IV
2040 South Pacheco, Santa Fe, NM 87505

State of New Mexico
Energy, Minerals & Natural Resources Department

OIL CONSERVATION DIVISION

2040 South Pacheco
Santa Fe, NM 87505
JAN 23 2003
OCD - ARTESIA

Form C-101

Revised October 18, 1994

Instructions on back

Submit to Appropriate District Office

State Lease - 6 Copies

Fee Lease - 5 Copies

☐ AMENDED REPORT

APPLICATION FOR PERMIT TO DRILL, RE-ENTER, DEEPEN, PLUGBACK, OR ADD A ZONE

Operator Name and Address Mewbourne Oil Company PO Box 5950 Hobbs, New Mexico 88241		OGRID Number 14744
Property Code 21082		API Number 30 - 0 15 - 32589
Property Name Otis 35 Fee Com		Well No. 1

Surface Location

UL or lot no.	Section	Township	Range	Lot Idn	Feet from the	North/South line	Feet from the	East/West Line	County
P	35	21S	27E		660	South	660	East	Eddy

Proposed Bottom Hole Location If Different From Surface

UL or lot no.	Section	Township	Range	Lot Idn	Feet from the	North/South line	Feet from the	East/West Line	County
Proposed Pool 1 Carlsbad East Morrow						Proposed Pool 2 Carlsbad East Morrow			

Work Type Code N	Well Type Code G	Cable/Rotary R	Lease Type Code P	Ground Level Elevation 3098
Multiple No	Proposed Depth 12100	Formation Morrow	Contractor TBA	Spud Date 02-01-03

Proposed Casing and Cement Program

Hole Size	Casing Size	Casing weight/foot	Setting Depth	Sacks of Cement	Estimated TOC
17 1/2"	13 3/8"	48#	500	400 Sks	Surface
12 1/4"	8 5/8"	32#	2600	1000 Sks	Surface
7 7/8"	5 1/2"	17#	12100	700 Sks	500 ft above WC

Describe the proposed program. If this application is to DEEPEN or PLUG BACK give the data on the present productive zone and proposed new productive zone. Describe the blowout prevention program, if any. Use additional sheets if necessary.

Mud Program: 0-30... Spud Mud & Fresh Water

300-2600... Brine Water & Sweeps

2600-8500... Fresh Water & Sweeps

8500-TD..... Add Brine for 9.5#/g w/ Mud. Lower WL in Strawn.

BOP Program: 2K Hydril (Exhibit #2) from surface casing to intermediate TD.

Schaffer LWS or equivalent (Double-Ram Hydraulic) 900 series w/ Hydril 900 series (Exhibit 2-A) from intermediate casing to TD. Rotating Head, PVT, Flow Monitors & Mud-Gas separator will be installed before the Wolfcamp.

I hereby certify that the information given above is true and complete to the best of my knowledge and belief.

Signature:

Printed name: N.M. Young

Title: District Manager

OIL CONSERVATION DIVISION

Approved By:

ORIGINAL SIGNED BY TIM W. GUM
DISTRICT II SUPERVISOR

Title:

Approval Date: JAN 23 2003

Expiration Date: JAN 23 2004

Cement to cover all oil, gas and water bearing zones.

DISTRICT II

811 South First, Artesia, NM 88210

DISTRICT III

1000 Rio Brazos Rd., Aztec, NM 87410

DISTRICT IV

2040 South Pacheco, Santa Fe, NM 87505

OIL CONSERVATION DIVISION

P.O. Box 2088

Santa Fe, New Mexico 87504-2088

☐ AMENDED REPORT

WELL LOCATION AND ACREAGE DEDICATION PLAT

API Number	Pool Code	Pool Name
		Carlsbad East Morrow
Property Code	Property Name	Well Number
	OTIS "35" E&A Com	1
OGRIID No.	Operator Name	Elevation
14744	MEWBOURNE OIL COMPANY	3098

Surface Location

UL or lot No.	Section	Township	Range	Lot Idn	Feet from the	North/South line	Feet from the	East/West line	County
P	35	21S	27E		660	SOUTH	660	EAST	EDDY

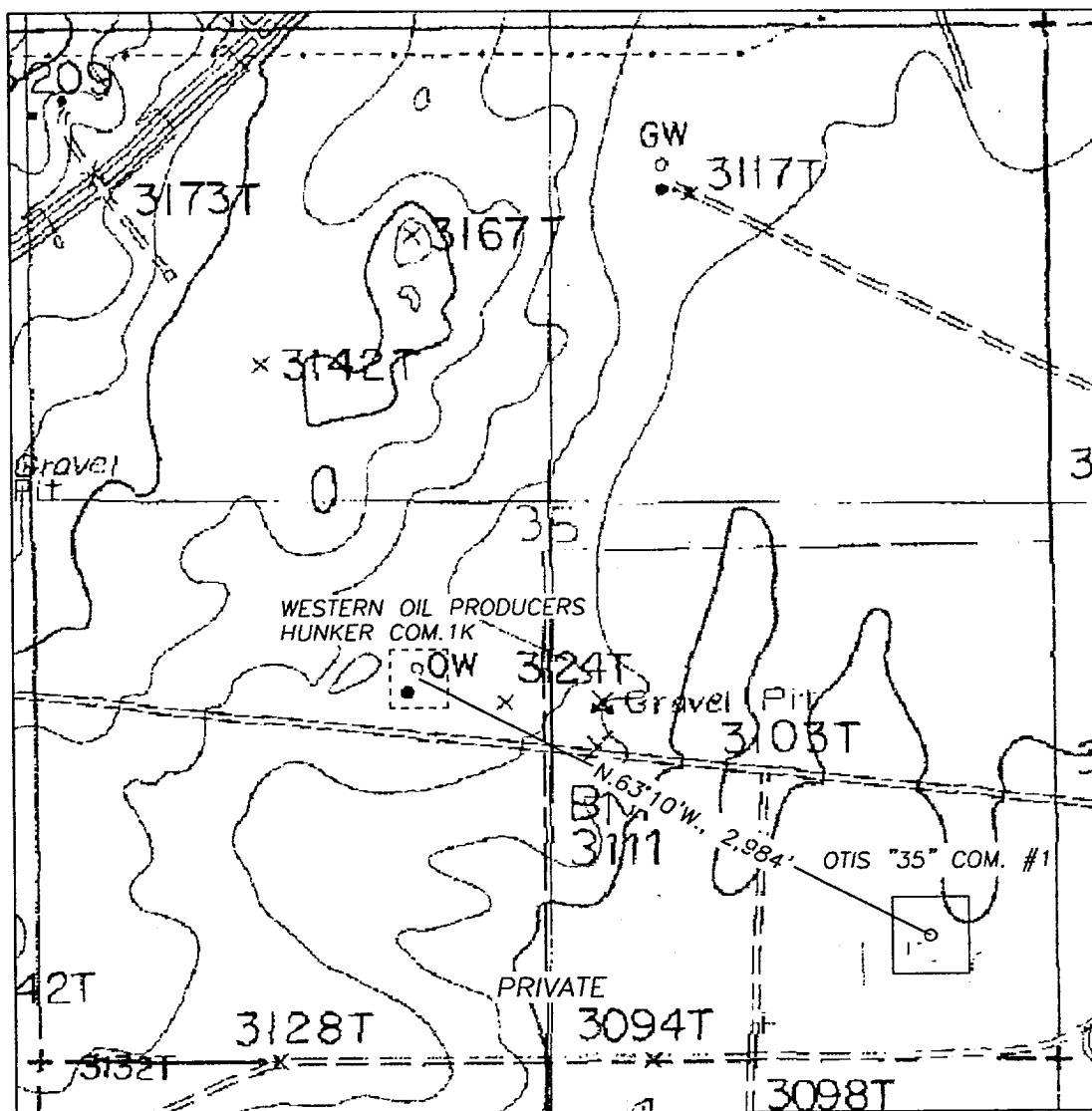
Bottom Hole Location If Different From Surface

UL or lot No.	Section	Township	Range	Lot Idn	Feet from the	North/South line	Feet from the	East/West line	County
Dedicated Acres	Joint or Infill	Consolidation Code	Order No.						
320									

NO ALLOWABLE WILL BE ASSIGNED TO THIS COMPLETION UNTIL ALL INTERESTS HAVE BEEN CONSOLIDATED
OR A NON-STANDARD UNIT HAS BEEN APPROVED BY THE DIVISION

	OPERATOR CERTIFICATION I hereby certify the the information contained herein is true and complete to the best of my knowledge and belief. Signature <u>N.M. Young</u> Printed Name <u>District Manager</u> Title <u>01/15/03</u> Date		
	SURVEYOR CERTIFICATION I hereby certify that the well location shown on this plat was plotted from field notes of actual surveys made by me or under my supervision, and that the same is true and correct to the best of my belief. Date Surveyed <u>12/06/2002</u> Signature of Seal of Professional Surveyor <u>[Signature]</u> Certificate No. <u>3640</u> Jones RLS 3640 GENERAL SURVEYING COMPANY		

SECTION 35, TOWNSHIP 21 S, RANGE 27 EAST, NMPM, EDDY COUNTY, NEW MEXICO.



1000' 0 1000' 2000'
Scale 1" = 1000'

THE PREPARATION OF THIS PLAT AND THE PERFORMANCE OF THE SURVEY UPON WHICH IT IS BASED WERE DONE UNDER MY DIRECTION AND THE PLAT ACCURATELY DEPICTS THE RESULTS OF SAID SURVEY AND MEET THE REQUIREMENTS OF THE STANDARDS FOR LAND SURVEYS IN NEW MEXICO AS ADOPTED BY THE NEW MEXICO STATE BOARD OF REGISTRATION FOR PROFESSIONAL ENGINEERS AND LAND SURVEYORS.

HERSCHEL L. JONES R.L.S. No. 3640

GENERAL SURVEYING COMPANY P.O. BOX 1928
LOVINGTON, NEW MEXICO 88260

MEWBOURNE OIL COMPANY

LEASE ROAD TO ACCESS THE MEWBOURNE OTIS "35" COM. #1 WELL, LOCATED IN SECTION 35, TOWNSHIP 21 SOUTH, RANGE 27 EAST, NMPM, EDDY COUNTY, NEW MEXICO.

Survey Date: 12/06/2002	Sheet 1 of 1 Sheets
Drawn By: Ed Blevins	W.O. Number
Date: 12/06/02	Scale 1" = 1000' OTIS35COM1

Mewbourne Oil Company
BOP Scematic for
12 1/4" Hole

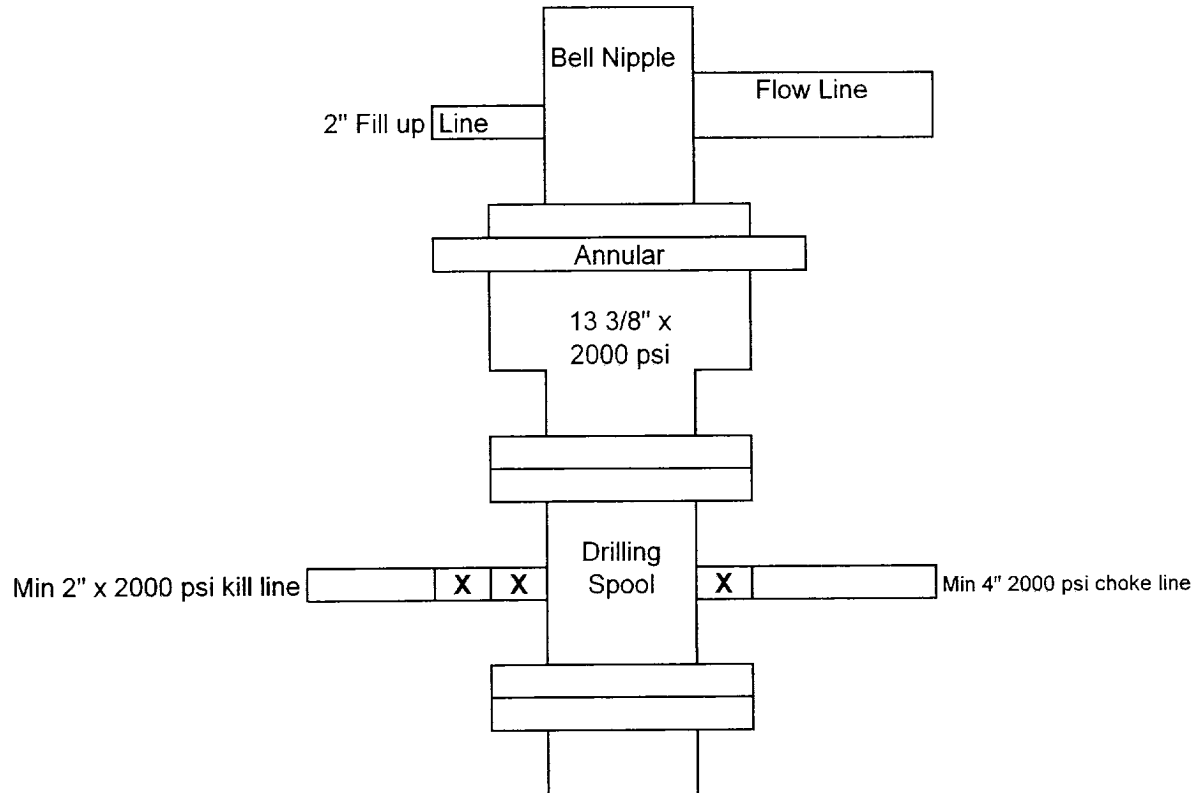


Exhibit #2

Otis 35 Fee Com #1
660' FSL & 660' FEL
Sec.35 T-21S R-27E
Eddy, Co. N.M.

Mewbourne Oil Company
 BOP Scematic for
 8 3/4" or 7 7/8" Hole

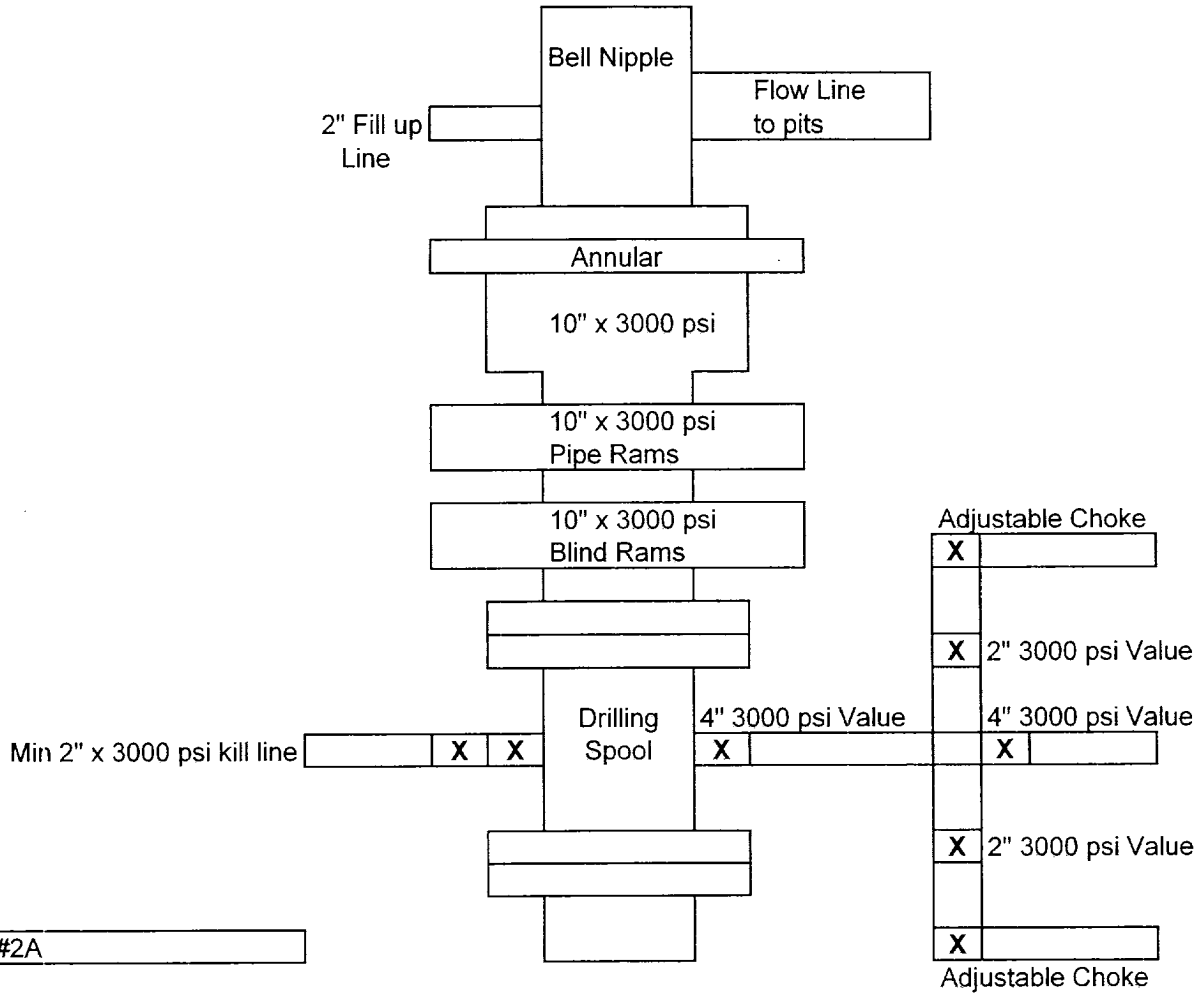


Exhibit #2A

Otis 35 Fee Com #1
 660' FSL & 660' FEL
 Sec. 35 T-21S R-27E
 Eddy, County New Mexico