

District I
1625 N. French Dr., Hobbs, NM 88240
District II
811 South First, Artesia, NM 88210
District III
1000 Rio Brazos Road, Aztec, NM 87410
District IV
2040 South Pacheco, Santa Fe, NM 87505

State of New Mexico
Energy Minerals and Natural Resources

Form C-101
Revised March 17, 1999

Oil Conservation Division
2040 South Pacheco
Santa Fe, NM 87505

Submit to appropriate District Office
State Lease - 6 Copies
Fee Lease - 5 Copies

☐ AMENDED REPORT

APPLICATION FOR PERMIT TO DRILL, RE-ENTER, DEEPEN, PLUGBACK, OR ADD A ZONE

¹ Operator Name and Address POGO PRODUCING COMPANY P.O. BOX 10340 MIDLAND, TEXAS 79702-7440		² OGRID Number 17891
		³ API Number 30-015-32612
⁴ Property Code 31922	⁵ Property Name STATE 19 COM.-	⁶ Well No. 2

⁷ Surface Location

UL or lot no.	Section	Township	Range	Lot Idn	Feet from the	North/South line	Feet from the	East/West line	County
Lot # 3	19	20S	27E		1980'	SOUTH	660'	WEST	EDDY

⁸ Proposed Bottom Hole Location If Different From Surface

UL or lot no.	Section	Township	Range	Lot Idn	Feet from the	North/South line	Feet from the	East/West line	County

⁹ Proposed Pool 1

McMILLAN-MORROW (81240)

¹⁰ Proposed Pool 2

¹¹ Work Type Code N	¹² Well Type Code G	¹³ Cable/Rotary ROTARY	¹⁴ Lease Type Code S	¹⁵ Ground Level Elevation 3289' GR.
¹⁶ Multiple NO	¹⁷ Proposed Depth 11,000'	¹⁸ Formation MORROW	¹⁹ Contractor UNKNOWN	²⁰ Spud Date WHEN APPROVED

²¹ Proposed Casing and Cement Program

Hole Size	Casing Size	Casing weight/foot	Setting Depth	Sacks of Cement	Estimated TOC
25"	20"	NA	40'	Redi-mix	SURFACE
17 1/2"	13 3/8"	48	500'	500 Sx	SURFACE
12 1/4"	9 5/8"	40.5	3000'	1200 Sx.	SURFACE
* 8 1/2"	7"	26	9000' ±	850 Sx.	2800' FROM S.
* 7 7/8"	5 1/2"	17	11,000'	1000 Sx.	2000' FROM S.

²² Describe the proposed program. If this application is to DEEPEN or PLUG BACK, give the data on the present productive zone and proposed new productive zone.
Describe the blowout prevention program, if any. Use additional sheets if necessary.

* SEE ATTACHMENT



²³ I hereby certify that the information given above is true and complete to the best of my knowledge and belief.

Signature:

Printed name: Joe T. Janica

Title: Agent

Date:

01/29/03

Phone:

505-391-8503

OIL CONSERVATION DIVISION

Approved by:

ORIGINAL SIGNED BY TIM W. GUM
DISTRICT II SUPERVISOR

Title:

Approval Date:

FEB - 3 2004

Expiration Date:

FEB - 3 2004

Conditions of Approval:

POGO PRODUCING COMPANY
STATE "19 COM. # 2
1980' FSL & 660' FWL
SECTION 19 T20S-R27E
EDDY CO. NM

1. Drill 25" hole to 40'. set 40' of 20" conductor pipe and cement to surface with Redi-mix.
2. Drill 17½" hole to 500'. Run and set 500' of 13 3/8" 48# H-40 ST&C casing. Cement with 500 Sx. of Class "C" cement + additives, circulate cement to surface.
3. Drill 12¼" hole to 3000'. Run and set 3000' of 9 5/8" 40.5# J-55 ST&C casing. Cement with 1200 Sx. of Class "C" cement + additives, Circulate cement to surface.
4. Drill 8½" hole to 9000' if no lost circulation problems occur in the Cisco reduce hole size to 7 7/8" and drill to 11,000'. If lost circulation is a problem drill through the problem zone and set 9000'± of 7" 26# N-80 LT&C casing and cement in place, then drill to a total depth of 11,000' with a 6 1/8" bit and run a 5" 18# N-80 liner from 8800'± to TD. If no lost circulation problems occur drill to TD with the 7 7/8" bit and run 3000' of 5½" 17# N-80 LT&C, 6000' of 5½" J-55 LT&C, 2000' of 5½" 17# N-80 LT&C casing. Cement in two stages with DV Tools at 8000'± & 5000'± then cement with 1000 Sx. of Class "H" cement + additives, estimate top of cement 2000' from surface.

DISTRICT I
P.O. Box 1980, Hobbs, NM 88241-1980

State of New Mexico

Energy, Minerals and Natural Resources Department

Form C-102

Revised February 10, 1994

DISTRICT II
P.O. Drawer DD, Artesia, NM 88211-0719

OIL CONSERVATION DIVISION

P.O. Box 2088

Santa Fe, New Mexico 87504-2088

Submit to Appropriate District Office

State Lease - 4 Copies

Fee Lease - 3 Copies

DISTRICT III
1000 Rio Brazos Rd., Aztec, NM 87410

DISTRICT IV
P.O. BOX 2088, SANTA FE, N.M. 87504-2088

WELL LOCATION AND ACREAGE DEDICATION PLAT

☐ AMENDED REPORT

API Number	Pool Code	Pool Name
	81240	McMILLIAN-MORROW
Property Code	Property Name	Well Number
	STATE 19 COM	2
OGRID No.	Operator Name	Elevation
17891	POGO PRODUCING COMPANY	3289'

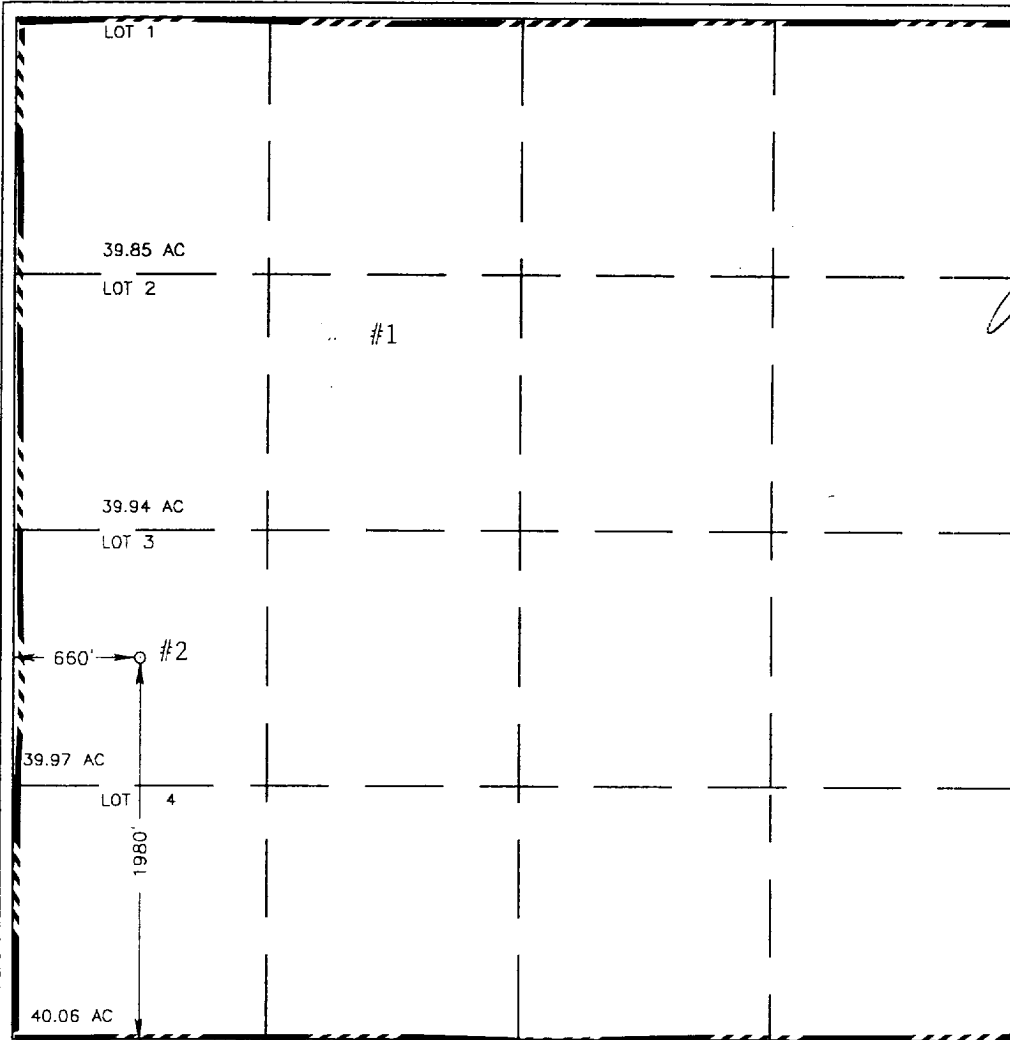
Surface Location

UL or lot No.	Section	Township	Range	Lot Idn	Feet from the	North/South line	Feet from the	East/West line	County
3	19	20-S	27-E		1980'	SOUTH	660'	WEST	EDDY

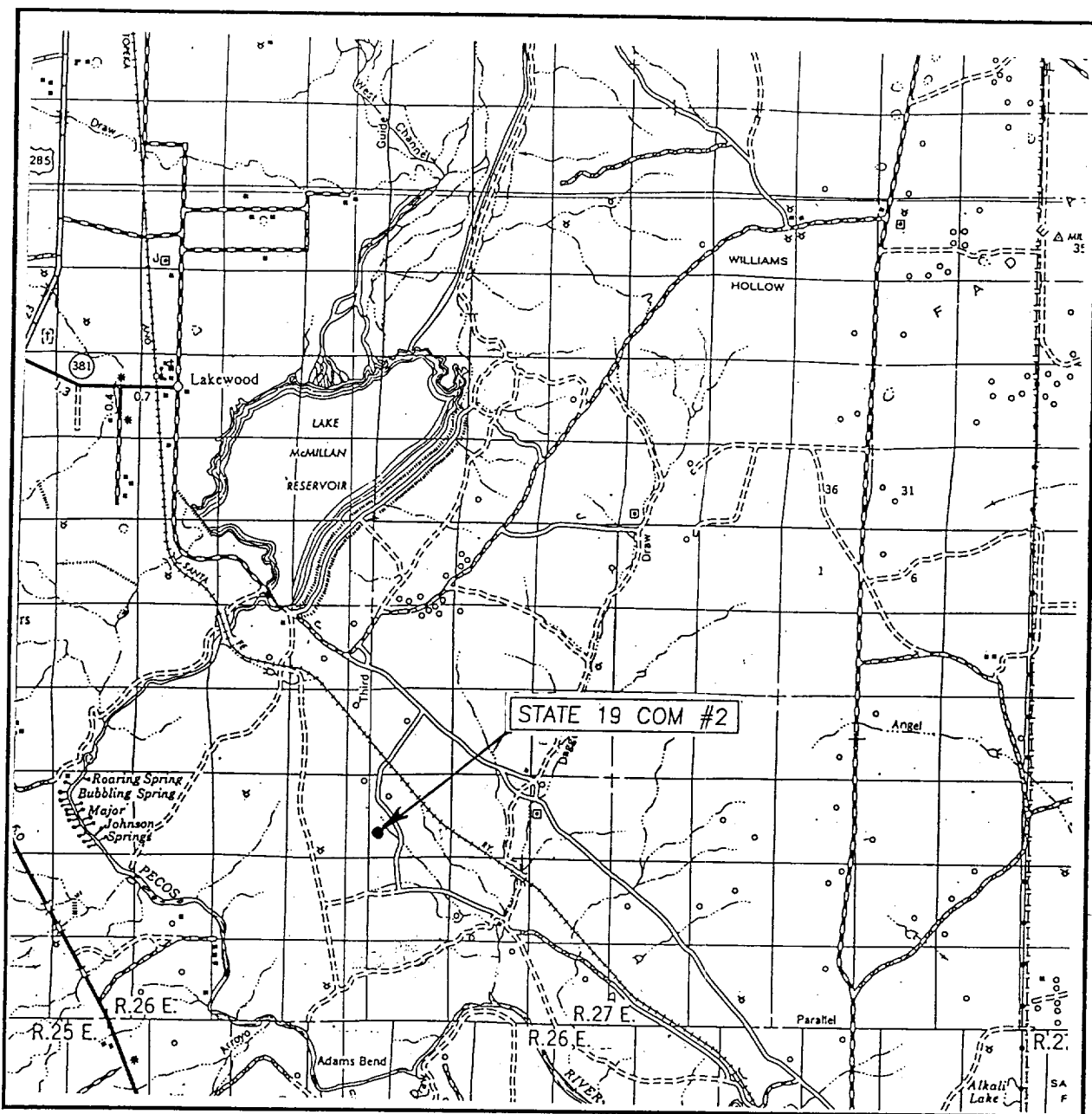
Bottom Hole Location If Different From Surface

UL or lot No.	Section	Township	Range	Lot Idn	Feet from the	North/South line	Feet from the	East/West line	County
Dedicated Acres	Joint or Infill	Consolidation Code	Order No.						
640									

NO ALLOWABLE WILL BE ASSIGNED TO THIS COMPLETION UNTIL ALL INTERESTS HAVE BEEN CONSOLIDATED
OR A NON-STANDARD UNIT HAS BEEN APPROVED BY THE DIVISION

	<p>OPERATOR CERTIFICATION</p> <p>I hereby certify the the information contained herein is true and complete to the best of my knowledge and belief.</p> <p><i>Joe T. Janica</i> Signature Joe T. Janica Printed Name Agent Title 01/29/03 Date</p> <p>SURVEYOR CERTIFICATION</p> <p>I hereby certify that the well location shown on this plat was plotted from field notes of actual surveys made by me or under my supervision, and that the same is true and correct to the best of my belief.</p> <p>DECEMBER 18, 2002 Date Surveyed A.W.B. Signature & Seal of Professional Surveyor <i>Ronald J. Eidson</i> 12/19/02 02.11.0995 Certificate No. RONALD J. EIDSON 3239 GARY EIDSON 12641</p>
--	---

VICINITY MAP



SCALE: 1" = 2 MILES

SEC. 19 TWP. 20-S RGE. 27-E

SURVEY N.M.P.M.

COUNTY EDDY

DESCRIPTION 1980' FSL & 660' FWL

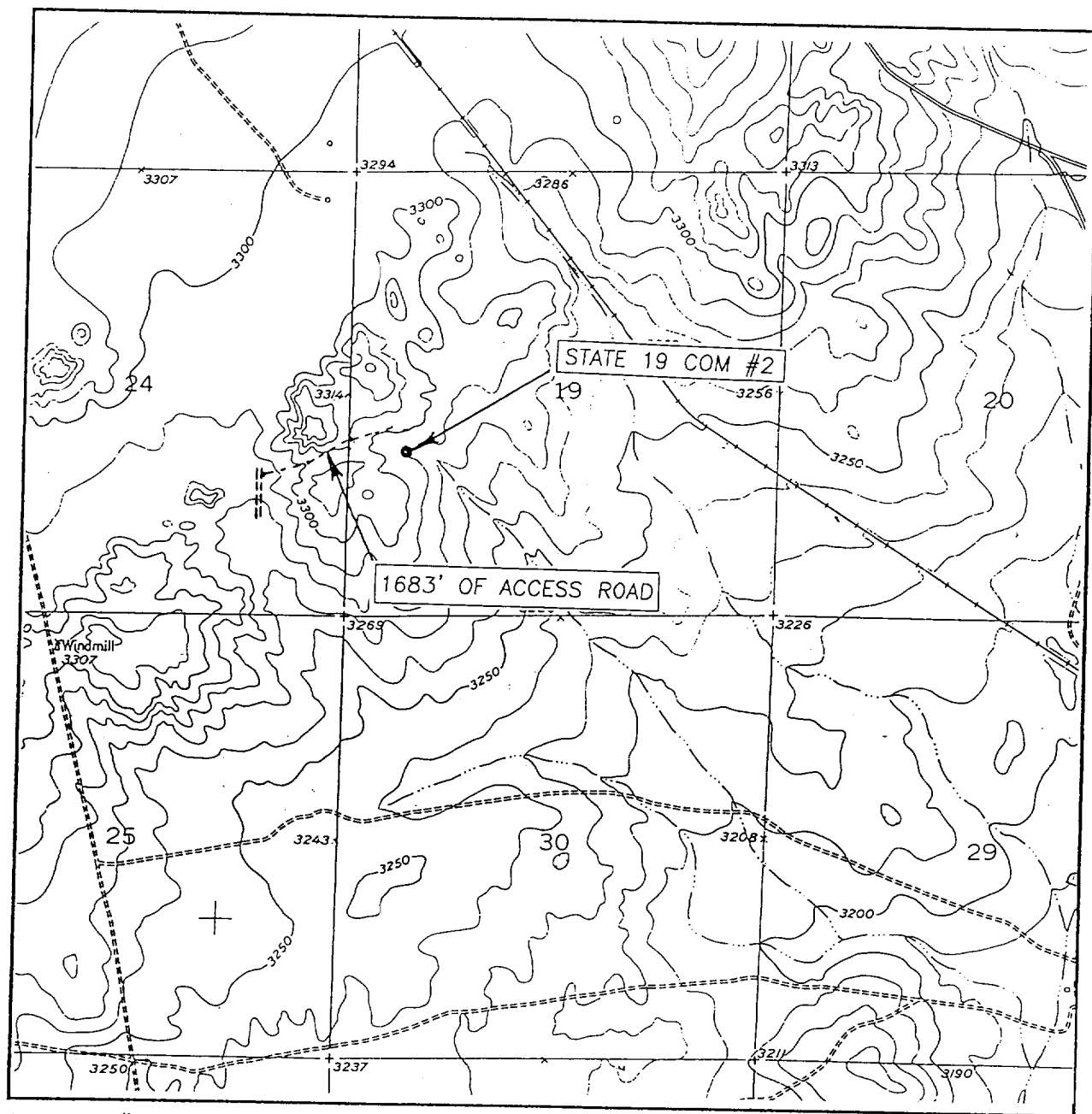
ELEVATION 3289'

OPERATOR POGO PRODUCING COMPANY

LEASE STATE 19 COM

JOHN WEST SURVEYING
HOBBS, NEW MEXICO
(505) 393-3117

LOCATION VERIFICATION MAP



SCALE: 1" = 2000'

CONTOUR INTERVAL: 10'
LAKE McMILLAN SOUTH, N.M.

SEC. 19 TWP. 20-S RGE. 27-E

SURVEY N.M.P.M.

COUNTY EDDY

DESCRIPTION 1980' FSL & 660' FWL

ELEVATION 3289'

OPERATOR POGO PRODUCING COMPANY

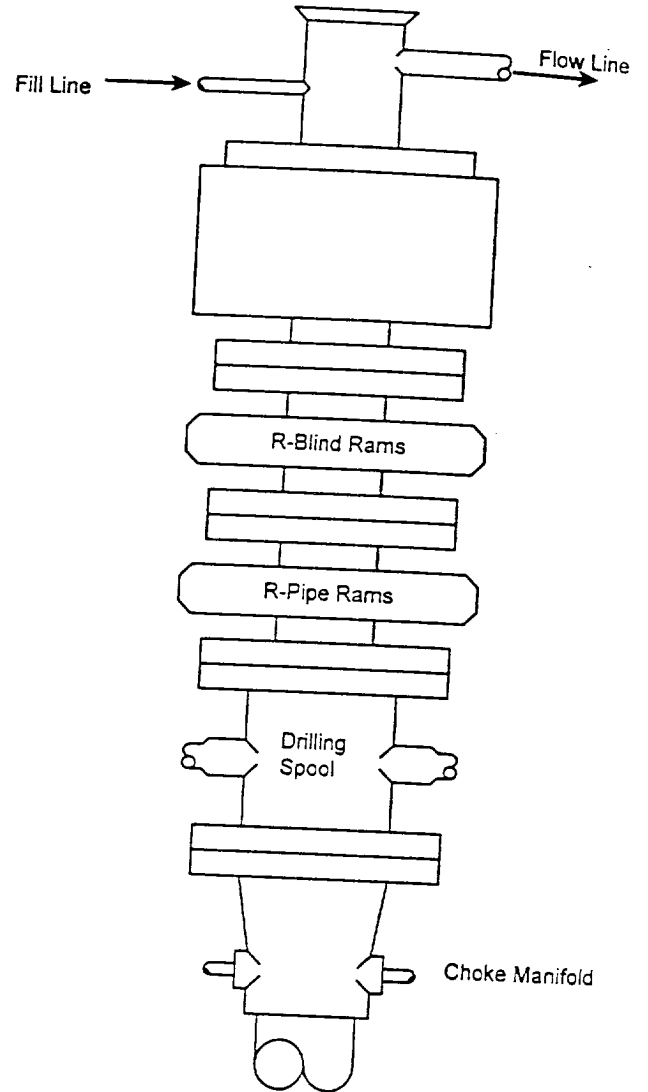
LEASE STATE 19 COM

U.S.G.S. TOPOGRAPHIC MAP
LAKE McMILLAN SOUTH, N.M.

JOHN WEST SURVEYING
HOBBS, NEW MEXICO
(505) 393-3117

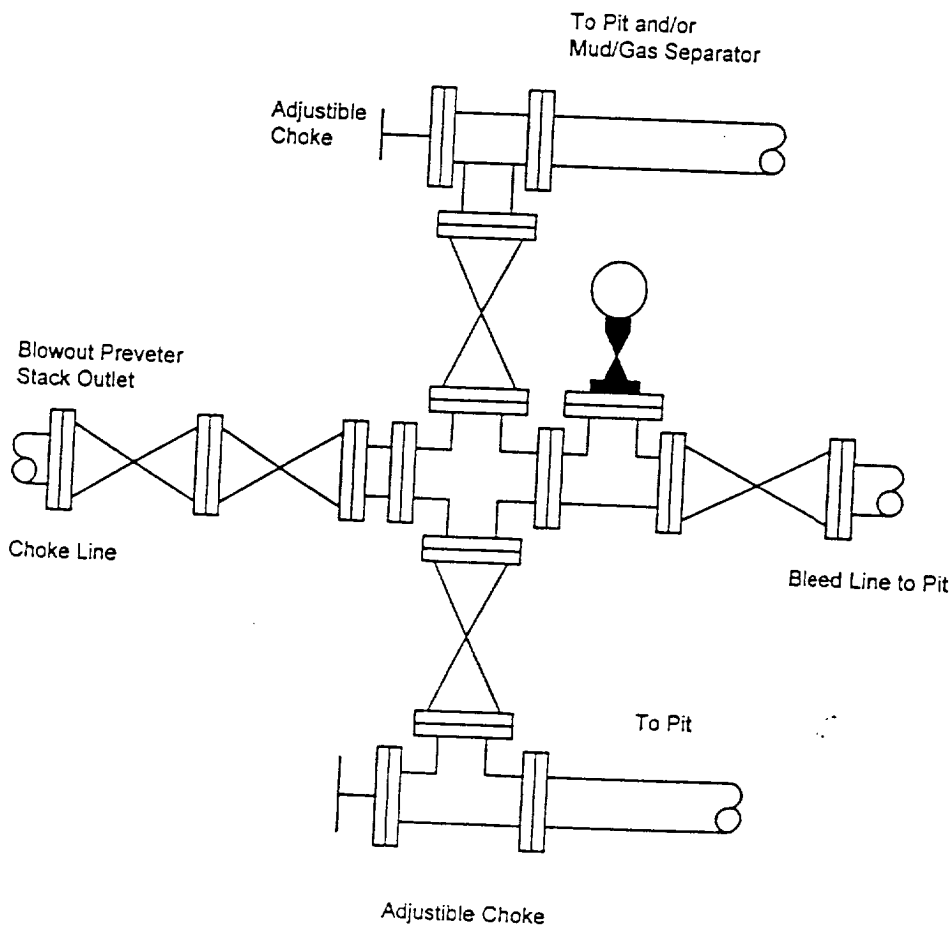
BLOWOUT PREVENTER SYSTEM

5000 PS.



Type 1500 SERIES
5000 psi WP

Choke Manifold Assembly for 5M WP System



**POGO PRODUCING COMPANY**

February 3, 2003

Mr. Brian Arrant
New Mexico Oil Conservation Division
1301 West Grand Avenue
Artesia, New Mexico 88210

VIA FACSIMILE (505) 748-9720
AND REGULAR U.S. MAIL

Re: MCMILLAN PROSPECT
Eddy County, New Mexico
STATE 19 COM No 2 WELL
1,980' FSL & 660' FWL Section 19
T-20-S, R-27-E, N.M.P.M.
Pogo Leases L2312 & L2323

Dear Mr. Arrant

Pursuant to that certain Operating Agreement dated June 20, 1968, by and between Sohio Petroleum Company, Operator, and Lario Oil & Gas Company, et al., Non-Operators, covering All of Section 19, T-20-S, R-27-E, Eddy County, New Mexico, as to the Morrow formation, Pogo Producing Company (successor in interest to various non-operators) proposed the drilling of the captioned well to a depth of 10,700' to test Morrow formation. Atasca Resources, Inc., current Operator under the JOA and the State 19 Com No 1 Well, is deemed non-consent in the drilling of the State 19 Com No 2 Well. Pogo Producing Company ("Pogo") is aware that only one operator is permitted under a proration unit in the State of New Mexico.

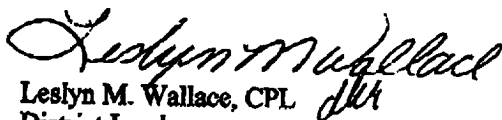
Pursuant to said Operating Agreement, Pogo may drill and complete the State Com No 2 Well and, upon completion of said well, turn over operations to Atasca Resources, Inc., such that Atasca will operate both wells within the 639.80-acre proration unit.

Pogo respectfully requests that the New Mexico Oil Conservation Division approve Pogo's Application for Permit to drill so that Pogo may continue with drilling and completing the well. Again, at the present time, Pogo will not be named as the Operator of said well if it is completed as a producing well.

Thank you for your attention to this matter, and should you have any questions regarding same, you may contact me directly at (915) 685-8127.

Yours very truly,

POGO PRODUCING COMPANY


Leslyn M. Wallace, CPL
District Landman

LMW/dkr

cc: Richard Wright
Joe Janica