

RECEIVED

NEW MEXICO OIL CONSERVATION COMMISSION **APR 29 1960** FORM C-128
 WELL LOCATION AND ACREAGE DEDICATION PLAT
 Revised 5/1/57

SEE INSTRUCTIONS FOR COMPLETING THIS FORM ON THE REVERSE SIDE. **STATE OF NEW MEXICO, OFFICE**

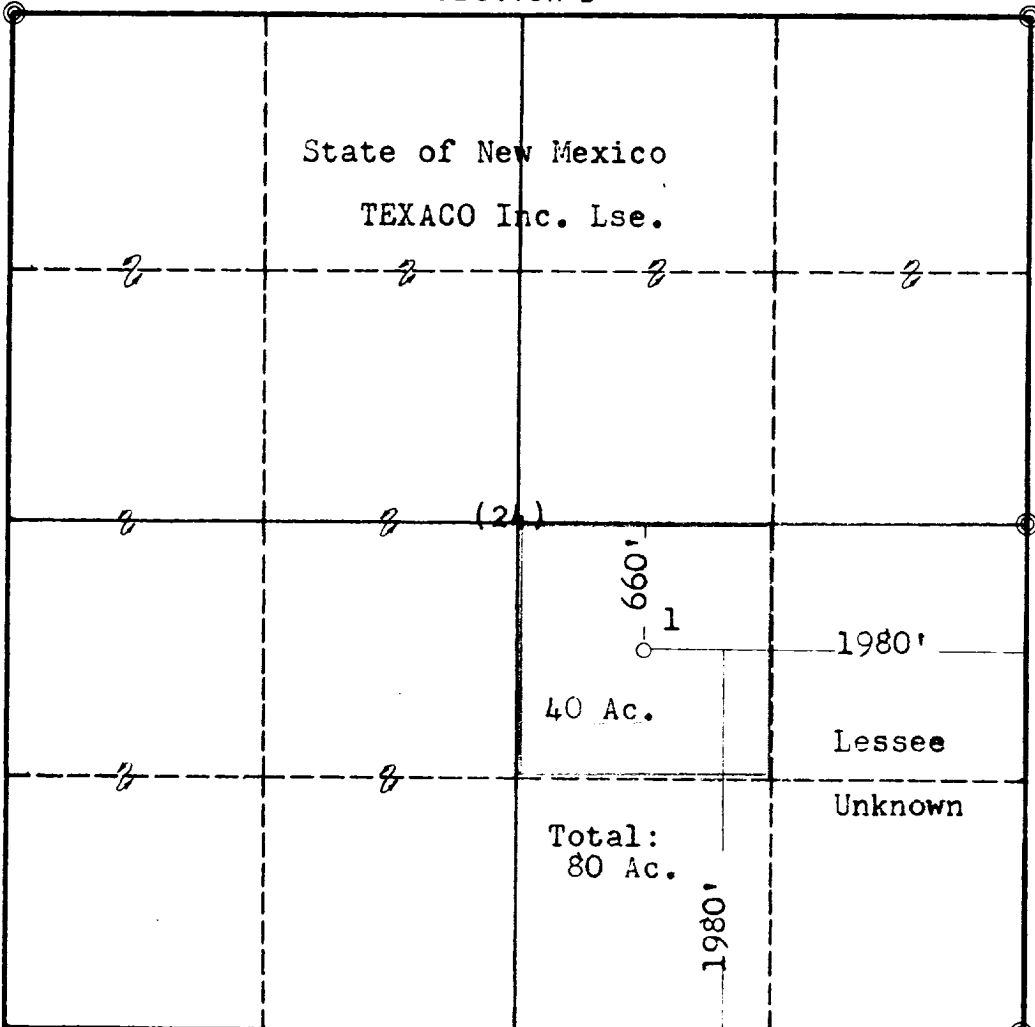
SECTION A

Operator TEXACO Inc.		Lease Remuda Basin Unit		Well No. 1
Unit Letter J	Section 24	Township 23 South	Range 29 East	County Eddy
Actual Footage Location of Well: 1980 feet from the South line and 1980 feet from the East line Sec. 24				
Ground Level Elev. 3028	Producing Formation Devonian	Pool Wildcat	Dedicated Acreage: 40 Acres	

1. Is the Operator the only owner in the dedicated acreage outlined on the plat below? YES X* NO ____ . ("Owner" means the person who has the right to drill into and to produce from any pool and to appropriate the production either for himself or for himself and another. (65-3-29 (e) NMSA 1935 Comp.)
2. If the answer to question one is "no," have the interests of all the owners been consolidated by communitization agreement or otherwise? YES ____ NO ____ . If answer is "yes," Type of Consolidation _____
3. If the answer to question two is "no," list all the owners and their respective interests below:

Owner * Dedicated acreage is within the Remuda Basin Unit	Land Description

SECTION B



CERTIFICATION

I hereby certify that the information in SECTION A above is true and complete to the best of my knowledge and belief.

Name J. J. Velten
Position Division Civil Engineer
Company TEXACO Inc.
Date 4/27/60

Brass Cap

I hereby certify that the well location shown on the plat in SECTION B was plotted from field notes of actual surveys made by me or under my supervision, and that the same is true and correct to the best of my knowledge and belief.

Date Surveyed 4-25-60
Registered Professional Engineer and/or Land Surveyor J. J. Velten
Certificate No. 8174

OIL CONSERVATION COMMISSION		
ARTESIA DISTRICT OFFICE		
No. Copies Required	6	
DISTRIBUTION		
NO. COPIES REQUIRED		
OPERATOR	1	
SA. HALL	1	
PRODUCER OFFICE	1	
STATE OFFICE	1	
U. S. G. O.	2	
TRANSPORTER		
FILE		
BUREAU OF MINES	1	✓