

NEW MEXICO OIL CONSERVATION COMMISSION
Santa Fe, New Mexico

NOTICE OF INTENTION TO DRILL OR RECOMPLETE

Notice must be given to the District Office of the Oil Conservation Commission and approval obtained before drilling or recompletion begins. If changes in the proposed plan are considered advisable, a copy of this notice showing such changes will be returned to the sender. Submit this notice in QUINTUPLICATE. One copy will be returned following approval. See additional instructions in Rules and Regulations of the Commission.

Midland, Texas
(Place)

October 27, 1952.
(Date)

OIL CONSERVATION COMMISSION
SANTA FE, NEW MEXICO

Gentlemen:

You are hereby notified that it is our intention to commence the (Drilling) ~~Recompletion~~ of a well to be known as

Tennessee Production Co.

(Company or Operator)

Valley Land Co.
(Lease)

, Well No. 3, in K The well is

located 1650 feet from the South line and 1650 feet from the West line of Section 7, T. 24S, R. 29E, NMPM.

(GIVE LOCATION FROM SECTION LINE) Malaga Pool, Eddy County

If State Land the Oil and Gas Lease is No.

If patented land the owner is Valley Land Co.

Address Malaga, New Mexico.

We propose to drill well with drilling equipment as follows: Rotary Tools to 2720 ft. Cable tools from 2720 to 2750

The status of plugging bond is in effect

Drilling Contractor Sadler Drlg. Co.--Rotary Cable tool contractor. Undetermined

We intend to complete this well in the Delaware Sand formation at an approximate depth of 2875 feet.

CASING PROGRAM

We propose to use the following strings of Casing and to cement them as indicated:

Size of Hole	Size of Casing	Weight per Foot	New or Second Hand	Depth	Sacks Cement
10 3/4	8 5/8	24#	new	300'	Circ.
7 1/2	5 1/2	15.5#	new	2720	to 10 3/4 shoe
4 3/4	OH			2750	

If changes in the above plans become advisable we will notify you immediately.

ADDITIONAL INFORMATION (If recompletion give full details of proposed plan of work.)

Approved OCT 30 1952, 19.....
Except as follows:

OIL CONSERVATION COMMISSION

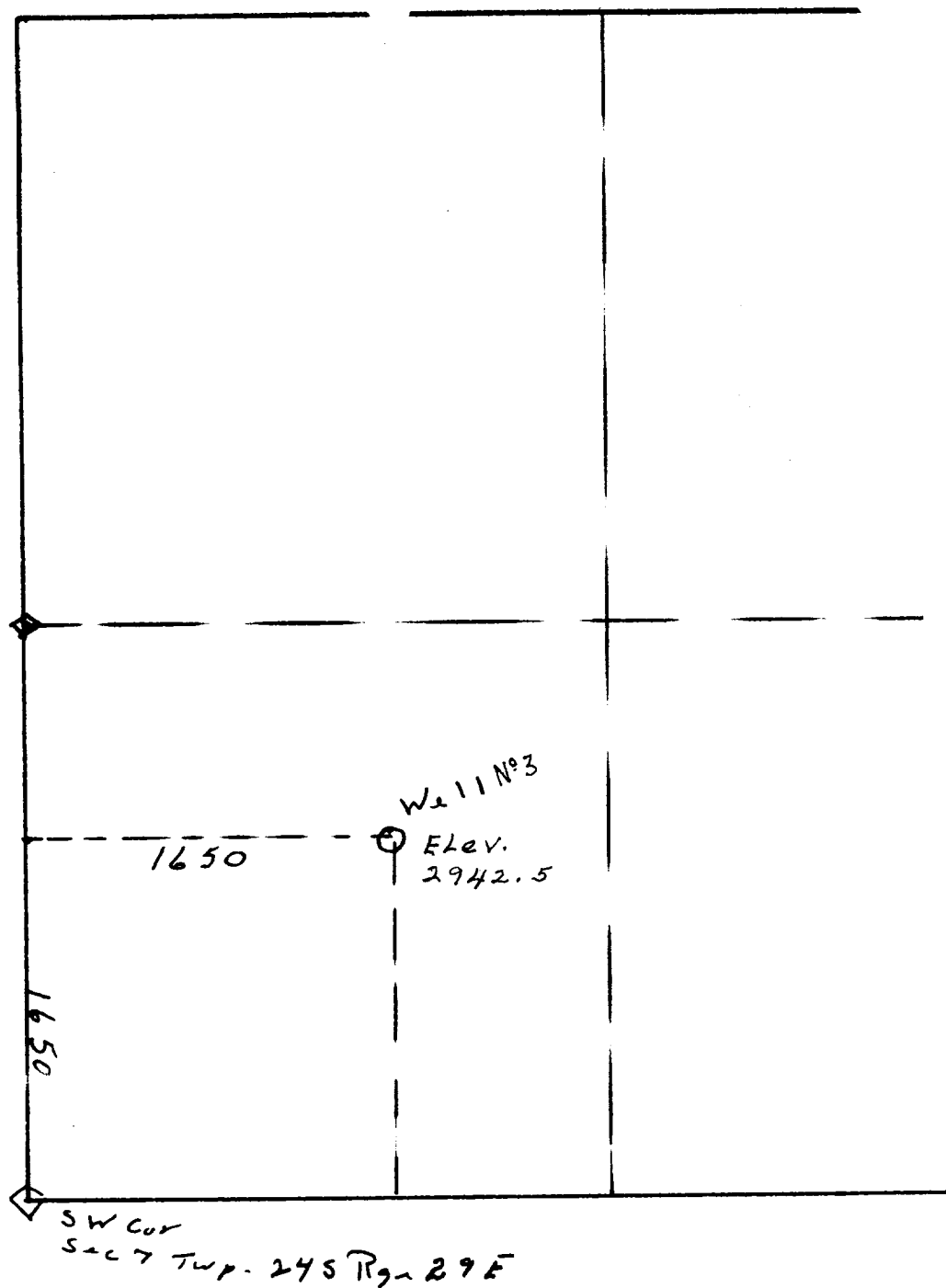
By *L. A. Johnson*
Title OIL AND GAS INSPECTOR

Sincerely yours,

Tennessee Production Co.

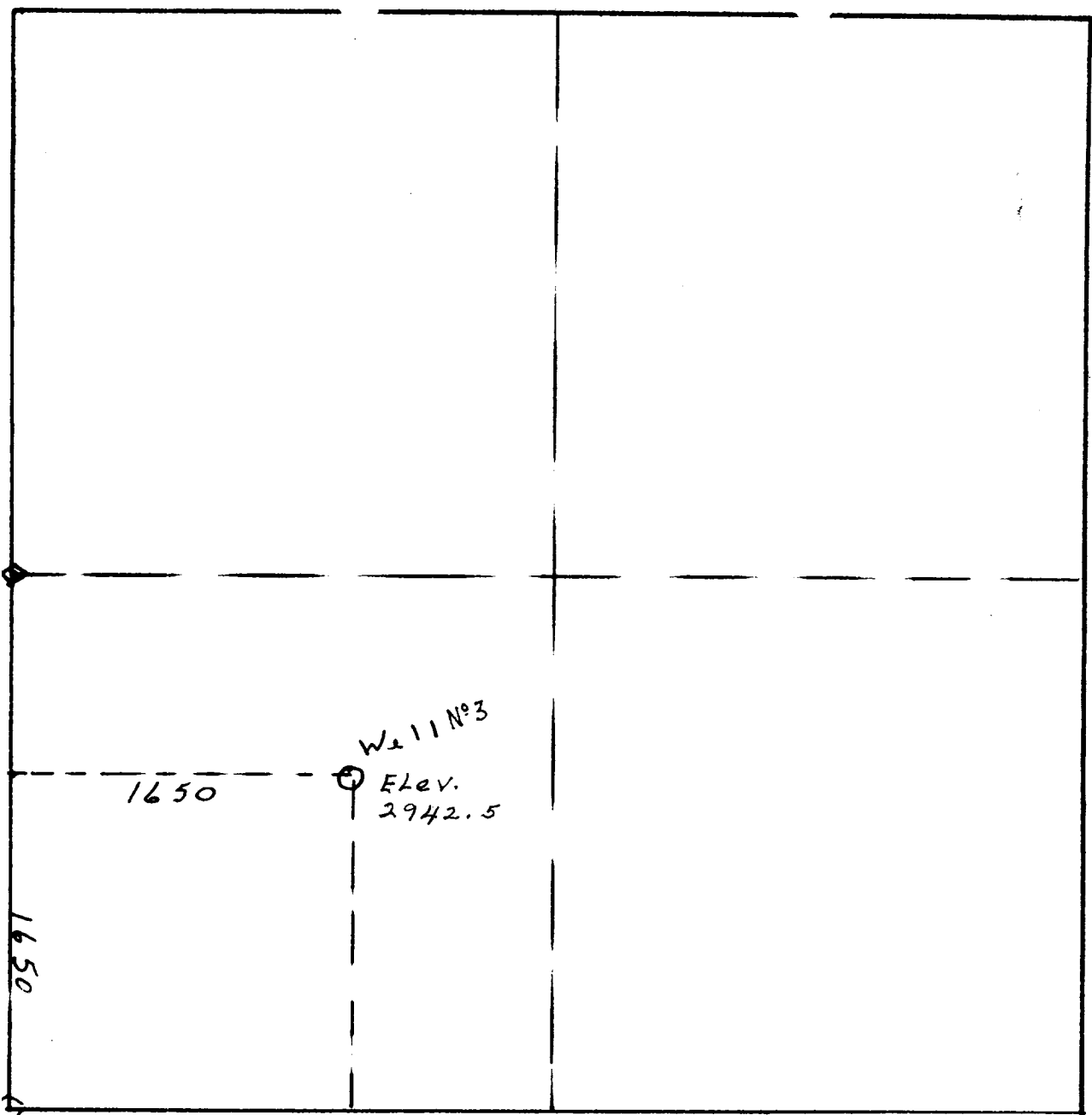
By *O. W. Ward*
Position Dist. Supt.

Name Tennessee Production Co
Address Box 1031
Midland, Texas



CERTIFICATE

This is to certify that I located the well as shown hereon 1650 feet from the west line of section 7, Twp.



SW COR
Sec 7 Twp. 24 S Rge. 29 E

C E R T I F I C A T E

This is to certify that I located the Valley Land #3 well as shown hereon 1650 feet from the south line and 1650 feet from the west line of section 7, Twp. 24 S. Rge. 29 E. N. 1/2 S. 1/2 E. N. 1/2 S. 1/2 E.

John Lewis
John Lewis
Licensed Surveyor of
No. 220