

Submit to Appropriate  
District Office  
State Lease - 4 copies  
Fee Lease - 3 copies

State of New Mexico  
Energy, Minerals and Natural Resources Department

Form C-102  
Revised 1-1-89

OIL CONSERVATION DIVISION

P.O. Box 2088  
Santa Fe, New Mexico 87504-2088

DISTRICT I  
P.O. Box 1980, Hobbs, NM 88240

DISTRICT II  
P.O. Drawer DD, Artesia, NM 88210

DISTRICT III  
1000 Rio Brazos Rd., Aztec, NM 87410

WELL LOCATION AND ACREAGE DEDICATION PLAT

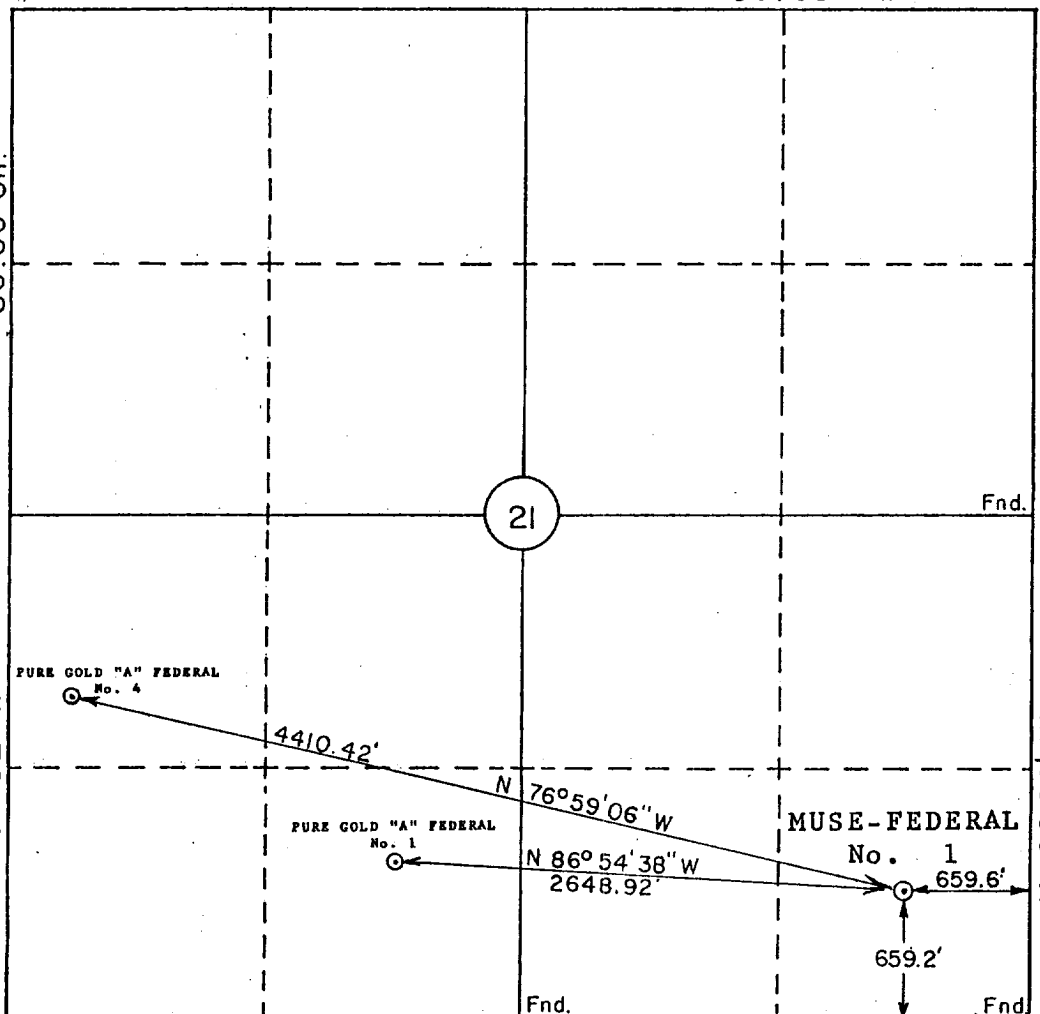
All Distances must be from the outer boundaries of the section

Operator <b>KAISER-FRANCIS OIL CO.</b>		Lease <b>MUSE - FEDERAL</b>		Well No. <b>1</b>
Unit Letter <b>P</b>	Section <b>21</b>	Township <b>23 SOUTH</b>	Range <b>31 EAST</b>	County <b>EDDY</b>
Actual Footage Location of Well: <b>659.2'</b> feet from the <b>SOUTH</b> line and <b>659.6'</b> feet from the <b>EAST</b> line				
Ground level Elev. <b>3368.5'</b>	Producing Formation <b>Delaware</b>	Pool <b>SWD, DELAWARE West Sand Dunes</b>	Dedicated Acreage: <b>40 Acres</b>	
<p>1. Outline the acreage dedicated to the subject well by colored pencil or hatchure marks on the plat below.</p> <p>2. If more than one lease is dedicated to the well, outline each and identify the ownership thereof (both as to working interest and royalty).</p> <p>3. If more than one lease of different ownership is dedicated to the well, have the interest of all owners been consolidated by communitization, unitization, force-pooling, etc.? <input type="checkbox"/> Yes <input type="checkbox"/> No If answer is "yes" type of consolidation _____</p> <p>If answer is "no" list the owners and tract descriptions which have actually been consolidated. (Use reverse side of this form if necessary.) _____</p> <p>No allowable will be assigned to the well until all interests have been consolidated (by communitization, unitization, forced-pooling, or otherwise) or until a non-standard unit, eliminating such interest, has been approved by the Division.</p>				

0 330 660 990 1320 1650 1980 2310 2640 2000 1500 1000 500 0

WEST

80.05 Ch.



OPERATOR CERTIFICATION

I hereby certify that the information contained herein is true and complete to the best of my knowledge and belief.

Signature

*Milton Griffin*

Printed Name

Milton Griffin

Position

Operations Engineer

Company

Kaiser-Francis Oil Co.

Date

May 12, 1994

SURVEYOR CERTIFICATION

I hereby certify that the well location shown on this plat was plotted from field notes of actual surveys made by me or under my supervision, and that the same is true and correct to the best of my knowledge and belief.

2-14-94

Date Surveyed

WILLIAM E. MAHNKE II

Signature & Seal of  
Professional Surveyor

