

NEW MEXICO OIL CONSERVATION COMMISSION
WELL LOCATION AND ACREAGE DEDICATION PLAT

FORM C-128
Revised 3/1/57

SEE INSTRUCTIONS FOR COMPLETING THIS FORM ON THE REVERSE SIDE

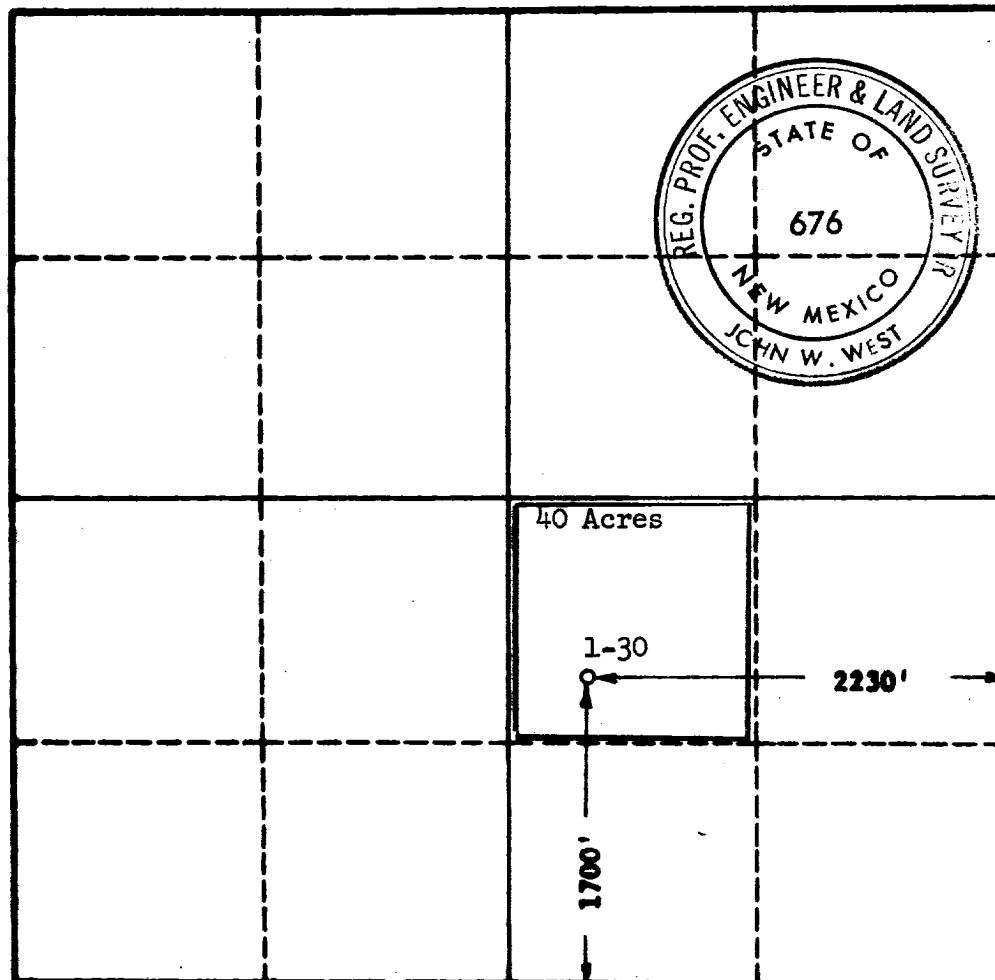
SECTION A

Operator UNION OIL COMPANY OF CALIFORNIA		Lease DARK CANYON UNIT State		Well No. 1-30
Ush Letter J	Section 30	Township 23 SOUTH	Range 25 EAST	County EDDY
Actual Footage Location of Well: 1700 feet from the SOUTH line and 2230 feet from the EAST line				
Ground Level Elev. Unknown at present	Producing Formation Devonian	Pool Wildcat	Dedicated Acreage: 40 Acres	

1. Is the Operator the only owner in the dedicated acreage outlined on the plat below? YES _____ NO X . ("Owner" means the person who has the right to drill into and to produce from any pool and to appropriate the production either for himself or for himself and another. (65-3-29 (c) NMSA 1955 Comp.)
2. If the answer to question one is "no," have the interests of all the owners been consolidated by communitization agreement or otherwise? YES X NO ____ . If answer is "yes," Type of Consolidation Joint Operating Agreement
3. If the answer to question two is "no," list all the owners and their respective interests below:

Owner	Land Description

SECTION B



CERTIFICATION

I hereby certify that the information in SECTION A above is true and complete to the best of my knowledge and belief.

Name
Paul Wecker

Position
Production Clerk

Company
Union Oil Co. of California

Date
August 22, 1963

I hereby certify that the well location shown on the plat in SECTION B was plotted from field notes of actual surveys made by me or under my supervision, and that the same is true and correct to the best of my knowledge and belief.

Date Surveyed
8-20-1963

Registered Professional Engineer and/or Land Surveyor, **JOHN W. WEST**

Certificate No.
N. M. - P. E. & L. S. NO. 676

OIL CONSERVATION COMMISSION
ALBERTA DISTRICT OFFICE

No. 6

DESCRIPTION

	RECEIVED	
OPERATOR	1	
SANTA FE	1	
PRODUCER		
STATE LAND OFFICE	1	
U. S. G. S	2	
TRANSPORTER		
FILE	1	
BUREAU OF MINES		