

Operator Phillips Petroleum Company		Lease James "A" COM		Well No. 1
Unit Letter 0	Section 2	Township 22-S	Range 30-E	County Eddy
Actual Footage Location of Well: 2006 feet from the east line and 665 feet from the south line				
Ground Level Elev. 3191' DF	Producing Formation Strawn	Pool Cabin Lake-Strawn	Dedicated Acreage: 40 Acres	

1. Outline the acreage dedicated to the subject well by colored pencil or hachure marks on the plat below.
2. If more than one lease is dedicated to the well, outline each and identify the ownership thereof (both as to working interest and royalty).
3. If more than one lease of different ownership is dedicated to the well, have the interests of all owners been consolidated by communitization, unitization, force-pooling, etc?

RECEIVED

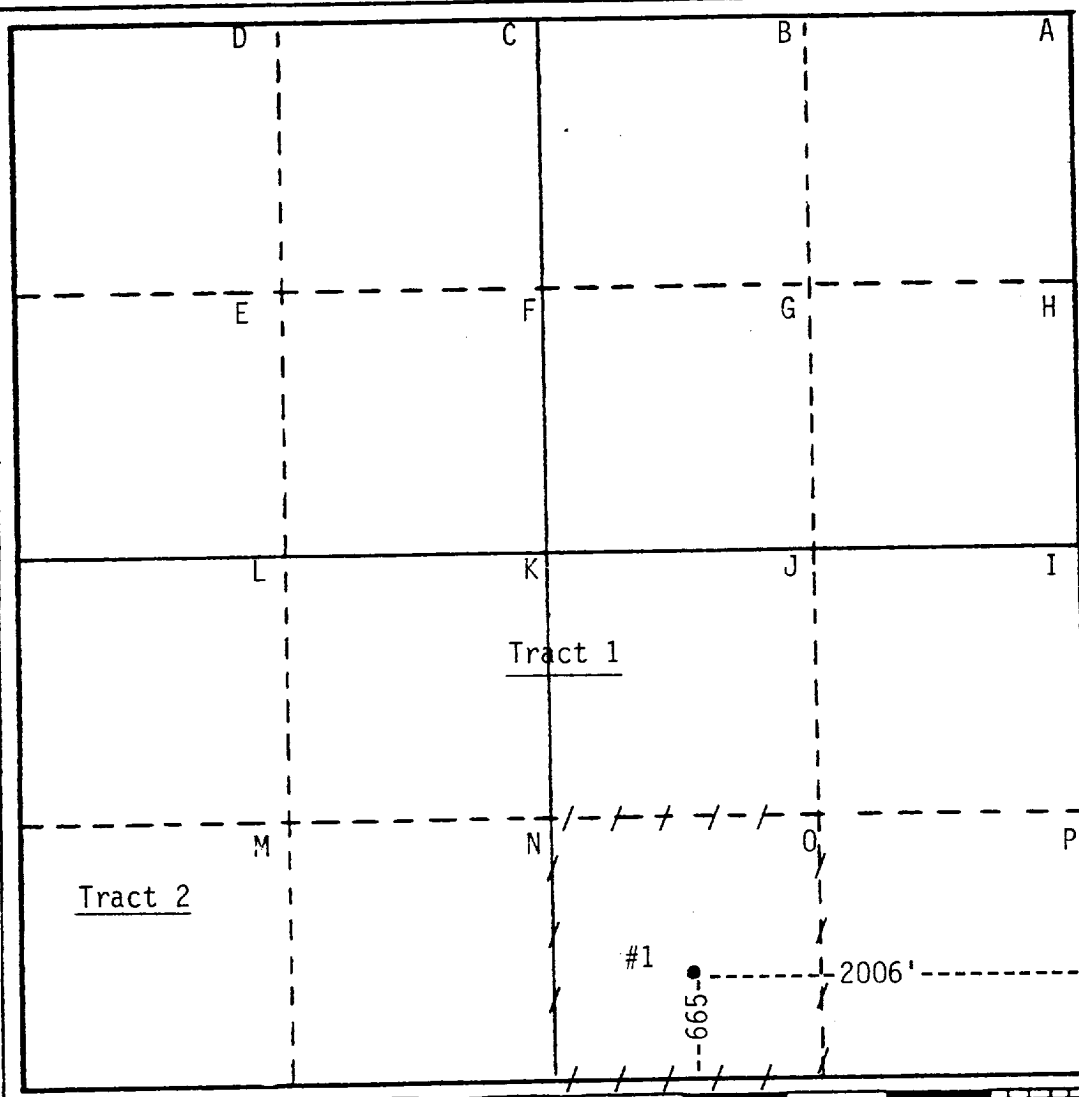
AUG 01 '88

O. C. D.
ARTESIA OFFICE

☒ Yes ☐ No If answer is "yes," type of consolidation communitization

If answer is "no," list the owners and tract descriptions which have actually been consolidated. (Use reverse side of this form if necessary.)

No allowable will be assigned to the well until all interests have been consolidated (by communitization, unitization, forced-pooling, or otherwise) or until a non-standard unit, eliminating such interests, has been approved by the Commission.



CERTIFICATION

I hereby certify that the information contained herein is true and complete to the best of my knowledge and belief.

W. J. Mueller

Name for
W. J. Mueller

Position
Engineering Supervisor, Resv

Company
Phillips Petroleum Company

Date
July 29, 1988

I hereby certify that the well location shown on this plat was plotted from field notes of actual surveys made by me or under my supervision, and that the same is true and correct to the best of my knowledge and belief.

Date Surveyed
4-25-66

Registered Professional Engineer and/or Land Surveyor

M. E. Spry

Certificate No.

679

0 320 640 960 1280 1600 1920 2240 2560 2880 3200 3520 3840 4160 4480 4800 5120 5440 5760 6080 6400